

Product Datasheet

Apolipoprotein E/ApoE Antibody - BSA Free NBP1-31123

Unit Size: 0.1 mg

Store at 4C short term. Aliquot and store at -20C long term. Avoid freeze-thaw cycles.

www.novusbio.com



technical@novusbio.com

Publications: 4

Protocols, Publications, Related Products, Reviews, Research Tools and Images at:
www.novusbio.com/NBP1-31123

Updated 1/11/2026 v.20.1

Earn rewards for product
reviews and publications.

Submit a publication at www.novusbio.com/publications

Submit a review at www.novusbio.com/reviews/destination/NBP1-31123



NBP1-31123

Apolipoprotein E/ApoE Antibody - BSA Free

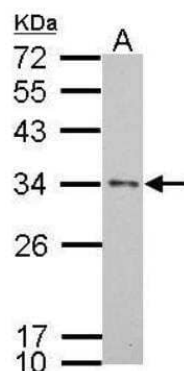
Product Information	
Unit Size	0.1 mg
Concentration	1.0 mg/ml
Storage	Store at 4C short term. Aliquot and store at -20C long term. Avoid freeze-thaw cycles.
Clonality	Polyclonal
Preservative	0.02% Sodium Azide
Isotype	IgG
Purity	Immunogen affinity purified
Buffer	PBS
Target Molecular Weight	36 kDa

Product Description	
Description	Novus Biologicals Rabbit Apolipoprotein E/ApoE Antibody - BSA Free (NBP1-31123) is a polyclonal antibody validated for use in IHC, WB, ELISA, ICC/IF, Simple Western and IP. Anti-Apolipoprotein E/ApoE Antibody: Cited in 3 publications. All Novus Biologicals antibodies are covered by our 100% guarantee.
Host	Rabbit
Gene ID	348
Gene Symbol	APOE
Species	Human
Immunogen	Partial recombinant protein expressed in E. coli made to a C-terminus region of human Apolipoprotein E. The exact sequence is proprietary.

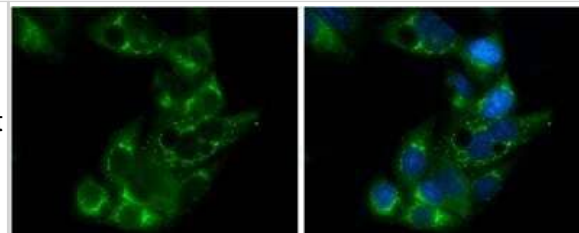
Product Application Details	
Applications	Western Blot, Simple Western, Immunohistochemistry-Paraffin, ELISA, Immunocytochemistry/ Immunofluorescence, Immunohistochemistry, Immunoprecipitation
Recommended Dilutions	Western Blot 1:500-1:20000, Simple Western 1:50, ELISA 1:1000-1:10000, Immunohistochemistry 1:100-1:1000, Immunocytochemistry/ Immunofluorescence 1:100-1:1000, Immunoprecipitation 1:100-1:500, Immunohistochemistry-Paraffin 1:100-1:1000

Images

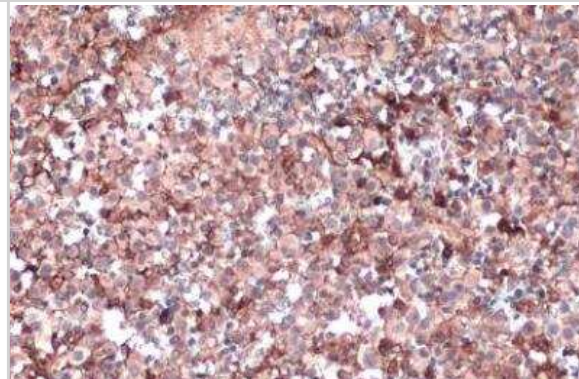
Western Blot: Apolipoprotein E/ApoE Antibody [NBP1-31123] - A. 30 ug HepG2 whole cell lysate/extract 12% SDS-PAGE Apolipoprotein E antibody [C2C3], C-term dilution: 1:1000 The HRP-conjugated anti-rabbit IgG antibody was used to detect the primary antibody.



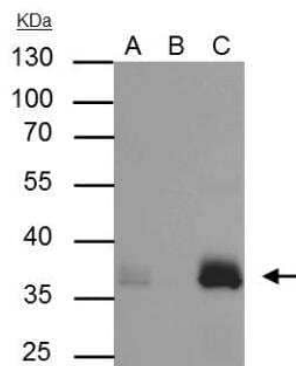
Immunocytochemistry/Immunofluorescence: Apolipoprotein E/ApoE Antibody [NBP1-31123] - HepG2 cells were fixed in 4% paraformaldehyde at RT for 15 min. Green: Apolipoprotein E stained by Apolipoprotein E antibody [C2C3], C-term diluted at 1:500. Blue: Hoechst 33342 staining



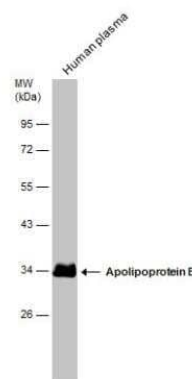
Immunohistochemistry-Paraffin: Apolipoprotein E/ApoE Antibody [NBP1-31123] - Apolipoprotein E antibody [C2C3], C-term detects secreted Apolipoprotein E protein by immunohistochemical analysis. Sample: Paraffin-embedded human ovarian cancer. Apolipoprotein E stained by Apolipoprotein E antibody [C2C3], C-term (NBP1-31123). Antigen Retrieval: Citrate buffer, pH 6.0, 15 min



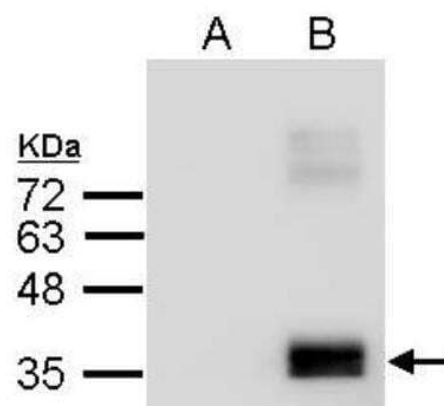
Western Blot: Apolipoprotein E/ApoE Antibody [NBP1-31123] - HepG2 whole cell lysate/extract A : 30 ug whole cell lysate/extract of Apolipoprotein E protein expressing HepG2 cells B : Control with 3ug of pre-immune rabbit IgG C : Immunoprecipitation of Apolipoprotein E by 3 ug of Apolipoprotein E antibody [C2C3], C-term 10% SDS-PAGE The immunoprecipitated Apolipoprotein E protein was detected by Apolipoprotein E antibody [C2C3], C-term diluted at 1 : 1000. Easy Blot anti-rabbit IgG (HRP) was used as a secondary reagent.



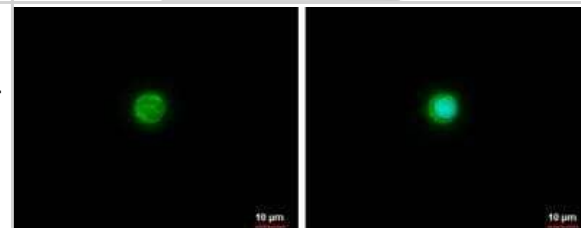
Western Blot: Apolipoprotein E/ApoE Antibody [NBP1-31123] - Human tissue extract (30 ug) was separated by 10% SDS-PAGE, and the membrane was blotted with Apolipoprotein E antibody [C2C3], C-term diluted at 1:5000.



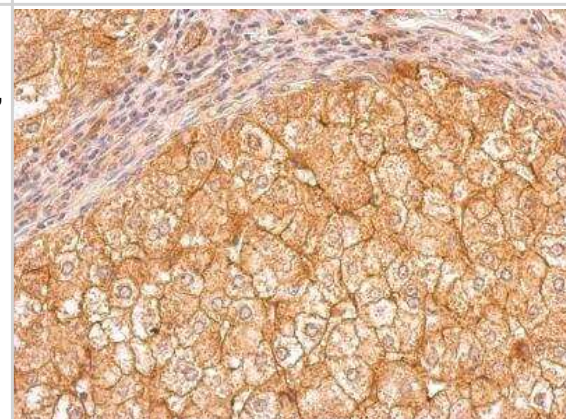
Western Blot: Apolipoprotein E/ApoE Antibody [NBP1-31123] - Sample (2.5 ug of whole cell lysate) A: Conditional medium from human primary preadipocyte B: Conditional medium from differentiated human primary preadipocyte 12% SDS PAGE, antibody diluted at 1:2000.



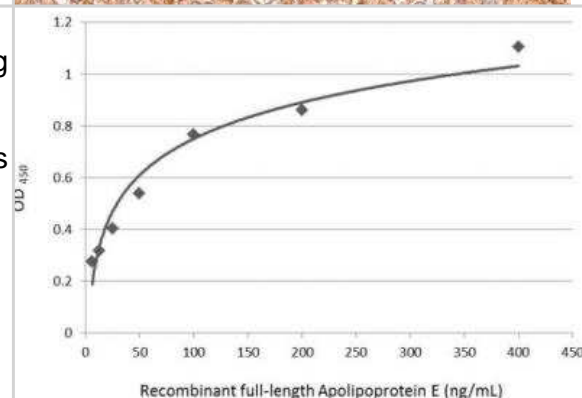
Immunocytochemistry/Immunofluorescence: Apolipoprotein E/ApoE Antibody [NBP1-31123] - Apolipoprotein E antibody [C2C3], C-term detects Apolipoprotein E protein at cytoplasm by analysis. Sample: THP-1 cells were fixed in ice-cold MeOH for 5 min. Green: Apolipoprotein E protein stained by Apolipoprotein E antibody [C2C3], C-term diluted at 1:500. Blue: Hoechst 33342 staining.



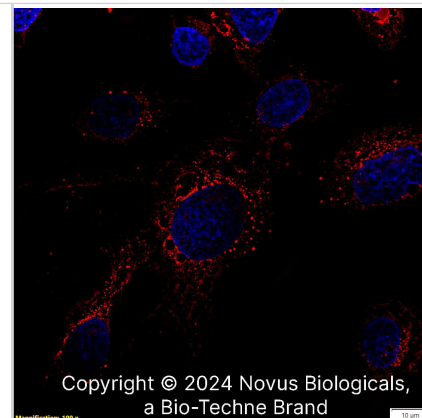
Immunohistochemistry-Paraffin: Apolipoprotein E/ApoE Antibody [NBP1-31123] - Human hepatoma. Apolipoprotein E antibody [C2C3], C-term dilution: 1:500. Antigen Retrieval: Trilogy™ (EDTA based, pH 8.0) buffer, 15min



ELISA: Apolipoprotein E/ApoE Antibody [NBP1-31123] - Sandwich ELISA detection of recombinant full-length Apolipoprotein E protein using as capture antibody at concentration of 5 ug/mL and a mouse monoclonal anti-Apolipoprotein E antibody as detection antibody at concentration of 1 ug/mL. Mouse IgG antibody (HRP) (NBP2-19382) was diluted at 1:10000 and used to detect the primary antibody.



Apolipoprotein E/ApoE was detected in immersion fixed HepG2 human hepatocellular carcinoma cell line using Rabbit anti-Apolipoprotein E/ApoE Affinity Purified Polyclonal Antibody conjugated to Biotin (Catalog # NBP1-31123B) at 5 µg/mL overnight at 4C. Cells were stained using Streptavidin conjugated to DyLight 550 (red) and counterstained with DAPI (blue). Cells were imaged using a 100X objective and digitally deconvolved.



Publications

Carrell EM, Chen YH, Ranum PT et al. VWA3A-derived ependyma promoter drives increased therapeutic protein secretion into the CSF Molecular Therapy - Nucleic Acids 2023-09-12 [PMID: 37547292] (Western Blot, Block/Neutralize)

Jackson RJ, Meltzer JC, Nguyen H et al. APOE4 derived from astrocytes leads to blood-brain barrier impairment Brain 2022-10-21 [PMID: 34957486] (Western Blot, Block/Neutralize)

Rosemary J Jackson, Megan S Keiser, Jonah C Meltzer, Dustin P Fykstra, Steven E Dierksmeier, Soroush Hajizadeh, Johannes Kreuzer, Robert Morris, Alexandra Melloni, Tsuneo Nakajima, Luis Tecedor, Paul T Ranum, Ellie Carrell, YongHong Chen, Maryam A Nishtar, David M Holtzman, Wilhelm Haas, Beverly L Davidson, Bradley T Hyman APOE2 gene therapy reduces amyloid deposition and improves markers of neuroinflammation and neurodegeneration in a mouse model of Alzheimer disease. Molecular therapy : the journal of the American Society of Gene Therapy 2024-03-19 [PMID: 38504517]

Cunningham M Establishing the Freestyle 293 Expression System as a Tool to Generate Recombinant Apolipoprotein E in Mammalian Cells Thesis 2022-01-01 (WB, Human, Rat)

Details:

Dilution used for WB 1:5000

Procedures

Immunohistochemistry-Paraffin Protocol for Apolipoprotein E/ApoE Antibody (NBP1-31123)

Immunohistochemistry-Paraffin Embedded Sections

Antigen Unmasking:

Bring slides to a boil in 10 mM sodium citrate buffer (pH 6.0) then maintain at a sub-boiling temperature for 10 minutes. Cool slides on bench-top for 30 minutes (keep slides in the sodium citrate buffer at all times).

Staining:

1. Wash sections in deionized water three times for 5 minutes each.
2. Wash sections in PBS for 5 minutes.
3. Block each section with 100-400 ul blocking solution (1% BSA in PBS) for 1 hour at room temperature.
4. Remove blocking solution and add 100-400 ul diluted primary antibody. Incubate overnight at 4 C.
5. Remove antibody solution and wash sections in wash buffer three times for 5 minutes each.
6. Add 100-400 ul HRP polymer conjugated secondary antibody. Incubate 30 minutes at room temperature.
7. Wash sections three times in wash buffer for 5 minutes each.
8. Add 100-400 ul DAB substrate to each section and monitor staining closely.
9. As soon as the sections develop, immerse slides in deionized water.
10. Counterstain sections in hematoxylin.
11. Wash sections in deionized water two times for 5 minutes each.
12. Dehydrate sections.
13. Mount coverslips.

Immunocytochemistry/Immunofluorescence Protocol for Apolipoprotein E/ApoE Antibody (NBP1-31123)

Immunocytochemistry Protocol

Culture cells to appropriate density in 35 mm culture dishes or 6-well plates.

1. Remove culture medium and wash the cells briefly in PBS. Add 10% formalin to the dish and fix at room temperature for 10 minutes.
2. Remove the formalin and wash the cells in PBS.
3. Permeabilize the cells with 0.1% Triton X100 or other suitable detergent for 10 min.
4. Remove the permeabilization buffer and wash three times for 10 minutes each in PBS. Be sure to not let the specimen dry out.
5. To block nonspecific antibody binding, incubate in 10% normal goat serum from 1 hour to overnight at room temperature.
6. Add primary antibody at appropriate dilution and incubate overnight at 4C.
7. Remove primary antibody and replace with PBS. Wash three times for 10 minutes each.
8. Add secondary antibody at appropriate dilution. Incubate for 1 hour at room temperature.
9. Remove secondary antibody and replace with PBS. Wash three times for 10 minutes each.
10. Counter stain DNA with DAPI if required.



Western Blot Protocol for Apolipoprotein E/ApoE Antibody (NBP1-31123)

Western Blot Protocol

1. Perform SDS-PAGE on samples to be analyzed, loading 10-25 ug of total protein per lane.
2. Transfer proteins to PVDF membrane according to the instructions provided by the manufacturer of the membrane and transfer apparatus.
3. Stain the membrane with Ponceau S (or similar product) to assess transfer success, and mark molecular weight standards where appropriate.
4. Rinse the blot TBS -0.05% Tween 20 (TBST).
5. Block the membrane in 5% Non-fat milk in TBST (blocking buffer) for at least 1 hour.
6. Wash the membrane in TBST three times for 10 minutes each.
7. Dilute primary antibody in blocking buffer and incubate overnight at 4C with gentle rocking.
8. Wash the membrane in TBST three times for 10 minutes each.
9. Incubate the membrane in diluted HRP conjugated secondary antibody in blocking buffer (as per manufacturer's instructions) for 1 hour at room temperature.
10. Wash the blot in TBST three times for 10 minutes each (this step can be repeated as required to reduce background).
11. Apply the detection reagent of choice in accordance with the manufacturer's instructions.





Novus Biologicals USA

10730 E. Briarwood Avenue
Centennial, CO 80112
USA
Phone: 303.730.1950
Toll Free: 1.888.506.6887
Fax: 303.730.1966
nb-customerservice@bio-techne.com

Bio-Techne Canada

21 Canmotor Ave
Toronto, ON M8Z 4E6
Canada
Phone: 905.827.6400
Toll Free: 855.668.8722
Fax: 905.827.6402
canada.inquires@bio-techne.com

Bio-Techne Ltd

19 Barton Lane
Abingdon Science Park
Abingdon, OX14 3NB, United Kingdom
Phone: (44) (0) 1235 529449
Free Phone: 0800 37 34 15
Fax: (44) (0) 1235 533420
info.EMEA@bio-techne.com

General Contact Information

www.novusbio.com
Technical Support: nb-technical@bio-techne.com
Orders: nb-customerservice@bio-techne.com
General: novus@novusbio.com

Products Related to NBP1-31123

NBP2-33376H	Blue Marker Antibody (6F4-F6) [HRP]
HAF008	Goat anti-Rabbit IgG Secondary Antibody [HRP]
NB7160	Goat anti-Rabbit IgG (H+L) Secondary Antibody [HRP]
NBP2-24891	Rabbit IgG Isotype Control

Limitations

This product is for research use only and is not approved for use in humans or in clinical diagnosis. Primary Antibodies are guaranteed for 1 year from date of receipt.

For more information on our 100% guarantee, please visit www.novusbio.com/guarantee

Earn gift cards/discounts by submitting a review: www.novusbio.com/reviews/submit/NBP1-31123

Earn gift cards/discounts by submitting a publication using this product:
www.novusbio.com/publications

