

# Product Datasheet

## Activin A Antibody - BSA Free NBP1-30928

Unit Size: 100 ul

Store at 4C short term. Aliquot and store at -20C long term. Avoid freeze-thaw cycles.

[www.novusbio.com](http://www.novusbio.com)



[technical@novusbio.com](mailto:technical@novusbio.com)

### Publications: 6

Protocols, Publications, Related Products, Reviews, Research Tools and Images at:  
[www.novusbio.com/NBP1-30928](http://www.novusbio.com/NBP1-30928)

Updated 9/25/2025 v.20.1

Earn rewards for product  
reviews and publications.

Submit a publication at [www.novusbio.com/publications](http://www.novusbio.com/publications)

Submit a review at [www.novusbio.com/reviews/destination/NBP1-30928](http://www.novusbio.com/reviews/destination/NBP1-30928)



**NBP1-30928**

Activin A Antibody - BSA Free

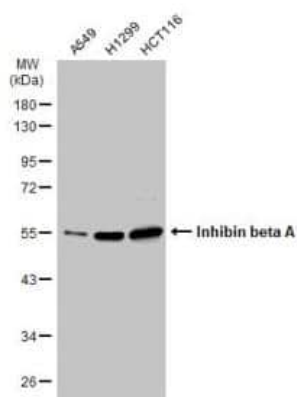
Product Information	
Unit Size	100 ul
Concentration	Concentrations vary lot to lot. See vial label for concentration. If unlisted please contact technical services.
Storage	Store at 4C short term. Aliquot and store at -20C long term. Avoid freeze-thaw cycles.
Clonality	Polyclonal
Preservative	0.025% Proclin 300
Isotype	IgG
Purity	Antigen Affinity-purified
Buffer	PBS, 20% Glycerol
Target Molecular Weight	47 kDa

Product Description	
Description	Novus Biologicals Rabbit Activin A Antibody - BSA Free (NBP1-30928) is a polyclonal antibody validated for use in IHC, WB and ICC/IF. Anti-Activin A Antibody: Cited in 6 publications. All Novus Biologicals antibodies are covered by our 100% guarantee.
Host	Rabbit
Gene ID	3624
Gene Symbol	INHBA
Species	Human
Immunogen	Carrier-protein conjugated synthetic peptide encompassing a sequence within the C-terminus region of human Activin A. The exact sequence is proprietary.

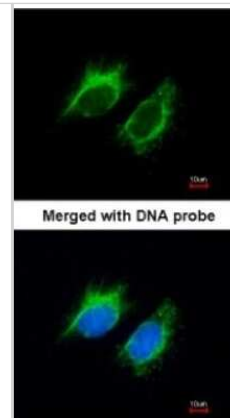
Product Application Details	
Applications	Western Blot, Immunohistochemistry-Paraffin, Immunocytochemistry/ Immunofluorescence, Immunohistochemistry
Recommended Dilutions	Western Blot 1:500-1:3000, Immunohistochemistry 1:100-1:1000, Immunocytochemistry/ Immunofluorescence 1:100-1:1000, Immunohistochemistry-Paraffin 1:100-1:1000

**Images**

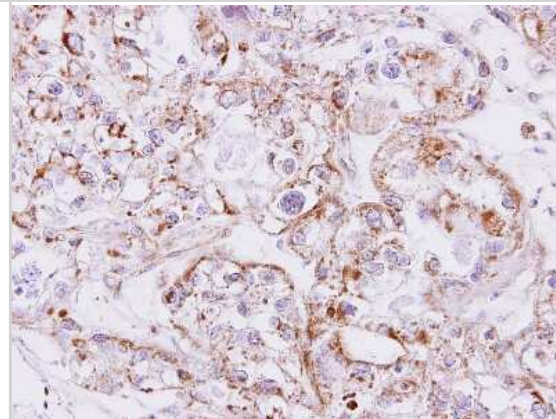
Western Blot: Activin A Antibody [NBP1-30928] - Various whole cell extracts (30 ug) were separated by 10% SDS-PAGE, and the membrane was blotted with Inhibin beta A antibody diluted at 1:1000. The HRP-conjugated anti-rabbit IgG antibody (NBP2-19301) was used to detect the primary antibody.



Immunocytochemistry/Immunofluorescence: Activin A Antibody [NBP1-30928] - Paraformaldehyde-fixed HeLa, using antibody at 1:200 dilution.



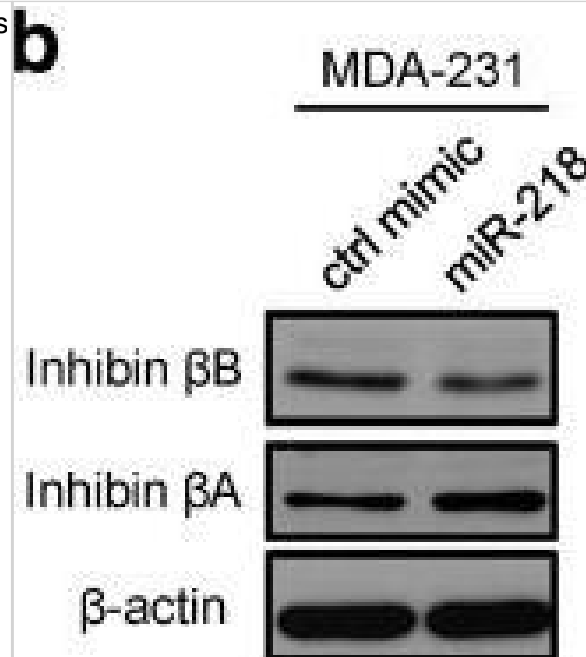
Immunohistochemistry-Paraffin: Activin A Antibody [NBP1-30928] - CLEAR CELL OVCA xenograft, using Inhibin beta A antibody at 1:500 dilution. Antigen Retrieval: Trilogy™ (EDTA based, pH 8.0) buffer, 15min



Western Blot: Activin A Antibody [NBP1-30928] - Western blot analyses of YY1 and inhibin betaA in MDA-231 cells co-transfected with miR-218 mimic and YY1-overexpressing plasmid, or the corresponding controls at 72 h. Image collected and cropped by CiteAb from the following publication ([breast-cancer-research.biomedcentral.com/articles/10.1186/s13058-018-1059-y](https://breast-cancer-research.biomedcentral.com/articles/10.1186/s13058-018-1059-y)), licensed under a CC-BY license.



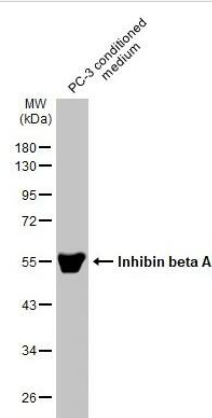
Western Blot: Activin A Antibody [NBP1-30928] - miR-218 directly targets INHBB & YY1, & increases INHBA expression. a Relative RNA level of INHBB & INHBA normalized to 18S in MDA-231 transfected with miR-218 or control miRNA mimic at 24 h & 72 h, respectively. \*\*\*P < 0.001. b Western blot analyses of inhibin  $\beta$ B & inhibin  $\beta$ A in mimic-transfected MDA-231 cells at 48 h. c Relative RNA level of INHBB & INHBA normalized to 18S in MDA-231-bone transfected with anti-miR-218 or control antagomiR at 24 h & 48 h, respectively.. \*\*P < 0.01; \*\*\*P < 0.001. d Sequence alignment of miR-218 & its predicted targets INHBB & YY1. e psiCheck2 reporter plasmids & miR-218 mimic or its corresponding control were transfected into indicated cell lines. Renilla & firefly luciferase activity was measured at 48 h. \*P < 0.05; n.s. not significant. f Relative RNA level of YY1 normalized to 18S in mimic-transfected MDA-231 cells at 24 h. \*\*\*P < 0.001. g Western blot analyses of YY1 & inhibin  $\beta$ A in MDA-231 cells co-transfected with miR-218 mimic & YY1-overexpressing plasmid, or the corresponding controls at 72 h. h psiCheck2 reporter plasmids & miR-218 mimic or its corresponding control vector were transfected into MDA-231 cells. Renilla & firefly luciferase activity was measured at 48 h. \*\*P < 0.01; n.s. not significant Image collected & cropped by CiteAb from the following publication (<https://pubmed.ncbi.nlm.nih.gov/30348200>), licensed under a CC-BY license. Not internally tested by Novus Biologicals.



Western Blot: Activin A Antibody [NBP1-30928] - miR-218-regulated inhibin  $\beta$ A affects SMAD2/3 signaling in a cell-dependent manner. a & b Western blot analyses of phospho-SMAD2/3 in MDA-231 (a) or MC3T3 (b) that was serum-starved overnight & treated with EV-depleted CM collected from indicated cells for 30 min or 2 h. CM producing cell lines were transfected, PBS washed 48 h after transfection & then incubated with serum-free medium overnight before CM collection & EV depletion by ultracentrifugation. c Western blot analyses of inhibin  $\beta$ A, inhibin  $\beta$ B, & inhibin  $\alpha$  in CM from indicated cell lines that was concentrated with medium concentrator columns. Arrows indicate the position of antigen. Control mimic-transfected MDA-231 whole cell lysate (WCL) was used as positive control for inhibin  $\beta$ A & inhibin  $\beta$ B. d Western blot analyses of inhibin  $\beta$ A monomer or dimer (activin A) in CM from indicated cell lines under non-reducing condition & without boiling the samples. Bottom & top arrows indicate inhibin  $\beta$ A monomer & dimer, respectively. e Western blot analyses of inhibin  $\alpha$  in MC3T3 CM concentrated from 20 ml CM. WCL of MCF10A was used as a positive control. f & g Western blot analyses of phospho-SMAD2/3 in MDA-231 (f) or MC3T3 (g) that was serum-starved overnight & treated with CM collected from indicated cells for 30 min or 2 h. For MDA-231 cells (f), recombinant inhibin  $\alpha$  protein was added to CM as indicated. For MC3T3 cells (g), anti-inhibin  $\alpha$  antibody was added to CM as indicated Image collected & cropped by CiteAb from the following publication (<https://pubmed.ncbi.nlm.nih.gov/30348200>), licensed under a CC-BY license. Not internally tested by Novus Biologicals.



Western Blot: Activin A Antibody [NBP1-30928] - PC-3 conditioned medium (30 µg) was separated by 10% SDS-PAGE, and the membrane was blotted with Inhibin beta A antibody diluted at 1:1000. The HRP-conjugated anti-rabbit IgG antibody (NBP2-19301) was used to detect the primary antibody.



## Publications

Su X, Ying J, Xiao D et al. Activin A rescues preterm brain injury through a novel Noggin/BMP4/Id2 signaling pathway International Journal of Molecular Medicine 2022-12-14 [PMID: 36524372] (Western Blot, Human)

Baik SH, Selvaraji S, Fann DY et al. Hippocampal transcriptome profiling reveals common disease pathways in chronic hypoperfusion and aging Aging (Albany NY) 2021-06-15 [PMID: 34074801] (Western Blot, Human)

Depina P, ?ori? M, Kova?i? Perica M, Ani?i? MN et Al. Expression of activin A in liver tissue and the outcome of patients with biliary atresia Front Pediatr 2024-12-02 [PMID: 39618695]

Tsai MT, Ou SM, Lee KH et al. Circulating Activin A, Kidney Fibrosis, and Adverse Events Clinical journal of the American Society of Nephrology : CJASN 2023-11-20 [PMID: 37983094]

EIGhazaly M, Collins MO, Ibler AEM, Humphreys D Typhoid toxin hijacks Wnt5a to establish host senescence and Salmonella infection Cell reports 2023-10-31 [PMID: 37792529] (WB, ICC/IF, Human)

Liu X, Cao M, Palomares M et al. Metastatic breast cancer cells overexpress and secrete miR-218 to regulate type I collagen deposition by osteoblasts. Breast Cancer Res. 2018-10-22 [PMID: 30348200] (WB, Human)



### **Novus Biologicals USA**

10730 E. Briarwood Avenue  
Centennial, CO 80112  
USA  
Phone: 303.730.1950  
Toll Free: 1.888.506.6887  
Fax: 303.730.1966  
nb-customerservice@bio-techne.com

### **Bio-Techne Canada**

21 Canmotor Ave  
Toronto, ON M8Z 4E6  
Canada  
Phone: 905.827.6400  
Toll Free: 855.668.8722  
Fax: 905.827.6402  
canada.inquires@bio-techne.com

### **Bio-Techne Ltd**

19 Barton Lane  
Abingdon Science Park  
Abingdon, OX14 3NB, United Kingdom  
Phone: (44) (0) 1235 529449  
Free Phone: 0800 37 34 15  
Fax: (44) (0) 1235 533420  
info.EMEA@bio-techne.com

### **General Contact Information**

www.novusbio.com  
Technical Support: nb-technical@bio-techne.com  
Orders: nb-customerservice@bio-techne.com  
General: novus@novusbio.com

### **Products Related to NBP1-30928**

---

NBP2-33376H	Blue Marker Antibody (6F4-F6) [HRP]
HAF008	Goat anti-Rabbit IgG Secondary Antibody [HRP]
NB7160	Goat anti-Rabbit IgG (H+L) Secondary Antibody [HRP]
NBP2-24891	Rabbit IgG Isotype Control

---

### **Limitations**

This product is for research use only and is not approved for use in humans or in clinical diagnosis. Primary Antibodies are guaranteed for 1 year from date of receipt.

For more information on our 100% guarantee, please visit [www.novusbio.com/guarantee](http://www.novusbio.com/guarantee)

Earn gift cards/discounts by submitting a review: [www.novusbio.com/reviews/submit/NBP1-30928](http://www.novusbio.com/reviews/submit/NBP1-30928)

Earn gift cards/discounts by submitting a publication using this product:  
[www.novusbio.com/publications](http://www.novusbio.com/publications)

