

# Product Datasheet

## CD3 epsilon Antibody (APA1/1) - BSA Free NBP1-30426

Unit Size: 0.1 mg

Store at 4C. Do not freeze.

[www.novusbio.com](http://www.novusbio.com)



[technical@novusbio.com](mailto:technical@novusbio.com)

Protocols, Publications, Related Products, Reviews, Research Tools and Images at:  
[www.novusbio.com/NBP1-30426](http://www.novusbio.com/NBP1-30426)

Updated 9/9/2025 v.20.1

Earn rewards for product  
reviews and publications.

Submit a publication at [www.novusbio.com/publications](http://www.novusbio.com/publications)

Submit a review at [www.novusbio.com/reviews/destination/NBP1-30426](http://www.novusbio.com/reviews/destination/NBP1-30426)



**NBP1-30426**

CD3 epsilon Antibody (APA1/1) - BSA Free

Product Information	
Unit Size	0.1 mg
Concentration	1.0 mg/ml
Storage	Store at 4C. Do not freeze.
Clonality	Monoclonal
Clone	APA1/1
Preservative	15mM Sodium Azide
Isotype	IgG1
Purity	Protein A purified
Buffer	Phosphate buffered saline (PBS), pH 7.4

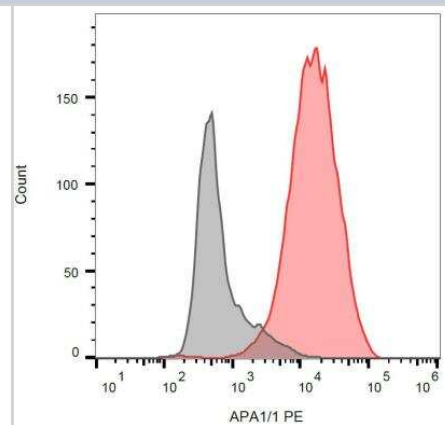
Product Description	
Description	Novus Biologicals Mouse CD3 epsilon Antibody (APA1/1) - BSA Free (NBP1-30426) is a monoclonal antibody validated for use in IHC, WB, Flow, ICC/IF and IP. All Novus Biologicals antibodies are covered by our 100% guarantee.
Host	Mouse
Gene ID	916
Gene Symbol	CD3E
Species	Human, Mouse
Reactivity Notes	Please note that this antibody is reactive to Mouse and derived from the same host, Mouse. Additional Mouse on Mouse blocking steps may be required for IHC and ICC experiments. Please contact Technical Support for more information.
Specificity/Sensitivity	The mouse monoclonal antibody APA1/1 recognizes an activation-dependent intracellular epitope of CD3 epsilon. Exposure of the epitope precedes CD3 phosphorylation and recruitment and activation of ZAP70, which initiates the signaling cascade produced by T-cell activation. APA1/1 provides the earliest known marker for TCR-mediated T cell activation.
Immunogen	Purified human CD3 proteins isolated from thymus

Product Application Details	
Applications	Western Blot, Flow Cytometry, Immunocytochemistry/ Immunofluorescence, Immunohistochemistry, Immunohistochemistry-Frozen, Immunoprecipitation, CyTOF-ready
Recommended Dilutions	Western Blot 1:1000, Flow Cytometry 1-4 ug/ml, Immunohistochemistry 1:10-1:500, Immunocytochemistry/ Immunofluorescence 1:10-1:500, Immunoprecipitation 1:50, Immunohistochemistry-Frozen 1:200, CyTOF-ready
Application Notes	Flow Cytometry: Sample preparation - At the end of stimulation of T cells, perform staining of surface markers (if required) in PBS + 0.1% BSA for 20 min. on ice. Wash with PBS and fix with 2% formaldehyde, 30 min on ice. Wash with PBS and incubate in PBS + 0,1% saponine, 5 min. RT. Incubate the cells in PBS + 1% BSA + 0.03% saponine, 15 min. on ice. Incubate with fluorescence-labeled APA1/1 antibody (1-2 ug/ml) in PBS + 1% BSA + 0.03% saponine in dark, 20 min. RT. Wash with PBS + 1% BSA + 0.03% saponine, resuspend in PBS. Immunocytochemistry: Fixed and permeabilized cells. The antibody can distinguish TCR-stimulated from non-stimulated cells. This antibody is CyTOF ready.

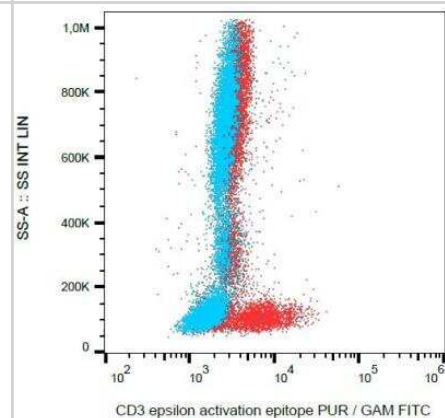


## Images

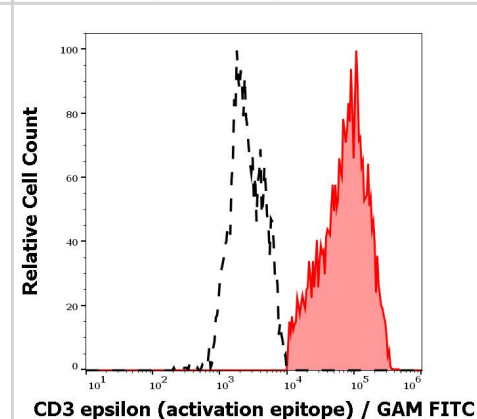
Flow Cytometry: CD3 epsilon Antibody (APA1/1) [NBP1-30426] - Intracellular staining of JURKAT cells with anti-CD3 epsilon activation epitope (APA1/1) PE.



Flow Cytometry: CD3 epsilon Antibody (APA1/1) [NBP1-30426] - Intracellular staining of human peripheral blood with anti-CD3 epsilon activation epitope (APA1/1) purified, GAM-FITC.



Separation of Jurkat cells stained anti-human CD3 activation epitope (APA1/1) purified antibody (concentration in sample 5 ug/ml, GAM FITC, red-filled) from Jurkat cells unstained by primary antibody (GAM FITC, black-dashed) in Analysis (intracellular staining).



## Procedures

### Flow Cytometry protocol for CD3 epsilon Antibody (NBP1-30426)

Flow Cytometry (NBP1-30426):

Positive control: Human T cells stimulated with anti-CD3 (MEM-57) antibody (1 mg/ml)

Sample preparation:

At the end of stimulation of T cells, perform staining of surface markers (if required) in PBS + 0.1% BSA for 20 min. on ice.

Wash with PBS and fix with 2% formaldehyde, 30 min on ice.

Wash with PBS and incubate in PBS + 0,1% saponine, 5 min. RT.

Incubate the cells in PBS + 1% BSA + 0.03% saponine, 15 min. on ice.

Incubate with fluorescence-labeled APA1/1 antibody (1-5 mg/ml) in PBS + 1% BSA + 0.03% saponine in dark, 20 min. RT.

Wash with PBS + 1% BSA + 0.03% saponine, resuspend in PBS.





### Novus Biologicals USA

10730 E. Briarwood Avenue  
Centennial, CO 80112  
USA  
Phone: 303.730.1950  
Toll Free: 1.888.506.6887  
Fax: 303.730.1966  
nb-customerservice@bio-techne.com

### Bio-Techne Canada

21 Canmotor Ave  
Toronto, ON M8Z 4E6  
Canada  
Phone: 905.827.6400  
Toll Free: 855.668.8722  
Fax: 905.827.6402  
canada.inquires@bio-techne.com

### Bio-Techne Ltd

19 Barton Lane  
Abingdon Science Park  
Abingdon, OX14 3NB, United Kingdom  
Phone: (44) (0) 1235 529449  
Free Phone: 0800 37 34 15  
Fax: (44) (0) 1235 533420  
info.EMEA@bio-techne.com

### General Contact Information

www.novusbio.com  
Technical Support: nb-technical@bio-techne.com  
Orders: nb-customerservice@bio-techne.com  
General: novus@novusbio.com

### Products Related to NBP1-30426

---

NBP2-33376H	Blue Marker Antibody (6F4-F6) [HRP]
HAF007	Goat anti-Mouse IgG Secondary Antibody [HRP]
NB7539	Goat anti-Mouse IgG (H+L) Secondary Antibody [HRP]
NBP1-97005-0.5mg	Mouse IgG1 Isotype Control (MG1)

---

### Limitations

This product is for research use only and is not approved for use in humans or in clinical diagnosis. Primary Antibodies are guaranteed for 1 year from date of receipt.

For more information on our 100% guarantee, please visit [www.novusbio.com/guarantee](http://www.novusbio.com/guarantee)

Earn gift cards/discounts by submitting a review: [www.novusbio.com/reviews/submit/NBP1-30426](http://www.novusbio.com/reviews/submit/NBP1-30426)

Earn gift cards/discounts by submitting a publication using this product:  
[www.novusbio.com/publications](http://www.novusbio.com/publications)

