

Product Datasheet

Recombinant Human Enolase 1 Protein NBP1-30262

Unit Size: 0.1 mg

Store at 4C short term. Aliquot and store at -20C long term. Avoid freeze-thaw cycles.

www.novusbio.com



technical@novusbio.com

Publications: 3

Protocols, Publications, Related Products, Reviews, Research Tools and Images at:
www.novusbio.com/NBP1-30262

Updated 12/16/2025 v.20.1

Earn rewards for product
reviews and publications.

Submit a publication at www.novusbio.com/publications

Submit a review at www.novusbio.com/reviews/destination/NBP1-30262



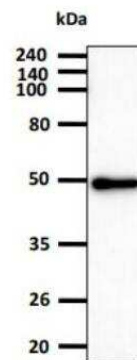
NBP1-30262

Recombinant Human Enolase 1 Protein

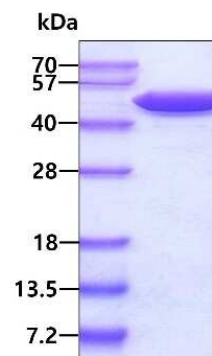
Product Information	
Unit Size	0.1 mg
Concentration	1 mg/ml
Storage	Store at 4C short term. Aliquot and store at -20C long term. Avoid freeze-thaw cycles.
Preservative	No Preservative
Purity	>95%, by SDS-PAGE
Buffer	20 mM Tris-HCl buffer (pH 7.5), 1 mM MgSO ₄ , 10% glycerol
Target Molecular Weight	47.1 kDa
Product Description	
Description	<p>An un-tagged recombinant protein corresponding to the amino acids 1-434 of Human Enolase 1</p> <p>Source: <i>E.coli</i></p> <p>Amino Acid Sequence: MSILKIHARE IFDSRGNPTV EVDLFTSKGL FRAAVPSGAS TGIYEALRLR DNDKTRYMGK GVSKAVEHIN KTIAPALVSK KLVNTEQEKI DKLMIEMDGT ENKSKFGANA ILGVSLAVCK AGAVEKGVPL YRHIADLAGN SEVILPVPAF NVINGGSHAG NKLAMQEFMI LPVGAANFRE AMRIGAEVYH NLKNVIKEY GKDATNVGDE GGFAPNILEN KEGLELLKTA IGKAGYTDKV VIGMDVAASE FFRSGKYDL DFKSPDDPSRY ISPDQLADLY KSFIDYPPV SIEDPFDQDD WGAWQKFTAS AGIQVVGDDL TVTNPKRIAK AVNEKSCNCL LLKVNQIGSV TESLQACKLA QANGWGVMVS HRSGETEDTF IADLVVGLCT GQIKTGAPCR SERLAKYNQL LRIEELGSK AKFAGRNFN PLAK</p>
Gene ID	2023
Gene Symbol	ENO1
Species	Human
Details of Functionality	Specific activity is > 20,000pmol/min/ug, and was obtained by measuring the decrease of NAD in absorbance at 340nm resulting from NADH at pH 6.5 at 37C.
Endotoxin Note	< 1.0 EU per 1 microgram of protein (determined by LAL method)
Product Application Details	
Applications	Western Blot, Microarray, SDS-Page, Bioactivity
Recommended Dilutions	Western Blot, SDS-Page, Microarray, Bioactivity
Application Notes	Use in Microarray reported in scientific literature (PMID:35059422)

Images

Western Blot: Recombinant Human Enolase 1 Protein [NBP1-30262] - The recombinant protein (50ng) was resolved by SDS-PAGE, transferred to PVDF membrane and probed with anti-human Enolase 1 antibody [NBP2-59457] (1:1000). Proteins were visualized using a goat anti-mouse secondary antibody conjugated to HRP and an ECL detection system. Lane 1.: ENO1 (Alpha-enolase) recombinant protein.



SDS-Page: Recombinant Human Enolase 1 Protein [NBP1-30262] - 3ug by SDS-PAGE under reducing condition and visualized by coomassie blue stain.



Publications

Qi S, Li J, He X et al. Identification and Validation of Novel Serum Autoantibodies Biomarkers for Staging Liver Fibrosis in Patients With Chronic Hepatitis B *Frontiers in medicine* 2022-01-04 [PMID: 35059422] (MiAr)

Ramirez-Celis A, Edmiston E, Schauer J, et al. Peptides of neuron specific enolase as potential ASD biomarkers: From discovery to epitope mapping *Brain Behav. Immun.* 2019-12-05 [PMID: 31812776] (WB, Monkey)

Lee A, Kim YC, Baek K et al. *Treponema denticola* enolase contributes to the production of antibodies against ENO1 but not to the progression of periodontitis *Virulence* 2018-07-13 [PMID: 30001173] (ELISA, Human)

Procedures

SDS-Page protocol for Enolase 1 Recombinant Protein (NBP1-30262)

SDS-PAGE (NBP1-30262):

1. Prepare 1,450ul assay buffer. The final concentrations are 81 mM Triethanolamine, 1.9 mM 2-phosphoglycerate, 0.12 mM beta- NADPH, 25 mM magnesium sulfate, 100 mM potassium chloride, 1.3 mM ADP, 4 unit pyruvate kinase, 6 unit L-lactic dehydrogenas. <p/>
2. Add 50ul of recombinant protein alpha-enolase in various concentrations(0.25 ug, 0.5 ug, and 0.1 ug) in assay buffer. <p/>
3. Mix by inversion and load 200 ul of reaction mix in to a plate well. <p/>
4. Record the decrease in A340nm for 5 minutes at 25C.





Novus Biologicals USA

10730 E. Briarwood Avenue
Centennial, CO 80112
USA
Phone: 303.730.1950
Toll Free: 1.888.506.6887
Fax: 303.730.1966
nb-customerservice@bio-techne.com

Bio-Techne Canada

21 Canmotor Ave
Toronto, ON M8Z 4E6
Canada
Phone: 905.827.6400
Toll Free: 855.668.8722
Fax: 905.827.6402
canada.inquires@bio-techne.com

Bio-Techne Ltd

19 Barton Lane
Abingdon Science Park
Abingdon, OX14 3NB, United Kingdom
Phone: (44) (0) 1235 529449
Free Phone: 0800 37 34 15
Fax: (44) (0) 1235 533420
info.EMEA@bio-techne.com

General Contact Information

www.novusbio.com
Technical Support: nb-technical@bio-techne.com
Orders: nb-customerservice@bio-techne.com
General: novus@novusbio.com

Products Related to NBP1-30262

NBP2-61192-20ug	Recombinant Mouse Enolase 1 His Protein
7954-GM-010/CF	GM-CSF [Unconjugated]
H00002023-M01	Enolase 1 Antibody (8G8) - Azide and BSA Free
NB300-109	Tyrosine Hydroxylase Antibody - Azide Free

Limitations

This product is for research use only and is not approved for use in humans or in clinical diagnosis. Peptides and proteins are guaranteed for 1 year from date of receipt.

For more information on our 100% guarantee, please visit www.novusbio.com/guarantee

Earn gift cards/discounts by submitting a review: www.novusbio.com/reviews/submit/NBP1-30262

Earn gift cards/discounts by submitting a publication using this product:
www.novusbio.com/publications

