

Product Datasheet

Lambda Light Chain Antibody (K22-Y)

NBP1-30142-0.1ml

Unit Size: 0.1 ml

Store at 4C short term. Aliquot and store at -20C long term. Avoid freeze-thaw cycles.

www.novusbio.com



technical@novusbio.com

Protocols, Publications, Related Products, Reviews, Research Tools and Images at:
www.novusbio.com/NBP1-30142

Updated 10/23/2024 v.20.1

Earn rewards for product reviews and publications.

Submit a publication at www.novusbio.com/publications

Submit a review at www.novusbio.com/reviews/destination/NBP1-30142



NBP1-30142-0.1ml

Lambda Light Chain Antibody (K22-Y)

Product Information	
Unit Size	0.1 ml
Concentration	Please see the vial label for concentration. If unlisted please contact technical services.
Storage	Store at 4C short term. Aliquot and store at -20C long term. Avoid freeze-thaw cycles.
Clonality	Monoclonal
Clone	K22-Y
Preservative	0.05% Sodium Azide
Isotype	IgG
Purity	Immunogen affinity purified
Buffer	20mM Tris/HCl (pH 8.0) and 20 mg/ml BSA

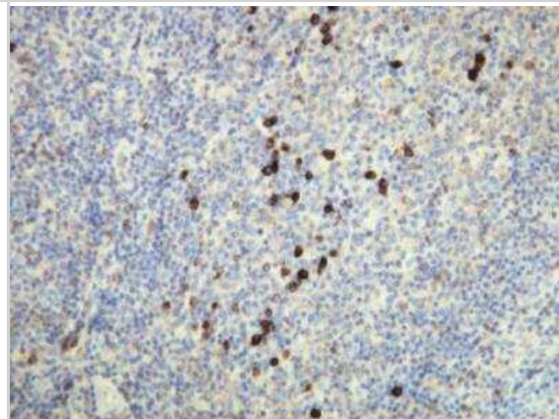
Product Description	
Description	This antibody is immunoaffinity purified with immunogenic peptide as a ligand.
Host	Rabbit
Gene ID	3537
Gene Symbol	IGLC1
Species	Human
Specificity/Sensitivity	This antibody is specific for the N terminus of the lambda light chain.
Immunogen	Peptide derived from N-terminal sequence of human lambda light chain IgG. Antibody recognizes the epitope between Ala50 - Ser68.
Notes	This antibody is immunoaffinity purified with immunogenic peptide as a ligand.

Product Application Details	
Applications	Immunohistochemistry, Immunohistochemistry-Paraffin
Recommended Dilutions	Immunohistochemistry 1:10-1:500, Immunohistochemistry-Paraffin 1:100-1:500
Application Notes	For use in Immunohistochemistry frozen and paraffin embedded sections. For 0.1ml, 0.5ml and 1.0ml sizes, use recommended dilutions. For 7.0ml and 15.0ml sizes, products should be used undiluted.

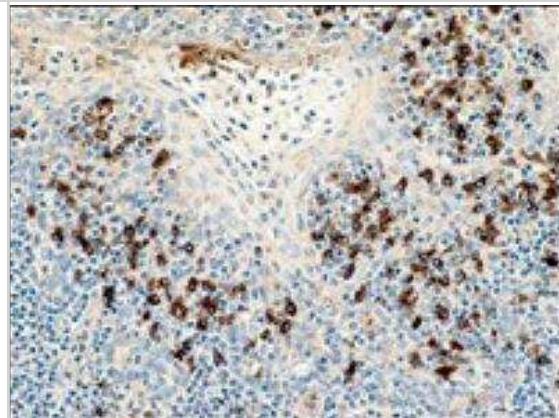


Images

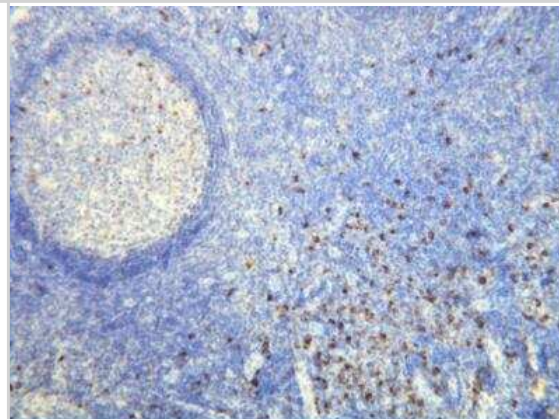
Immunohistochemistry-Paraffin: Human lambda light chain Antibody (K22-Y) [NBP1-30142] - Formalin fixed, paraffin embedded human tissues (4 um sections) stained with anti - Human Lambda light chain (DB 039) monospecific clonal antibody.



Immunohistochemistry-Paraffin: Human lambda light chain Antibody (K22-Y) [NBP1-30142] - Human lambda light chain Antibody (K22-Y) human tonsil tissue stained with anti-Human Lambda Light Chain antibody.



Immunohistochemistry-Paraffin: Human lambda light chain Antibody (K22-Y) [NBP1-30142] - Formalin fixed, paraffin embedded human tissues (4 um sections) stained with anti - Human Lambda light chain (DB 039) monospecific clonal antibody.





Novus Biologicals USA

10730 E. Briarwood Avenue
Centennial, CO 80112
USA
Phone: 303.730.1950
Toll Free: 1.888.506.6887
Fax: 303.730.1966
nb-customerservice@bio-techne.com

Bio-Techne Canada

21 Canmotor Ave
Toronto, ON M8Z 4E6
Canada
Phone: 905.827.6400
Toll Free: 855.668.8722
Fax: 905.827.6402
canada.inquires@bio-techne.com

Bio-Techne Ltd

19 Barton Lane
Abingdon Science Park
Abingdon, OX14 3NB, United Kingdom
Phone: (44) (0) 1235 529449
Free Phone: 0800 37 34 15
Fax: (44) (0) 1235 533420
info.EMEA@bio-techne.com

General Contact Information

www.novusbio.com
Technical Support: nb-technical@bio-techne.com
Orders: nb-customerservice@bio-techne.com
General: novus@novusbio.com

Products Related to NBP1-30142-0.1ml

HAF008	Goat anti-Rabbit IgG Secondary Antibody [HRP]
NB7160	Goat anti-Rabbit IgG (H+L) Secondary Antibody [HRP]
NBP2-24891	Rabbit IgG Isotype Control
NB7552	Goat anti-Mouse Lambda Light Chain Secondary Antibody [HRP]

Limitations

This product is for research use only and is not approved for use in humans or in clinical diagnosis. Primary Antibodies are guaranteed for 1 year from date of receipt.

For more information on our 100% guarantee, please visit www.novusbio.com/guarantee

Earn gift cards/discounts by submitting a review: www.novusbio.com/reviews/submit/NBP1-30142

Earn gift cards/discounts by submitting a publication using this product:
www.novusbio.com/publications

