

Product Datasheet

WDR5 Antibody NBP1-30070

Unit Size: 0.1 ml

Store at 4C. Do not freeze.

www.novusbio.com



technical@novusbio.com

Protocols, Publications, Related Products, Reviews, Research Tools and Images at:
www.novusbio.com/NBP1-30070

Updated 9/9/2025 v.20.1

Earn rewards for product
reviews and publications.

Submit a publication at www.novusbio.com/publications

Submit a review at www.novusbio.com/reviews/destination/NBP1-30070



NBP1-30070

WDR5 Antibody

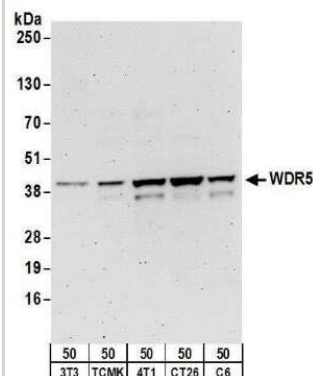
Product Information	
Unit Size	0.1 ml
Concentration	0.2 mg/ml
Storage	Store at 4C. Do not freeze.
Clonality	Polyclonal
Preservative	0.09% Sodium Azide
Isotype	IgG
Purity	Immunogen affinity purified
Buffer	TBS and 0.1% BSA

Product Description	
Description	Novus Biologicals Rabbit WDR5 Antibody (NBP1-30070) is a polyclonal antibody validated for use in IHC, WB and Simple Western. All Novus Biologicals antibodies are covered by our 100% guarantee.
Host	Rabbit
Gene ID	11091
Gene Symbol	WDR5
Species	Human, Mouse, Rat
Reactivity Notes	D. melanogaster, X. tropicalis (100%).
Immunogen	maps to a region between residue 50 and 100 of human WD repeat domain 5 using the numbering given in entry NP_060058.1

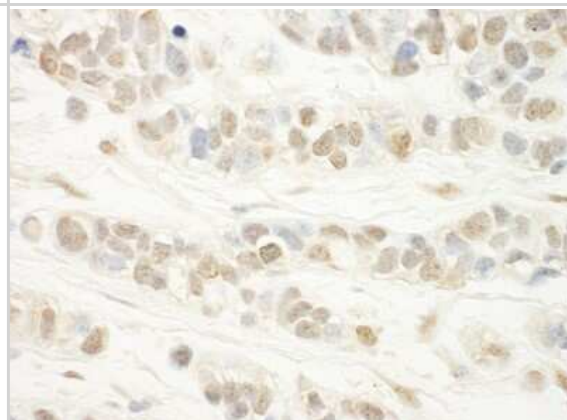
Product Application Details	
Applications	Western Blot, Simple Western, Immunohistochemistry-Paraffin, Immunohistochemistry, Immunoprecipitation (Negative)
Recommended Dilutions	Western Blot 1:2000-1:10000, Simple Western, Immunohistochemistry 1:200 - 1:1000, Immunohistochemistry-Paraffin 1:200 - 1:1000, Immunoprecipitation (Negative)
Application Notes	IP Not recommended. Epitope retrieval with citrate buffer pH 6.0 is recommended for FFPE tissue sections. See Simple Western Antibody Database for Simple Western validation: tested in Human Cancer Cell Line; antibody dilution of 1:10; separated by size; detects a band at 47 kDa

Images

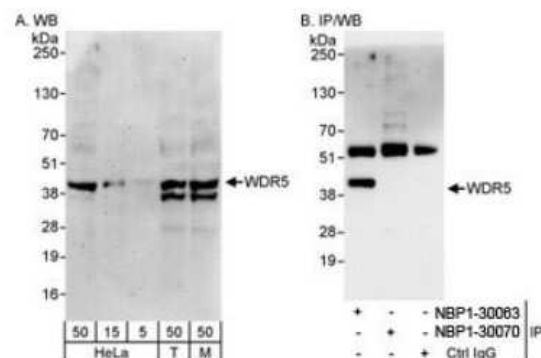
Western Blot: WDR5 Antibody [NBP1-30070] - Detection of mouse and rat WDR5 by western blot. Samples: Whole cell lysate (50 ug) from NIH 3T3, TCMK-1, 4T1, CT26.WT, and rat C6 cells. Antibodies: Affinity purified rabbit anti-WDR5 antibody NBP1-30070 used for WB at 0.1 ug/ml. Detection: Chemiluminescence with an exposure time of 3 minutes.



Immunohistochemistry-Paraffin: WDR5 Antibody [NBP1-30070] - Sample: FFPE section of human breast carcinoma. Antibody: Affinity purified rabbit anti- WDR5 used at a dilution of 1:200 (1ug/ml). Detection: DAB



Western Blot: WDR5 Antibody [NBP1-30070] - Whole cell lysate from HeLa, 293T, and mouse NIH3T3 cells. WDR5 was successfully IPed by NBP1-30063.





Novus Biologicals USA

10730 E. Briarwood Avenue
Centennial, CO 80112
USA
Phone: 303.730.1950
Toll Free: 1.888.506.6887
Fax: 303.730.1966
nb-customerservice@bio-techne.com

Bio-Techne Canada

21 Canmotor Ave
Toronto, ON M8Z 4E6
Canada
Phone: 905.827.6400
Toll Free: 855.668.8722
Fax: 905.827.6402
canada.inquires@bio-techne.com

Bio-Techne Ltd

19 Barton Lane
Abingdon Science Park
Abingdon, OX14 3NB, United Kingdom
Phone: (44) (0) 1235 529449
Free Phone: 0800 37 34 15
Fax: (44) (0) 1235 533420
info.EMEA@bio-techne.com

General Contact Information

www.novusbio.com
Technical Support: nb-technical@bio-techne.com
Orders: nb-customerservice@bio-techne.com
General: novus@novusbio.com

Products Related to NBP1-30070

NBP2-33376H	Blue Marker Antibody (6F4-F6) [HRP]
HAF008	Goat anti-Rabbit IgG Secondary Antibody [HRP]
NB7160	Goat anti-Rabbit IgG (H+L) Secondary Antibody [HRP]
NBP2-24891	Rabbit IgG Isotype Control

Limitations

This product is for research use only and is not approved for use in humans or in clinical diagnosis. Primary Antibodies are guaranteed for 1 year from date of receipt.

For more information on our 100% guarantee, please visit www.novusbio.com/guarantee

Earn gift cards/discounts by submitting a review: www.novusbio.com/reviews/submit/NBP1-30070

Earn gift cards/discounts by submitting a publication using this product:
www.novusbio.com/publications

