

# Product Datasheet

## Calretinin Antibody - Azide and BSA Free NBP1-30050

Unit Size: 0.1 ml

Store at -20C. Avoid freeze-thaw cycles.

[www.novusbio.com](http://www.novusbio.com)



[technical@novusbio.com](mailto:technical@novusbio.com)

Protocols, Publications, Related Products, Reviews, Research Tools and Images at:  
[www.novusbio.com/NBP1-30050](http://www.novusbio.com/NBP1-30050)

Updated 10/23/2024 v.20.1

Earn rewards for product  
reviews and publications.

Submit a publication at [www.novusbio.com/publications](http://www.novusbio.com/publications)

Submit a review at [www.novusbio.com/reviews/destination/NBP1-30050](http://www.novusbio.com/reviews/destination/NBP1-30050)



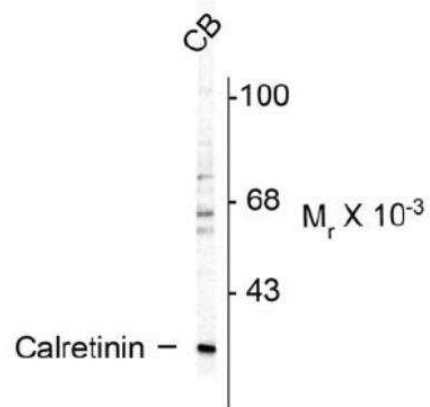
**NBP1-30050**

Calretinin Antibody - Azide and BSA Free

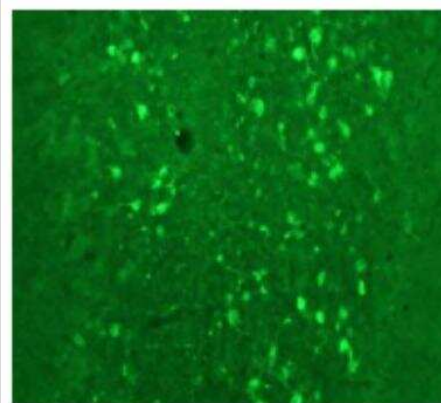
Product Information	
<b>Unit Size</b>	0.1 ml
<b>Concentration</b>	Please see the vial label for concentration. If unlisted please contact technical services.
<b>Storage</b>	Store at -20C. Avoid freeze-thaw cycles.
<b>Clonality</b>	Polyclonal
<b>Preservative</b>	No Preservative
<b>Isotype</b>	IgG
<b>Purity</b>	Protein G purified
<b>Buffer</b>	10mM Tris and 0.1M NaCl
<b>Target Molecular Weight</b>	29 kDa
Product Description	
<b>Description</b>	Recommended that the undiluted antibody be aliquoted into smaller working volumes (10-30 uL/vial depending on usage).
<b>Host</b>	Sheep
<b>Gene ID</b>	794
<b>Gene Symbol</b>	CALB2
<b>Species</b>	Rat, Guinea Pig
<b>Reactivity Notes</b>	Tested in Rat. It is expected that this antibody will also react with human, mouse and non-human primates.
<b>Marker</b>	Mesothelial Cell Marker
<b>Specificity/Sensitivity</b>	Specific for the ~29 kDa Calretinin protein in Western blots. The antibody also works well for immunohistochemistry on formalin or paraformaldehyde perfused rat brain tissue sections.
<b>Immunogen</b>	Purified guinea pig calretinin. Accession # P47728
Product Application Details	
<b>Applications</b>	Western Blot, Immunohistochemistry
<b>Recommended Dilutions</b>	Western Blot 1:1000, Immunohistochemistry 1:10 - 1:500

**Images**

Western Blot: Calretinin Antibody [NBP1-30050] - Rat cerebellum (CB) lysate showing specific immunolabeling of the ~ 29k calretinin protein.



Immunohistochemistry: Calretinin Antibody [NBP1-30050] - Immunostaining of rat cerebellum showing fluorescence of calretinin containing cells.





### **Novus Biologicals USA**

10730 E. Briarwood Avenue  
Centennial, CO 80112  
USA  
Phone: 303.730.1950  
Toll Free: 1.888.506.6887  
Fax: 303.730.1966  
nb-customerservice@bio-techne.com

### **Bio-Techne Canada**

21 Canmotor Ave  
Toronto, ON M8Z 4E6  
Canada  
Phone: 905.827.6400  
Toll Free: 855.668.8722  
Fax: 905.827.6402  
canada.inquires@bio-techne.com

### **Bio-Techne Ltd**

19 Barton Lane  
Abingdon Science Park  
Abingdon, OX14 3NB, United Kingdom  
Phone: (44) (0) 1235 529449  
Free Phone: 0800 37 34 15  
Fax: (44) (0) 1235 533420  
info.EMEA@bio-techne.com

### **General Contact Information**

www.novusbio.com  
Technical Support: nb-technical@bio-techne.com  
Orders: nb-customerservice@bio-techne.com  
General: novus@novusbio.com

### **Products Related to NBP1-30050**

---

HAF016	Donkey anti-Sheep IgG Secondary Antibody [HRP]
NL010	Donkey anti-Sheep IgG Secondary Antibody [NL557]
NBP1-97055-10mg	Sheep IgG Isotype Control
NBP1-48344-0.1mg	Recombinant Human Calretinin His Protein

---

### **Limitations**

This product is for research use only and is not approved for use in humans or in clinical diagnosis. Primary Antibodies are guaranteed for 1 year from date of receipt.

For more information on our 100% guarantee, please visit [www.novusbio.com/guarantee](http://www.novusbio.com/guarantee)

Earn gift cards/discounts by submitting a review: [www.novusbio.com/reviews/submit/NBP1-30050](http://www.novusbio.com/reviews/submit/NBP1-30050)

Earn gift cards/discounts by submitting a publication using this product:  
[www.novusbio.com/publications](http://www.novusbio.com/publications)

