

Product Datasheet

Adropin Antibody - BSA Free NBP1-26387

Unit Size: 0.1 ml

Store at 4C short term. Aliquot and store at -20C long term. Avoid freeze-thaw cycles.

www.novusbio.com



technical@novusbio.com

Publications: 3

Protocols, Publications, Related Products, Reviews, Research Tools and Images at:
www.novusbio.com/NBP1-26387

Updated 9/9/2025 v.20.1

Earn rewards for product
reviews and publications.

Submit a publication at www.novusbio.com/publications

Submit a review at www.novusbio.com/reviews/destination/NBP1-26387



NBP1-26387

Adropin Antibody - BSA Free

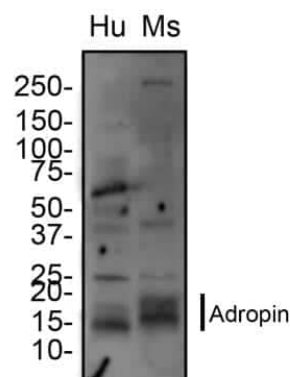
Product Information	
Unit Size	0.1 ml
Concentration	1.11 mg/ml
Storage	Store at 4C short term. Aliquot and store at -20C long term. Avoid freeze-thaw cycles.
Clonality	Polyclonal
Preservative	0.1% Sodium Azide
Isotype	IgG
Purity	Immunogen affinity purified
Buffer	PBS and 30% Glycerol
Target Molecular Weight	8 kDa

Product Description	
Description	Novus Biologicals Rabbit Adropin Antibody - BSA Free (NBP1-26387) is a polyclonal antibody validated for use in WB. Anti-Adropin Antibody: Cited in 3 publications. All Novus Biologicals antibodies are covered by our 100% guarantee.
Host	Rabbit
Gene ID	375704
Gene Symbol	ENHO
Species	Human, Mouse
Reactivity Notes	88% sequence identity with bovine protein.
Immunogen	Synthetic peptide made to an internal portion of human Adropin (within residues 10-60). [Swiss-Prot# Q6UWT2]

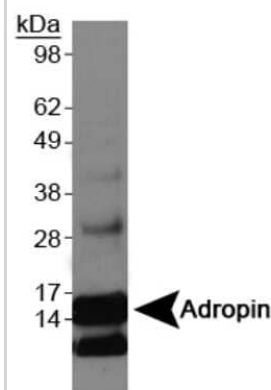
Product Application Details	
Applications	Western Blot
Recommended Dilutions	Western Blot 2 ug/ml
Application Notes	A band can be seen at 15 kDa in Western Blot. The observed molecular weight of the protein may vary from the listed predicted molecular weight due to post translational modifications, post translation cleavages, relative charges, and other experimental factors.

Images

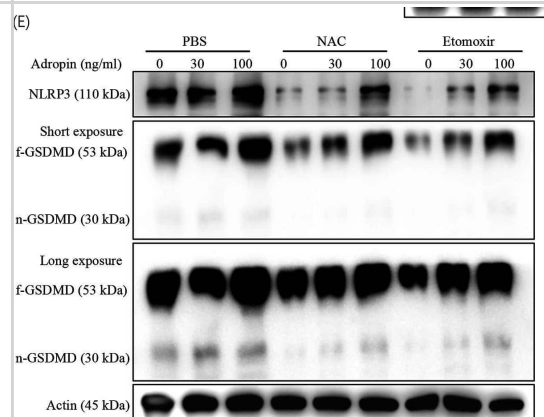
Western Blot: Adropin Antibody [NBP1-26387] - Total protein from Human and Mouse brain was separated on a 4-20% gel by SDS-PAGE, transferred to PVDF membrane and blocked in 5% non-fat milk in TBST. The membrane was probed with 2.0 ug/mL anti-Adropin in 1% non-fat milk in TBST and detected with an anti-rabbit HRP secondary antibody using chemiluminescence.



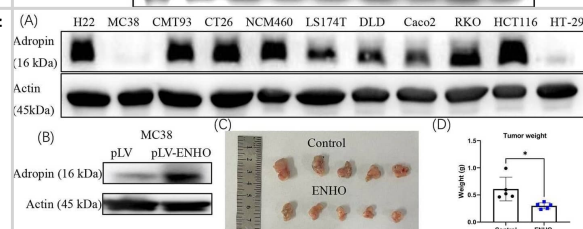
Western Blot: Adropin Antibody [NBP1-26387] - Western blot on Adropin overexpression lysate.



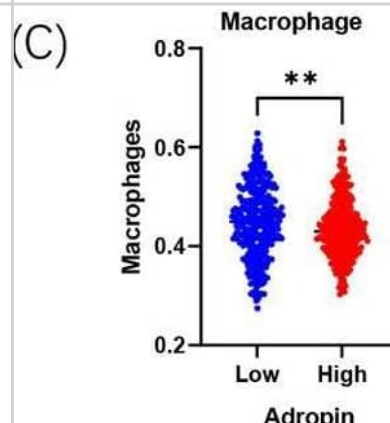
Metabolic molecules in macrophage with adropin treatment. (A) Variations of key molecules involved in glycol-lipid metabolism. (B) Akt, mTOR, and AMPK levels of adropin-treated macrophages. (C) Detection of the above metabolism molecules in ENHO^{-/-} macrophages. (D) Akt, mTOR, and AMPK levels of ENHO^{-/-} macrophages. (E) Effect of ROS depletion or CPT1 α inhibition on inflammasome activation. Each experiment was repeated at least twice Image collected and cropped by CiteAb from the following open publication (<https://pubmed.ncbi.nlm.nih.gov/37904094>), licensed under a CC-BY license. Not internally tested by Novus Biologicals.



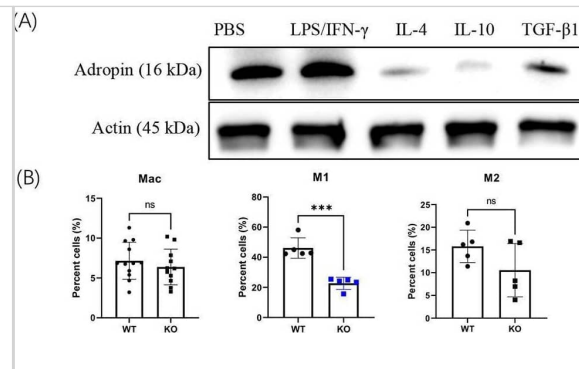
Ectopic adropin expression inhibits tumor growth in vivo. (A) Presence of adropin in the indicated cell lines. (B) Ectopic adropin expression in MC38 cells by lentivirus transfection. (C) In vivo tumors formed by MC38 and MC38-ENHO cells. (D) Weights of tumors. Detection of macrophages (E) and CD8⁺ T cells (F) in tumors. (G) Phenotypic analysis of tumor-infiltrated macrophages. The experiment was repeated twice. ns, no significance; *, $P < 0.05$; **, $P < 0.01$; ***, $P < 0.001$ Image collected and cropped by CiteAb from the following open publication (<https://pubmed.ncbi.nlm.nih.gov/37904094>), licensed under a CC-BY license. Not internally tested by Novus Biologicals.



Correlational analysis of adropin level with local macrophages in CRC. Correlation study of adropin with CD68, ARG1, or iNOS in tumor foci (A) or stromal cells (B). (C) Comparison of infiltrated macrophages between high and low ENHO transcriptions. (D) Correlation study of GPR19 with adropin in foci and stroma. (E) Correlation study of GPR19 with CD68, ARG1, or iNOS. Double staining of adropin and CD68, ARG1, iNOS, or PD-L1 (F) and statistics (G). Double staining of GPR19 and CD68, ARG1, iNOS, or PD-L1 (H) and statistics (I). ns, no significance; *, $P < 0.05$; **, $P < 0.01$; ***, $P < 0.001$ Image collected and cropped by CiteAb from the following open publication (<https://pubmed.ncbi.nlm.nih.gov/37904094>), licensed under a CC-BY license. Not internally tested by Novus Biologicals.



Macrophages in ENHO^{-/-} mice. (A) Adropin variations in macrophages after the treatment of LPS/IFN γ , IL-4, IL-10, or TGF- β 1. (B) Macrophage subsets in ENHO^{-/-} mice. (C) CD86 and CD206 expression on WT or KO macrophages treated by LPS/IFN γ or IL-4. (D) Inhibitory effects of WT or KO macrophages on CD8⁺ T cells. Inflammasome-associated molecules (E) and effector molecules (F) of WT or KO macrophages. The experiment was carried-out three times. ns, no significance; *, P < 0.05; **, P < 0.01; ***, P < 0.001 Image collected and cropped by CiteAb from the following open publication (<https://pubmed.ncbi.nlm.nih.gov/37904094>), licensed under a CC-BY license. Not internally tested by Novus Biologicals.



Publications

Jia L, Liao L, Jiang Y et al. Low-dose adropin stimulates inflammasome activation of macrophage via mitochondrial ROS involved in colorectal cancer progression BMC cancer 2023-10-30 [PMID: 37904094] (WB, Human)

Lee MJ, Zhu J, An JH et al. A transcriptomic analysis of cerebral microvessels reveals the involvement of Notch1 signaling in endothelial mitochondrial-dysfunction-dependent BBB disruption Fluids and barriers of the CNS 2022-08-26 [PMID: 36028880] (WB, Mouse)

Details:

Proteins from isolated brain microvessels and brain tissue, dilution used 1:500

Yang W, Liu L, Wei Y et al. Exercise suppresses NLRP3 inflammasome activation in mice with diet-induced NASH: a plausible role of adropin Laboratory investigation; a journal of technical methods and pathology 2020-12-02 [PMID: 33268842] (WB)

Procedures

Serum protocol for Adropin Antibody (NBP1-26387)

Adropin Antibody:

Procedure Guide for NBP1-26387 - Adropin Antibody

Western Blot Protocol

1. Perform SDS-PAGE (4-12% MOPS) on samples to be analyzed, loading 40 ug of total protein per lane.
2. Transfer proteins to Nitrocellulose according to the instructions provided by the manufacturer of the transfer apparatus.
3. Rinse membrane with dH₂O and then stain the blot using Ponceau S for 1-2 minutes to access the transfer of proteins onto the nitrocellulose membrane. Rinse the blot in water to remove excess stain and mark the lane locations and locations of molecular weight markers using a pencil.
4. Rinse the blot in TBS for approximately 5 minutes.
5. Block the membrane using 5% BSA in TBS + Tween, 1 hour at RT.
6. Rinse the membrane in dH₂O and then wash the membrane in wash buffer [TBS + 0.1% Tween] 3 times for 10 minutes each.
7. Dilute the rabbit anti-Adropin primary antibody (NBP1-26387) in blocking buffer and incubate 1 hour at room temperature.
8. Rinse the membrane in dH₂O and then wash the membrane in wash buffer [TBS + 0.1% Tween] 3 times for 10 minutes each.
9. Apply the diluted rabbit-IgG HRP-conjugated secondary antibody in blocking buffer (as per manufacturers instructions) and incubate 1 hour at room temperature.
10. Wash the blot in wash buffer [TBS + 0.1% Tween] 3 times for 10 minutes each (this step can be repeated as required to reduce background).
11. Apply the detection reagent of choice in accordance with the manufacturers instructions (Pierce ECL).

Note: Tween-20 can be added to the blocking or antibody dilution buffer at a final concentration of 0.05-0.2%, provided

it does not interfere with antibody-antigen binding.

(c) 2009 Novus Biologicals - Adropin Antibody - Page 1



Novus Biologicals USA

10730 E. Briarwood Avenue
Centennial, CO 80112
USA
Phone: 303.730.1950
Toll Free: 1.888.506.6887
Fax: 303.730.1966
nb-customerservice@bio-techne.com

Bio-Techne Canada

21 Canmotor Ave
Toronto, ON M8Z 4E6
Canada
Phone: 905.827.6400
Toll Free: 855.668.8722
Fax: 905.827.6402
canada.inquires@bio-techne.com

Bio-Techne Ltd

19 Barton Lane
Abingdon Science Park
Abingdon, OX14 3NB, United Kingdom
Phone: (44) (0) 1235 529449
Free Phone: 0800 37 34 15
Fax: (44) (0) 1235 533420
info.EMEA@bio-techne.com

General Contact Information

www.novusbio.com
Technical Support: nb-technical@bio-techne.com
Orders: nb-customerservice@bio-techne.com
General: novus@novusbio.com

Products Related to NBP1-26387

NB820-59657	Mouse Brain Whole Tissue Lysate (Adult Whole Normal)
NBP1-26387PEP	Adropin Antibody Blocking Peptide
NBP2-33376H	Blue Marker Antibody (6F4-F6) [HRP]
HAF008	Goat anti-Rabbit IgG Secondary Antibody [HRP]
NB7160	Goat anti-Rabbit IgG (H+L) Secondary Antibody [HRP]
NBP2-24891	Rabbit IgG Isotype Control

Limitations

This product is for research use only and is not approved for use in humans or in clinical diagnosis. Primary Antibodies are guaranteed for 1 year from date of receipt.

For more information on our 100% guarantee, please visit www.novusbio.com/guarantee

Earn gift cards/discounts by submitting a review: www.novusbio.com/reviews/submit/NBP1-26387

Earn gift cards/discounts by submitting a publication using this product:
www.novusbio.com/publications



