

# Product Datasheet

## Ferroportin/SLC40A1 Antibody [Alexa Fluor® 488] NBP1-21502AF488

Unit Size: 0.1 ml

Store at 4C in the dark.

[www.novusbio.com](http://www.novusbio.com)



[technical@novusbio.com](mailto:technical@novusbio.com)

Protocols, Publications, Related Products, Reviews, Research Tools and Images at:  
[www.novusbio.com/NBP1-21502AF488](http://www.novusbio.com/NBP1-21502AF488)

Updated 10/23/2024 v.20.1

Earn rewards for product  
reviews and publications.

Submit a publication at [www.novusbio.com/publications](http://www.novusbio.com/publications)

Submit a review at [www.novusbio.com/reviews/destination/NBP1-21502AF488](http://www.novusbio.com/reviews/destination/NBP1-21502AF488)



**NBP1-21502AF488**

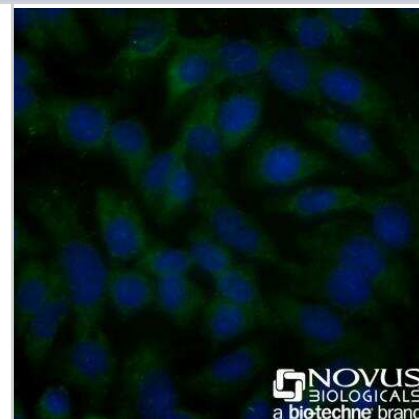
Ferroportin/SLC40A1 Antibody [Alexa Fluor® 488]

| <b>Product Information</b>         |  |
|------------------------------------|--|
| <b>Unit Size</b>                   | 0.1 ml   |
| <b>Concentration</b>               | Please see the vial label for concentration. If unlisted please contact technical services.  |
| <b>Storage</b>                     | Store at 4C in the dark.   |
| <b>Clonality</b>                   | Polyclonal   |
| <b>Preservative</b>                | 0.05% Sodium Azide   |
| <b>Isotype</b>                     | IgG  |
| <b>Conjugate</b>                   | Alexa Fluor 488  |
| <b>Purity</b>                      | Immunogen affinity purified  |
| <b>Buffer</b>                      | 50mM Sodium Borate   |
| <b>Product Description</b>         |  |
| <b>Host</b>                        | Rabbit   |
| <b>Gene ID</b>                     | 30061  |
| <b>Gene Symbol</b>                 | SLC40A1  |
| <b>Species</b>                     | Human, Mouse, Rat, Porcine, Bovine   |
| <b>Reactivity Notes</b>            | Rat reactivity reported in scientific literature (PMID: 24895335).   |
| <b>Immunogen</b>                   | This Ferroportin/SLC40A1 Antibody was developed against a synthetic peptide made to an internal portion of human Ferroportin 1 (within residues 250-300). [Swiss-Prot: Q9NP59]   |
| <b>Notes</b>                       | Alexa Fluor (R) products are provided under an intellectual property license from Life Technologies Corporation. The purchase of this product conveys to the buyer the non-transferable right to use the purchased product and components of the product only in research conducted by the buyer (whether the buyer is an academic or for-profit entity). The sale of this product is expressly conditioned on the buyer not using the product or its components, or any materials made using the product or its components, in any activity to generate revenue, which may include, but is not limited to use of the product or its components: (i) in manufacturing; (ii) to provide a service, information, or data in return for payment; (iii) for therapeutic, diagnostic or prophylactic purposes; or (iv) for resale, regardless of whether they are resold for use in research. For information on purchasing a license to this product for purposes other than as described above, contact Life Technologies Corporation, 5791 Van Allen Way, Carlsbad, CA 92008 USA or <a href="mailto:outlicensing@lifetech.com">outlicensing@lifetech.com</a> . This conjugate is made on demand. Actual recovery may vary from the stated volume of this product. The volume will be greater than or equal to the unit size stated on the datasheet. |
| <b>Product Application Details</b> |  |
| <b>Applications</b>                | Western Blot, Flow Cytometry, Flow (Intracellular), Immunocytochemistry/Immunofluorescence, Immunohistochemistry, Immunohistochemistry-Paraffin  |
| <b>Recommended Dilutions</b>       | Western Blot, Flow Cytometry, Immunohistochemistry, Immunocytochemistry/Immunofluorescence, Immunohistochemistry-Paraffin, Flow (Intracellular)  |
| <b>Application Notes</b>           | Optimal dilution of this antibody should be experimentally determined.   |



## Images

HeLa cells were fixed and permeabilized for 10 minutes using -20C MeOH. The cells were incubated with Ferroportin/SLC40A1 Antibody [Alexa Fluor(R) 488] [NBP1-21502AF488] at 20ug/ml for 1 hour at room temperature. Nuclei were counterstained with DAPI (blue). Cells were imaged using a 40X objective.





### **Novus Biologicals USA**

10730 E. Briarwood Avenue  
Centennial, CO 80112  
USA  
Phone: 303.730.1950  
Toll Free: 1.888.506.6887  
Fax: 303.730.1966  
nb-customerservice@bio-techne.com

### **Bio-Techne Canada**

21 Canmotor Ave  
Toronto, ON M8Z 4E6  
Canada  
Phone: 905.827.6400  
Toll Free: 855.668.8722  
Fax: 905.827.6402  
canada.inquires@bio-techne.com

### **Bio-Techne Ltd**

19 Barton Lane  
Abingdon Science Park  
Abingdon, OX14 3NB, United Kingdom  
Phone: (44) (0) 1235 529449  
Free Phone: 0800 37 34 15  
Fax: (44) (0) 1235 533420  
info.EMEA@bio-techne.com

### **General Contact Information**

www.novusbio.com  
Technical Support: nb-technical@bio-techne.com  
Orders: nb-customerservice@bio-techne.com  
General: novus@novusbio.com

### **Products Related to NBP1-21502AF488**

---

|                 |   |
|-----------------|---|
| NBP2-24982      | Rabbit IgG Isotype Control [Alexa Fluor® 488]   |
| NBP1-21502AF700 | Ferroportin/SLC40A1 Antibody [Alexa Fluor® 700] |
| NBP1-21502PEP   | Ferroportin/SLC40A1 Antibody Blocking Peptide   |
| M6000B-1        | IL-6 [HRP]                                      |

---

### **Limitations**

This product is for research use only and is not approved for use in humans or in clinical diagnosis. Primary Antibodies are guaranteed for 1 year from date of receipt.

For more information on our 100% guarantee, please visit [www.novusbio.com/guarantee](http://www.novusbio.com/guarantee)

Earn gift cards/discounts by submitting a review: [www.novusbio.com/reviews/submit/NBP1-21502AF488](http://www.novusbio.com/reviews/submit/NBP1-21502AF488)

Earn gift cards/discounts by submitting a publication using this product:  
[www.novusbio.com/publications](http://www.novusbio.com/publications)

