

Product Datasheet

Casein Kinase 1 delta Antibody NBP1-21376

Unit Size: 0.1 ml

Store at 4C. Do not freeze.

www.novusbio.com



technical@novusbio.com

Reviews: 1 Publications: 2

Protocols, Publications, Related Products, Reviews, Research Tools and Images at:
www.novusbio.com/NBP1-21376

Updated 3/4/2026 v.20.1

**Earn rewards for product
reviews and publications.**

Submit a publication at www.novusbio.com/publications

Submit a review at www.novusbio.com/reviews/destination/NBP1-21376



NBP1-21376

Casein Kinase 1 delta Antibody

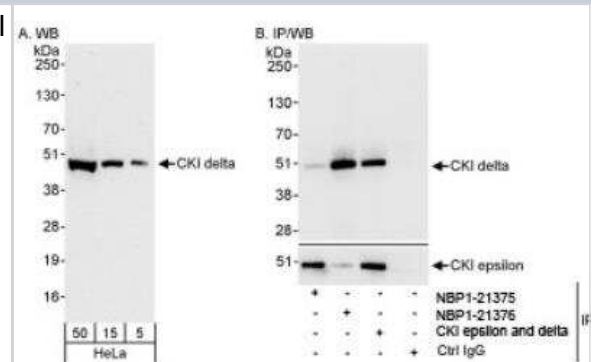
| Product Information | |
|---------------------|-----------------------------|
| Unit Size | 0.1 ml |
| Concentration | 0.2 mg/ml |
| Storage | Store at 4C. Do not freeze. |
| Clonality | Polyclonal |
| Preservative | 0.09% Sodium Azide |
| Isotype | IgG |
| Purity | Immunogen affinity purified |
| Buffer | TBS and 0.1% BSA |

| Product Description | |
|---------------------|--|
| Host | Rabbit |
| Gene ID | 1453 |
| Gene Symbol | CSNK1D |
| Species | Human, Mouse |
| Reactivity Notes | Mouse reactivity reported in scientific literature (PMID: 28886335). |
| Immunogen | The immunogen recognized by this antibody maps to a region between residue 359 and 409 of human casein kinase 1, delta using the numbering given in entry NP_620693.1 (GeneID 1453). This antibody may have slight crossreactivity with CKI epsilon, which has a similar sequence. |

| Product Application Details | |
|-----------------------------|--|
| Applications | Western Blot, Immunoprecipitation |
| Recommended Dilutions | Western Blot 1:2000-1:10000, Immunoprecipitation 2-5 ug/mg lysate |
| Application Notes | Western blot of lysates performed using standard western blot reagents and 4-20% SDS-PAGE. |

Images

Western Blot: Casein Kinase 1 delta Antibody [NBP1-21376] - Whole cell lysate from HeLa cells. CKI delta was also IPed by another antibody directed to an epitope that is common to CKI epsilon and delta. CKI epsilon was IPed and blotted using NBP1-21375.

**Publications**

Cao X, Wang L, Selby CP et al. Analysis of mammalian circadian clock protein complexes over a circadian cycle
Journal of Biological Chemistry 2023-03-01 [PMID: 36682495] (Mouse)

Aryal RP, Kwak PB, Tamayo AG et al. Macromolecular Assemblies of the Mammalian Circadian Clock Mol. Cell 2017
-09-07 [PMID: 28886335] (Mouse)



Novus Biologicals USA

10730 E. Briarwood Avenue
Centennial, CO 80112
USA
Phone: 303.730.1950
Toll Free: 1.888.506.6887
Fax: 303.730.1966
nb-customerservice@bio-techne.com

Bio-Techne Canada

21 Canmotor Ave
Toronto, ON M8Z 4E6
Canada
Phone: 905.827.6400
Toll Free: 855.668.8722
Fax: 905.827.6402
canada.inquires@bio-techne.com

Bio-Techne Ltd

19 Barton Lane
Abingdon Science Park
Abingdon, OX14 3NB, United Kingdom
Phone: (44) (0) 1235 529449
Free Phone: 0800 37 34 15
Fax: (44) (0) 1235 533420
info.EMEA@bio-techne.com

General Contact Information

www.novusbio.com
Technical Support: nb-technical@bio-techne.com
Orders: nb-customerservice@bio-techne.com
General: novus@novusbio.com

Products Related to NBP1-21376

| | |
|------------------|---|
| HAF008 | Goat anti-Rabbit IgG Secondary Antibody [HRP] |
| NB7160 | Goat anti-Rabbit IgG (H+L) Secondary Antibody [HRP] |
| NBP2-24891 | Rabbit IgG Isotype Control |
| NBP2-51703-0.1mg | Recombinant Human Casein Kinase 1 delta His Protein |

Limitations

This product is for research use only and is not approved for use in humans or in clinical diagnosis. Primary Antibodies are guaranteed for 1 year from date of receipt.

For more information on our 100% guarantee, please visit www.novusbio.com/guarantee

Earn gift cards/discounts by submitting a review: www.novusbio.com/reviews/submit/NBP1-21376

Earn gift cards/discounts by submitting a publication using this product:
www.novusbio.com/publications

