

Product Datasheet

Profilin 1 Antibody - BSA Free NBP1-19344

Unit Size: 0.1 ml

Store at 4C short term. Aliquot and store at -20C long term. Avoid freeze-thaw cycles.

www.novusbio.com



technical@novusbio.com

Publications: 1

Protocols, Publications, Related Products, Reviews, Research Tools and Images at:
www.novusbio.com/NBP1-19344

Updated 9/9/2025 v.20.1

Earn rewards for product
reviews and publications.

Submit a publication at www.novusbio.com/publications

Submit a review at www.novusbio.com/reviews/destination/NBP1-19344



NBP1-19344

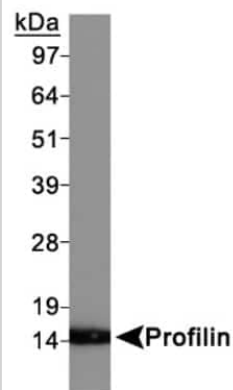
Profilin 1 Antibody - BSA Free

Product Information	
Unit Size	0.1 ml
Concentration	1.17 mg/ml
Storage	Store at 4C short term. Aliquot and store at -20C long term. Avoid freeze-thaw cycles.
Clonality	Polyclonal
Preservative	0.1% Sodium Azide
Isotype	IgG
Purity	Immunogen affinity purified
Buffer	PBS and 30% Glycerol
Target Molecular Weight	14 kDa
Product Description	
Description	Novus Biologicals Rabbit Profilin 1 Antibody - BSA Free (NBP1-19344) is a polyclonal antibody validated for use in IHC, WB and Simple Western. Anti-Profilin 1 Antibody: Cited in 1 publication. All Novus Biologicals antibodies are covered by our 100% guarantee.
Host	Rabbit
Gene ID	5216
Gene Symbol	PFN1
Species	Human, Mouse, Rat, Bovine
Immunogen	Synthetic peptide made to a C-terminal portion of human Profilin 1 (within residues 100-140). [Swiss-Prot# P07737]
Product Application Details	
Applications	Western Blot, Simple Western, Immunohistochemistry-Paraffin, Immunohistochemistry
Recommended Dilutions	Western Blot 0.5 ug/ml, Simple Western 1:200, Immunohistochemistry 1:100, Immunohistochemistry-Paraffin 1:100
Application Notes	<p>This Profilin 1 antibody is useful for Immunohistochemistry on formalin fixed paraffin embedded sections and Western blot, where a band is seen at approx. 14 kDa.</p> <p>In Simple Western only 10 - 15 uL of the recommended dilution is used per data point.</p> <p>See Simple Western Antibody Database for Simple Western validation: Tested in HeLa lysate 0.5 mg/mL, separated by Size, antibody dilution of 1:200, apparent MW was 18 kDa. Separated by Size-Wes, Sally Sue/Peggy Sue.</p>

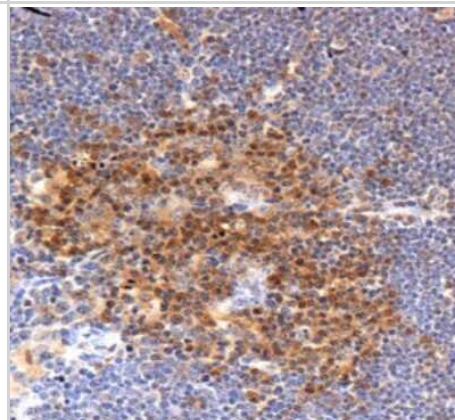


Images

Western Blot: Profilin 1 Antibody [NBP1-19344] - Western Blot on HeLa whole cell extracts.



Immunohistochemistry: Profilin 1 Antibody [NBP1-19344] - Staining of Profilin in mouse thymus.



Simple Western: Profilin 1 Antibody [NBP1-19344] - Simple Western lane view shows a specific band for Profilin 1 in 0.5 mg/ml of HeLa lysate. This experiment was performed under reducing conditions using the 12-230 kDa separation system.



Publications

van Blitterswijk M, Baker MC, Bieniek KF et al. Profilin-1 mutations are rare in patients with amyotrophic lateral sclerosis and frontotemporal dementia. *Amyotroph Lateral Scler Frontotemporal Degener* 2013-05-02 [PMID: 23634771] (IHC-P, Human)

Procedures

Western Blot protocol for Profilin 1 Antibody (NBP1-19344)

Profilin 1 Antibody:

Western Blot Protocol

1. Perform SDS-PAGE (4-12% MES) on samples to be analyzed, loading 30 ug of total protein per lane.
2. Transfer proteins to Nitrocellulose according to the instructions provided by the manufacturer of the transfer apparatus.
3. Rinse membrane with dH₂O and then stain the blot using Ponceau S for 1-2 minutes to access the transfer of proteins onto the nitrocellulose membrane. Rinse the blot in water to remove excess stain and mark the lane locations and locations of molecular weight markers using a pencil.
4. Rinse the blot in TBS for approximately 5 minutes.
5. Block the membrane using 5% NFD_M + 1% BSA in TBS + Tween, 1 hour at RT.
6. Rinse the membrane in dH₂O and then wash the membrane in wash buffer [TBS + 0.1% Tween] 3 times for 10 minutes each.
7. Dilute the rabbit anti-Profilin primary antibody (NBP1-19344) in blocking buffer and incubate 1 hour at room temperature.
8. Rinse the membrane in dH₂O and then wash the membrane in wash buffer [TBS + 0.1% Tween] 3 times for 10 minutes each.
9. Apply the diluted rabbit-IgG HRP-conjugated secondary antibody in blocking buffer (as per manufacturers instructions) and incubate 1 hour at room temperature.
10. Wash the blot in wash buffer [TBS + 0.1% Tween] 3 times for 10 minutes each (this step can be repeated as required to reduce background).
11. Apply the detection reagent of choice in accordance with the manufacturers instructions (Pierce ECL).

****Note:** Tween-20 can be added to the blocking or antibody dilution buffer at a final concentration of 0.05-0.2%, provided it does not interfere with antibody-antigen binding.

Immunohistochemistry-Paraffin protocol for Profilin 1 Antibody (NBP1-19344)

Profilin 1 Antibody:

Immunohistochemistry-paraffin embedded sections

Antigen Unmasking

Bring slides to a boil in 10 mM sodium citrate buffer pH 6.0 then maintain at a sub-boiling temperature for 10 minutes. Cool slides on bench top for 30 minutes.

Staining

1. Wash sections in dH₂O three times for 5 minutes each.
2. Wash section in wash buffer (1X PBS/0.1% Tween-20 (1X PBST)) for 5 minutes.
3. Block each section with 100-400 ul blocking solution (1X PBST, 5% goat serum) for 1 hour at room temperature.
4. Remove blocking solution and add 100-400 ul primary antibody diluted in 1X PBST, 5% goat serum to each section. Incubate overnight at 4C.
5. Remove antibody solution and wash sections in wash buffer three times for 5 minutes each.
6. Add 100-400 ul biotinylated secondary antibody, diluted in 1X PBST, 5% goat serum. Incubate 30 minutes at room temperature.
7. Remove secondary antibody solution and wash sections three times with wash buffer for 5 minutes each.
8. Add 100-400 ul Streptavidin-HRP reagent to each section and incubate for 30 minutes at room temperature.
9. Wash sections three times in wash buffer for 5 minutes each.
10. Add 100-400 ul DAB substrate to each section and monitor staining closely.
11. As soon as the sections develop, immerse slides in dH₂O.
12. Counterstain sections in hematoxylin.
13. Wash sections in dH₂O two times for 5 minutes each.
14. Dehydrate sections.
15. Mount coverslips.





Novus Biologicals USA

10730 E. Briarwood Avenue
Centennial, CO 80112
USA
Phone: 303.730.1950
Toll Free: 1.888.506.6887
Fax: 303.730.1966
nb-customerservice@bio-techne.com

Bio-Techne Canada

21 Canmotor Ave
Toronto, ON M8Z 4E6
Canada
Phone: 905.827.6400
Toll Free: 855.668.8722
Fax: 905.827.6402
canada.inquires@bio-techne.com

Bio-Techne Ltd

19 Barton Lane
Abingdon Science Park
Abingdon, OX14 3NB, United Kingdom
Phone: (44) (0) 1235 529449
Free Phone: 0800 37 34 15
Fax: (44) (0) 1235 533420
info.EMEA@bio-techne.com

General Contact Information

www.novusbio.com
Technical Support: nb-technical@bio-techne.com
Orders: nb-customerservice@bio-techne.com
General: novus@novusbio.com

Products Related to NBP1-19344

NB820-59177	Human Brain Whole Tissue Lysate (Adult Whole Normal)
NBP1-19344PEP	Profilin 1 Antibody Blocking Peptide
NBP2-33376H	Blue Marker Antibody (6F4-F6) [HRP]
HAF008	Goat anti-Rabbit IgG Secondary Antibody [HRP]
NB7160	Goat anti-Rabbit IgG (H+L) Secondary Antibody [HRP]
NBP2-24891	Rabbit IgG Isotype Control

Limitations

This product is for research use only and is not approved for use in humans or in clinical diagnosis. Primary Antibodies are guaranteed for 1 year from date of receipt.

For more information on our 100% guarantee, please visit www.novusbio.com/guarantee

Earn gift cards/discounts by submitting a review: www.novusbio.com/reviews/submit/NBP1-19344

Earn gift cards/discounts by submitting a publication using this product:
www.novusbio.com/publications



