

Product Datasheet

Tie-1 Antibody (6F12) - Azide and BSA Free NBP1-18610

Unit Size: 0.1 mg

Store at 4C short term. Aliquot and store at -20C long term. Avoid freeze-thaw cycles.

www.novusbio.com



technical@novusbio.com

Protocols, Publications, Related Products, Reviews, Research Tools and Images at:
www.novusbio.com/NBP1-18610

Updated 9/9/2025 v.20.1

Earn rewards for product
reviews and publications.

Submit a publication at www.novusbio.com/publications

Submit a review at www.novusbio.com/reviews/destination/NBP1-18610



NBP1-18610

Tie-1 Antibody (6F12) - Azide and BSA Free

Product Information	
Unit Size	0.1 mg
Concentration	LYOPH mg/ml
Storage	Store at 4C short term. Aliquot and store at -20C long term. Avoid freeze-thaw cycles.
Clonality	Monoclonal
Clone	6F12
Preservative	No Preservative
Reconstitution Instructions	Centrifuge vial prior to opening. Reconstitute in sterile water to a concentration of 0.1-1.0 mg/ml. Please note the sample size of this product will be provided in reconstituted liquid form.
Isotype	IgG1
Purity	Protein G purified
Buffer	PBS

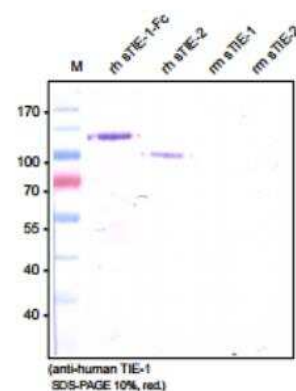
Product Description	
Description	Novus Biologicals Mouse Tie-1 Antibody (6F12) - Azide and BSA Free (NBP1-18610) is a monoclonal antibody validated for use in WB, ELISA and Flow. All Novus Biologicals antibodies are covered by our 100% guarantee.
Host	Mouse
Gene ID	7075
Gene Symbol	TIE1
Species	Human
Specificity/Sensitivity	The monoclonal antibody will detect native human TIE-1 in ELISA experiments and on the surface of different human cell types.
Immunogen	Recombinant human soluble extracellular TIE-1

Product Application Details	
Applications	Western Blot, ELISA, Flow Cytometry, CyTOF-ready
Recommended Dilutions	Western Blot 1 - 2 ug/ml, Flow Cytometry, ELISA 1 - 15 ug/ml, CyTOF-ready
Application Notes	This antibody is Cytof ready.

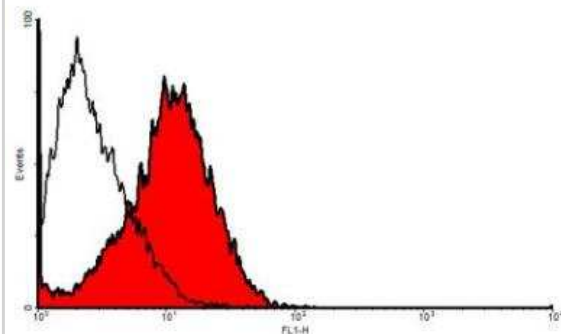


Images

Western Blot: Tie-1 Antibody (Cl. 6F12) [NBP1-18610] - Analysis of recombinant human and mouse soluble TIE receptors using a monoclonal antibody directed against human recombinant soluble TIE-1. There is a weak cross reactivity with human sTIE-2 but no reactivity with mouse sTIE-1 and sTIE-2 visible.



Flow Cytometry: Tie-1 Antibody (Cl. 6F12) [NBP1-18610] - Fig. 1: Flow analysis of TIE-1 expression in primary human umbilical vein endothelial cells (HUVEC).





Novus Biologicals USA

10730 E. Briarwood Avenue
Centennial, CO 80112
USA
Phone: 303.730.1950
Toll Free: 1.888.506.6887
Fax: 303.730.1966
nb-customerservice@bio-techne.com

Bio-Techne Canada

21 Canmotor Ave
Toronto, ON M8Z 4E6
Canada
Phone: 905.827.6400
Toll Free: 855.668.8722
Fax: 905.827.6402
canada.inquires@bio-techne.com

Bio-Techne Ltd

19 Barton Lane
Abingdon Science Park
Abingdon, OX14 3NB, United Kingdom
Phone: (44) (0) 1235 529449
Free Phone: 0800 37 34 15
Fax: (44) (0) 1235 533420
info.EMEA@bio-techne.com

General Contact Information

www.novusbio.com
Technical Support: nb-technical@bio-techne.com
Orders: nb-customerservice@bio-techne.com
General: novus@novusbio.com

Products Related to NBP1-18610

HAF007	Goat anti-Mouse IgG Secondary Antibody [HRP]
NB720-B	Rabbit anti-Mouse IgG (H+L) Secondary Antibody [Biotin]
NBP1-97005-0.5mg	Mouse IgG1 Isotype Control (MG1)
236-EG-200	EGF [Unconjugated]

Limitations

This product is for research use only and is not approved for use in humans or in clinical diagnosis. Primary Antibodies are guaranteed for 1 year from date of receipt.

For more information on our 100% guarantee, please visit www.novusbio.com/guarantee

Earn gift cards/discounts by submitting a review: www.novusbio.com/reviews/submit/NBP1-18610

Earn gift cards/discounts by submitting a publication using this product:
www.novusbio.com/publications

