

Product Datasheet

Meckelin Antibody NBP1-06590

Unit Size: 0.2 ml

Store at 4C short term. Aliquot and store at -20C long term. Avoid freeze-thaw cycles.

www.novusbio.com



technical@novusbio.com

Publications: 2

Protocols, Publications, Related Products, Reviews, Research Tools and Images at:
www.novusbio.com/NBP1-06590

Updated 9/24/2025 v.20.1

Earn rewards for product
reviews and publications.

Submit a publication at www.novusbio.com/publications

Submit a review at www.novusbio.com/reviews/destination/NBP1-06590



NBP1-06590

Meckelin Antibody

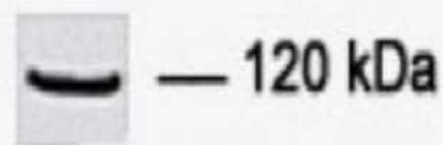
Product Information	
Unit Size	0.2 ml
Concentration	This product is unpurified. The exact concentration of antibody is not quantifiable.
Storage	Store at 4C short term. Aliquot and store at -20C long term. Avoid freeze-thaw cycles.
Clonality	Polyclonal
Preservative	No Preservative
Reconstitution Instructions	Lyophilized powder, reconstituted in distilled water.
Isotype	IgG
Purity	Unpurified
Buffer	Antiserum

Product Description	
Description	Novus Biologicals Rabbit Meckelin Antibody (NBP1-06590) is a polyclonal antibody validated for use in IHC, WB and ICC/IF. Anti-Meckelin Antibody: Cited in 2 publications. All Novus Biologicals antibodies are covered by our 100% guarantee.
Host	Rabbit
Gene ID	91147
Gene Symbol	TMEM67
Species	Human, Rat
Reactivity Notes	Rat reactivity reported in scientific literature (PMID: 23516626). Predicted to cross react with many other species like Guinea pig, Sheep, cat, dog, Porcine due to sequence identity.
Specificity/Sensitivity	Reacts specifically with human 111 kDa protein
Immunogen	Synthetic peptide derived from Cter domain of human Meckelin protein

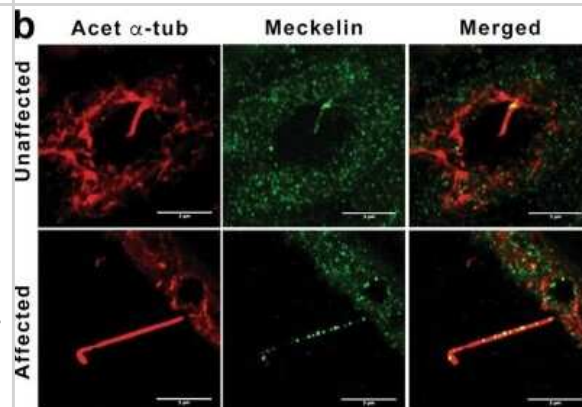
Product Application Details	
Applications	Western Blot, Immunohistochemistry-Paraffin, Immunocytochemistry/Immunofluorescence, Immunohistochemistry, Immunohistochemistry-Frozen
Recommended Dilutions	Western Blot 1:100-1:1000, Immunohistochemistry 1:50-1:200, Immunocytochemistry/ Immunofluorescence Reported in scientific literature (PMID: 23516626), Immunohistochemistry-Paraffin 1:10-1:500, Immunohistochemistry-Frozen Reported in scientific literature (PMID: 23516626)

Images

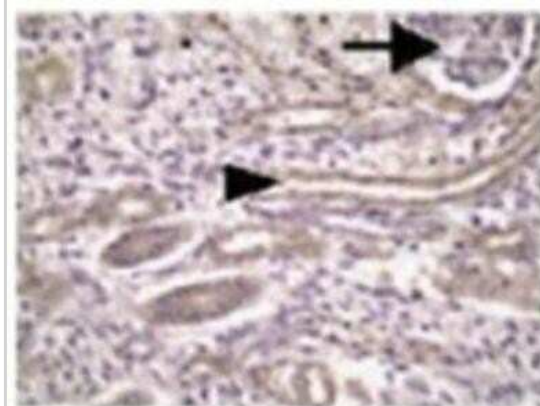
Western Blot: Meckelin Antibody [NBP1-06590] - Immunodetection of Meckelin (120kDa) in whole cell extracts of HEK293 cells.



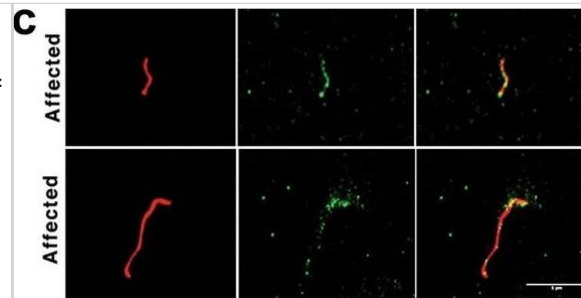
Immunohistochemistry: Meckelin Antibody [NBP1-06590] - Confocal maximum projection of acetylated alpha-tubulin (red) and meckelin (green) labelling in sections from unaffected and affected kidneys. In unaffected kidneys, meckelin was present within the cytoplasm of the epithelial cells and strongly localised to the base of the cilium. In contrast, meckelin was distributed along the length of the ciliary axonemes of affected cyst-lining cells. Meckelin distribution within the cytoplasm of cyst lining cells was similar to observations in unaffected epithelia. Image collected and cropped by CiteAb from the following publication ([//pubmed.ncbi.nlm.nih.gov/28487520/](https://pubmed.ncbi.nlm.nih.gov/28487520/)) licensed under a CC-BY license.



Immunohistochemistry-Paraffin: Meckelin Antibody [NBP1-06590] - Staining of kidney tissue section with Meckelin Antibody (NBP1-06590).



Immunocytochemistry/ Immunofluorescence: Meckelin Antibody [NBP1-06590] - Meckelin expression in unaffected & affected lamb kidney epithelial cells & primary cilia. (a, left) Immunoblot showing expression of meckelin (~100 KDa) in cultured epithelial cells from an unaffected lamb kidney, & an affected lamb kidney. β -actin indicates equivalent protein loading in each lane. (a, right) Quantification of the meckelin band in the immunoblot, normalised to the loading control, shows no significant difference in relative protein expression. (b) Confocal maximum projection of acetylated α -tubulin (red) & meckelin (green) labelling in sections from unaffected & affected kidneys. In unaffected kidneys, meckelin was present within the cytoplasm of the epithelial cells & strongly localised to the base of the cilium. In contrast, meckelin was distributed along the length of the ciliary axonemes of affected cyst-lining cells. Meckelin distribution within the cytoplasm of cyst lining cells was similar to observations in unaffected epithelia (c) Acetylated α -tubulin (red) & meckelin (green) labelling on putative ciliary fragments located in the cyst lumen of affected kidneys (yellow indicates co-localisation in the merged image). Numerous smaller particles contained in the cyst luminal contents were also labeled with meckelin, but were not labeled with acetylated α -tubulin. Scale bars = 5 μ m. Image collected & cropped by CiteAb from the following publication (<https://pubmed.ncbi.nlm.nih.gov/28487520>), licensed under a CC-BY license. Not internally tested by Novus Biologicals.



Publications

Stayner C, Poole C A et al. An ovine hepatorenal fibrocystic model of a Meckel-like syndrome associated with dysmorphic primary cilia and TMEM67 mutations. *Sci Rep* 2017-09-05 [PMID: 28487520] (IF/IHC, Human)

Tiwari S, Hudson S, Gattone VH 2nd et al. Meckelin 3 Is Necessary for Photoreceptor Outer Segment Development in Rat Meckel Syndrome *PLoS One* 2013-01-01 [PMID: 23516626] (ICC/IF, IHC-Fr, Rat)



Novus Biologicals USA

10730 E. Briarwood Avenue
Centennial, CO 80112
USA
Phone: 303.730.1950
Toll Free: 1.888.506.6887
Fax: 303.730.1966
nb-customerservice@bio-techne.com

Bio-Techne Canada

21 Canmotor Ave
Toronto, ON M8Z 4E6
Canada
Phone: 905.827.6400
Toll Free: 855.668.8722
Fax: 905.827.6402
canada.inquires@bio-techne.com

Bio-Techne Ltd

19 Barton Lane
Abingdon Science Park
Abingdon, OX14 3NB, United Kingdom
Phone: (44) (0) 1235 529449
Free Phone: 0800 37 34 15
Fax: (44) (0) 1235 533420
info.EMEA@bio-techne.com

General Contact Information

www.novusbio.com
Technical Support: nb-technical@bio-techne.com
Orders: nb-customerservice@bio-techne.com
General: novus@novusbio.com

Products Related to NBP1-06590

NBP1-06590PEP	Meckelin Antibody Blocking Peptide
NBP2-33376H	Blue Marker Antibody (6F4-F6) [HRP]
HAF008	Goat anti-Rabbit IgG Secondary Antibody [HRP]
NB7160	Goat anti-Rabbit IgG (H+L) Secondary Antibody [HRP]
NBP2-24891	Rabbit IgG Isotype Control

Limitations

This product is for research use only and is not approved for use in humans or in clinical diagnosis. Primary Antibodies are guaranteed for 1 year from date of receipt.

For more information on our 100% guarantee, please visit www.novusbio.com/guarantee

Earn gift cards/discounts by submitting a review: www.novusbio.com/reviews/submit/NBP1-06590

Earn gift cards/discounts by submitting a publication using this product:
www.novusbio.com/publications

