

Product Datasheet

GLUT9 Antibody - BSA Free

NBP1-06565

Unit Size: 0.1 ml

Store at 4C short term. Aliquot and store at -20C long term. Avoid freeze-thaw cycles.

www.novusbio.com



technical@novusbio.com

Protocols, Publications, Related Products, Reviews, Research Tools and Images at:
www.novusbio.com/NBP1-06565

Updated 9/9/2025 v.20.1

Earn rewards for product
reviews and publications.

Submit a publication at www.novusbio.com/publications

Submit a review at www.novusbio.com/reviews/destination/NBP1-06565



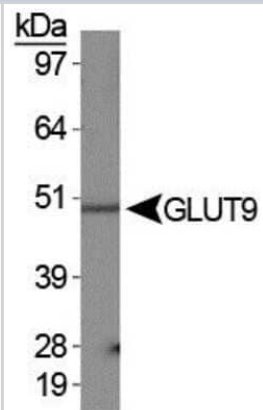
NBP1-06565

GLUT9 Antibody - BSA Free

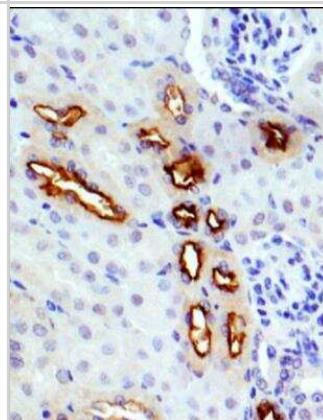
Product Information	
Unit Size	0.1 ml
Concentration	1 mg/ml
Storage	Store at 4C short term. Aliquot and store at -20C long term. Avoid freeze-thaw cycles.
Clonality	Polyclonal
Preservative	0.05% Sodium Azide
Isotype	IgG
Purity	Immunogen affinity purified
Buffer	Tris-Glycine and 0.15M NaCl
Target Molecular Weight	58.7 kDa
Product Description	
Description	Novus Biologicals Rabbit GLUT9 Antibody - BSA Free (NBP1-06565) is a polyclonal antibody validated for use in IHC and WB. All Novus Biologicals antibodies are covered by our 100% guarantee.
Host	Rabbit
Gene ID	56606
Gene Symbol	SLC2A9
Species	Human, Mouse, Primate
Specificity/Sensitivity	This antibody is specific for the human GLUT9 protein Isoform 1 (SLC2A9-L).
Immunogen	Synthetic peptide made to an internal portion of human GLUT9 (within residues 10-60). [Swiss-Prot# Q9NRM0]
Product Application Details	
Applications	Western Blot, Immunohistochemistry-Paraffin, Immunohistochemistry
Recommended Dilutions	Western Blot 0.5 ug/ml, Immunohistochemistry, Immunohistochemistry-Paraffin 1:200 - 1:500
Application Notes	The observed molecular weight of the protein may vary from the listed predicted molecular weight due to post translational modifications, post translation cleavages, relative charges, and other experimental factors.

Images

Western Blot: GLUT9 Antibody [NBP1-06565] - Detection of GLUT9a in human kidney membrane prep.



Immunohistochemistry-Paraffin: GLUT9 Antibody [NBP1-06565] - IHC-P analysis mouse kidney section with GLUT9 antibody at 1:200 dilution. This antibody gave the expected staining of SLC2A9-L isoform in the tubular epithelial cells and the blood vessel endothelium.





Novus Biologicals USA

10730 E. Briarwood Avenue
Centennial, CO 80112
USA
Phone: 303.730.1950
Toll Free: 1.888.506.6887
Fax: 303.730.1966
nb-customerservice@bio-techne.com

Bio-Techne Canada

21 Canmotor Ave
Toronto, ON M8Z 4E6
Canada
Phone: 905.827.6400
Toll Free: 855.668.8722
Fax: 905.827.6402
canada.inquires@bio-techne.com

Bio-Techne Ltd

19 Barton Lane
Abingdon Science Park
Abingdon, OX14 3NB, United Kingdom
Phone: (44) (0) 1235 529449
Free Phone: 0800 37 34 15
Fax: (44) (0) 1235 533420
info.EMEA@bio-techne.com

General Contact Information

www.novusbio.com
Technical Support: nb-technical@bio-techne.com
Orders: nb-customerservice@bio-techne.com
General: novus@novusbio.com

Products Related to NBP1-06565

NB820-59248	Human Placenta Whole Tissue Lysate (Adult Whole Normal)
NBP1-06565PEP	GLUT9 Antibody Blocking Peptide
NBP2-33376H	Blue Marker Antibody (6F4-F6) [HRP]
HAF008	Goat anti-Rabbit IgG Secondary Antibody [HRP]
NB7160	Goat anti-Rabbit IgG (H+L) Secondary Antibody [HRP]
NBP2-24891	Rabbit IgG Isotype Control

Limitations

This product is for research use only and is not approved for use in humans or in clinical diagnosis. Primary Antibodies are guaranteed for 1 year from date of receipt.

For more information on our 100% guarantee, please visit www.novusbio.com/guarantee

Earn gift cards/discounts by submitting a review: www.novusbio.com/reviews/submit/NBP1-06565

Earn gift cards/discounts by submitting a publication using this product:
www.novusbio.com/publications



