

Product Datasheet

NELF-E Antibody - BSA Free

NBP1-05978

Unit Size: 100 ul

Store at 4C. Do not freeze.

www.novusbio.com



technical@novusbio.com

Protocols, Publications, Related Products, Reviews, Research Tools and Images at:
www.novusbio.com/NBP1-05978

Updated 9/9/2025 v.20.1

Earn rewards for product
reviews and publications.

Submit a publication at www.novusbio.com/publications

Submit a review at www.novusbio.com/reviews/destination/NBP1-05978



NBP1-05978

NELF-E Antibody - BSA Free

Product Information	
Unit Size	100 ul
Concentration	1.0 mg/ml
Storage	Store at 4C. Do not freeze.
Clonality	Polyclonal
Preservative	0.09% Sodium Azide
Isotype	IgG
Purity	Immunogen affinity purified
Buffer	Tris-Citrate/Phosphate (pH 7.0 - 8.0)
Target Molecular Weight	43 kDa

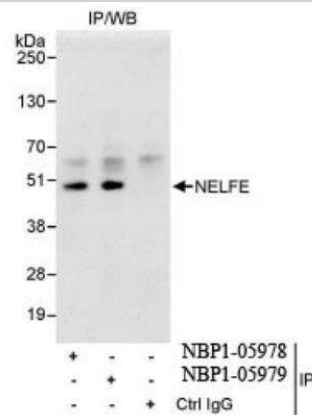
Product Description	
Description	Novus Biologicals Rabbit NELF-E Antibody - BSA Free (NBP1-05978) is a polyclonal antibody validated for use in WB and IP. All Novus Biologicals antibodies are covered by our 100% guarantee.
Host	Rabbit
Gene ID	7936
Gene Symbol	NELFE
Species	Human
Immunogen	The immunogen recognized by this antibody maps to a region between residue 75 and 125 of human negative elongation factor polypeptide E using the numbering given in entry NP_002895.3 (GeneID 7936).

Product Application Details	
Applications	Western Blot, Immunoprecipitation
Recommended Dilutions	Western Blot 1:1000-1:5000, Immunoprecipitation 2-5 ug/mg lysate

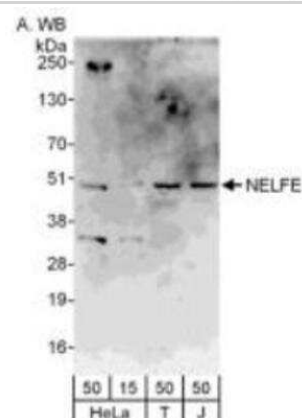


Images

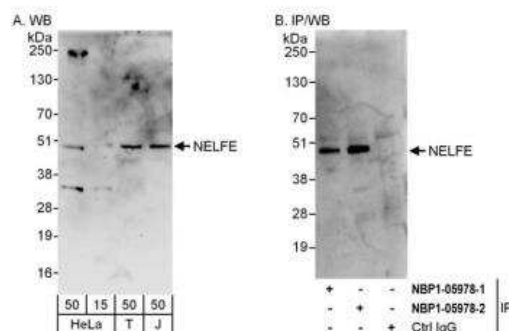
Western Blot: NELF-E Antibody [NBP1-05978] - Whole cell lysate (1 mg for IP, 20% of IP loaded) from HeLa cells. Antibodies: Affinity purified rabbit anti-NELFE antibody used for IP at 3 mcg/mg lysate. NELFE was also immunoprecipitated by rabbit anti-NELFE antibody NBP1-05979, which recognizes a downstream epitope.



Western Blot: NELF-E Antibody [NBP1-05978] - Detection of whole cell lysate from HeLa (15 & 50 ug), 293T (50 ug) and Jurkat (50 ug) cells, with diluted at 0.4 ug/ml.



Immunoprecipitation: NELF-E Antibody [NBP1-05978] - Detection of human NELFE by western blot and immunoprecipitation. Samples: Whole cell lysate from HeLa (15 and 50 ug for WB; 1 mg for IP, 20% of IP loaded), HEK293T (T; 50 ug) and Jurkat (J; 50 ug) cells. Antibodies: Affinity purified rabbit anti-NELFE antibody A301-913A (lot A301-913A-2) used for WB at 0.4 ug/ml (A) and 1 ug/ml (B) and used for IP at 6 ug/mg lysate. NELFE was also immunoprecipitated by a previous lot (lot A301-913A-1) of this antibody. Detection: Chemiluminescence with exposure times of 3 minutes (A) and 30 seconds (B).





Novus Biologicals USA

10730 E. Briarwood Avenue
Centennial, CO 80112
USA
Phone: 303.730.1950
Toll Free: 1.888.506.6887
Fax: 303.730.1966
nb-customerservice@bio-techne.com

Bio-Techne Canada

21 Canmotor Ave
Toronto, ON M8Z 4E6
Canada
Phone: 905.827.6400
Toll Free: 855.668.8722
Fax: 905.827.6402
canada.inquires@bio-techne.com

Bio-Techne Ltd

19 Barton Lane
Abingdon Science Park
Abingdon, OX14 3NB, United Kingdom
Phone: (44) (0) 1235 529449
Free Phone: 0800 37 34 15
Fax: (44) (0) 1235 533420
info.EMEA@bio-techne.com

General Contact Information

www.novusbio.com
Technical Support: nb-technical@bio-techne.com
Orders: nb-customerservice@bio-techne.com
General: novus@novusbio.com

Products Related to NBP1-05978

NBP2-33376H	Blue Marker Antibody (6F4-F6) [HRP]
HAF008	Goat anti-Rabbit IgG Secondary Antibody [HRP]
NB7160	Goat anti-Rabbit IgG (H+L) Secondary Antibody [HRP]
NBP2-24891	Rabbit IgG Isotype Control

Limitations

This product is for research use only and is not approved for use in humans or in clinical diagnosis. Primary Antibodies are guaranteed for 1 year from date of receipt.

For more information on our 100% guarantee, please visit www.novusbio.com/guarantee

Earn gift cards/discounts by submitting a review: www.novusbio.com/reviews/submit/NBP1-05978

Earn gift cards/discounts by submitting a publication using this product:
www.novusbio.com/publications

