

# Product Datasheet

## pan Nuclear Pore Complex Marker Antibody (39C7) NBP1-05390

Unit Size: 0.5 ml

Store at 4C short term. Aliquot and store at -20C long term. Avoid freeze-thaw cycles.

[www.novusbio.com](http://www.novusbio.com)



[technical@novusbio.com](mailto:technical@novusbio.com)

### Publications: 1

Protocols, Publications, Related Products, Reviews, Research Tools and Images at:  
[www.novusbio.com/NBP1-05390](http://www.novusbio.com/NBP1-05390)

Updated 9/9/2025 v.20.1

Earn rewards for product  
reviews and publications.

Submit a publication at [www.novusbio.com/publications](http://www.novusbio.com/publications)

Submit a review at [www.novusbio.com/reviews/destination/NBP1-05390](http://www.novusbio.com/reviews/destination/NBP1-05390)



**NBP1-05390****pan Nuclear Pore Complex Marker Antibody (39C7)**

<b>Product Information</b>	
<b>Unit Size</b>	0.5 ml
<b>Concentration</b>	This product is unpurified. The exact concentration of antibody is not quantifiable.
<b>Storage</b>	Store at 4C short term. Aliquot and store at -20C long term. Avoid freeze-thaw cycles.
<b>Clonality</b>	Monoclonal
<b>Clone</b>	39C7
<b>Preservative</b>	0.035% Sodium Azide
<b>Isotype</b>	IgG1
<b>Purity</b>	Tissue culture supernatant
<b>Buffer</b>	Supplied as concentrated hybridoma cell culture media.
<b>Target Molecular Weight</b>	62 kDa

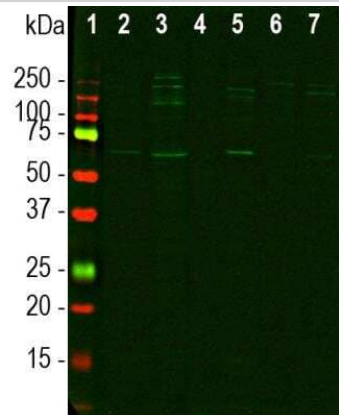
<b>Product Description</b>	
<b>Description</b>	Novus Biologicals Mouse pan Nuclear Pore Complex Marker Antibody (39C7) (NBP1-05390) is a monoclonal antibody validated for use in WB and ICC/IF. Anti-pan Nuclear Pore Complex Marker Antibody: Cited in 1 publication. All Novus Biologicals antibodies are covered by our 100% guarantee.
<b>Host</b>	Mouse
<b>Species</b>	Human, Mouse, Rat, Porcine, Bovine, C. elegans, Chicken, Drosophila, Equine, Yeast
<b>Specificity/Sensitivity</b>	Panspecific
<b>Immunogen</b>	Yeast nuclear preparations

<b>Product Application Details</b>	
<b>Applications</b>	Western Blot, Immunocytochemistry/ Immunofluorescence
<b>Recommended Dilutions</b>	Western Blot 1:100, Immunocytochemistry/ Immunofluorescence 1:50-1:500
<b>Application Notes</b>	This pan Nuclear Pore Complex Marker (39C7) antibody is useful for Western Blot and Immunocytochemistry/Immunofluorescence. For ICC/IF the recommended dilutions are 1:100 to 1:500 (yeast cells) and 1:50 to 1:100 (mammalian cells).

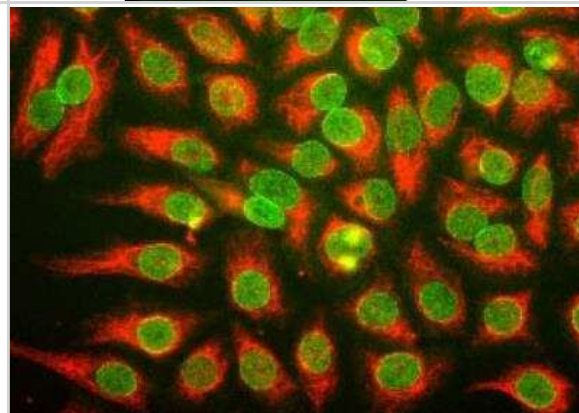


## Images

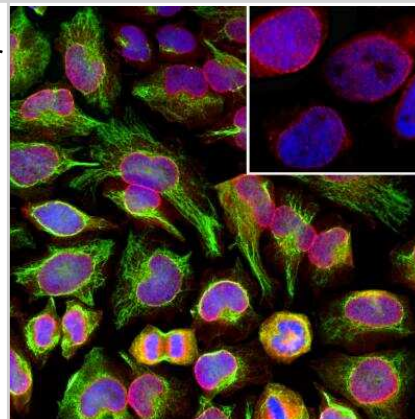
Western Blot: pan Nuclear Pore Complex Marker Antibody (39C7) [NBP1-05390] - Analysis of different cell lysates, cytosol or nuclear enriched fractions using pan-specific mouse mAb to the nuclear pore complex (NPC), NBP1-05390, dilution 1:100 in green: [1] protein standard (red), [2] HEK293 cytosol, [3] HEK293 nuclear, [4] NIH-3T3 cytosol, [5] NIH-3T3 nuclear, [6] HeLa cytosol, and [7] HeLa nuclear fraction lysate. The band at about 68kDa represents a currently unidentified NPC protein which is detected predominantly in the nuclear enriched fractions of all cell lines.



Immunocytochemistry/Immunofluorescence: pan Nuclear Pore Complex Marker Antibody (39C7) [NBP1-05390] - HeLa cells were stained with monoclonal antibody NBP1-05390, which binds to a nuclear pore complex antigen, and chicken antibody to vimentin NBP1-05425.



pan Nuclear Pore Complex Marker Antibody (39C7) [NBP1-05390] - Analysis of HeLa cells stained with panspecificmouse mAb to the nuclear pore complex (NPC), NBP1-05390, dilution 1:100 in red, and costained with chicken pAb to vimentin, dilution 1:10,000, in green. The blue is DAPI staining of nuclear DNA. The NBP1-05390 antibody reveals strong granular staining of the nuclei corresponding to the NPC, while the vimentin antibody specifically labels intermediate filaments in these cells.



## Publications

Stokum JA, Shim B, Huang W et al. A large portion of the astrocyte proteome is dedicated to perivascular endfeet, including critical components of the electron transport chain *Journal of cerebral blood flow and metabolism* : official journal of the International Society of Cerebral Blood Flow and Metabolism 2021-04-04 [PMID: 33818185]



### **Novus Biologicals USA**

10730 E. Briarwood Avenue  
Centennial, CO 80112  
USA  
Phone: 303.730.1950  
Toll Free: 1.888.506.6887  
Fax: 303.730.1966  
nb-customerservice@bio-techne.com

### **Bio-Techne Canada**

21 Canmotor Ave  
Toronto, ON M8Z 4E6  
Canada  
Phone: 905.827.6400  
Toll Free: 855.668.8722  
Fax: 905.827.6402  
canada.inquires@bio-techne.com

### **Bio-Techne Ltd**

19 Barton Lane  
Abingdon Science Park  
Abingdon, OX14 3NB, United Kingdom  
Phone: (44) (0) 1235 529449  
Free Phone: 0800 37 34 15  
Fax: (44) (0) 1235 533420  
info.EMEA@bio-techne.com

### **General Contact Information**

www.novusbio.com  
Technical Support: nb-technical@bio-techne.com  
Orders: nb-customerservice@bio-techne.com  
General: novus@novusbio.com

### **Products Related to NBP1-05390**

---

NBP2-33376H	Blue Marker Antibody (6F4-F6) [HRP]
HAF007	Goat anti-Mouse IgG Secondary Antibody [HRP]
NB7539	Goat anti-Mouse IgG (H+L) Secondary Antibody [HRP]
NBP1-97005-0.5mg	Mouse IgG1 Isotype Control (MG1)

---

### **Limitations**

This product is for research use only and is not approved for use in humans or in clinical diagnosis. Primary Antibodies are guaranteed for 1 year from date of receipt.

For more information on our 100% guarantee, please visit [www.novusbio.com/guarantee](http://www.novusbio.com/guarantee)

Earn gift cards/discounts by submitting a review: [www.novusbio.com/reviews/submit/NBP1-05390](http://www.novusbio.com/reviews/submit/NBP1-05390)

Earn gift cards/discounts by submitting a publication using this product:  
[www.novusbio.com/publications](http://www.novusbio.com/publications)

