

Product Datasheet

ISG15 Activating Enzyme/UBE1L Overexpression Lysate NBL1-17502

Unit Size: 0.1 mg

Store at -80C. Avoid freeze-thaw cycles.

www.novusbio.com



technical@novusbio.com

Publications: 1

Protocols, Publications, Related Products, Reviews, Research Tools and Images at:
www.novusbio.com/NBL1-17502

Updated 11/9/2024 v.20.1

Earn rewards for product
reviews and publications.

Submit a publication at www.novusbio.com/publications

Submit a review at www.novusbio.com/reviews/destination/NBL1-17502



NBL1-17502**ISG15 Activating Enzyme/UBE1L Overexpression Lysate**

| Product Information | |
|------------------------------------|--|
| Unit Size | 0.1 mg |
| Concentration | The exact concentration of the protein of interest cannot be determined for overexpression lysates. Please contact technical support for more information. |
| Storage | Store at -80C. Avoid freeze-thaw cycles. |
| Buffer | RIPA buffer |
| Target Molecular Weight | 111.5 kDa |
| Product Description | |
| Description | <p>ISG15 Activating Enzyme/UBE1L Transient Overexpression Lysate</p> <p>Expression Host: HEK293T</p> <p>Plasmid: RC202883</p> <p>Accession#: NM_003335</p> <p>Protein Tag: C-MYC/DDK</p> <p>You will receive 1 vial of lysate (100ug), 1 vial of empty vector negative control (100ug), and 1 vial of 2xSDS sample buffer (250ul). Each vial of cell lysate contains 100ug of total protein (at 1 mg/ml). The 2xSDS Sample Buffer consists of 4% SDS, 125mM Tris-HCl pH6.8, 10% Glycerol, 0.002% Bromophenol blue, 100mM DTT.</p> |
| Gene ID | 7318 |
| Gene Symbol | UBA7 |
| Species | Human |
| Notes | HEK293T cells in 10-cm dishes were transiently transfected with a non-lipid polymer transfection reagent specially designed and manufactured for large volume DNA transfection. Transfected cells were cultured for 48 hours before collection. The cells were lysed in modified RIPA buffer (25 mM Tris-HCl (pH 7.6), 150 mM NaCl, 1% NP-40, 1 mM EDTA, 1X Proteinase inhibitor cocktail mix, 1 mM PMSF and 1 mM Na3PO4, and then centrifuged to clarify the lysate. Protein concentration was measured by BCA protein assay kit. |
| Lysate Type | Overexpression |
| Product Application Details | |
| Applications | Western Blot |
| Recommended Dilutions | Western Blot |

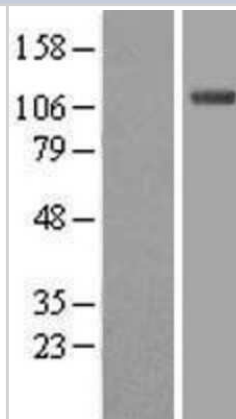
Application Notes

This product is intended for use as a positive control in Western Blot. Overexpression of the target protein was confirmed using an antibody to DDK (FLAG) epitope tag ([NBP1-71705](#)) present on the protein construct.

Each vial of cell lysate contains 100ug of total protein which should be sufficient for 20-50 reactions. Depending on over-expression level, antibody affinity and detection system, some lysates can go as low as 0.1 ug per load. We recommend starting with 5ug of cell lysate. Add an equal amount of cell lysate and 2X SDS Sample buffer and boil the SDS samples for 10 minutes before loading.

Images

Western Blot: ISG15 Activating Enzyme/UBE1L Overexpression Lysate [NBL1-17502] - Ube1L Overexpression Lysate (Adult Normal) [NBL1-17502] Left lane: Empty vector transfected control cell lysate (HEK293 cell lysate); Right lane: Over-expression Lysate for Ube1L.

**Publications**

Carrillo-VAzquez DA, JardOn-Valadez E, Torres-Ruiz J et al. Conformational changes in myeloperoxidase induced by ubiquitin and NETs containing free ISG15 from systemic lupus erythematosus patients promote a pro-inflammatory cytokine response in CD4+ T cells J Transl Med 2020-11-11 [PMID: 33176801] (WB, Human)



Novus Biologicals USA

10730 E. Briarwood Avenue
Centennial, CO 80112
USA
Phone: 303.730.1950
Toll Free: 1.888.506.6887
Fax: 303.730.1966
nb-customerservice@bio-techne.com

Bio-Techne Canada

21 Canmotor Ave
Toronto, ON M8Z 4E6
Canada
Phone: 905.827.6400
Toll Free: 855.668.8722
Fax: 905.827.6402
canada.inquires@bio-techne.com

Bio-Techne Ltd

19 Barton Lane
Abingdon Science Park
Abingdon, OX14 3NB, United Kingdom
Phone: (44) (0) 1235 529449
Free Phone: 0800 37 34 15
Fax: (44) (0) 1235 533420
info.EMEA@bio-techne.com

General Contact Information

www.novusbio.com
Technical Support: nb-technical@bio-techne.com
Orders: nb-customerservice@bio-techne.com
General: novus@novusbio.com

Products Related to NBL1-17502

| | |
|---------------|---|
| NBP2-55032PEP | ISG15 Activating Enzyme/UBE1L Recombinant Protein Antigen |
| 210-TA-005 | TNF-alpha [Unconjugated] |
| NBP3-33075 | ISG15 Activating Enzyme/UBE1L Antibody (JE50-55) |
| DIP100 | CXCL10/IP-10/CRG-2 [HRP] |

Limitations

This product is for research use only and is not approved for use in humans or in clinical diagnosis. Lysates are guaranteed for 6 months from date of receipt.

For more information on our 100% guarantee, please visit www.novusbio.com/guarantee

Earn gift cards/discounts by submitting a review: www.novusbio.com/reviews/submit/NBL1-17502

Earn gift cards/discounts by submitting a publication using this product:
www.novusbio.com/publications

