

Product Datasheet

Ovalbumin Antibody - BSA Free NB600-922-0.1mg

Unit Size: 0.1 mg

Store at 4C short term. Aliquot and store at -20C long term. Avoid freeze-thaw cycles.

www.novusbio.com



technical@novusbio.com

Publications: 10

Protocols, Publications, Related Products, Reviews, Research Tools and Images at:
www.novusbio.com/NB600-922

Updated 8/21/2025 v.20.1

Earn rewards for product
reviews and publications.

Submit a publication at www.novusbio.com/publications

Submit a review at www.novusbio.com/reviews/destination/NB600-922



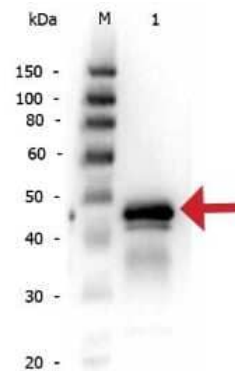
NB600-922-0.1mg

Ovalbumin Antibody - BSA Free

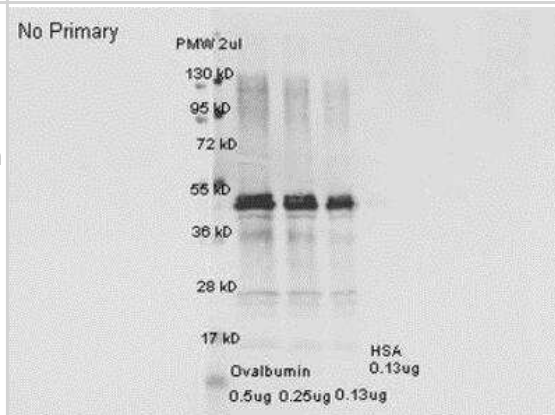
Product Information	
Unit Size	0.1 mg
Concentration	Please see the vial label for concentration. If unlisted please contact technical services.
Storage	Store at 4C short term. Aliquot and store at -20C long term. Avoid freeze-thaw cycles.
Clonality	Polyclonal
Preservative	0.01% Sodium Azide
Isotype	IgG
Purity	Multi-step
Buffer	0.02 M Potassium Phosphate, 0.15 M Sodium Chloride, pH 7.2
Product Description	
Description	<p>Rabbit Anti-Ovalbumin is an IgG fraction antibody purified from monospecific antiserum by a multi-step process which includes delipidation, salt fractionation and ion exchange chromatography followed by extensive dialysis against the buffer stated above. Assay by immunoelectrophoresis resulted in a single precipitin arc against anti-Rabbit Serum as well as purified and partially purified Ovalbumin [Hen Egg White]</p> <p>Store vial at -20C prior to opening. Aliquot contents and freeze at -20C or below for extended storage. Avoid cycles of freezing and thawing. Centrifuge product if not completely clear after standing at room temperature. This product is stable for several weeks at 4C as an undiluted liquid. Dilute only prior to immediate use.</p>
Host	Rabbit
Gene ID	396058
Gene Symbol	OVAL
Species	Mouse, Chicken
Reactivity Notes	Mouse reactivity reported from a verified customer review. Cross reactivity against Ovalbumin from other sources is unknown.
Immunogen	Ovalbumin [Hen Egg White] (Uniprot: P01012)
Product Application Details	
Applications	Western Blot, ELISA, Immunohistochemistry, Single Cell Western
Recommended Dilutions	Western Blot 1:500-1:2000, ELISA 1:5000-1:20000, Immunohistochemistry, Single Cell Western 1:10
Application Notes	SCW is validated using murine sarcoma cells

Images

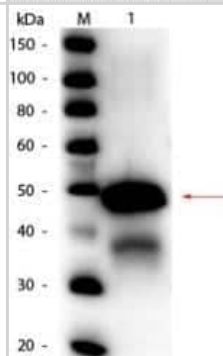
Western Blot: Ovalbumin Antibody [NB600-922] - Lane 1: Reduced Ovalbumin. Load: 50 ng. Primary antibody: Ovalbumin antibody at 1:1,000 overnight at 4C. Secondary antibody: Peroxidase rabbit secondary antibody at 1:40,000 for 30 min at RT. Block: Blocking Buffer for Fluorescent Western Blotting for 30 min at RT. Predicted/Observed size: 45 kDa, 45 kDa for Ovalbumin.



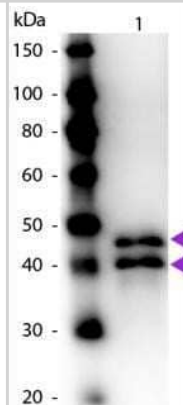
Western Blot: Ovalbumin Antibody [NB600-922] - Western blot detection of Ovalbumin from hen egg white using NB600-922 at 1:10,000. The blot was blocked ON at 4 degrees C in 3% BSA. The secondary antibody used was a DyLight 649 Conjugated Goat anti-rabbit IgG (H&L) diluted 1:20,000 and incubated 1 hr RT in blocking buffer for fluorescent western blotting.



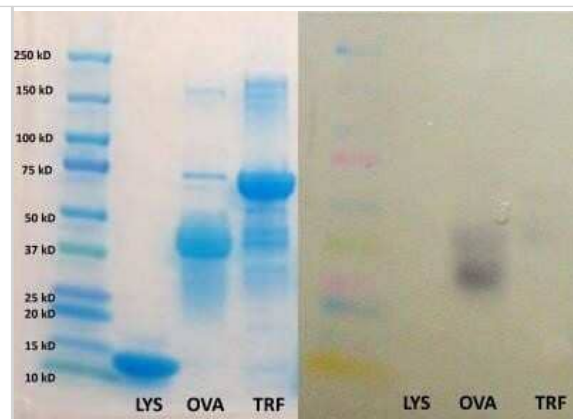
Western Blot: Ovalbumin Antibody [NB600-922] - Analysis using the HRP conjugate of NB600-922. Detection of Lane 1: Ovalbumin (Hen Egg). Load: 50 ng per lane. Dilution: 1:1,000. Predicted/Observed size: 43 kDa, 43 kDa for Ovalbumin. Other band(s): Ovalbumin splice variants and isoforms.



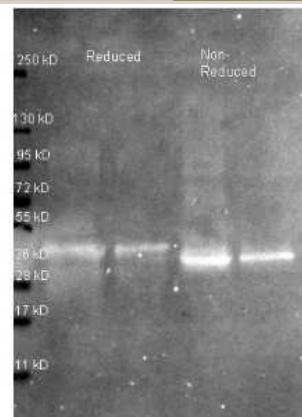
Western Blot: Ovalbumin Antibody [NB600-922] - Analysis using the HRP conjugate of NB600-922. Detection of Lane 1: Ovalbumin. Load: 50 ng per lane. Dilution: 1:1,000. Predicted/Observed size: 43 kDa, 43 kDa for Ovalbumin. Other band(s): Ovalbumin splice variants and isoforms.



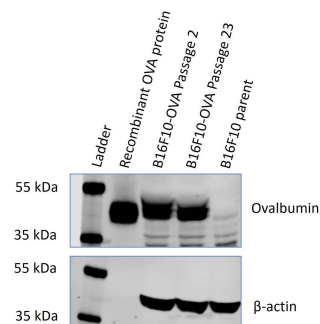
Western Blot: Ovalbumin Antibody [NB600-922] - Analysis using the HRP conjugate of NB600-922. Detection of purified egg white proteins (lysozyme, ovalbumin, ovomucoprotein). Image from verified customer review.



Western Blot: Ovalbumin Antibody [NB600-922] - Lane 1: 1 ug Ovalbumin protein reduced. Lane 2: 0.25 ug Ovalbumin protein reduced. Lane 3: 1 ug Ovalbumin protein non-reduced. Lane 4: 0.25 ug Ovalbumin protein non-reduced. Primary antibody: Ovalbumin antibody at 1:5000 for overnight at 4C. Secondary antibody: Atto 425 conjugated goat anti rabbit secondary antibody at 1:10,000 for 1.5 hr at RT. Block: incubated with blocking buffer for ovalbumin. Other band(s): none.



Detection of recombinant OVA protein and OVA protein overexpressed in a B16F10-OVA cell line by Western blot using the rabbit polyclonal ovalbumin antibody (NB600-922) at 1:500. Image from a verified customer review.



Publications

Amaya L, Grigoryan L, Li Z et al. Circular RNA vaccine induces potent T cell responses Proceedings of the National Academy of Sciences of the United States of America 2023-05-16 [PMID: 37155869] (WB, Human)

Kim Y, Shim J, Park J et al. Sequential verification of exogenous protein production in OVA gene-targeted chicken bioreactors Poultry Science 2023-01-01 [PMID: 36335737] (IHC-P, WB, Chicken)

Leary N, Walser S, He Y et al. Melanoma-derived extracellular vesicles mediate lymphatic remodelling and impair tumour immunity in draining lymph nodes Journal of extracellular vesicles 2022-02-01 [PMID: 35188342] (WB, Chicken)

Jin H, Wu Y, Bi S et al. Higher immune response induced by vaccination in Houhai acupoint relates to the lymphatic drainage of the injection site Res Vet Sci 2020-04-01 [PMID: 32224352] (WB)

Kaplan A, Joseph K Kinin formation in C1 inhibitor deficiency. J Allergy Clin Immunol 2010-01-06 [PMID: 20381848] (ELISA, Virus)

Gogesch P, Schulke S, Scheurer S et al. Modular MLV-VLPs co-displaying ovalbumin peptides and GM-CSF effectively induce expansion of CD11b+ APC and antigen-specific T cell responses in vitro Mol. Immunol. 2018-05-28 [PMID: 29852456] (WB)

Shimazaki Y, Takahashi A. Antibacterial activity of lysozyme-binding proteins from chicken egg white J. Microbiol. Methods 2018-10-03 [PMID: 30291881] (WB, Chicken)

Wang J, Zhang Y, Wei J et al. Lewis X oligosaccharides targeting to DC-SIGN enhanced antigen-specific immune response Immunology 2007-06-01 [PMID: 17371544]

Details:

This citation used the HRP version of this antibody.

Uhlig KM, Schulke S, Scheuplein VA et al. Lentiviral protein transfer vectors are an efficient vaccine-platform inducing strong antigen-specific cytotoxic T cell response J. Virol. 2015-06-17 [PMID: 26085166] (WB, Chicken)

Li JT, Rank MA, Squillace DL, Kita H. Ovalbumin content of influenza vaccines J Allergy Clin Immunol 2010-06-01 [PMID: 20451987] (ELISA, Virus)





Novus Biologicals USA

10730 E. Briarwood Avenue
Centennial, CO 80112
USA
Phone: 303.730.1950
Toll Free: 1.888.506.6887
Fax: 303.730.1966
nb-customerservice@bio-techne.com

Bio-Techne Canada

21 Canmotor Ave
Toronto, ON M8Z 4E6
Canada
Phone: 905.827.6400
Toll Free: 855.668.8722
Fax: 905.827.6402
canada.inquires@bio-techne.com

Bio-Techne Ltd

19 Barton Lane
Abingdon Science Park
Abingdon, OX14 3NB, United Kingdom
Phone: (44) (0) 1235 529449
Free Phone: 0800 37 34 15
Fax: (44) (0) 1235 533420
info.EMEA@bio-techne.com

General Contact Information

www.novusbio.com
Technical Support: nb-technical@bio-techne.com
Orders: nb-customerservice@bio-techne.com
General: novus@novusbio.com

Products Related to NB600-922-0.1mg

HAF008	Goat anti-Rabbit IgG Secondary Antibody [HRP]
NB7160	Goat anti-Rabbit IgG (H+L) Secondary Antibody [HRP]
NBP2-24891	Rabbit IgG Isotype Control
P5241	Ovalbumin Native Protein

Limitations

This product is for research use only and is not approved for use in humans or in clinical diagnosis. Primary Antibodies are guaranteed for 1 year from date of receipt.

For more information on our 100% guarantee, please visit www.novusbio.com/guarantee

Earn gift cards/discounts by submitting a review: www.novusbio.com/reviews/submit/NB600-922

Earn gift cards/discounts by submitting a publication using this product:
www.novusbio.com/publications

