

# Product Datasheet

## EDNRA/Endothelin R Type A Antibody - Azide and BSA Free NB600-836

Unit Size: 0.125 mg

Aliquot and store at -20C or -80C. Avoid freeze-thaw cycles.

[www.novusbio.com](http://www.novusbio.com)



[technical@novusbio.com](mailto:technical@novusbio.com)

**Reviews: 1 Publications: 4**

Protocols, Publications, Related Products, Reviews, Research Tools and Images at:  
[www.novusbio.com/NB600-836](http://www.novusbio.com/NB600-836)

Updated 9/9/2025 v.20.1

Earn rewards for product reviews and publications.

Submit a publication at [www.novusbio.com/publications](http://www.novusbio.com/publications)

Submit a review at [www.novusbio.com/reviews/destination/NB600-836](http://www.novusbio.com/reviews/destination/NB600-836)



**NB600-836****EDNRA/Endothelin R Type A Antibody - Azide and BSA Free**

<b>Product Information</b>	
<b>Unit Size</b>	0.125 mg
<b>Concentration</b>	Please see the vial label for concentration. If unlisted please contact technical services.
<b>Storage</b>	Aliquot and store at -20C or -80C. Avoid freeze-thaw cycles.
<b>Clonality</b>	Polyclonal
<b>Preservative</b>	No Preservative
<b>Isotype</b>	IgG
<b>Purity</b>	Protein G purified
<b>Buffer</b>	PBS

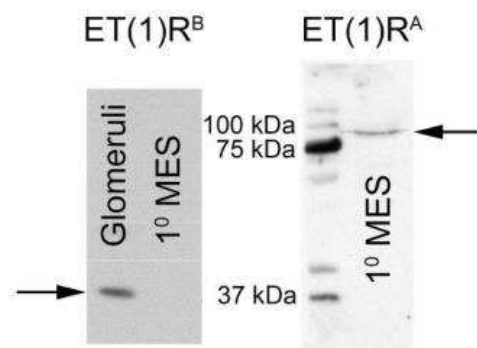
<b>Product Description</b>	
<b>Description</b>	Novus Biologicals Sheep EDNRA/Endothelin R Type A Antibody - Azide and BSA Free (NB600-836) is a polyclonal antibody validated for use in IHC, WB, ICC/IF and IP. Anti-EDNRA/Endothelin R Type A Antibody: Cited in 4 publications. All Novus Biologicals antibodies are covered by our 100% guarantee.
<b>Host</b>	Sheep
<b>Gene ID</b>	1909
<b>Gene Symbol</b>	EDNRA
<b>Species</b>	Mouse
<b>Specificity/Sensitivity</b>	This recognizes epitopes on the cytoplasmic side of the receptor and will not block the binding of endothelins. Therefore, the cell membrane must be permeable to the.
<b>Immunogen</b>	Synthetic peptide corresponding to amino acids 410-422 (QEQNHTERSSHK) of Rat Endothelin A Receptor, conjugated to KLH.

<b>Product Application Details</b>	
<b>Applications</b>	Western Blot, Immunohistochemistry-Paraffin, Immunocytochemistry/ Immunofluorescence, Immunohistochemistry, Immunoprecipitation
<b>Recommended Dilutions</b>	Western Blot 1:100-1:2000, Immunohistochemistry 10-20 ug/ml, Immunocytochemistry/ Immunofluorescence 1:10-1:500, Immunoprecipitation 20-40 ug/ml, Immunohistochemistry-Paraffin 10-20 ug/ml
<b>Application Notes</b>	EDNRA/Endothelin R Type A antibody validated for ICC/IF, WB from verified customer reviews.



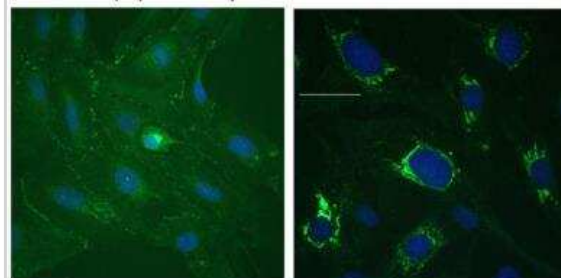
## Images

Western Blot: EDNRA/Endothelin R Type A Antibody [NB600-836] - EDN 1 Receptor A in 1 MES Cells. Western Provided by verified customer review.

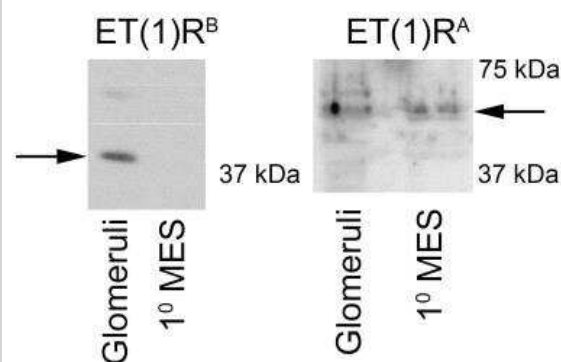


Immunocytochemistry/Immunofluorescence: EDNRA/Endothelin R Type A Antibody [NB600-836] - EDN 1 Receptor A in 1 MES Cells. Immunofluorescent staining image provided by verified customer review.

EDN (1) Receptor A in 1<sup>0</sup> MES Cells



Western Blot: EDNRA/Endothelin R Type A Antibody [NB600-836] - ET-1 A & B Receptor Western provided by verified customer review.



## Publications

Dufek Brianna, Meehan Daniel T, Delimont Duane et al. Endothelin A receptor activation on mesangial cells initiates Alport glomerular disease. *Kidney International* 2016-01-01 [PMID: 27165837] (ICC/IF, Mouse)

Meehan DT, Delimont D, Dufek B et al. Endothelin-1 mediated induction of extracellular matrix genes in strial marginal cells underlies strial pathology in Alport mice. *Hear. Res.* 2016-08-21 [PMID: 27553900] (ICC/IF, Mouse)

Talati M, West J, Blackwell TR et al. BMPR2 mutation alters the lung macrophage endothelin-1 cascade in a mouse model and patients with heritable pulmonary artery hypertension *Am J Physiol Lung Cell Mol Physiol* 2010-09-01 [PMID: 20562228] (IF/IHC, ICC/IF, Mouse)

Keator CS, Mah K, Ohm L, Slayden OD. Estrogen and progesterone regulate expression of the endothelins in the rhesus macaque endometrium. *Hum Reprod.* 2011-04-19 [PMID: 21505040]



### **Novus Biologicals USA**

10730 E. Briarwood Avenue  
Centennial, CO 80112  
USA  
Phone: 303.730.1950  
Toll Free: 1.888.506.6887  
Fax: 303.730.1966  
nb-customerservice@bio-techne.com

### **Bio-Techne Canada**

21 Canmotor Ave  
Toronto, ON M8Z 4E6  
Canada  
Phone: 905.827.6400  
Toll Free: 855.668.8722  
Fax: 905.827.6402  
canada.inquires@bio-techne.com

### **Bio-Techne Ltd**

19 Barton Lane  
Abingdon Science Park  
Abingdon, OX14 3NB, United Kingdom  
Phone: (44) (0) 1235 529449  
Free Phone: 0800 37 34 15  
Fax: (44) (0) 1235 533420  
info.EMEA@bio-techne.com

### **General Contact Information**

www.novusbio.com  
Technical Support: nb-technical@bio-techne.com  
Orders: nb-customerservice@bio-techne.com  
General: novus@novusbio.com

### **Products Related to NB600-836**

---

NBP2-33376H	Blue Marker Antibody (6F4-F6) [HRP]
HAF016	Donkey anti-Sheep IgG Secondary Antibody [HRP]
NL010	Donkey anti-Sheep IgG Secondary Antibody [NL557]
NBP1-97055-10mg	Sheep IgG Isotype Control

---

### **Limitations**

This product is for research use only and is not approved for use in humans or in clinical diagnosis. Primary Antibodies are guaranteed for 1 year from date of receipt.

For more information on our 100% guarantee, please visit [www.novusbio.com/guarantee](http://www.novusbio.com/guarantee)

Earn gift cards/discounts by submitting a review: [www.novusbio.com/reviews/submit/NB600-836](http://www.novusbio.com/reviews/submit/NB600-836)

Earn gift cards/discounts by submitting a publication using this product:  
[www.novusbio.com/publications](http://www.novusbio.com/publications)

