

Product Datasheet

OASIS/CREB3L1 Antibody NB600-799

Unit Size: 0.1 mg

Store at -20C. Avoid freeze-thaw cycles.

www.novusbio.com



technical@novusbio.com

Publications: 1

Protocols, Publications, Related Products, Reviews, Research Tools and Images at:
www.novusbio.com/NB600-799

Updated 9/9/2025 v.20.1

Earn rewards for product
reviews and publications.

Submit a publication at www.novusbio.com/publications

Submit a review at www.novusbio.com/reviews/destination/NB600-799



NB600-799

OASIS/CREB3L1 Antibody

Product Information	
Unit Size	0.1 mg
Concentration	0.5 mg/ml
Storage	Store at -20C. Avoid freeze-thaw cycles.
Clonality	Polyclonal
Preservative	0.02% Sodium Azide
Isotype	IgG
Purity	Immunogen affinity purified
Buffer	Tris saline (20 mM Tris pH 7.3, 150 mM NaCl), 0.5% BSA

Product Description	
Description	Novus Biologicals Goat OASIS/CREB3L1 Antibody (NB600-799) is a polyclonal antibody validated for use in IHC, WB and ELISA. Anti-OASIS/CREB3L1 Antibody: Cited in 1 publication. All Novus Biologicals antibodies are covered by our 100% guarantee.
Host	Goat
Gene ID	90993
Gene Symbol	CREB3L1
Species	Human
Reactivity Notes	Predicted cross-reactivity based on sequence identity: Mouse, Rat.
Immunogen	Peptide with sequence C-DFSHSKEWFHDRD corresponding to C-Terminus according to NP_443086.1.

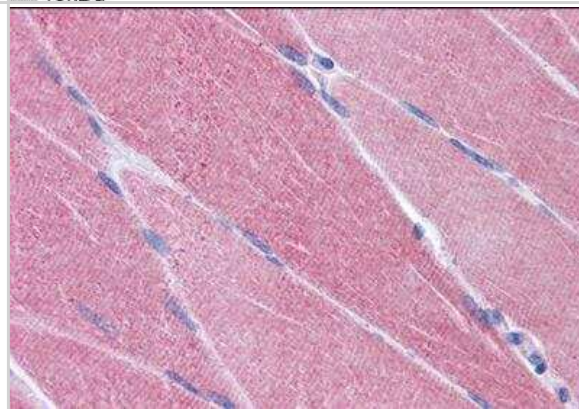
Product Application Details	
Applications	Western Blot, Immunohistochemistry-Paraffin, Immunohistochemistry, Peptide ELISA
Recommended Dilutions	Western Blot 1 - 3 ug/ml, Immunohistochemistry, Immunohistochemistry-Paraffin 3.75 ug/ml, Peptide ELISA Detection limit 1:32000
Application Notes	WB: Approx. 60 kDa band observed in lysates of A549 (calculated MW of 57.0 kDa band according to NP_443086.1). IHC: Paraffin embedded Human Skeletal Muscle and Liver.

Images

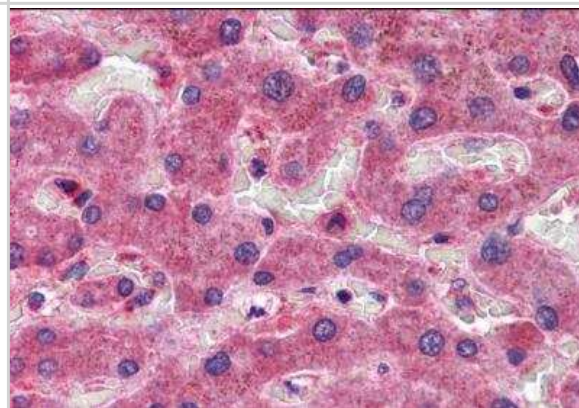
Western Blot: OASIS/CREB3L1 Antibody [NB600-799] - CREB3L1 Antibody [NB600-799] - Approx 60kDa band observed in lysates of cell line A549 (calculated MW of 57.0kDa according to NP_443086.1).

250kDa
150kDa
100kDa
75kDa
50kDa
37kDa
25kDa
20kDa
15kDa

Immunohistochemistry-Paraffin: OASIS/CREB3L1 Antibody [NB600-799] - staining of paraffin embedded Human Skeletal Muscle. Steamed antigen retrieval with citrate buffer pH 6, AP-staining.



Immunohistochemistry-Paraffin: OASIS/CREB3L1 Antibody [NB600-799] - staining of paraffin embedded Human Liver. Steamed antigen retrieval with citrate buffer pH 6, AP-staining.



Publications

Kondo S, Murakami T, Tatsumi K et al. OASIS, a CREB/ATF-family member, modulates UPR signalling in astrocytes. Nat Cell Biol 2005-02-01 [PMID: 15665855]



Novus Biologicals USA

10730 E. Briarwood Avenue
Centennial, CO 80112
USA
Phone: 303.730.1950
Toll Free: 1.888.506.6887
Fax: 303.730.1966
nb-customerservice@bio-techne.com

Bio-Techne Canada

21 Canmotor Ave
Toronto, ON M8Z 4E6
Canada
Phone: 905.827.6400
Toll Free: 855.668.8722
Fax: 905.827.6402
canada.inquires@bio-techne.com

Bio-Techne Ltd

19 Barton Lane
Abingdon Science Park
Abingdon, OX14 3NB, United Kingdom
Phone: (44) (0) 1235 529449
Free Phone: 0800 37 34 15
Fax: (44) (0) 1235 533420
info.EMEA@bio-techne.com

General Contact Information

www.novusbio.com
Technical Support: nb-technical@bio-techne.com
Orders: nb-customerservice@bio-techne.com
General: novus@novusbio.com

Products Related to NB600-799

NBL1-09464	OASIS/CREB3L1 Overexpression Lysate
NBP2-33376H	Blue Marker Antibody (6F4-F6) [HRP]
HAF017	Rabbit anti-Goat IgG Secondary Antibody [HRP (Horseradish Peroxidase)]
HAF109	Donkey anti-Goat IgG Secondary Antibody [HRP (Horseradish Peroxidase)]
NB410-28088-1mg	Goat IgG Isotype Control

Limitations

This product is for research use only and is not approved for use in humans or in clinical diagnosis. Primary Antibodies are guaranteed for 1 year from date of receipt.

For more information on our 100% guarantee, please visit www.novusbio.com/guarantee

Earn gift cards/discounts by submitting a review: www.novusbio.com/reviews/submit/NB600-799

Earn gift cards/discounts by submitting a publication using this product:
www.novusbio.com/publications



