

# Product Datasheet

## Siglec-1/CD169 Antibody (HSn 7D2) - BSA Free NB600-534

Unit Size: 0.1 ml

Store at 4C short term. Aliquot and store at -20C long term. Avoid freeze-thaw cycles.

[www.novusbio.com](http://www.novusbio.com)



[technical@novusbio.com](mailto:technical@novusbio.com)

**Reviews: 1 Publications: 25**

Protocols, Publications, Related Products, Reviews, Research Tools and Images at:  
[www.novusbio.com/NB600-534](http://www.novusbio.com/NB600-534)

Updated 11/4/2025 v.20.1

**Earn rewards for product  
reviews and publications.**

Submit a publication at [www.novusbio.com/publications](http://www.novusbio.com/publications)

Submit a review at [www.novusbio.com/reviews/destination/NB600-534](http://www.novusbio.com/reviews/destination/NB600-534)

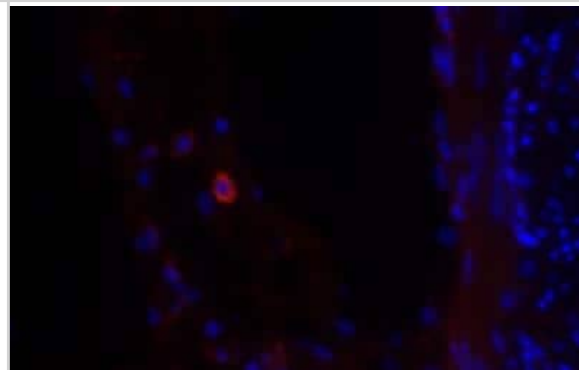


**NB600-534****Siglec-1/CD169 Antibody (HSn 7D2) - BSA Free**

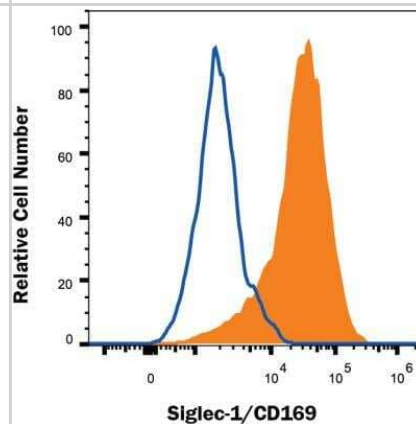
<b>Product Information</b>	
<b>Unit Size</b>	0.1 ml
<b>Concentration</b>	1.0 mg/ml
<b>Storage</b>	Store at 4C short term. Aliquot and store at -20C long term. Avoid freeze-thaw cycles.
<b>Clonality</b>	Monoclonal
<b>Clone</b>	HSn 7D2
<b>Preservative</b>	0.05% Sodium Azide
<b>Isotype</b>	IgG1
<b>Purity</b>	Protein G purified
<b>Buffer</b>	PBS
<b>Product Description</b>	
<b>Description</b>	Novus Biologicals Mouse Siglec-1/CD169 Antibody (HSn 7D2) - BSA Free (NB600-534) is a monoclonal antibody validated for use in IHC, WB, ELISA, Flow and ICC/IF. Anti-Siglec-1/CD169 Antibody: Cited in 24 publications. All Novus Biologicals antibodies are covered by our 100% guarantee.
<b>Host</b>	Mouse
<b>Gene ID</b>	6614
<b>Gene Symbol</b>	SIGLEC1
<b>Species</b>	Human, Mouse, Porcine, Virus
<b>Reactivity Notes</b>	Porcine reactivity reported in scientific literature (PMID: 27441395). Mouse reactivity reported in scientific literature. Not yet tested in other species. Use in Virus reported in scientific literature (PMID:27487279).
<b>Immunogen</b>	Full-length purified human Sialoadhesin (d1-4)Fc protein. [Swiss-Prot# Q9BZZ2]
<b>Product Application Details</b>	
<b>Applications</b>	Western Blot, Immunohistochemistry-Paraffin, ELISA, Flow Cytometry, Immunocytochemistry/ Immunofluorescence, Immunohistochemistry, Immunohistochemistry-Frozen, In vitro assay, In vivo assay, Radioimmunoassay
<b>Recommended Dilutions</b>	Western Blot reported in scientific literature, Flow Cytometry 1:10-1:1000, ELISA 1:100-1:2000, Immunohistochemistry 1:10-1:500. Use reported in scientific literature (PMID 26106049), Immunocytochemistry/ Immunofluorescence reported in scientific literature (PMID 28794041), Immunohistochemistry-Paraffin 1:10-1:500, Immunohistochemistry-Frozen 1:10-1:500, In vitro assay, Radioimmunoassay, In vivo assay reported in scientific literature (PMID 18414664)
<b>Application Notes</b>	This Sialoadhesin Antibody (HSn 7D2) is useful for Immunohistochemistry (paraffin-embedded, acetone-fixed, and frozen sections), Flow Cytometry, Radioimmunoassay and ELISA.

## Images

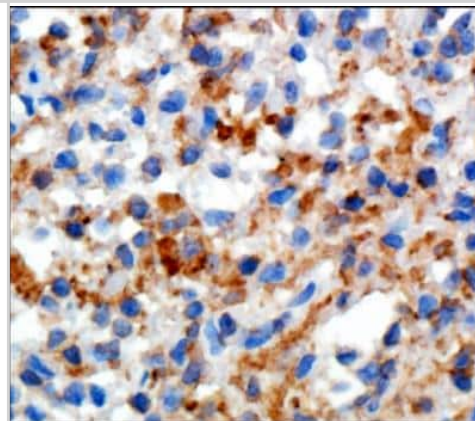
Immunohistochemistry-Frozen: Siglec-1/CD169 Antibody (HSn 7D2) [NB600-534] - Adult mouse small intestine. NB600-534 Siglec-1 was used at 1:500 and labeled with Alexa Fluor 568 conjugated secondary antibody (Red). DAPI shown as blue. Image from verified customer review.



Flow Cytometry: Siglec-1/CD169 Antibody (HSn 7D2) [NB600-534] - Human CD14+ PBMC differentiated to M1 macrophages with rhGM-CSF were stained with Mouse Anti-Siglec-1/CD169 Monoclonal Antibody (NB600-534, filled histogram), or Mouse IgG1 isotype control (MAB002, open histogram) followed by APC-conjugated Anti-Mouse IgG Secondary Antibody (F0101B).



Immunohistochemistry-Paraffin: Siglec-1/CD169 Antibody (HSn 7D2) [NB600-534] - Staining of Sialoadhesin in human spleen using DAB with hematoxylin counterstain.



## Publications

Johnson BE, Creason AL, Stommel JM et al. An omic and multidimensional spatial atlas from serial biopsies of an evolving metastatic breast cancer *Cell reports. Medicine* 2022-02-15 [PMID: 35243422]

Maeshima Y, Kataoka TR, Vandenbon A et Al. Intra-patient spatial comparison of non-metastatic and metastatic lymph nodes reveals the reduction of CD169(+) macrophages by metastatic breast cancers *EBioMedicine* 2024-08-21 [PMID: 39173531]

Yanqiu Wang, Zhou Jin, Jiajun Sun, Xinxin Chen, Pu Xie, Yulin Zhou, Shu Wang The role of activated monocyte IFN/SIGLEC1 signalling in Graves' disease. *The Journal of endocrinology* 2022-09-08 [PMID: 35695299]

Dhiraj K. Singh, Ekaterina Aladyeva, Shibali Das, Bindu Singh, Ekaterina Esaulova, Amanda Swain, Mushtaq Ahmed, Journey Cole, Chivonne Moodley, Smriti Mehra, Larry S. Schlesinger, Maxim N. Artyomov, Shabaana A. Khader, Deepak Kaushal Myeloid cell interferon responses correlate with clearance of SARS-CoV-2 *Nature Communications* 2022-02-03 [PMID: 35115549]

Zwart ES, van Ee T, Affandi AJ et al. Spatial immune composition of tumor microenvironment in patients with pancreatic cancer *Cancer immunology, immunotherapy : CII* 2023-11-08 [PMID: 37938368] (FLOW, Human)

Verollet C, Dupont M, Souriant S et al. Tuberculosis-associated IFN-I induces Siglec-1 on tunneling nanotubes and favors HIV-1 spread in macrophages *Elife* 2020-04-01 [PMID: 32223897]

Tanboon J, Uruha A, Arahata Y et al. Inflammatory features in sporadic late-onset nemaline myopathy are independent from monoclonal gammopathy *Brain pathology (Zurich, Switzerland)* 2021-05-01 [PMID: 34043258]

Ostendorf L, Dittert P, Biesen R et al. SIGLEC1 (CD169): a marker of active neuroinflammation in the brain but not in the blood of multiple sclerosis patients *Scientific reports* 2021-05-13 [PMID: 33986412] (IF/IHC, Human)

Roos A, Preusse C, Hathazi D et al. Proteomic Profiling Unravels a Key Role of Specific Macrophage Subtypes in Sporadic Inclusion Body Myositis *Front Immunol* 2019-05-31 [PMID: 31143183] (IHC-Fr, Human)

Jadapalli JK, Wright GW, Kain V et al. Doxorubicin triggers splenic contraction and irreversible dysregulation of COX and LOX that alters the inflammation-resolution program in the myocardium *Am J Physiol Heart Circ Physiol* 2018-08-04 [PMID: 30074834] (IHC-Fr, Mouse)

Akiyama H, Ramirez NP, Gibson G et al. Interferon-Inducible CD169/Siglec1 Attenuates Anti-HIV-1 Effects of Alpha Interferon *J Virol* 2017-08-11 [PMID: 28794041] (IHC-Fr, Human)

Verollet C, Dupont M, Souriant S et al. Tuberculosis-associated IFN-I induces Siglec-1 on tunneling nanotubes and favors HIV-1 spread in macrophages *BioRxiv* (IHC-P, ICC/IF, Human)

More publications at <http://www.novusbio.com/NB600-534>



## Procedures

### IHC Protocol for NB600-534: Sialoadhesin Antibody (HSn 7D2)

#### Immunohistochemistry-Paraffin Embedded Sections

##### Antigen Unmasking:

Bring slides to a boil in 10 mM sodium citrate buffer (pH 6.0) then maintain at a sub-boiling temperature for 10 minutes. Cool slides on bench-top for 30 minutes.

##### Staining:

1. Wash sections in deionized water three times for 5 minutes each.
2. Wash sections in wash buffer for 5 minutes.
3. Block each section with 100-400 ul blocking solution for 1 hour at room temperature.
4. Remove blocking solution and add 100-400 ul diluted primary antibody. Incubate overnight at 4 C.
5. Remove antibody solution and wash sections in wash buffer three times for 5 minutes each.
6. Add 100-400 ul biotinylated diluted secondary antibody. Incubate 30 minutes at room temperature.
7. Remove secondary antibody solution and wash sections three times with wash buffer for 5 minutes each.
8. Add 100-400 ul Streptavidin-HRP reagent to each section and incubate for 30 minutes at room temperature.
9. Wash sections three times in wash buffer for 5 minutes each.
10. Add 100-400 ul DAB substrate to each section and monitor staining closely.
11. As soon as the sections develop, immerse slides in deionized water.
12. Counterstain sections in hematoxylin.
13. Wash sections in deionized water two times for 5 minutes each.
14. Dehydrate sections.
15. Mount coverslips.

\*The above information is only intended as a guide. The researcher should determine what protocol best meets their needs. Please follow safe laboratory procedures.





### **Novus Biologicals USA**

10730 E. Briarwood Avenue  
Centennial, CO 80112  
USA  
Phone: 303.730.1950  
Toll Free: 1.888.506.6887  
Fax: 303.730.1966  
nb-customerservice@bio-techne.com

### **Bio-Techne Canada**

21 Canmotor Ave  
Toronto, ON M8Z 4E6  
Canada  
Phone: 905.827.6400  
Toll Free: 855.668.8722  
Fax: 905.827.6402  
canada.inquires@bio-techne.com

### **Bio-Techne Ltd**

19 Barton Lane  
Abingdon Science Park  
Abingdon, OX14 3NB, United Kingdom  
Phone: (44) (0) 1235 529449  
Free Phone: 0800 37 34 15  
Fax: (44) (0) 1235 533420  
info.EMEA@bio-techne.com

### **General Contact Information**

www.novusbio.com  
Technical Support: nb-technical@bio-techne.com  
Orders: nb-customerservice@bio-techne.com  
General: novus@novusbio.com

### **Products Related to NB600-534**

---

NBP2-33376H	Blue Marker Antibody (6F4-F6) [HRP]
HAF007	Goat anti-Mouse IgG Secondary Antibody [HRP]
NB7539	Goat anti-Mouse IgG (H+L) Secondary Antibody [HRP]
NBP1-97005-0.5mg	Mouse IgG1 Isotype Control (MG1)

---

### **Limitations**

This product is for research use only and is not approved for use in humans or in clinical diagnosis. Primary Antibodies are guaranteed for 1 year from date of receipt.

For more information on our 100% guarantee, please visit [www.novusbio.com/guarantee](http://www.novusbio.com/guarantee)

Earn gift cards/discounts by submitting a review: [www.novusbio.com/reviews/submit/NB600-534](http://www.novusbio.com/reviews/submit/NB600-534)

Earn gift cards/discounts by submitting a publication using this product:  
[www.novusbio.com/publications](http://www.novusbio.com/publications)

