

# Product Datasheet

## ASH2L Antibody - BSA Free

### NB600-281

Unit Size: 100 ul

Store at 4C. Do not freeze.

[www.novusbio.com](http://www.novusbio.com)



[technical@novusbio.com](mailto:technical@novusbio.com)

#### Publications: 1

Protocols, Publications, Related Products, Reviews, Research Tools and Images at:  
[www.novusbio.com/NB600-281](http://www.novusbio.com/NB600-281)

Updated 9/9/2025 v.20.1

Earn rewards for product  
reviews and publications.

Submit a publication at [www.novusbio.com/publications](http://www.novusbio.com/publications)

Submit a review at [www.novusbio.com/reviews/destination/NB600-281](http://www.novusbio.com/reviews/destination/NB600-281)



**NB600-281**

ASH2L Antibody - BSA Free

Product Information	
Unit Size	100 ul
Concentration	1.0 mg/ml
Storage	Store at 4C. Do not freeze.
Clonality	Polyclonal
Preservative	0.09% Sodium Azide
Isotype	IgG
Purity	Immunogen affinity purified
Buffer	Tris-Citrate/Phosphate (pH 7.0 - 8.0)

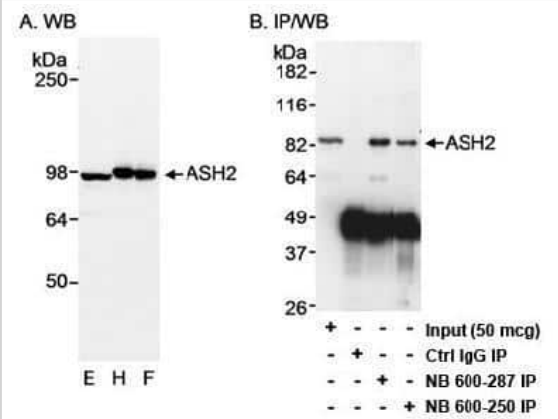
Product Description	
Description	Novus Biologicals Rabbit ASH2L Antibody - BSA Free (NB600-281) is a polyclonal antibody validated for use in IHC, WB, IP and ChIP. Anti-ASH2L Antibody: Cited in 1 publication. All Novus Biologicals antibodies are covered by our 100% guarantee.
Host	Rabbit
Gene ID	9070
Gene Symbol	ASH2L
Species	Human
Immunogen	The immunogen recognized by this antibody maps to a region between residue 575 and the C-terminus (residue 628) of human Absent, Small, or Homeotic-Like 2 using the numbering given in Swiss-Prot entry Q9UBL3 (GeneID 9070).

Product Application Details	
Applications	Western Blot, Immunohistochemistry-Paraffin, Immunohistochemistry, Immunoprecipitation, Chromatin Immunoprecipitation (ChIP)
Recommended Dilutions	Western Blot 1:2000-1:20000, Immunohistochemistry 1:500 - 1:2000, Immunoprecipitation 2-5 ug/mg lysate, Immunohistochemistry-Paraffin 1:500 - 1:2000, Chromatin Immunoprecipitation (ChIP) 1-5 ug
Application Notes	Epitope retrieval with citrate buffer pH6.0 is recommended for FFPE tissue sections.

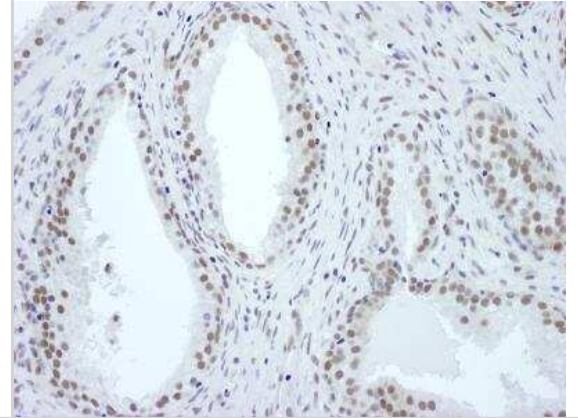


## Images

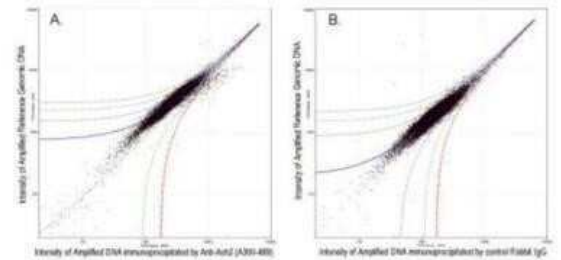
Western Blot: ASH2L Antibody [NB600-281] - Detection of Human ASH2on HeLa whole cell lysate using NB600-281. ASH2 was also immunoprecipitated with rabbit anti-ASH2 antibody NB600-250.



Immunohistochemistry-Paraffin: ASH2L Antibody [NB600-281] - Sample: FFPE section of human prostate carcinoma. Antibody: Affinity purified rabbit anti-ASH2 used at a dilution of 1:1,000 (1ug/ml). Detection: DAB. Counterstain: IHC Hematoxylin (blue).



Chromatin Immunoprecipitation: ASH2L Antibody [NB600-281] - ChIP-chip scatter plot of anti-Ash2 enriched DNA binding sites versus input reference DNA. A. 10 ug of NB600-281 was used to immunoprecipitate chromatin from K562 cells according to Ren et al (Genes Dev. 2002 16: 245-256). Immunoprecipitated DNA and reference DNA were amplified via ligation-mediated PCR and the products labeled with fluorescent dNTPs. The labeled ChIP and reference DNA were pooled, hybridized to a DNA microarray, and analyzed. Data points below the +3 SD curve (red line) represent significantly enriched binding sites. B. As a control, a similar experiment was performed using normal rabbit IgG. Compared to the anti-Ash2 ChIP, normal rabbit IgG showed little enrichment.



## Publications

Bieluszewska A, Weglewska M, Bieluszewski T et al. PKA-binding domain of AKAP8 is essential for direct interaction with DPY30 protein FEBS J. 2017-12-30 [PMID: 29288530] (WB, Human)



### Novus Biologicals USA

10730 E. Briarwood Avenue  
Centennial, CO 80112  
USA  
Phone: 303.730.1950  
Toll Free: 1.888.506.6887  
Fax: 303.730.1966  
nb-customerservice@bio-techne.com

### Bio-Techne Canada

21 Canmotor Ave  
Toronto, ON M8Z 4E6  
Canada  
Phone: 905.827.6400  
Toll Free: 855.668.8722  
Fax: 905.827.6402  
canada.inquires@bio-techne.com

### Bio-Techne Ltd

19 Barton Lane  
Abingdon Science Park  
Abingdon, OX14 3NB, United Kingdom  
Phone: (44) (0) 1235 529449  
Free Phone: 0800 37 34 15  
Fax: (44) (0) 1235 533420  
info.EMEA@bio-techne.com

### General Contact Information

www.novusbio.com  
Technical Support: nb-technical@bio-techne.com  
Orders: nb-customerservice@bio-techne.com  
General: novus@novusbio.com

### Products Related to NB600-281

---

NBL1-07765	ASH2L Overexpression Lysate
NBP2-33376H	Blue Marker Antibody (6F4-F6) [HRP]
HAF008	Goat anti-Rabbit IgG Secondary Antibody [HRP]
NB7160	Goat anti-Rabbit IgG (H+L) Secondary Antibody [HRP]
NBP2-24891	Rabbit IgG Isotype Control

---

### Limitations

This product is for research use only and is not approved for use in humans or in clinical diagnosis. Primary Antibodies are guaranteed for 1 year from date of receipt.

For more information on our 100% guarantee, please visit [www.novusbio.com/guarantee](http://www.novusbio.com/guarantee)

Earn gift cards/discounts by submitting a review: [www.novusbio.com/reviews/submit/NB600-281](http://www.novusbio.com/reviews/submit/NB600-281)

Earn gift cards/discounts by submitting a publication using this product:  
[www.novusbio.com/publications](http://www.novusbio.com/publications)

