

Product Datasheet

LEO1 Antibody - BSA Free NB600-276

Unit Size: 100 ul

Store at 4C. Do not freeze.

www.novusbio.com



technical@novusbio.com

Publications: 2

Protocols, Publications, Related Products, Reviews, Research Tools and Images at:
www.novusbio.com/NB600-276

Updated 9/9/2025 v.20.1

Earn rewards for product
reviews and publications.

Submit a publication at www.novusbio.com/publications

Submit a review at www.novusbio.com/reviews/destination/NB600-276



NB600-276

LEO1 Antibody - BSA Free

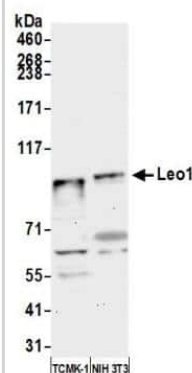
Product Information	
Unit Size	100 ul
Concentration	1.0 mg/ml
Storage	Store at 4C. Do not freeze.
Clonality	Polyclonal
Preservative	0.09% Sodium Azide
Isotype	IgG
Purity	Immunogen affinity purified
Buffer	Tris-Citrate/Phosphate (pH 7.0 - 8.0)

Product Description	
Description	Novus Biologicals Rabbit LEO1 Antibody - BSA Free (NB600-276) is a polyclonal antibody validated for use in IHC, WB and IP. Anti-LEO1 Antibody: Cited in 2 publications. All Novus Biologicals antibodies are covered by our 100% guarantee.
Host	Rabbit
Gene ID	123169
Gene Symbol	LEO1
Species	Human, Mouse
Immunogen	A synthetic peptide which maps to a region between residues 550 and 600 of human senescence downregulated leo1-like using the numbering given in TrEMBL entry Q8WVC0 (GeneID 123169).

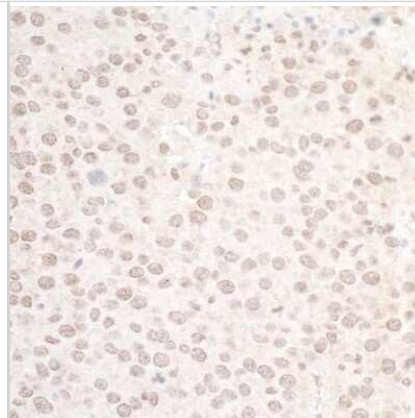
Product Application Details	
Applications	Western Blot, Immunohistochemistry-Paraffin, Immunohistochemistry, Immunoprecipitation
Recommended Dilutions	Western Blot 1:1000-1:5000, Immunohistochemistry, Immunoprecipitation 2-8 ug/mg lysate, Immunohistochemistry-Paraffin 1:1000-1:5000
Application Notes	Epitope retrieval with Tris-EDTA pH9.0 is recommended for FFPE tissue sections.

Images

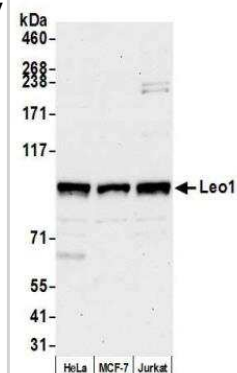
Western Blot: LEO1 Antibody [NB600-276] - Detection of mouse Leo1 by western blot. Samples: Whole cell lysate (15 ug) from TCMK-1 and NIH 3T3 cells prepared using NETN lysis buffer. Antibody: Affinity purified rabbit anti-Leo1 antibody [NB600-276] used for WB at 0.04 ug/ml. Detection: Chemiluminescence with an exposure time of 30 seconds.



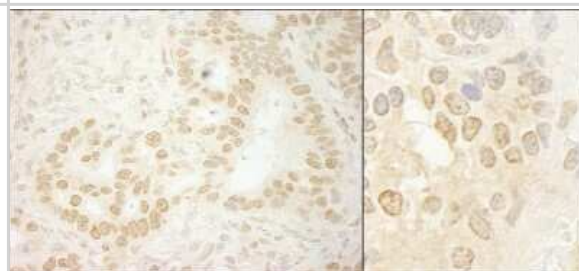
Immunohistochemistry: LEO1 Antibody [NB600-276] - Detection of mouse Leo1 by immunohistochemistry. Sample: FFPE section of mouse renal cell carcinoma. Antibody: Affinity purified rabbit anti-Leo1 (NB600-276). Detection: DAB



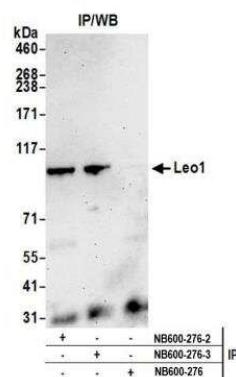
Western Blot: LEO1 Antibody [NB600-276] - Detection of human Leo1 by western blot. Samples: Whole cell lysate (15 ug) from HeLa, MCF-7, and Jurkat cells prepared using NETN lysis buffer. Antibody: Affinity purified rabbit anti-Leo1 antibody [NB600-276] used for WB at 0.04 ug/ml. Detection: Chemiluminescence with an exposure time of 30 seconds.



Immunohistochemistry: LEO1 Antibody [NB600-276] - Sample: FFPE section of human stomach carcinoma (left) and mouse teratoma (right). Antibody: Affinity purified rabbit anti-LEO1 used at a dilution of 1:5,000 (0.2ug/ml) and 1:1,000 (1ug/ml). Detection: DAB



Immunoprecipitation: LEO1 Antibody [NB600-276] - Detection of human Leo1 by western blot of immunoprecipitates. Samples: Whole cell lysate (1.0 mg per IP reaction; 20% of IP loaded) from HeLa cells prepared using NETN lysis buffer. Antibodies: Affinity purified rabbit anti-Leo1 antibody [NB600-276] (lot 3) used for IP at 6 ug per reaction. Leo1 was also immunoprecipitated by a previous lot of this antibody (lot 2). For blotting immunoprecipitated Leo1, NB600-276 was used at 0.04 ug/ml. Detection: Chemiluminescence with an exposure time of 75 seconds.



Publications

Endres T, Solvie D, Heidelberger JB, et al. Ubiquitylation of MYC couples transcription elongation with double-strand break repair at active promoters *Molecular cell* 2021-01-15 [PMID: 33453168]

Miyazaki K, Inoue S, Yamada K et al. Differential usage of alternate promoters of the human stress response gene ATF3 in stress response and cancer cells. *Nucleic Acids Res* 2009-04-01 [PMID: 19136462]



Novus Biologicals USA

10730 E. Briarwood Avenue
Centennial, CO 80112
USA

Phone: 303.730.1950

Toll Free: 1.888.506.6887

Fax: 303.730.1966

nb-customerservice@bio-techne.com

Bio-Techne Canada

21 Canmotor Ave
Toronto, ON M8Z 4E6
Canada

Phone: 905.827.6400

Toll Free: 855.668.8722

Fax: 905.827.6402

canada.inquires@bio-techne.com

Bio-Techne Ltd

19 Barton Lane
Abingdon Science Park
Abingdon, OX14 3NB, United Kingdom

Phone: (44) (0) 1235 529449

Free Phone: 0800 37 34 15

Fax: (44) (0) 1235 533420

info.EMEA@bio-techne.com

General Contact Information

www.novusbio.com

Technical Support: nb-technical@bio-techne.com

Orders: nb-customerservice@bio-techne.com

General: novus@novusbio.com

Products Related to NB600-276

NBL1-12488	LEO1 Overexpression Lysate
NBP2-33376H	Blue Marker Antibody (6F4-F6) [HRP]
HAF008	Goat anti-Rabbit IgG Secondary Antibody [HRP]
NB7160	Goat anti-Rabbit IgG (H+L) Secondary Antibody [HRP]
NBP2-24891	Rabbit IgG Isotype Control

Limitations

This product is for research use only and is not approved for use in humans or in clinical diagnosis. Primary Antibodies are guaranteed for 1 year from date of receipt.

For more information on our 100% guarantee, please visit www.novusbio.com/guarantee

Earn gift cards/discounts by submitting a review: www.novusbio.com/reviews/submit/NB600-276

Earn gift cards/discounts by submitting a publication using this product:
www.novusbio.com/publications



