

Product Datasheet

KMT2A/MLL Antibody - BSA Free NB600-256

Unit Size: 100 ul

Store at 4C. Do not freeze.

www.novusbio.com



technical@novusbio.com

Reviews: 2 Publications: 4

Protocols, Publications, Related Products, Reviews, Research Tools and Images at:
www.novusbio.com/NB600-256

Updated 9/9/2025 v.20.1

**Earn rewards for product
reviews and publications.**

Submit a publication at www.novusbio.com/publications

Submit a review at www.novusbio.com/reviews/destination/NB600-256



NB600-256

KMT2A/MLL Antibody - BSA Free

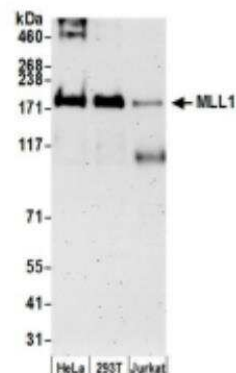
Product Information	
Unit Size	100 ul
Concentration	1.0 mg/ml
Storage	Store at 4C. Do not freeze.
Clonality	Polyclonal
Preservative	0.09% Sodium Azide
Isotype	IgG
Purity	Immunogen affinity purified
Buffer	Tris-Citrate/Phosphate (pH 7.0 - 8.0)

Product Description	
Description	Novus Biologicals Rabbit KMT2A/MLL Antibody - BSA Free (NB600-256) is a polyclonal antibody validated for use in WB, Flow, Simple Western, IP and ChIP. Anti-KMT2A/MLL Antibody: Cited in 4 publications. All Novus Biologicals antibodies are covered by our 100% guarantee.
Host	Rabbit
Gene ID	4297
Gene Symbol	KMT2A
Species	Human
Immunogen	The immunogen recognized by this antibody maps to a region between residues 2725 and 2775 of human myeloid/lymphoid or mixed-lineage leukemia 1 using the number given in Swiss-Prot entry Q03164 (GeneID 4297).

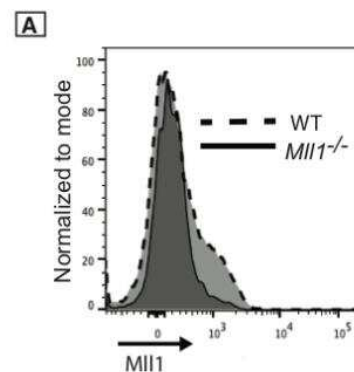
Product Application Details	
Applications	Western Blot, Simple Western, Flow Cytometry, Immunoprecipitation, Chromatin Immunoprecipitation (ChIP)
Recommended Dilutions	Western Blot 1:2000-1:10000, Simple Western 1:10, Flow Cytometry, Immunoprecipitation 2-5 ug/mg of lysate, Chromatin Immunoprecipitation (ChIP) 1-5 ug/ml
Application Notes	KMT2A/MLL antibody validated for FLOW from a verified customer review.

Images

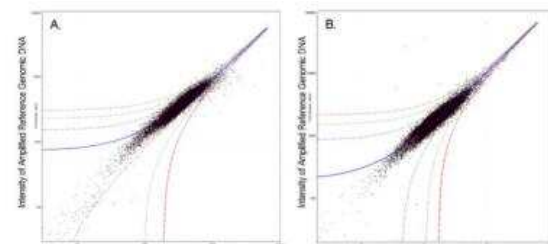
Western Blot: KMT2A/MLL Antibody [NB600-256] - Whole cell lysate (50 ug) from HeLa, HEK293T, and Jurkat cells prepared using NETN lysis buffer. Antibody: Affinity purified rabbit anti-MLL1 antibody used for WB at 0.1 ug/ml. Detection: Chemiluminescence with an exposure time of 3 minutes.



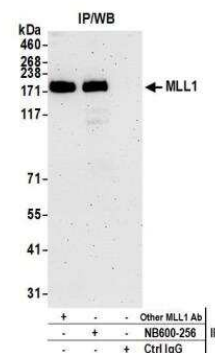
Flow Cytometry: KMT2A/MLL Antibody [NB600-256] - Flow cytometry testing of KMT2A/MLL antibody on murine WT and Mll1^{-/-} CD4 T cells that were stimulated in-vitro with anti-CD3/ -CD28 antibodies. Image submitted by our verified customer (see Review section for additional details).



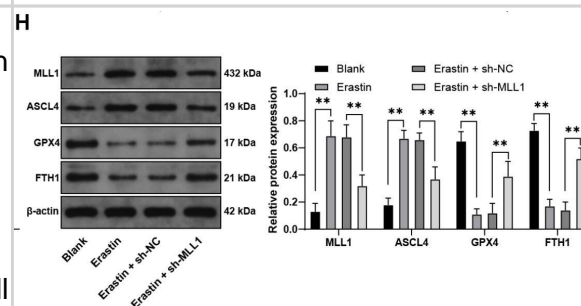
Chromatin Immunoprecipitation: KMT2A/MLL Antibody [NB600-256] - A. 10 ug of was used to immunoprecipitate chromatin from K562 cells according to Ren et al (Genes Dev. 2002 16: 245-256).



Immunoprecipitation: KMT2A/MLL Antibody [NB600-256] - Detection of human MLL1 by western blot of immunoprecipitates. Samples: Whole cell lysate (1.0 mg per IP reaction; 20% of IP loaded) from HEK293T cells prepared using NETN lysis buffer. Antibodies: Affinity purified rabbit anti-MLL1 antibody NB600-256 used for IP at 3 ug per reaction. MLL1 was also immunoprecipitated by another rabbit anti-MLL1 antibody. For blotting immunoprecipitated MLL1, NB600-256 was used at 1 ug/ml. Detection: Chemiluminescence with an exposure time of 3 minutes.



Inhibition of MLL1 promotes the invasion and migration of HTR-8/SVneo cells and represses ferroptosis. HTR-8/SVneo cells were transfected with sh-MLL1, with sh-NC as the control. A: Detection of transfection efficiency by qRT-PCR; then HTR-8/SVneo cells were treated with 10 umol/L Erastin for 24 h to establish a cell model. B: Detection of MLL1 expression in cells by qRT-PCR. C: Detection of cell viability by CCK-8 assay. D-F: Detection of MDA, Fe²⁺, and GSH levels in cells by kits. G: Detection of ROS levels by fluorescence. H: Detection of MLL1, ASCL4, GPX4, and FTH1 expressions in cells by Western blot. I: Detection of cell invasion and migration by Transwell. The cell experiments were repeated three times independently. Data in panel A were analyzed by t test. Data in panels BCDEFGI were analyzed by one-way ANOVA, and data in panel H were analyzed by two-way ANOVA, followed by Tukey's multiple comparisons test. **P < 0.01 Image collected and cropped by CiteAb from the following open publication (<https://biologydirect.biomedcentral.com/articles/10.1186/s13062-024-00572-0>), licensed under a CC-BY license. Not internally tested by Novus Biologicals.



Publications

Zhang L, Ye F, Zuo Z et al. Long noncoding RNA TPT1-AS1 promotes the progression and metastasis of colorectal cancer by upregulating the TPT1-mediated FAK and JAK-STAT3 signalling pathways *Aging (Albany NY)* 2021-02-15 [PMID: 33428595]

Jang M, An J, Oh SW et al. Matrix stiffness epigenetically regulates the oncogenic activation of the Yes-associated protein in gastric cancer *Nature biomedical engineering* 2020-12-07 [PMID: 33288878]

Schaller M, Ito T, Allen RM et al. Epigenetic regulation of IL-12-dependent T cell proliferation. *J Leukoc Biol* 2015-06-09 [PMID: 26059830]

Park UH, Yoon SK, Park T et al. Additional sex comb-like (ASXL) proteins 1 and 2 play opposite roles in adipogenesis via reciprocal regulation of peroxisome proliferator-activated receptor γ . *J Biol Chem* 2011-01-01 [PMID: 21047783]





Novus Biologicals USA

10730 E. Briarwood Avenue
Centennial, CO 80112
USA
Phone: 303.730.1950
Toll Free: 1.888.506.6887
Fax: 303.730.1966
nb-customerservice@bio-techne.com

Bio-Techne Canada

21 Canmotor Ave
Toronto, ON M8Z 4E6
Canada
Phone: 905.827.6400
Toll Free: 855.668.8722
Fax: 905.827.6402
canada.inquires@bio-techne.com

Bio-Techne Ltd

19 Barton Lane
Abingdon Science Park
Abingdon, OX14 3NB, United Kingdom
Phone: (44) (0) 1235 529449
Free Phone: 0800 37 34 15
Fax: (44) (0) 1235 533420
info.EMEA@bio-techne.com

General Contact Information

www.novusbio.com
Technical Support: nb-technical@bio-techne.com
Orders: nb-customerservice@bio-techne.com
General: novus@novusbio.com

Products Related to NB600-256

NBP2-33376H	Blue Marker Antibody (6F4-F6) [HRP]
HAF008	Goat anti-Rabbit IgG Secondary Antibody [HRP]
NB7160	Goat anti-Rabbit IgG (H+L) Secondary Antibody [HRP]
NBP2-24891	Rabbit IgG Isotype Control

Limitations

This product is for research use only and is not approved for use in humans or in clinical diagnosis. Primary Antibodies are guaranteed for 1 year from date of receipt.

For more information on our 100% guarantee, please visit www.novusbio.com/guarantee

Earn gift cards/discounts by submitting a review: www.novusbio.com/reviews/submit/NB600-256

Earn gift cards/discounts by submitting a publication using this product:
www.novusbio.com/publications

