

Product Datasheet

ASH2L Antibody - BSA Free

NB600-250

Unit Size: 100 ul

Store at 4C. Do not freeze.

www.novusbio.com



technical@novusbio.com

Publications: 13

Protocols, Publications, Related Products, Reviews, Research Tools and Images at:
www.novusbio.com/NB600-250

Updated 9/9/2025 v.20.1

Earn rewards for product reviews and publications.

Submit a publication at www.novusbio.com/publications

Submit a review at www.novusbio.com/reviews/destination/NB600-250



NB600-250

ASH2L Antibody - BSA Free

Product Information	
Unit Size	100 ul
Concentration	1.0 mg/ml
Storage	Store at 4C. Do not freeze.
Clonality	Polyclonal
Preservative	0.09% Sodium Azide
Isotype	IgG
Purity	Immunogen affinity purified
Buffer	Tris-Citrate/Phosphate (pH 7.0 - 8.0)

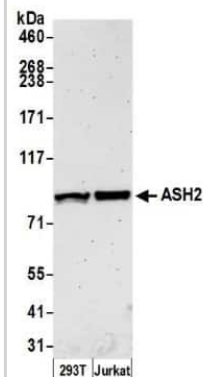
Product Description	
Description	Novus Biologicals Rabbit ASH2L Antibody - BSA Free (NB600-250) is a polyclonal antibody validated for use in IHC, WB and IP. Anti-ASH2L Antibody: Cited in 12 publications. All Novus Biologicals antibodies are covered by our 100% guarantee.
Host	Rabbit
Gene ID	9070
Gene Symbol	ASH2L
Species	Human
Immunogen	The immunogen recognized by this antibody maps to a region between residue 50 and 100 of human Absent, Small, or Homeotic-Like 2 using the numbering given in entry NP_004665.1 (GeneID 9070).

Product Application Details	
Applications	Western Blot, Immunohistochemistry-Paraffin, Immunohistochemistry, Immunoprecipitation
Recommended Dilutions	Western Blot 1:2000 - 1:10000, Immunohistochemistry 1:1000 - 1:5000, Immunoprecipitation 2-10 ug/mg lysate, Immunohistochemistry-Paraffin 1:1000 - 1:5000
Application Notes	Epitope retrieval with citrate buffer pH 6.0 is recommended for FFPE tissue sections.

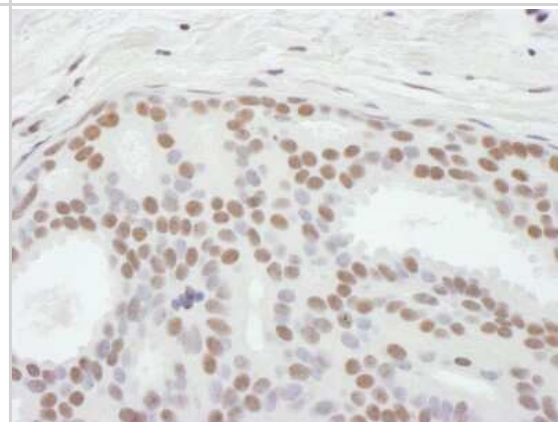


Images

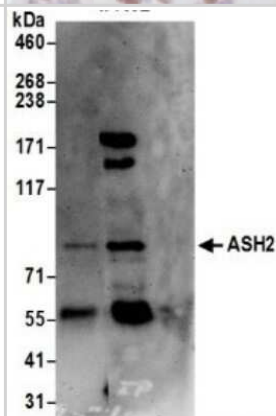
Western Blot: ASH2L Antibody [NB600-250] - Detection of human ASH2 by western blot. Samples: Whole cell lysate (50 ug) from HEK293T and Jurkat cells prepared using NETN lysis buffer. Antibody: Affinity purified rabbit anti-ASH2 antibody NB600-250 used for WB at 0.1 ug/ml. Detection: Chemiluminescence with an exposure time of 3 minutes.



Immunohistochemistry-Paraffin: ASH2L Antibody [NB600-250] - Section of human breast carcinoma. Antibody: Affinity purified rabbit anti-ASH2 used at a dilution of 1:1,000 (1 ug/ml). Detection: DAB



Western Blot: ASH2L Antibody [NB600-250] - Samples: Whole cell lysate (0.5 or 1.0 mg per IP reaction; 20% of IP loaded) from 293T cells prepared using NETN lysis buffer. Antibodies: Affinity purified rabbit anti-ASH2 antibody (lot was used at 1 ug/ml. Detection: Chemiluminescence with an exposure time of 3 minutes.



Publications

Kurniawati EM, Nusi NI, Mustokoweni S et al. The Thickness of Type I Collagen Fiber on Vaginal Wall Associated with The Degree of Anterior Pelvic Organ Prolapse Menopause 2020-01-01 (IF/IHC, IHC-P, Human)

Choi NM, Boss JM. Multiple histone methyl and acetyltransferase complex components bind the HLA-DRA gene. PLoS One 2012-01-01 [PMID: 22701520]

Dharmarajan V, Lee JH, Patel A et al. Structural basis for WDR5 interaction (Win) motif recognition in human SET1 family histone methyltransferases. J Biol Chem 2012-08-01 [PMID: 22665483]

Schwab KR, Patel SR, Dressler GR et al. Role of PTIP in class switch recombination and long-range chromatin interactions at the immunoglobulin heavy chain locus. Mol Cell Biol 2011-04-01 [PMID: 21282469]

Amat R, Gudas LJ. RARgamma is required for correct deposition and removal of Suz12 and H2A.Z in embryonic stem cells. J Cell Physiol 2011-02-01 [PMID: 20857416]

Pullirsch D, Hartel R, Kishimoto H et al. The Trithorax group protein Ash2l and Saf-A are recruited to the inactive X chromosome at the onset of stable X inactivation. Development 2010-03-01 [PMID: 20150277]

Tate CM, Lee JH, Skalnik DG et al. CXXC finger protein 1 contains redundant functional domains that support embryonic stem cell cytosine methylation, histone methylation, and differentiation. Mol Cell Biol 2009-07-01 [PMID: 19433449]

Lee J, Saha PK, Yang QH et al. Targeted inactivation of MLL3 histone H3-Lys-4 methyltransferase activity in the mouse reveals vital roles for MLL3 in adipogenesis. Proc Natl Acad Sci U S A 2008-12-01 [PMID: 19047629]

Nguyen P, Bar-Sela G, Sun L et al. BAT3 and SET1A form a complex with CTCFL/BORIS to modulate H3K4 histone dimethylation and gene expression. Mol Cell Biol 2008-11-01 [PMID: 18765639]

Guertin DA, Guntur KV, Bell GW et al. Functional genomics identifies TOR-regulated genes that control growth and division. Curr Biol 2006-05-01 [PMID: 16713952]

Mo R, Rao SM, Zhu YJ et al. Identification of the MLL2 complex as a coactivator for estrogen receptor alpha. J Biol Chem 2006-06-01 [PMID: 16603732]

Lee JH, Skalnik DG. CpG-binding protein (CXXC finger protein 1) is a component of the mammalian Set1 histone H3-Lys4 methyltransferase complex, the analogue of the yeast Set1/COMPASS complex. J Biol Chem 2005-12-01 [PMID: 16253997]

More publications at <http://www.novusbio.com/NB600-250>



Novus Biologicals USA

10730 E. Briarwood Avenue
Centennial, CO 80112
USA
Phone: 303.730.1950
Toll Free: 1.888.506.6887
Fax: 303.730.1966
nb-customerservice@bio-techne.com

Bio-Techne Canada

21 Canmotor Ave
Toronto, ON M8Z 4E6
Canada
Phone: 905.827.6400
Toll Free: 855.668.8722
Fax: 905.827.6402
canada.inquires@bio-techne.com

Bio-Techne Ltd

19 Barton Lane
Abingdon Science Park
Abingdon, OX14 3NB, United Kingdom
Phone: (44) (0) 1235 529449
Free Phone: 0800 37 34 15
Fax: (44) (0) 1235 533420
info.EMEA@bio-techne.com

General Contact Information

www.novusbio.com
Technical Support: nb-technical@bio-techne.com
Orders: nb-customerservice@bio-techne.com
General: novus@novusbio.com

Products Related to NB600-250

NBL1-07765	ASH2L Overexpression Lysate
NBP2-33376H	Blue Marker Antibody (6F4-F6) [HRP]
HAF008	Goat anti-Rabbit IgG Secondary Antibody [HRP]
NB7160	Goat anti-Rabbit IgG (H+L) Secondary Antibody [HRP]
NBP2-24891	Rabbit IgG Isotype Control

Limitations

This product is for research use only and is not approved for use in humans or in clinical diagnosis. Primary Antibodies are guaranteed for 1 year from date of receipt.

For more information on our 100% guarantee, please visit www.novusbio.com/guarantee

Earn gift cards/discounts by submitting a review: www.novusbio.com/reviews/submit/NB600-250

Earn gift cards/discounts by submitting a publication using this product:
www.novusbio.com/publications

