

Product Datasheet

KMT2A/MLL Antibody - BSA Free NB600-249

Unit Size: 100 ul

Store at 4C. Do not freeze.

www.novusbio.com



technical@novusbio.com

Publications: 1

Protocols, Publications, Related Products, Reviews, Research Tools and Images at:
www.novusbio.com/NB600-249

Updated 9/9/2025 v.20.1

Earn rewards for product
reviews and publications.

Submit a publication at www.novusbio.com/publications

Submit a review at www.novusbio.com/reviews/destination/NB600-249



NB600-249**KMT2A/MLL Antibody - BSA Free**

Product Information	
Unit Size	100 ul
Concentration	1.0 mg/ml
Storage	Store at 4C. Do not freeze.
Clonality	Polyclonal
Preservative	0.09% Sodium Azide
Isotype	IgG
Purity	Immunogen affinity purified
Buffer	Tris-Citrate/Phosphate (pH 7.0 - 8.0)

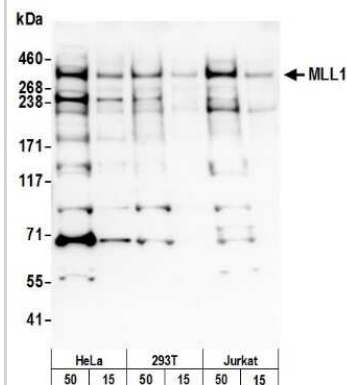
Product Description	
Description	Novus Biologicals Rabbit KMT2A/MLL Antibody - BSA Free (NB600-249) is a polyclonal antibody validated for use in WB and IP. Anti-KMT2A/MLL Antibody: Cited in 1 publication. All Novus Biologicals antibodies are covered by our 100% guarantee.
Host	Rabbit
Gene ID	4297
Gene Symbol	KMT2A
Species	Human
Immunogen	The immunogen recognized by this antibody maps to a region between residues 1320 and 1380 of human myeloid/lymphoid or mixed-lineage leukemia 1 using the number given in Swiss-Prot entry Q03164 (GeneID 4297).

Product Application Details	
Applications	Western Blot, Immunoprecipitation
Recommended Dilutions	Western Blot 1:2000 - 1:10000, Immunoprecipitation 2-10 ug/mg lysate
Application Notes	Optimal working dilutions should be determined experimentally by the investigator. Prepare working dilution immediately before use.

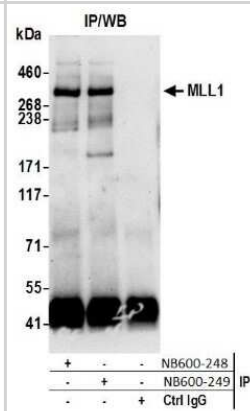


Images

Western Blot: KMT2A/MLL Antibody [NB600-249] - Samples: Nuclear Extract (15 and 50 ug) from HeLa, 293T, and Jurkat cells. Antibody: Affinity purified rabbit anti-MLL1 antibody used for WB at 0.1 ug/ml. Detection: Chemiluminescence with an exposure time of 3 minutes.



Immunoprecipitation: KMT2A/MLL Antibody [NB600-249] - Samples: Nuclear Extract (0.5 or 1.0 mg per IP reaction; 20% of IP loaded) from HeLa cells. Antibodies: Affinity purified rabbit anti-MLL1 antibody NB600-249 used for IP at 6 ug per reaction. MLL1 was also immunoprecipitated by rabbit anti-MLL1 antibody NB600-248. For blotting immunoprecipitated MLL1, NB600-249 was used at 1 ug/ml. Detection: Chemiluminescence with an exposure time of 30 seconds.



Publications

Rampalli S, Li L, Mak E et al. p38 MAPK signaling regulates recruitment of Ash2L-containing methyltransferase complexes to specific genes during differentiation. *Nat Struct Mol Biol* 2007-12-01 [PMID: 18026121]



Novus Biologicals USA

10730 E. Briarwood Avenue
Centennial, CO 80112
USA
Phone: 303.730.1950
Toll Free: 1.888.506.6887
Fax: 303.730.1966
nb-customerservice@bio-techne.com

Bio-Techne Canada

21 Canmotor Ave
Toronto, ON M8Z 4E6
Canada
Phone: 905.827.6400
Toll Free: 855.668.8722
Fax: 905.827.6402
canada.inquires@bio-techne.com

Bio-Techne Ltd

19 Barton Lane
Abingdon Science Park
Abingdon, OX14 3NB, United Kingdom
Phone: (44) (0) 1235 529449
Free Phone: 0800 37 34 15
Fax: (44) (0) 1235 533420
info.EMEA@bio-techne.com

General Contact Information

www.novusbio.com
Technical Support: nb-technical@bio-techne.com
Orders: nb-customerservice@bio-techne.com
General: novus@novusbio.com

Products Related to NB600-249

NBP2-33376H	Blue Marker Antibody (6F4-F6) [HRP]
HAF008	Goat anti-Rabbit IgG Secondary Antibody [HRP]
NB7160	Goat anti-Rabbit IgG (H+L) Secondary Antibody [HRP]
NBP2-24891	Rabbit IgG Isotype Control

Limitations

This product is for research use only and is not approved for use in humans or in clinical diagnosis. Primary Antibodies are guaranteed for 1 year from date of receipt.

For more information on our 100% guarantee, please visit www.novusbio.com/guarantee

Earn gift cards/discounts by submitting a review: www.novusbio.com/reviews/submit/NB600-249

Earn gift cards/discounts by submitting a publication using this product:
www.novusbio.com/publications

