

Product Datasheet

ELYS Antibody - BSA Free NB600-238

Unit Size: 100 ul

Store at 4C. Do not freeze.

www.novusbio.com



technical@novusbio.com

Publications: 2

Protocols, Publications, Related Products, Reviews, Research Tools and Images at:
www.novusbio.com/NB600-238

Updated 9/9/2025 v.20.1

Earn rewards for product
reviews and publications.

Submit a publication at www.novusbio.com/publications

Submit a review at www.novusbio.com/reviews/destination/NB600-238



NB600-238

ELYS Antibody - BSA Free

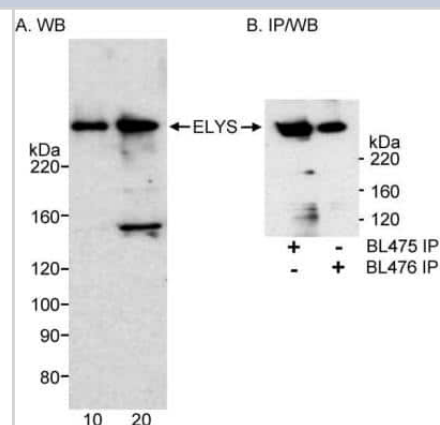
Product Information	
Unit Size	100 ul
Concentration	1.0 mg/ml
Storage	Store at 4C. Do not freeze.
Clonality	Polyclonal
Preservative	0.09% Sodium Azide
Isotype	IgG
Purity	Immunogen affinity purified
Buffer	Tris-Citrate/Phosphate (pH 7.0 - 8.0)

Product Description	
Description	Novus Biologicals Rabbit ELYS Antibody - BSA Free (NB600-238) is a polyclonal antibody validated for use in WB, Simple Western and IP. Anti-ELYS Antibody: Cited in 1 publication. All Novus Biologicals antibodies are covered by our 100% guarantee.
Host	Rabbit
Gene ID	25909
Gene Symbol	AHCTF1
Species	Human
Immunogen	A syntetic peptide between aa2220 and C-term

Product Application Details	
Applications	Western Blot, Simple Western, Immunoprecipitation
Recommended Dilutions	Western Blot 1:2000-1:10000, Simple Western, Immunoprecipitation 2 - 5 ug/mg lysate
Application Notes	Use in Simple Western reported in scientific literature (PMID:35017527) By Western Blot, this antibody recognizes a band at ~252.5 kDa, representing ELYS protein. May be used for immunoprecipitation, as well. Western blot of immunoprecipitates was performed using an immunoprecipitation/Western blot reagent and 4-8% SDS-PAGE. See Simple Western Antibody Database for Simple Western validation

Images

Immunoprecipitation: ELYS Antibody [NB600-238] - Nuclear Extract (10 and 20 ug for WB; 1 mg for IP/WB) from HeLa cells. Antibodies: A) Affinity purified rabbit anti-ELYS antibody BL476 used at 0.5 ug/ml for WB and 4 ug/mg lysate for IP. B) Affinity purified rabbit anti-ELYS antibodies BL476 and BL475 were each used at 4 ug/mg extract for IP. Immunoprecipitated ELYS was detected by WB using BL475 at 0.2 ug/ml. Detection: Chemiluminescence with exposure times of 3 to 5 minutes.



Publications

Chachoua I, Tzelepis I, Dai H et al. Canonical WNT signaling-dependent gating of MYC requires a noncanonical CTCF function at a distal binding site Nature communications 2022-01-11 [PMID: 35017527] (Simple Western, Human)

Lewandowska Ronnegren A Crosstalk between environmental signals and 3d genome organization in the regulation of gene expression Thesis 2021-01-01 (IP)





Novus Biologicals USA

10730 E. Briarwood Avenue
Centennial, CO 80112
USA
Phone: 303.730.1950
Toll Free: 1.888.506.6887
Fax: 303.730.1966
nb-customerservice@bio-techne.com

Bio-Techne Canada

21 Canmotor Ave
Toronto, ON M8Z 4E6
Canada
Phone: 905.827.6400
Toll Free: 855.668.8722
Fax: 905.827.6402
canada.inquires@bio-techne.com

Bio-Techne Ltd

19 Barton Lane
Abingdon Science Park
Abingdon, OX14 3NB, United Kingdom
Phone: (44) (0) 1235 529449
Free Phone: 0800 37 34 15
Fax: (44) (0) 1235 533420
info.EMEA@bio-techne.com

General Contact Information

www.novusbio.com
Technical Support: nb-technical@bio-techne.com
Orders: nb-customerservice@bio-techne.com
General: novus@novusbio.com

Products Related to NB600-238

NB800-PC9	HeLa Nuclear Cell Lysate
NBP2-33376H	Blue Marker Antibody (6F4-F6) [HRP]
HAF008	Goat anti-Rabbit IgG Secondary Antibody [HRP]
NB7160	Goat anti-Rabbit IgG (H+L) Secondary Antibody [HRP]
NBP2-24891	Rabbit IgG Isotype Control

Limitations

This product is for research use only and is not approved for use in humans or in clinical diagnosis. Primary Antibodies are guaranteed for 1 year from date of receipt.

For more information on our 100% guarantee, please visit www.novusbio.com/guarantee

Earn gift cards/discounts by submitting a review: www.novusbio.com/reviews/submit/NB600-238

Earn gift cards/discounts by submitting a publication using this product:
www.novusbio.com/publications

