

# Product Datasheet

## ELF3/ESE-1 Antibody - BSA Free NB600-212

Unit Size: 0.1 ml

Store at 4C short term. Aliquot and store at -20C long term. Avoid freeze-thaw cycles.

[www.novusbio.com](http://www.novusbio.com)



[technical@novusbio.com](mailto:technical@novusbio.com)

### Publications: 2

Protocols, Publications, Related Products, Reviews, Research Tools and Images at:  
[www.novusbio.com/NB600-212](http://www.novusbio.com/NB600-212)

Updated 9/9/2025 v.20.1

Earn rewards for product  
reviews and publications.

Submit a publication at [www.novusbio.com/publications](http://www.novusbio.com/publications)

Submit a review at [www.novusbio.com/reviews/destination/NB600-212](http://www.novusbio.com/reviews/destination/NB600-212)



**NB600-212****ELF3/ESE-1 Antibody - BSA Free**

<b>Product Information</b>	
<b>Unit Size</b>	0.1 ml
<b>Concentration</b>	1 mg/ml
<b>Storage</b>	Store at 4C short term. Aliquot and store at -20C long term. Avoid freeze-thaw cycles.
<b>Clonality</b>	Polyclonal
<b>Preservative</b>	0.02% Sodium Azide
<b>Isotype</b>	IgG
<b>Purity</b>	Immunogen affinity purified
<b>Buffer</b>	PBS

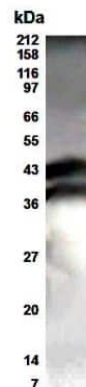
<b>Product Description</b>	
<b>Description</b>	Novus Biologicals Rabbit ELF3/ESE-1 Antibody - BSA Free (NB600-212) is a polyclonal antibody validated for use in WB and ICC/IF. Anti-ELF3/ESE-1 Antibody: Cited in 2 publications. All Novus Biologicals antibodies are covered by our 100% guarantee.
<b>Host</b>	Rabbit
<b>Gene ID</b>	1999
<b>Gene Symbol</b>	ELF3
<b>Species</b>	Human
<b>Reactivity Notes</b>	Human. Others species have not been tested.
<b>Specificity/Sensitivity</b>	This recognizes both isoforms of ESE-1.
<b>Immunogen</b>	N-terminal sequence and C-terminal sequence of the human ESE-1 protein

<b>Product Application Details</b>	
<b>Applications</b>	Western Blot, Immunocytochemistry/ Immunofluorescence
<b>Recommended Dilutions</b>	Western Blot 1:500, Immunocytochemistry/ Immunofluorescence
<b>Application Notes</b>	For Western Blotting, use at a dilution of 1:500 (ECL). Use in Immunocytochemistry/immunofluorescence reported in scientific literature (PMID: 21660457)

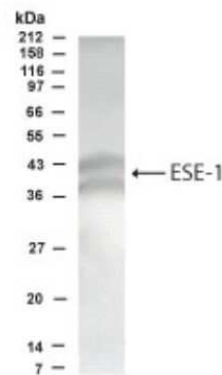


## Images

Western Blot: ESE1 Antibody [NB600-212] - WB detection of ESE1 in T84 colon carcinoma cells with NB600-212 antibody at a dilution of 1:500. Please note that this antibody detects both isoforms of ESE1 with expected molecular weight of 41.4 kDa and 39.3 kDa.



Western Blot: ESE1 Antibody [NB600-212] - Western blot analysis of ESE1 in T84 colon carcinoma cells using NB600-212 at 1:500 dilution. Recognizes both isoforms of ESE1.



## Publications

Marano RJ, Redmond SL. In vitro cultured primary cells from a human utricle explant possesses hair cell like characteristics. *J Mol Histol* 2011-08-01 [PMID: 21660457] (ICC/IF, Human)

Ghassemifar R, Redmond S, Zainuddin, Chirila TV. Advancing towards a tissue-engineered tympanic membrane: silk fibroin as a substratum for growing human eardrum keratinocytes. *J Biomater Appl*;24(7):591-606. 2010-03-01 [PMID: 20308345] (ICC/IF, Human)



### **Novus Biologicals USA**

10730 E. Briarwood Avenue  
Centennial, CO 80112  
USA  
Phone: 303.730.1950  
Toll Free: 1.888.506.6887  
Fax: 303.730.1966  
nb-customerservice@bio-techne.com

### **Bio-Techne Canada**

21 Canmotor Ave  
Toronto, ON M8Z 4E6  
Canada  
Phone: 905.827.6400  
Toll Free: 855.668.8722  
Fax: 905.827.6402  
canada.inquires@bio-techne.com

### **Bio-Techne Ltd**

19 Barton Lane  
Abingdon Science Park  
Abingdon, OX14 3NB, United Kingdom  
Phone: (44) (0) 1235 529449  
Free Phone: 0800 37 34 15  
Fax: (44) (0) 1235 533420  
info.EMEA@bio-techne.com

### **General Contact Information**

www.novusbio.com  
Technical Support: nb-technical@bio-techne.com  
Orders: nb-customerservice@bio-techne.com  
General: novus@novusbio.com

### **Products Related to NB600-212**

---

NBP2-33376H	Blue Marker Antibody (6F4-F6) [HRP]
HAF008	Goat anti-Rabbit IgG Secondary Antibody [HRP]
NB7160	Goat anti-Rabbit IgG (H+L) Secondary Antibody [HRP]
NBP2-24891	Rabbit IgG Isotype Control

---

### **Limitations**

This product is for research use only and is not approved for use in humans or in clinical diagnosis. Primary Antibodies are guaranteed for 1 year from date of receipt.

For more information on our 100% guarantee, please visit [www.novusbio.com/guarantee](http://www.novusbio.com/guarantee)

Earn gift cards/discounts by submitting a review: [www.novusbio.com/reviews/submit/NB600-212](http://www.novusbio.com/reviews/submit/NB600-212)

Earn gift cards/discounts by submitting a publication using this product:  
[www.novusbio.com/publications](http://www.novusbio.com/publications)

