

Product Datasheet

E2F-1 Antibody (18E10) - Azide and BSA Free NB600-209

Unit Size: 100 ul

Store at 4C short term. Aliquot and store at -20C long term. Avoid freeze-thaw cycles.

www.novusbio.com



technical@novusbio.com

Publications: 2

Protocols, Publications, Related Products, Reviews, Research Tools and Images at:
www.novusbio.com/NB600-209

Updated 9/9/2025 v.20.1

Earn rewards for product
reviews and publications.

Submit a publication at www.novusbio.com/publications

Submit a review at www.novusbio.com/reviews/destination/NB600-209



NB600-209

E2F-1 Antibody (18E10) - Azide and BSA Free

Product Information	
Unit Size	100 ul
Concentration	Concentrations vary lot to lot. See vial label for concentration. If unlisted please contact technical services.
Storage	Store at 4C short term. Aliquot and store at -20C long term. Avoid freeze-thaw cycles.
Clonality	Monoclonal
Clone	18E10
Preservative	No Preservative
Isotype	IgG1
Purity	Protein G purified
Buffer	PBS
Target Molecular Weight	47 kDa

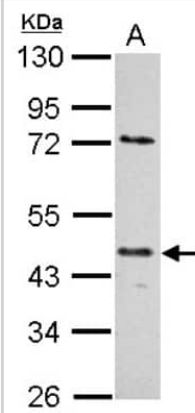
Product Description	
Description	Novus Biologicals Mouse E2F-1 Antibody (18E10) - Azide and BSA Free (NB600-209) is a monoclonal antibody validated for use in IHC, WB, ICC/IF and IP. Anti-E2F-1 Antibody: Cited in 2 publications. All Novus Biologicals antibodies are covered by our 100% guarantee.
Host	Mouse
Gene ID	1869
Gene Symbol	E2F1
Species	Human
Immunogen	The region encoding the DNA binding domain (amino acids 244-264) of E2F-1 expressed in E. coli.

Product Application Details	
Applications	Western Blot, Immunocytochemistry/ Immunofluorescence, Immunohistochemistry, Immunoprecipitation
Recommended Dilutions	Western Blot, Immunohistochemistry 1:10 - 1:500, Immunocytochemistry/ Immunofluorescence, Immunoprecipitation

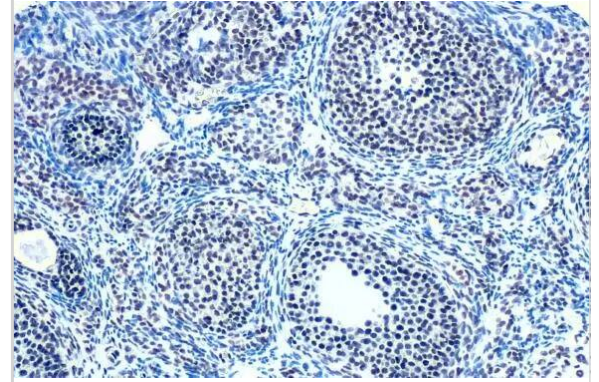


Images

Western Blot: E2F1 Antibody (18E10) [NB600-209] - Sample (30 ug of whole cell lysate) A: 293T 10% SDS PAGE; antibody diluted at 1:1000.



Immunohistochemistry-Paraffin: E2F-1 Antibody (18E10) [NB600-209] - E2F-1 antibody [18E10] detects E2F-1 protein at nucleus by immunohistochemical analysis. Sample: Paraffin-embedded mouse ovary. E2F-1 stained by E2F-1 antibody [18E10] (NB600-209) diluted at 1:200. Antigen Retrieval: Citrate buffer, pH 6.0, 15 min



Publications

Liu X, Clements A, Zhao K et al. Structure of the human Papillomavirus E7 oncoprotein and its mechanism for inactivation of the retinoblastoma tumor suppressor. *J Biol Chem* 2006-01-01 [PMID: 16249186] (IF/IHC, Human)

Malhotra S, Lapointe J, Salari K et al. A tri-marker proliferation index predicts biochemical recurrence after surgery for prostate cancer. *PLoS One* 2011-01-01 [PMID: 21629784] (IF/IHC, Human)



Novus Biologicals USA

10730 E. Briarwood Avenue
Centennial, CO 80112
USA
Phone: 303.730.1950
Toll Free: 1.888.506.6887
Fax: 303.730.1966
nb-customerservice@bio-techne.com

Bio-Techne Canada

21 Canmotor Ave
Toronto, ON M8Z 4E6
Canada
Phone: 905.827.6400
Toll Free: 855.668.8722
Fax: 905.827.6402
canada.inquires@bio-techne.com

Bio-Techne Ltd

19 Barton Lane
Abingdon Science Park
Abingdon, OX14 3NB, United Kingdom
Phone: (44) (0) 1235 529449
Free Phone: 0800 37 34 15
Fax: (44) (0) 1235 533420
info.EMEA@bio-techne.com

General Contact Information

www.novusbio.com
Technical Support: nb-technical@bio-techne.com
Orders: nb-customerservice@bio-techne.com
General: novus@novusbio.com

Products Related to NB600-209

NBP2-33376H	Blue Marker Antibody (6F4-F6) [HRP]
HAF007	Goat anti-Mouse IgG Secondary Antibody [HRP]
NB7539	Goat anti-Mouse IgG (H+L) Secondary Antibody [HRP]
NBP1-97005-0.5mg	Mouse IgG1 Isotype Control (MG1)

Limitations

This product is for research use only and is not approved for use in humans or in clinical diagnosis. Primary Antibodies are guaranteed for 1 year from date of receipt.

For more information on our 100% guarantee, please visit www.novusbio.com/guarantee

Earn gift cards/discounts by submitting a review: www.novusbio.com/reviews/submit/NB600-209

Earn gift cards/discounts by submitting a publication using this product:
www.novusbio.com/publications

