

# Product Datasheet

## alpha Adaptin Antibody (AP6) - BSA Free NB600-1545

Unit Size: 100uL

Store at -20C. Avoid freeze-thaw cycles.

[www.novusbio.com](http://www.novusbio.com)



[technical@novusbio.com](mailto:technical@novusbio.com)

Protocols, Publications, Related Products, Reviews, Research Tools and Images at:  
[www.novusbio.com/NB600-1545](http://www.novusbio.com/NB600-1545)

Updated 9/9/2025 v.20.1

Earn rewards for product  
reviews and publications.

Submit a publication at [www.novusbio.com/publications](http://www.novusbio.com/publications)

Submit a review at [www.novusbio.com/reviews/destination/NB600-1545](http://www.novusbio.com/reviews/destination/NB600-1545)



**NB600-1545**

alpha Adaptin Antibody (AP6) - BSA Free

Product Information	
Unit Size	100uL
Concentration	1 mg/ml
Storage	Store at -20C. Avoid freeze-thaw cycles.
Clonality	Monoclonal
Clone	AP6
Preservative	0.05% Sodium Azide
Isotype	IgG1
Purity	Immunogen affinity purified
Buffer	PBS

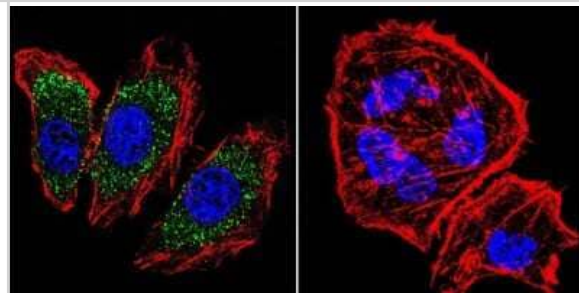
Product Description	
Description	Novus Biologicals Mouse alpha Adaptin Antibody (AP6) - BSA Free (NB600-1545) is a monoclonal antibody validated for use in IHC, WB, Flow, ICC/IF and IP. All Novus Biologicals antibodies are covered by our 100% guarantee.
Host	Mouse
Gene ID	160
Gene Symbol	AP2A1
Species	Human, Mouse, Rat, Bovine, Hamster, Primate
Reactivity Notes	Hamster reactivity reported in scientific literature (PMID: 15923653). Please note that this antibody is reactive to Mouse and derived from the same host, Mouse. Additional Mouse on Mouse blocking steps may be required for IHC and ICC experiments. Please contact Technical Support for more information.
Specificity/Sensitivity	Detects assembly polypeptide 2 (AP2) It recognizes the products of both alpha-adaptin genes, alpha A and alpha C as well as an alternatively spliced isoform of alpha A found in neurons.
Immunogen	Purified adaptors.

Product Application Details	
Applications	Western Blot, Flow Cytometry, Immunocytochemistry/ Immunofluorescence, Immunohistochemistry, Immunoprecipitation, Block/Neutralize
Recommended Dilutions	Western Blot 1:200, Flow Cytometry 1 ug / 10 <sup>6</sup> cells, Immunohistochemistry 1:10 - 1:500, Immunocytochemistry/ Immunofluorescence 1 - 2 ug/ml, Immunoprecipitation 1:10 - 1:500, Block/Neutralize
Application Notes	WB: Detects an approx. 100 kDa doublet representing the two isoforms of alpha-adaptin in rat brain, though alpha C is the dominant form seen. Microinjection of cells with this antibody results in variable blockade of endocytosis.

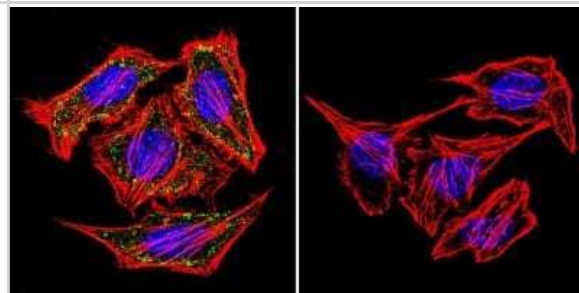


## Images

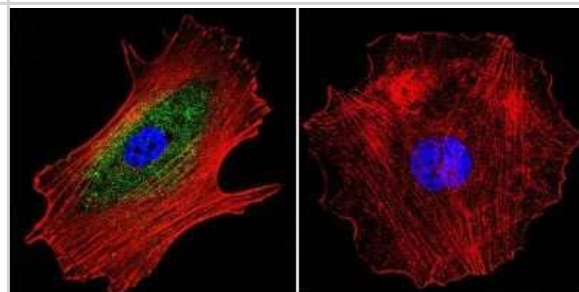
Immunocytochemistry/Immunofluorescence: alpha Adaptin Antibody (AP6) [NB600-1545] - alpha Adaptin (green), F-Actin staining with Phalloidin (red) and nuclei with DAPI (blue) is shown. Cells were grown on chamber slides and fixed with formaldehyde prior to staining. Cells were probed without (control) or with an antibody recognizing alpha Adaptin at a dilution of 1:20 over night at 4C, washed with PBS and incubated with a DyLight-488 conjugated.



Immunocytochemistry/Immunofluorescence: alpha Adaptin Antibody (AP6) [NB600-1545] - alpha Adaptin (green), F-Actin staining with Phalloidin (red) and nuclei with DAPI (blue) is shown. Cells were grown on chamber slides and fixed with formaldehyde prior to staining. Cells were probed without (control) or with an antibody recognizing alpha Adaptin at a dilution of 1:20 over night at 4C, washed with PBS and incubated with a DyLight-488 conjugated.



Immunocytochemistry/Immunofluorescence: alpha Adaptin Antibody (AP6) [NB600-1545] - alpha Adaptin (green), F-Actin staining with Phalloidin (red) and nuclei with DAPI (blue) is shown. Cells were grown on chamber slides and fixed with formaldehyde prior to staining. Cells were probed without (control) or with an antibody recognizing alpha Adaptin at a dilution of 1:20 over night at 4C, washed with PBS and incubated with a DyLight-488 conjugated.





### **Novus Biologicals USA**

10730 E. Briarwood Avenue  
Centennial, CO 80112  
USA  
Phone: 303.730.1950  
Toll Free: 1.888.506.6887  
Fax: 303.730.1966  
nb-customerservice@bio-techne.com

### **Bio-Techne Canada**

21 Canmotor Ave  
Toronto, ON M8Z 4E6  
Canada  
Phone: 905.827.6400  
Toll Free: 855.668.8722  
Fax: 905.827.6402  
canada.inquires@bio-techne.com

### **Bio-Techne Ltd**

19 Barton Lane  
Abingdon Science Park  
Abingdon, OX14 3NB, United Kingdom  
Phone: (44) (0) 1235 529449  
Free Phone: 0800 37 34 15  
Fax: (44) (0) 1235 533420  
info.EMEA@bio-techne.com

### **General Contact Information**

www.novusbio.com  
Technical Support: nb-technical@bio-techne.com  
Orders: nb-customerservice@bio-techne.com  
General: novus@novusbio.com

### **Products Related to NB600-1545**

---

NBP2-33376H	Blue Marker Antibody (6F4-F6) [HRP]
HAF007	Goat anti-Mouse IgG Secondary Antibody [HRP]
NB7539	Goat anti-Mouse IgG (H+L) Secondary Antibody [HRP]
NBP1-97005-0.5mg	Mouse IgG1 Isotype Control (MG1)

---

### **Limitations**

This product is for research use only and is not approved for use in humans or in clinical diagnosis. Primary Antibodies are guaranteed for 1 year from date of receipt.

For more information on our 100% guarantee, please visit [www.novusbio.com/guarantee](http://www.novusbio.com/guarantee)

Earn gift cards/discounts by submitting a review: [www.novusbio.com/reviews/submit/NB600-1545](http://www.novusbio.com/reviews/submit/NB600-1545)

Earn gift cards/discounts by submitting a publication using this product:  
[www.novusbio.com/publications](http://www.novusbio.com/publications)

