

Product Datasheet

MDM2/HDM2 Antibody (HDM2-323) - BSA Free NB600-1312

Unit Size: 0.1 ml

Store at 4C short term. Aliquot and store at -20C long term. Avoid freeze-thaw cycles.

www.novusbio.com



technical@novusbio.com

Protocols, Publications, Related Products, Reviews, Research Tools and Images at:
www.novusbio.com/NB600-1312

Updated 9/9/2025 v.20.1

Earn rewards for product
reviews and publications.

Submit a publication at www.novusbio.com/publications

Submit a review at www.novusbio.com/reviews/destination/NB600-1312



NB600-1312

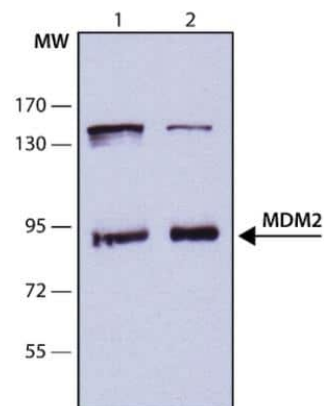
MDM2/HDM2 Antibody (HDM2-323) - BSA Free

Product Information	
Unit Size	0.1 ml
Concentration	2.0 mg/ml
Storage	Store at 4C short term. Aliquot and store at -20C long term. Avoid freeze-thaw cycles.
Clonality	Monoclonal
Clone	HDM2-323
Preservative	0.09% Sodium Azide
Isotype	IgG2a
Purity	Protein A or G purified
Buffer	10mM PBS (pH 7.4)
Product Description	
Description	Novus Biologicals Mouse MDM2/HDM2 Antibody (HDM2-323) - BSA Free (NB600-1312) is a monoclonal antibody validated for use in WB and ELISA. All Novus Biologicals antibodies are covered by our 100% guarantee.
Host	Mouse
Gene ID	4193
Gene Symbol	MDM2
Species	Human, Mouse
Reactivity Notes	Please note that this antibody is reactive to Mouse and derived from the same host, Mouse. Additional Mouse on Mouse blocking steps may be required for IHC and ICC experiments. Please contact Technical Support for more information.
Specificity/Sensitivity	MDM2 (HDM2-323)
Immunogen	Synthetic peptide conjugated to KLH, corresponding to amino acids 389-402 of Human MDM2.
Product Application Details	
Applications	Western Blot, ELISA
Recommended Dilutions	Western Blot 1-2 ug/ml, ELISA 1:100-1:2000
Application Notes	WB: Detects a band of approximately 90 kDa. Not tested in other applications. Optimal dilutions/concentrations should be determined by the end user.



Images

Western Blot: MDM2/HDM2 Antibody (HDM2-323) [NB600-1312] - Whole extracts of HEK-293 cells overexpressing human (lane 1) or mouse (lane 2) MDM2 were separated on SDS-PAGE and probed with 2 ug/mL Monoclonal Anti-MDM2 Clone: HDM2-323. The antibody was developed using Goat Anti-Mouse IgG-Peroxidase and a chemiluminescent substrate.





Novus Biologicals USA

10730 E. Briarwood Avenue
Centennial, CO 80112
USA
Phone: 303.730.1950
Toll Free: 1.888.506.6887
Fax: 303.730.1966
nb-customerservice@bio-techne.com

Bio-Techne Canada

21 Canmotor Ave
Toronto, ON M8Z 4E6
Canada
Phone: 905.827.6400
Toll Free: 855.668.8722
Fax: 905.827.6402
canada.inquires@bio-techne.com

Bio-Techne Ltd

19 Barton Lane
Abingdon Science Park
Abingdon, OX14 3NB, United Kingdom
Phone: (44) (0) 1235 529449
Free Phone: 0800 37 34 15
Fax: (44) (0) 1235 533420
info.EMEA@bio-techne.com

General Contact Information

www.novusbio.com
Technical Support: nb-technical@bio-techne.com
Orders: nb-customerservice@bio-techne.com
General: novus@novusbio.com

Products Related to NB600-1312

NBP2-33376H	Blue Marker Antibody (6F4-F6) [HRP]
HAF007	Goat anti-Mouse IgG Secondary Antibody [HRP]
NB7539	Goat anti-Mouse IgG (H+L) Secondary Antibody [HRP]
NBP1-96778	Mouse IgG2a Isotype Control (M2A)

Limitations

This product is for research use only and is not approved for use in humans or in clinical diagnosis. Primary Antibodies are guaranteed for 1 year from date of receipt.

For more information on our 100% guarantee, please visit www.novusbio.com/guarantee

Earn gift cards/discounts by submitting a review: www.novusbio.com/reviews/submit/NB600-1312

Earn gift cards/discounts by submitting a publication using this product:
www.novusbio.com/publications

