

# Product Datasheet

## Protein Disulfide Isomerase/P4HB Antibody (RL77) NB600-1164

Unit Size: 100 uL

Store at -20C. Avoid freeze-thaw cycles.

[www.novusbio.com](http://www.novusbio.com)



[technical@novusbio.com](mailto:technical@novusbio.com)

### Publications: 3

Protocols, Publications, Related Products, Reviews, Research Tools and Images at:  
[www.novusbio.com/NB600-1164](http://www.novusbio.com/NB600-1164)

Updated 9/9/2025 v.20.1

Earn rewards for product  
reviews and publications.

Submit a publication at [www.novusbio.com/publications](http://www.novusbio.com/publications)

Submit a review at [www.novusbio.com/reviews/destination/NB600-1164](http://www.novusbio.com/reviews/destination/NB600-1164)

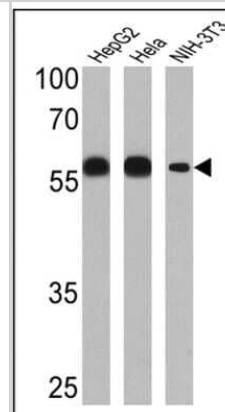


**NB600-1164****Protein Disulfide Isomerase/P4HB Antibody (RL77)**

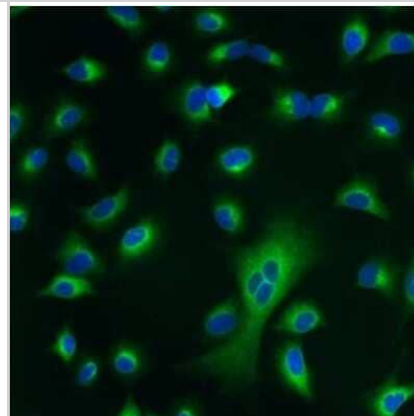
<b>Product Information</b>	
<b>Unit Size</b>	100 uL
<b>Concentration</b>	This product is unpurified. The exact concentration of antibody is not quantifiable.
<b>Storage</b>	Store at -20C. Avoid freeze-thaw cycles.
<b>Clonality</b>	Monoclonal
<b>Clone</b>	RL77
<b>Preservative</b>	0.05% Sodium Azide
<b>Isotype</b>	IgG2b
<b>Purity</b>	Unpurified
<b>Buffer</b>	Ascites diluted with PBS
<b>Target Molecular Weight</b>	58 kDa
<b>Product Description</b>	
<b>Description</b>	Novus Biologicals Mouse Protein Disulfide Isomerase/P4HB Antibody (RL77) (NB600-1164) is a monoclonal antibody validated for use in IHC, WB, Flow, ICC/IF and IP. Anti-Protein Disulfide Isomerase/P4HB Antibody: Cited in 3 publications. All Novus Biologicals antibodies are covered by our 100% guarantee.
<b>Host</b>	Mouse
<b>Gene ID</b>	5034
<b>Gene Symbol</b>	P4HB
<b>Species</b>	Human, Mouse, Rat, Porcine, Hamster, Xenopus
<b>Reactivity Notes</b>	Use in Human reported in scientific literature (PMID:33806982).
<b>Marker</b>	Endoplasmic Reticulum Marker
<b>Specificity/Sensitivity</b>	NB600-1164 detects Protein Disulfide Isomerase/P4HB from human, mouse, rat, porcine, xenopus liver tissues as well as hamster (CHO) cells.
<b>Immunogen</b>	Purified rat Protein Disulfide Isomerase/P4HB protein.
<b>Product Application Details</b>	
<b>Applications</b>	Western Blot, Immunohistochemistry-Paraffin, Flow Cytometry, Immunocytochemistry/ Immunofluorescence, Immunohistochemistry, Immunoprecipitation
<b>Recommended Dilutions</b>	Western Blot 1:200 - 1:2000, Flow Cytometry 1:10 - 1:1000, Immunohistochemistry 1:100, Immunocytochemistry/ Immunofluorescence 1:10 - 1:500, Immunoprecipitation 1:10 - 1:500, Immunohistochemistry-Paraffin 1:100
<b>Application Notes</b>	WB usage was reported in scientific literature (PMID: 21292774). WB: Detects an approx. 59 kDa representing Protein Disulfide Isomerase/P4HB from rat liver extract or a slightly higher protein at 61 kDa representing Protein Disulfide Isomerase/P4HB from human liver extract. IHC: Staining of Protein Disulfide Isomerase/P4HB in rat intestine with ab5484 yields a pattern consistent with cytoplasmic staining. IP: ab5484 has been shown to inhibit the activity of Protein Disulfide Isomerase/P4HB in vitro.

## Images

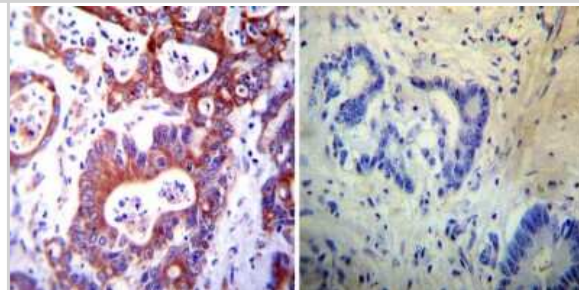
Western Blot: Protein Disulfide Isomerase/P4HB Antibody (RL77) [NB600-1164] - Analysis of 25 ug of HepG2 (Lane 1), HeLa (Lane 2) and NIH-3T3 (Lane 3) cell lysates.



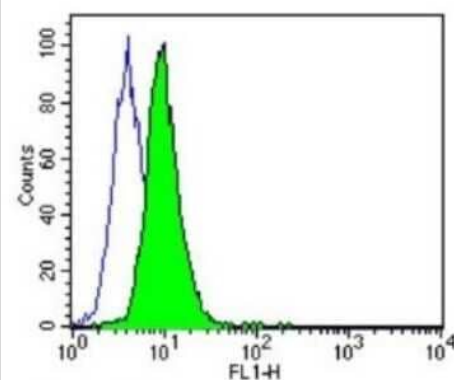
Immunocytochemistry/Immunofluorescence: Protein Disulfide Isomerase/P4HB Antibody (RL77) [NB600-1164] - Analysis of Protein Disulfide Isomerase/P4HB using monoclonal antibody shows staining in A549 Cells.



Immunohistochemistry-Paraffin: Protein Disulfide Isomerase/P4HB Antibody (RL77) [NB600-1164] - Both normal and cancer biopsies of deparaffinized Human colon carcinoma tissues.

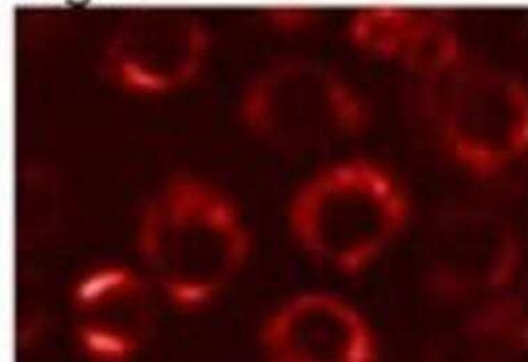


Flow Cytometry: Protein Disulfide Isomerase/P4HB Antibody (RL77) [NB600-1164] - Analysis of 3T3 cells compared to an isotype control (blue).

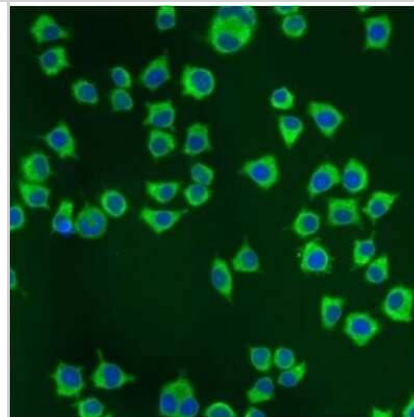


Immunocytochemistry/Immunofluorescence: Protein Disulfide Isomerase/P4HB Antibody (RL77) [NB600-1164] - Staining of rat epithelial cells.

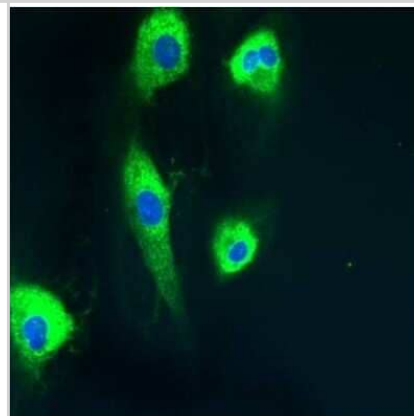
Fig. 1



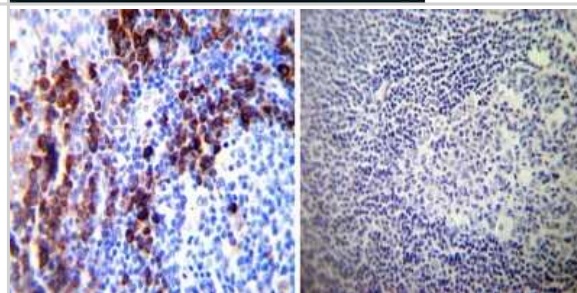
Immunocytochemistry/Immunofluorescence: Protein Disulfide Isomerase/P4HB Antibody (RL77) [NB600-1164] - Analysis of NS-1 Cells.



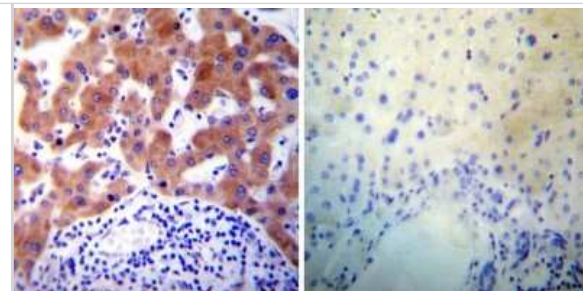
Immunocytochemistry/Immunofluorescence: Protein Disulfide Isomerase/P4HB Antibody (RL77) [NB600-1164] - Analysis shows staining in HMVEC Cells.



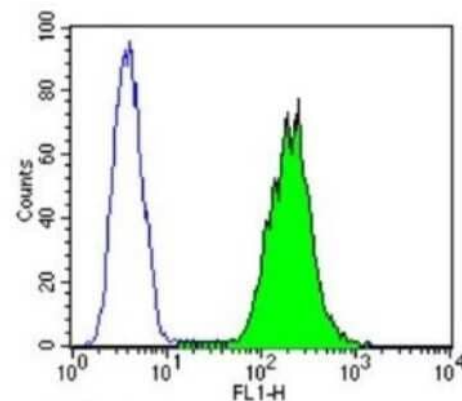
Immunohistochemistry-Paraffin: Protein Disulfide Isomerase/P4HB Antibody (RL77) [NB600-1164] - Normal deparaffinized Human tonsil tissue tissues.



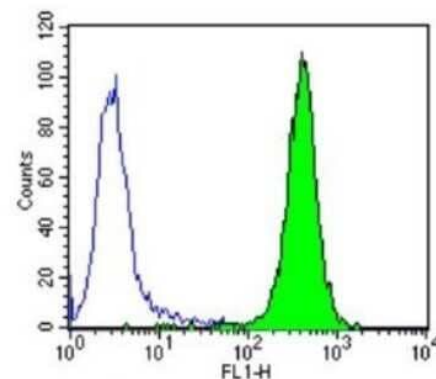
Immunohistochemistry-Paraffin: Protein Disulfide Isomerase/P4HB Antibody (RL77) [NB600-1164] - Both normal and cancer biopsies of deparaffinized Human liver tissues.



Flow Cytometry: Protein Disulfide Isomerase/P4HB Antibody (RL77) [NB600-1164] - Analysis of K562 cells compared to an isotype control (blue).



Flow Cytometry: Protein Disulfide Isomerase/P4HB Antibody (RL77) [NB600-1164] - Analysis of Hela cells compared to an isotype control (blue).



## Publications

Gaspar R, Sage T, Little G et al. Protein Disulphide Isomerase and NADPH Oxidase 1 Cooperate to Control Platelet Function and Are Associated with Cardiometabolic Disease Risk Factors Antioxidants 2021-03-23 [PMID: 33806982] (ICC/IF, Human)

Lee S, Min Kim S, Dotimas J et al. Thioredoxin-interacting protein regulates protein disulfide isomerases and endoplasmic reticulum stress. EMBO Mol Med. 2014-05-19 [PMID: 24843047] (WB, Human)

Jun HS, Lee YM, Song K et al. G-CSF improves murine G6PC3-deficient neutrophil function by modulating apoptosis and energy homeostasis Blood 2011-04-07 [PMID: 21292774] (WB, Mouse)



### **Novus Biologicals USA**

10730 E. Briarwood Avenue  
Centennial, CO 80112  
USA  
Phone: 303.730.1950  
Toll Free: 1.888.506.6887  
Fax: 303.730.1966  
nb-customerservice@bio-techne.com

### **Bio-Techne Canada**

21 Canmotor Ave  
Toronto, ON M8Z 4E6  
Canada  
Phone: 905.827.6400  
Toll Free: 855.668.8722  
Fax: 905.827.6402  
canada.inquires@bio-techne.com

### **Bio-Techne Ltd**

19 Barton Lane  
Abingdon Science Park  
Abingdon, OX14 3NB, United Kingdom  
Phone: (44) (0) 1235 529449  
Free Phone: 0800 37 34 15  
Fax: (44) (0) 1235 533420  
info.EMEA@bio-techne.com

### **General Contact Information**

www.novusbio.com  
Technical Support: nb-technical@bio-techne.com  
Orders: nb-customerservice@bio-techne.com  
General: novus@novusbio.com

### **Products Related to NB600-1164**

---

NBP2-33376H	Blue Marker Antibody (6F4-F6) [HRP]
HAF007	Goat anti-Mouse IgG Secondary Antibody [HRP]
NB7539	Goat anti-Mouse IgG (H+L) Secondary Antibody [HRP]
NBP2-27231	Mouse IgG2b Isotype Control (MPC-11)

---

### **Limitations**

This product is for research use only and is not approved for use in humans or in clinical diagnosis. Primary Antibodies are guaranteed for 1 year from date of receipt.

For more information on our 100% guarantee, please visit [www.novusbio.com/guarantee](http://www.novusbio.com/guarantee)

Earn gift cards/discounts by submitting a review: [www.novusbio.com/reviews/submit/NB600-1164](http://www.novusbio.com/reviews/submit/NB600-1164)

Earn gift cards/discounts by submitting a publication using this product:  
[www.novusbio.com/publications](http://www.novusbio.com/publications)

