

# Product Datasheet

## NPM1 Antibody (FC82291)

### NB600-1030

Unit Size: 0.1 ml

Store at -20C. Avoid freeze-thaw cycles.

[www.novusbio.com](http://www.novusbio.com)



[technical@novusbio.com](mailto:technical@novusbio.com)

#### Publications: 6

Protocols, Publications, Related Products, Reviews, Research Tools and Images at:  
[www.novusbio.com/NB600-1030](http://www.novusbio.com/NB600-1030)

Updated 9/9/2025 v.20.1

Earn rewards for product  
reviews and publications.

Submit a publication at [www.novusbio.com/publications](http://www.novusbio.com/publications)

Submit a review at [www.novusbio.com/reviews/destination/NB600-1030](http://www.novusbio.com/reviews/destination/NB600-1030)



**NB600-1030**

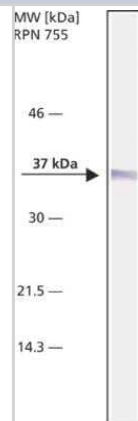
NPM1 Antibody (FC82291)

| <b>Product Information</b>         |   |
|------------------------------------|---|
| <b>Unit Size</b>                   | 0.1 ml  |
| <b>Concentration</b>               | 0.5 mg/ml   |
| <b>Storage</b>                     | Store at -20C. Avoid freeze-thaw cycles.  |
| <b>Clonality</b>                   | Monoclonal  |
| <b>Clone</b>                       | FC82291   |
| <b>Preservative</b>                | 0.09% Sodium Azide  |
| <b>Isotype</b>                     | IgG1  |
| <b>Purity</b>                      | Protein A or G purified   |
| <b>Buffer</b>                      | 10mM PBS (pH 7.4) and 1.0% BSA  |
| <b>Product Description</b>         |   |
| <b>Description</b>                 | Novus Biologicals Mouse NPM1 Antibody (FC82291) (NB600-1030) is a monoclonal antibody validated for use in WB, ELISA and ICC/IF. Anti-NPM1 Antibody: Cited in 4 publications. All Novus Biologicals antibodies are covered by our 100% guarantee.     |
| <b>Host</b>                        | Mouse   |
| <b>Gene ID</b>                     | 4869  |
| <b>Gene Symbol</b>                 | NPM1  |
| <b>Species</b>                     | Human, Mouse, Rat, Bovine, Canine, Donkey, Hamster, Monkey  |
| <b>Reactivity Notes</b>            | kangaroo rat. Please note that this antibody is reactive to Mouse and derived from the same host, Mouse. Additional Mouse on Mouse blocking steps may be required for IHC and ICC experiments. Please contact Technical Support for more information. |
| <b>Specificity/Sensitivity</b>     | Detects both the phosphorylated and the unphosphorylated B23 molecule.  |
| <b>Immunogen</b>                   | rat B23 (nucleophosmin, NPM, numatrin). UniProt accession no. P06748.   |
| <b>Product Application Details</b> |   |
| <b>Applications</b>                | Western Blot, ELISA, Immunoblotting, Immunocytochemistry/ Immunofluorescence  |
| <b>Recommended Dilutions</b>       | Western Blot 2-4 ug/ml, ELISA, Immunocytochemistry/ Immunofluorescence, Immunoblotting 0.5ug/ml   |
| <b>Application Notes</b>           | WB: Detects a band of approximately 37 kDa. Optimal dilutions/concentrations should be determined by the end user.  |

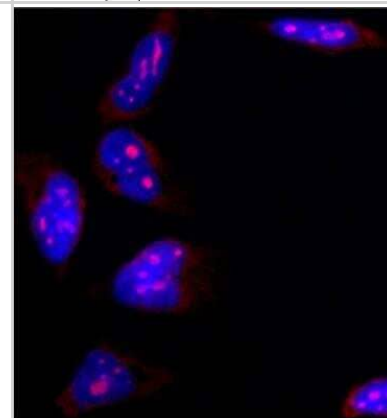


## Images

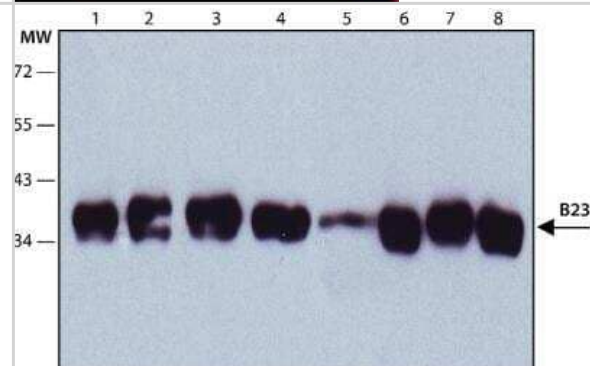
Western Blot: Nucleophosmin Antibody (FC82291) [NB600-1030] - Monoclonal Anti-B23 antibody produced in mouse



Immunofluorescence: NPM1 Antibody (FC82291) [NB600-1030] - HeLa cells were fixed and permeabilized with methanol followed by methanol:acetone. Fixed cells were stained with 1:500. Cells were counterstained with DAPI (blue) to stain nuclei.



Immunoblotting: NPM1 Antibody (FC82291) [NB600-1030] - Cell line lysates were separated on SDS-PAGE and probed with 0.5 ug/mL Monoclonal Anti-B23 Clone: FC82291 Lanes 1. HeLa 2. JURKAT 3. COS7 4. NIH-3T3 5. RAT2 6. CHO 7. MDBK 8. MDCK



## Publications

Gupta S, Bersaglieri C, Bär D et al. The nucleolar granular component mediates genome-nucleolus interactions and establishes their repressive chromatin states. *Molecular cell* 2025-05-17 [PMID: 40412390]

Sun YM, Zhu SX, Chen XT, Pan Q et al. lncRNAs maintain the functional phase state of nucleolar prion-like protein to facilitate rRNA processing *Mol Cell* 2024-11-23 [PMID: 39579766]

Wang XQD, Fan D, Han Q et al. Mutant NPM1 Hijacks Transcriptional Hubs to Maintain Pathogenic Gene Programs in Acute Myeloid Leukemia *Cancer discovery* 2023-03-01 [PMID: 36455589] (ICC/IF)

Details:  
Cut & Run

Schueder F, Rivera-Molina F, Su M et al. Unraveling cellular complexity with unlimited multiplexed super-resolution imaging *bioRxiv* 2023-05-18

Luo H, Zhu G, Eshelman MA et al. HOTTIP-dependent R-loop formation regulates CTCF boundary activity and TAD integrity in leukemia *Molecular cell* 2022-02-17 [PMID: 35180428]

IbANEZ-Cabellos JS, Seco-Cervera M, Picher-Latorre C et al. Acute depletion of telomerase components DKC1 and NOP10 induces oxidative stress and disrupts ribosomal biogenesis via NPM1 and activation of the P53 pathway *Biochimica et biophysica acta. Molecular cell research* 2020-12-01 [PMID: 32910990] (ICC/IF, Human)





### **Novus Biologicals USA**

10730 E. Briarwood Avenue  
Centennial, CO 80112  
USA  
Phone: 303.730.1950  
Toll Free: 1.888.506.6887  
Fax: 303.730.1966  
nb-customerservice@bio-techne.com

### **Bio-Techne Canada**

21 Canmotor Ave  
Toronto, ON M8Z 4E6  
Canada  
Phone: 905.827.6400  
Toll Free: 855.668.8722  
Fax: 905.827.6402  
canada.inquires@bio-techne.com

### **Bio-Techne Ltd**

19 Barton Lane  
Abingdon Science Park  
Abingdon, OX14 3NB, United Kingdom  
Phone: (44) (0) 1235 529449  
Free Phone: 0800 37 34 15  
Fax: (44) (0) 1235 533420  
info.EMEA@bio-techne.com

### **General Contact Information**

www.novusbio.com  
Technical Support: nb-technical@bio-techne.com  
Orders: nb-customerservice@bio-techne.com  
General: novus@novusbio.com

### **Products Related to NB600-1030**

---

|                  |  |
|------------------|--|
| NBL1-13748       | NPM1 Overexpression Lysate                         |
| NBP2-33376H      | Blue Marker Antibody (6F4-F6) [HRP]                |
| HAF007           | Goat anti-Mouse IgG Secondary Antibody [HRP]       |
| NB7539           | Goat anti-Mouse IgG (H+L) Secondary Antibody [HRP] |
| NBP1-97005-0.5mg | Mouse IgG1 Isotype Control (MG1)                   |

---

### **Limitations**

This product is for research use only and is not approved for use in humans or in clinical diagnosis. Primary Antibodies are guaranteed for 1 year from date of receipt.

For more information on our 100% guarantee, please visit [www.novusbio.com/guarantee](http://www.novusbio.com/guarantee)

Earn gift cards/discounts by submitting a review: [www.novusbio.com/reviews/submit/NB600-1030](http://www.novusbio.com/reviews/submit/NB600-1030)

Earn gift cards/discounts by submitting a publication using this product:  
[www.novusbio.com/publications](http://www.novusbio.com/publications)

