

Product Datasheet

PLGF Antibody - Azide and BSA Free NB600-1012

Unit Size: 0.2 mg

Store at 4C short term. Aliquot and store at -20C long term. Avoid freeze-thaw cycles.

www.novusbio.com



technical@novusbio.com

Publications: 1

Protocols, Publications, Related Products, Reviews, Research Tools and Images at:
www.novusbio.com/NB600-1012

Updated 9/9/2025 v.20.1

Earn rewards for product
reviews and publications.

Submit a publication at www.novusbio.com/publications

Submit a review at www.novusbio.com/reviews/destination/NB600-1012



NB600-1012

PLGF Antibody - Azide and BSA Free

Product Information	
Unit Size	0.2 mg
Concentration	LYOPH mg/ml
Storage	Store at 4C short term. Aliquot and store at -20C long term. Avoid freeze-thaw cycles.
Clonality	Polyclonal
Preservative	No Preservative
Reconstitution Instructions	Centrifuge vial prior to opening. Reconstitute in sterile water to a concentration of 0.1-1.0 mg/ml. Please note the sample size of this product will be provided in reconstituted liquid form.
Isotype	IgG
Purity	Protein A purified
Buffer	PBS

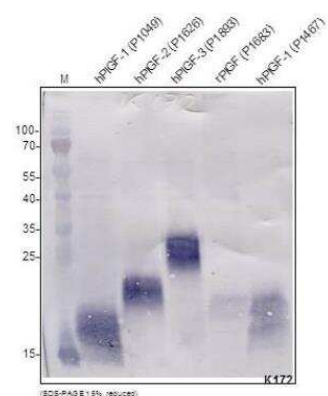
Product Description	
Description	Novus Biologicals Rabbit PLGF Antibody - Azide and BSA Free (NB600-1012) is a polyclonal antibody validated for use in WB, ELISA and ICC/IF. Anti-PLGF Antibody: Cited in 1 publication. All Novus Biologicals antibodies are covered by our 100% guarantee.
Host	Rabbit
Gene ID	5228
Gene Symbol	PGF
Species	Human
Specificity/Sensitivity	The will react with all human PLGF isoforms.
Immunogen	N-terminal peptide (20aa) of native human PIGF

Product Application Details	
Applications	Western Blot, ELISA, Immunocytochemistry/ Immunofluorescence
Recommended Dilutions	Western Blot 2-10 ug/ml, ELISA 1-5 ug/ml, Immunocytochemistry/ Immunofluorescence 5-25ug/ml

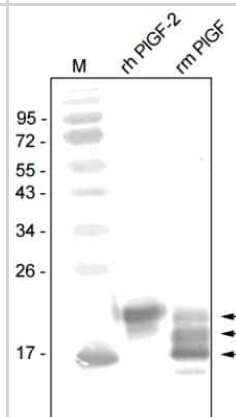


Images

Western Blot: PLGF Antibody [NB600-1012] - Western Blot analysis of human PLGF isoforms with a polyclonal antibody directed against an N-terminal peptide of native human PLGF. There is a weak cross reactivity with rat PLGF.



Western Blot: PIGF Antibody [NB600-1012] - Analysis of human PIGF-2 with a polyclonal antibody directed against a N-terminal peptide of native human PIGF. There is a strong cross reactivity with mouse PIGF.



Publications

Janer J, ersson S, Haglund C et al. Placental Growth Factor Vascular Endothelial Growth Factor Receptor-2 in Human Lung Development. *Pediatrics*;122(2):340-346. 2008-01-01 [PMID: 18676552]



Novus Biologicals USA

10730 E. Briarwood Avenue
Centennial, CO 80112
USA
Phone: 303.730.1950
Toll Free: 1.888.506.6887
Fax: 303.730.1966
nb-customerservice@bio-techne.com

Bio-Techne Canada

21 Canmotor Ave
Toronto, ON M8Z 4E6
Canada
Phone: 905.827.6400
Toll Free: 855.668.8722
Fax: 905.827.6402
canada.inquires@bio-techne.com

Bio-Techne Ltd

19 Barton Lane
Abingdon Science Park
Abingdon, OX14 3NB, United Kingdom
Phone: (44) (0) 1235 529449
Free Phone: 0800 37 34 15
Fax: (44) (0) 1235 533420
info.EMEA@bio-techne.com

General Contact Information

www.novusbio.com
Technical Support: nb-technical@bio-techne.com
Orders: nb-customerservice@bio-techne.com
General: novus@novusbio.com

Products Related to NB600-1012

HAF008	Goat anti-Rabbit IgG Secondary Antibody [HRP]
NB7160	Goat anti-Rabbit IgG (H+L) Secondary Antibody [HRP]
NBP2-24891	Rabbit IgG Isotype Control
NBP2-61317-5ug	Recombinant Human PLGF Protein

Limitations

This product is for research use only and is not approved for use in humans or in clinical diagnosis. Primary Antibodies are guaranteed for 1 year from date of receipt.

For more information on our 100% guarantee, please visit www.novusbio.com/guarantee

Earn gift cards/discounts by submitting a review: www.novusbio.com/reviews/submit/NB600-1012

Earn gift cards/discounts by submitting a publication using this product:
www.novusbio.com/publications

