

Product Datasheet

LYVE-1 Antibody - Azide and BSA Free NB600-1008

Unit Size: 0.2 mg

Store at 4C short term. Aliquot and store at -20C long term. Avoid freeze-thaw cycles.

www.novusbio.com



technical@novusbio.com

Reviews: 3 Publications: 37

Protocols, Publications, Related Products, Reviews, Research Tools and Images at:
www.novusbio.com/NB600-1008

Updated 9/9/2025 v.20.1

Earn rewards for product
reviews and publications.

Submit a publication at www.novusbio.com/publications

Submit a review at www.novusbio.com/reviews/destination/NB600-1008



NB600-1008

LYVE-1 Antibody - Azide and BSA Free

Product Information	
Unit Size	0.2 mg
Concentration	LYOPH mg/ml
Storage	Store at 4C short term. Aliquot and store at -20C long term. Avoid freeze-thaw cycles.
Clonality	Polyclonal
Preservative	No Preservative
Reconstitution Instructions	Centrifuge vial prior to opening. Reconstitute in sterile water to a concentration of 0.1-1.0 mg/ml. Please note the sample size of this product will be provided in reconstituted liquid form.
Isotype	IgG
Purity	Protein A purified
Buffer	PBS
Target Molecular Weight	35 kDa

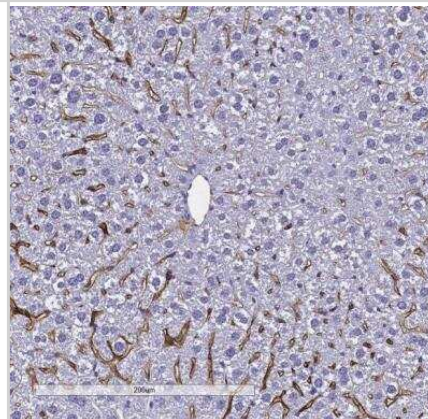
Product Description	
Description	Novus Biologicals Rabbit LYVE-1 Antibody - Azide and BSA Free (NB600-1008) is a polyclonal antibody validated for use in IHC, WB and Flow. Anti-LYVE-1 Antibody: Cited in 36 publications. All Novus Biologicals antibodies are covered by our 100% guarantee.
Host	Rabbit
Gene ID	10894
Gene Symbol	LYVE1
Species	Human, Mouse, Rat
Reactivity Notes	Rat reactivity reported in (PMID: 24363089).
Marker	Lymphatic Vessel Marker
Immunogen	Produced from sera of rabbits immunized with highly pure recombinant mouse soluble LYVE-1 produced in insect cells. The recombinant soluble LYVE-1 consists of amino acid 24 (Ala) to 228 (Gly) and is fused to a C-terminal His-tag (6xHis).

Product Application Details	
Applications	Western Blot, Immunohistochemistry-Paraffin, Flow Cytometry, Immunohistochemistry, Immunohistochemistry-Frozen, CyTOF-ready, Immunohistochemistry Free-Floating
Recommended Dilutions	Western Blot 2-5 ug/mL, Flow Cytometry 3-10 ug/mL, Immunohistochemistry 1:10-1:500, Immunohistochemistry-Paraffin 1:800, Immunohistochemistry-Frozen 1:10-1:500, Immunohistochemistry Free-Floating, CyTOF-ready
Application Notes	Use in IHC free floating reported in scientific literature (PMID: 30514806). Use in ICC/IF reported in scientific publication PMID: 32620870

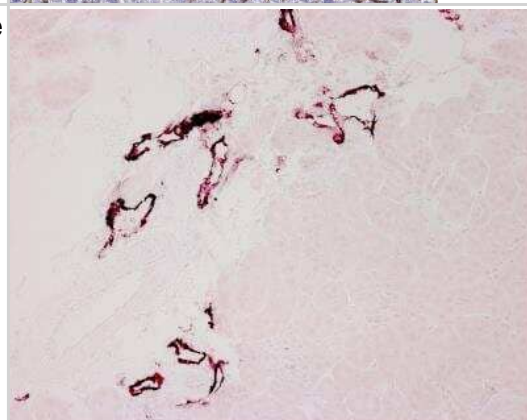


Images

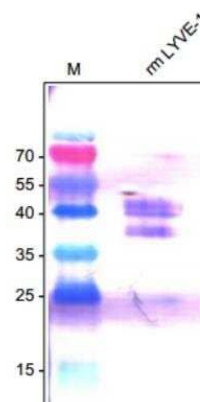
Immunohistochemistry-Paraffin: LYVE-1 Antibody [NB600-1008] - Positive staining for Lyve-1 on FFPE Mouse Liver, 20x magnification. Antibody diluted 1:800. Image from verified customer review.



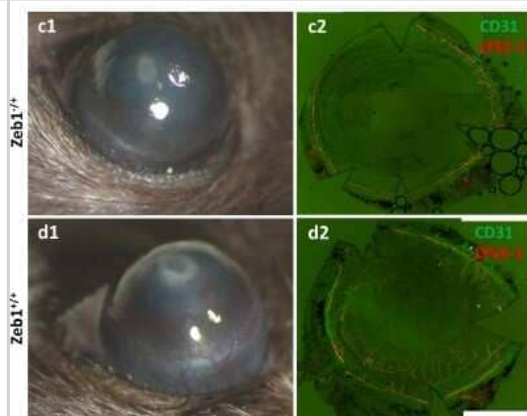
Immunohistochemistry-Paraffin: LYVE-1 Antibody [NB600-1008] - Mouse kidney stained with LYVE-1 antibody. Image from verified customer review.



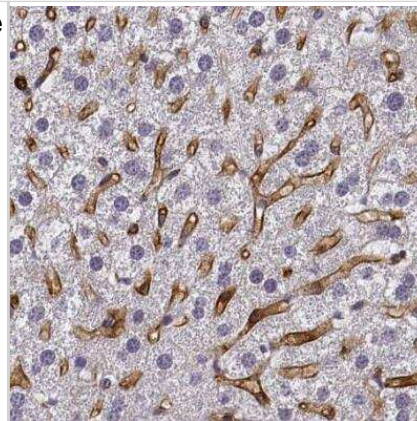
Western Blot: LYVE-1 Antibody [NB600-1008] - Analysis of anti-mouse LYVE-1. Sample was loaded in 15% SDS-polyacrylamide gel under reducing conditions.



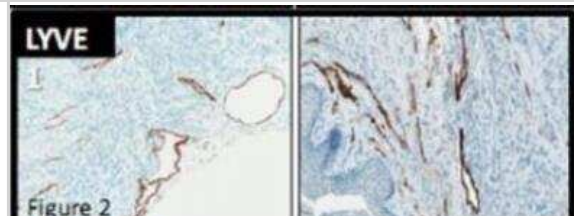
Immunohistochemistry: LYVE-1 Antibody [NB600-1008] - Zeb1-regulation of alkali-induced corneal NV in mice. c1 A representative stereoscopic image of the Zeb1^{-/+} and d1 Zeb1^{+/+} corneas and c2-d2 their whole flat-mount corneas immunostained with the endothelium marker CD31 and the lymphatic vessel marker LYVE-1. *p = 0.05; **p = 0.01. Image collected and cropped by CiteAb from the following publication ([//pubmed.ncbi.nlm.nih.gov/32620870/](https://pubmed.ncbi.nlm.nih.gov/32620870/)) licensed under a CC-BY license.



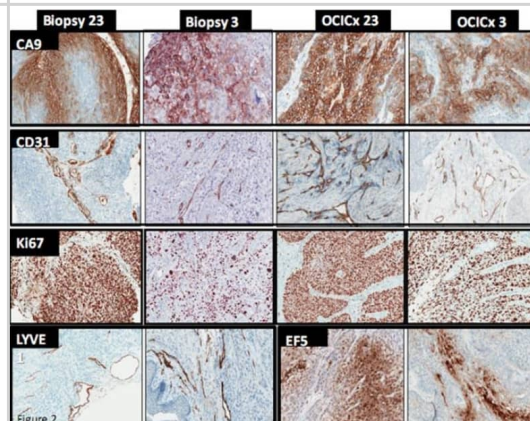
Immunohistochemistry-Paraffin: LYVE-1 Antibody [NB600-1008] - Mouse liver. Antibody at 1:800. Detection by Polymer-HRP. Image from verified customer review.



Immunohistochemistry: LYVE-1 Antibody [NB600-1008] - Hypoxia, blood vessel and proliferation staining. IHC staining in the Biopsy 23 and Biopsy 3 respectively for CA-9, EF5, CD31, Ki67 and LYVE1. 15x Magnification. Image collected and cropped by CiteAb from the following publication (<https://www.mdpi.com/2072-6694/4/3/821>), licensed under a CC-BY license.



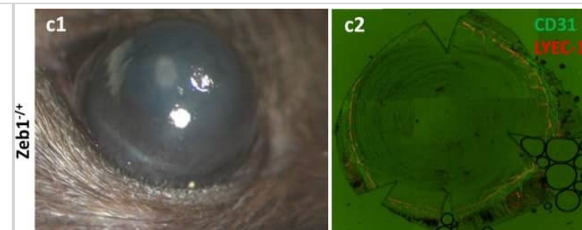
Hypoxia, blood vessel & proliferation staining. IHC staining in the Biopsy 23 & Biopsy 3 respectively for CA-9, EF5, CD31, Ki67 & LYVE1. 15x Magnification. Image collected & cropped by CiteAb from the following publication (<http://www.mdpi.com/2072-6694/4/3/821>), licensed under a CC-BY license. Not internally tested by Novus Biologicals.



Immunohistochemistry: LYVE-1 Antibody [NB600-1008] - Zeb1-regulation of alkali-induced corneal NV in mice. a Reduction of Zeb1 mRNA in the heterozygous Zeb1^{-/+} corneas compared to the homozygous Zeb1^{+/+} corneas. b Significant NV score & vessel size reduction in the Zeb1^{-/+} corneas as compared to their Zeb1^{+/+} siblings. c1 A representative stereoscopic image of the Zeb1^{-/+} & d1 Zeb1^{+/+} corneas & c2-d2 their whole flat-mount corneas immunostained with the endothelium marker CD31 & the lymphatic vessel marker LYVE-1. *p ≤ 0.05; **p ≤ 0.01. Image collected & cropped by CiteAb from the following publication (<https://pubmed.ncbi.nlm.nih.gov/32620870>), licensed under a CC-BY license. Not internally tested by Novus Biologicals.



Immunohistochemistry: LYVE-1 Antibody [NB600-1008] - Zeb1-regulation of alkali-induced corneal NV in mice. a Reduction of Zeb1 mRNA in the heterozygous Zeb1^{-/+} corneas compared to the homozygous Zeb1^{+/+} corneas. b Significant NV score & vessel size reduction in the Zeb1^{-/+} corneas as compared to their Zeb1^{+/+} siblings. c1 A representative stereoscopic image of the Zeb1^{-/+} & d1 Zeb1^{+/+} corneas & c2–d2 their whole flat-mount corneas immunostained with the endothelium marker CD31 & the lymphatic vessel marker LYVE-1. *p ≤ 0.05; **p ≤ 0.01. Image collected & cropped by CiteAb from the following publication (<https://pubmed.ncbi.nlm.nih.gov/32620870>), licensed under a CC-BY license. Not internally tested by Novus Biologicals.



Publications

Pereira ER, Kedrin D, Padera TP. Fate Mapping of Cancer Cells in Metastatic Lymph Nodes Using Photoconvertible Proteins Methods in Molecular Biology 2022-03-02 [PMID: 33704727]

Daneshgaran G, Paik CB, Cooper MN et al. Prevention of postsurgical lymphedema via immediate delivery of sustained-release 9-cis retinoic acid to the lymphadenectomy site Journal of Surgical Oncology 2019-06-25 [PMID: 31240729]

Tian H, Rajbhandari P, Tarolli J, Decker AM et Al. Multimodal mass spectrometry imaging identifies cell-type-specific metabolic and lipidomic variation in the mammalian liver Dev Cell 2024-02-15 [PMID: 38359832]

Nalio Ramos R, Missolo-Koussou Y, Gerber-Ferder Y, Bromley CP et Al. Tissue-resident FOLR2(+) macrophages associate with CD8(+) T cell infiltration in human breast cancer Cell 2022-03-24 [PMID: 35325594]

Parisa Shabani, Vahagn Ohanyan, Ammar Alghadeer, Daniel Gavazzi, Feng Dong, Liya Yin, Christopher Kolz, Lindsay Shockling, Molly Enrick, Ping Zhang, Xin Shi, William Chilian Bone marrow cells contribute to seven different endothelial cell populations in the heart. Basic research in cardiology 2024-07-04 [PMID: 38963562]

Lenti, E;Genovese, L;Bianchessi, S;Maurizio, A;Sain, SB;di Lillo, A;Mattavelli, G;Harel, I;Bernassola, F;Hehlgans, T;Pfeffer, K;Crosti, M;Abrignani, S;Evans, SM;Sitia, G;GuimarAes-Camboa, N;Russo, V;van de Pavert, SA;Garcia-Manteiga, JM;Brendolan, A; Fate mapping and scRNA sequencing reveal origin and diversity of lymph node stromal precursors Immunity [PMID: 35358427]

Elliya Park, Lily Yi Li, Chunsheng He, Azhar Z. Abbasi, Taksim Ahmed, Warren D. Foltz, Regan O'Flaherty, Maham Zain, Robert P. Bonin, Andrew M. Rauth, Paul E. Fraser, Jeffrey T. Henderson, Xiao Yu Wu Brain Penetrating and Disease Site Targeting Manganese Dioxide Polymer Lipid Hybrid Nanoparticles Remodel Microenvironment of Alzheimer's Disease by Regulating Multiple Pathological Pathways Advanced Science 2023-02-19 [PMID: 36808713]

Juan Hao, Panpan Qiang, Lili Fan, Yunzhao Xiong, Yi Chang, Fan Yang, Xiangting Wang, Tatsuo Shimosawa, Shengyu Mu, Qingyou Xu Eplerenone reduces lymphangiogenesis in the contralateral kidneys of UUO rats Scientific Reports 2024-05-01 [PMID: 38693148]

Banerjee, K;Kerzel, T;Bekhus, T;de Souza Ferreira, S;Wallmann, T;Wallerius, M;Landwehr, LS;Agardy, DA;Schauer, N;Malmerfeldt, A;Bergh, J;Bartish, M;Hartman, J;Östman, A;Squadrito, ML;Rolny, C; VEGF-C-expressing TAMs rewire the metastatic fate of breast cancer cells Cell reports 2023-12-01 [PMID: 38041815]

Azizoglu D, Perez K, Zheng S et al. Liver size is predetermined in the neonate by adding lobules at the periphery bioRxiv 2023-10-14 (IHC, Mouse)

Virenque A Characterizing Autophagy in the Cold Preservation of Small Bowel Grafts Thesis 2023-01-01 [PMID: 34876200] (IHC, Mouse)

Banda CH, Shiraishi M, Mitsui K et al. Structural and functional analysis of the newt lymphatic system Scientific reports 2023-04-27 [PMID: 37106059] (Immunohistochemistry-Paraffin)

More publications at <http://www.novusbio.com/NB600-1008>



Novus Biologicals USA

10730 E. Briarwood Avenue
Centennial, CO 80112
USA
Phone: 303.730.1950
Toll Free: 1.888.506.6887
Fax: 303.730.1966
nb-customerservice@bio-techne.com

Bio-Techne Canada

21 Canmotor Ave
Toronto, ON M8Z 4E6
Canada
Phone: 905.827.6400
Toll Free: 855.668.8722
Fax: 905.827.6402
canada.inquires@bio-techne.com

Bio-Techne Ltd

19 Barton Lane
Abingdon Science Park
Abingdon, OX14 3NB, United Kingdom
Phone: (44) (0) 1235 529449
Free Phone: 0800 37 34 15
Fax: (44) (0) 1235 533420
info.EMEA@bio-techne.com

General Contact Information

www.novusbio.com
Technical Support: nb-technical@bio-techne.com
Orders: nb-customerservice@bio-techne.com
General: novus@novusbio.com

Products Related to NB600-1008

NBP2-33376H	Blue Marker Antibody (6F4-F6) [HRP]
HAF008	Goat anti-Rabbit IgG Secondary Antibody [HRP]
NB7160	Goat anti-Rabbit IgG (H+L) Secondary Antibody [HRP]
NBP2-24891	Rabbit IgG Isotype Control

Limitations

This product is for research use only and is not approved for use in humans or in clinical diagnosis. Primary Antibodies are guaranteed for 1 year from date of receipt.

For more information on our 100% guarantee, please visit www.novusbio.com/guarantee

Earn gift cards/discounts by submitting a review: www.novusbio.com/reviews/submit/NB600-1008

Earn gift cards/discounts by submitting a publication using this product:
www.novusbio.com/publications

