

# Product Datasheet

## LYVE-1 Antibody - Azide and BSA Free NB600-1005

Unit Size: 0.2 mg

Store at 4C short term. Aliquot and store at -20C long term. Avoid freeze-thaw cycles.

[www.novusbio.com](http://www.novusbio.com)



[technical@novusbio.com](mailto:technical@novusbio.com)

Reviews: 1

Protocols, Publications, Related Products, Reviews, Research Tools and Images at:  
[www.novusbio.com/NB600-1005](http://www.novusbio.com/NB600-1005)

Updated 9/9/2025 v.20.1

Earn rewards for product  
reviews and publications.

Submit a publication at [www.novusbio.com/publications](http://www.novusbio.com/publications)

Submit a review at [www.novusbio.com/reviews/destination/NB600-1005](http://www.novusbio.com/reviews/destination/NB600-1005)



**NB600-1005**

LYVE-1 Antibody - Azide and BSA Free

<b>Product Information</b>	
<b>Unit Size</b>	0.2 mg
<b>Concentration</b>	LYOPH mg/ml
<b>Storage</b>	Store at 4C short term. Aliquot and store at -20C long term. Avoid freeze-thaw cycles.
<b>Clonality</b>	Polyclonal
<b>Preservative</b>	No Preservative
<b>Reconstitution Instructions</b>	Centrifuge vial prior to opening. Reconstitute in sterile water to a concentration of 0.1-1.0 mg/ml. Please note the sample size of this product will be provided in reconstituted liquid form.
<b>Isotype</b>	IgG
<b>Purity</b>	Protein A purified
<b>Buffer</b>	PBS
<b>Target Molecular Weight</b>	35 kDa

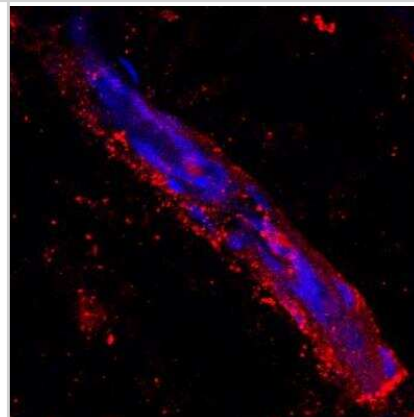
<b>Product Description</b>	
<b>Description</b>	Novus Biologicals Rabbit LYVE-1 Antibody - Azide and BSA Free (NB600-1005) is a polyclonal antibody validated for use in IHC, WB and Flow. All Novus Biologicals antibodies are covered by our 100% guarantee.
<b>Host</b>	Rabbit
<b>Gene ID</b>	10894
<b>Gene Symbol</b>	LYVE1
<b>Species</b>	Human
<b>Marker</b>	Lymphatic Vessel Marker
<b>Immunogen</b>	Recombinant human LYVE-1

<b>Product Application Details</b>	
<b>Applications</b>	Western Blot, Immunohistochemistry-Paraffin, Flow Cytometry, Immunohistochemistry, Immunohistochemistry-Frozen, CyTOF-ready
<b>Recommended Dilutions</b>	Western Blot 2-5 ug/ml, Flow Cytometry 2-30 ug/ml, Immunohistochemistry 1:10-1:500, Immunohistochemistry-Paraffin 1:10-1:500, Immunohistochemistry-Frozen 6-30 ug/ml, CyTOF-ready
<b>Application Notes</b>	IHC: Originally, it has not been tested on formalin-fixed tissue sections. However, recently one of our customers has used it successfully on this type of application (see review). Predicted molecular weight: 39 kDa. Not tested in other applications. Optimal dilutions/concentrations should be determined by the end user.

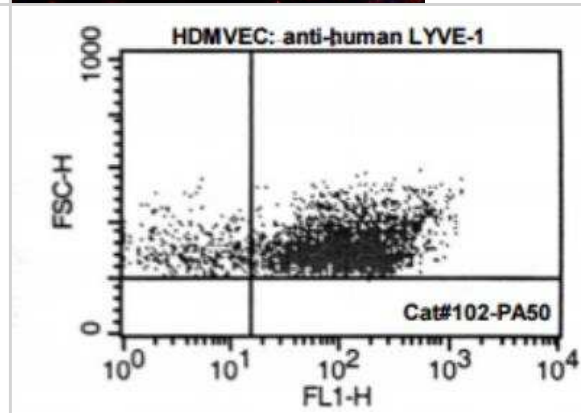


## Images

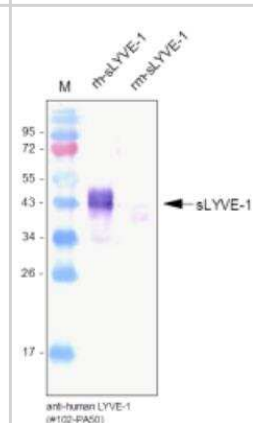
Immunohistochemistry: LYVE-1 Antibody [NB600-1005] - LYVE1 Antibody [NB600-1005] - Staining of human skin showing positivity in lymphatic vessels. Image provided by Patricia Redondo.



Flow Cytometry: LYVE-1 Antibody [NB600-1005] - Analysis with primary human dermal microvascular endothelial cells (HDMVEC).



Western Blot: LYVE-1 Antibody [NB600-1005] - Analysis of recombinant human sLYVE-1 and mouse sLYVE-1 using an anti-human LYVE-1 polyclonal antibody directed against the extracellular domain of human LYVE-1. There is more or less no cross reactivity with mouse LYVE-1.





### **Novus Biologicals USA**

10730 E. Briarwood Avenue  
Centennial, CO 80112  
USA  
Phone: 303.730.1950  
Toll Free: 1.888.506.6887  
Fax: 303.730.1966  
nb-customerservice@bio-techne.com

### **Bio-Techne Canada**

21 Canmotor Ave  
Toronto, ON M8Z 4E6  
Canada  
Phone: 905.827.6400  
Toll Free: 855.668.8722  
Fax: 905.827.6402  
canada.inquires@bio-techne.com

### **Bio-Techne Ltd**

19 Barton Lane  
Abingdon Science Park  
Abingdon, OX14 3NB, United Kingdom  
Phone: (44) (0) 1235 529449  
Free Phone: 0800 37 34 15  
Fax: (44) (0) 1235 533420  
info.EMEA@bio-techne.com

### **General Contact Information**

www.novusbio.com  
Technical Support: nb-technical@bio-techne.com  
Orders: nb-customerservice@bio-techne.com  
General: novus@novusbio.com

### **Products Related to NB600-1005**

---

NBP2-33376H	Blue Marker Antibody (6F4-F6) [HRP]
HAF008	Goat anti-Rabbit IgG Secondary Antibody [HRP]
NB7160	Goat anti-Rabbit IgG (H+L) Secondary Antibody [HRP]
NBP2-24891	Rabbit IgG Isotype Control

---

### **Limitations**

This product is for research use only and is not approved for use in humans or in clinical diagnosis. Primary Antibodies are guaranteed for 1 year from date of receipt.

For more information on our 100% guarantee, please visit [www.novusbio.com/guarantee](http://www.novusbio.com/guarantee)

Earn gift cards/discounts by submitting a review: [www.novusbio.com/reviews/submit/NB600-1005](http://www.novusbio.com/reviews/submit/NB600-1005)

Earn gift cards/discounts by submitting a publication using this product:  
[www.novusbio.com/publications](http://www.novusbio.com/publications)

