

Product Datasheet

gamma Tubulin Antibody (TU-30) - BSA Free NB500-574

Unit Size: 0.1 mg

Store at 4C. Do not freeze.

www.novusbio.com



technical@novusbio.com

Reviews: 1 **Publications: 3**

Protocols, Publications, Related Products, Reviews, Research Tools and Images at:
www.novusbio.com/NB500-574

Updated 9/9/2025 v.20.1

Earn rewards for product
reviews and publications.

Submit a publication at www.novusbio.com/publications

Submit a review at www.novusbio.com/reviews/destination/NB500-574



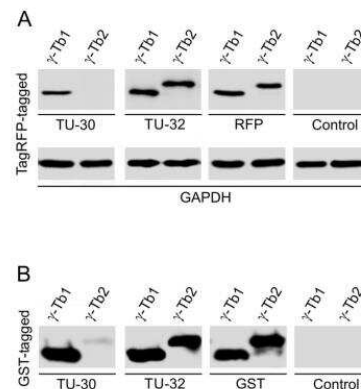
NB500-574

gamma Tubulin Antibody (TU-30) - BSA Free

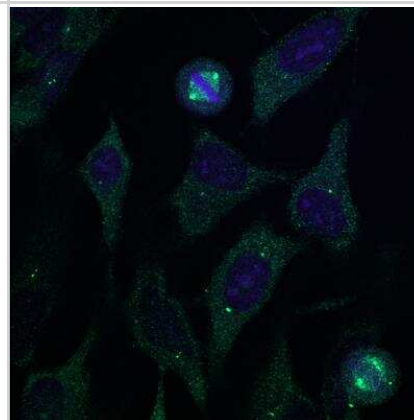
Product Information	
Unit Size	0.1 mg
Concentration	1.0 mg/ml
Storage	Store at 4C. Do not freeze.
Clonality	Monoclonal
Clone	TU-30
Preservative	15mM Sodium Azide
Isotype	IgG1
Purity	Protein A purified
Buffer	Phosphate buffered saline (PBS), pH 7.4
Target Molecular Weight	48 kDa
Product Description	
Description	Novus Biologicals Mouse gamma Tubulin Antibody (TU-30) - BSA Free (NB500-574) is a monoclonal antibody validated for use in IHC, WB, Flow and ICC/IF. Anti-gamma Tubulin Antibody: Cited in 2 publications. All Novus Biologicals antibodies are covered by our 100% guarantee.
Host	Mouse
Gene ID	7283
Gene Symbol	TUBG1
Species	Human, Mouse, Rat, Porcine, Bovine, Chicken, Plant, Protozoa
Reactivity Notes	Please note that this antibody is reactive to Mouse and derived from the same host, Mouse. Mouse-On-Mouse blocking reagent may be needed for IHC and ICC experiments to reduce high background signal. You can find these reagents under catalog numbers PK-2200-NB and MP-2400-NB. Please contact Technical Support if you have any questions.
Marker	Centrosome Marker
Specificity/Sensitivity	The antibody TU-30 recognizes C-terminal peptide sequence EYHAATRPDYISWGTQ (aa 434-449) of gamma-tubulin, a 48 kDa structural constituent of cytoskeleton and microtubule organizing center (MTOC).
Immunogen	C-terminal peptide of gamma-tubulin conjugated to KLH.
Product Application Details	
Applications	Western Blot, Immunohistochemistry-Paraffin, Flow Cytometry, Flow (Intracellular), Immunocytochemistry/ Immunofluorescence
Recommended Dilutions	Western Blot 1:1000, Flow Cytometry, Immunocytochemistry/ Immunofluorescence 1-2 ug/ml, Immunohistochemistry-Paraffin, Flow (Intracellular)
Application Notes	Immunocytochemistry - Staining technique: (a) Fix cells for 10 min in methanol at -20oC and for 6 min in acetone at -20oC; (b) Fix cells directly in methanol for 10 min at -20oC or in acetone for 10 min at -20oC. Incubation: 45 min in room temperature Application note: The antibody TU-30 stains only fixed cells. gamma Tubulin Antibody (TU-30) - BSA Free validated for Immunohistochemistry-Paraffin from a verified customer review.

Images

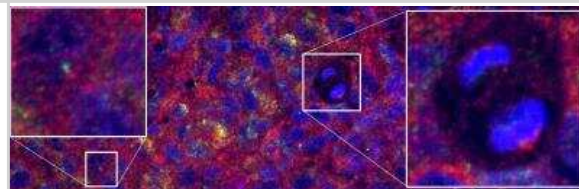
Western Blot: gamma Tubulin Antibody (TU-30) [NB500-574] - Western blotting analysis of differential reactivity of monoclonal antibodies to gamma-tubulin with human gamma-tubulin isotypes. (A) Immunoblots of total cell lysates from SH-SY5Y cells, expressing TagRFP-tagged human gamma-tubulin 1 (gamma-Tb1) or gamma-tubulin 2 (gamma-Tb2), probed with Abs to gamma-tubulin (TU-30, TU-32), TagRFP (RFP) and GAPDH. In control samples, only secondary anti-mouse Ab was applied. (B) Immunoblots of immobilized GST-tagged human C-terminal regions (a.a. 362-451) of gamma-Tb1 or gamma-Tb2 probed with Abs to gamma-tubulin (TU-30, TU-32) and GST. In control samples, only secondary anti-mouse Ab was applied.



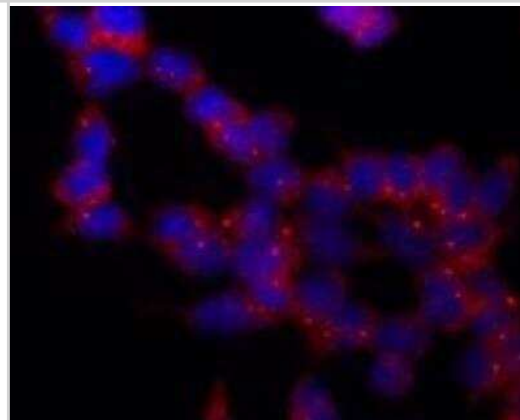
Immunocytochemistry/Immunofluorescence: gamma Tubulin Antibody (TU-30) [NB500-574] - Staining of HeLa cells using anti-gamma Tubulin antibody (green). Nuclei were stained with DAPI (blue). Image from verified customer review.



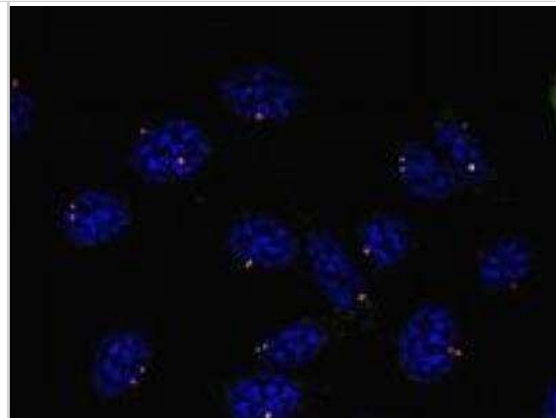
Immunohistochemistry-Paraffin: gamma Tubulin Antibody (TU-30) - BSA Free [NB500-574] - FFPE Glioblastoma PDX is stained with mouse-gamma tubulin antibody (NB500-574) (red) for centrosomes and rabbit Arl13B (green) for primary cilia. Gamma Tubulin antibody is diluted 1:25, incubated overnight at 4C. Image from verified customer review.



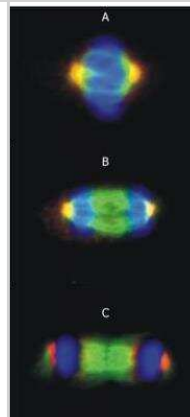
Immunocytochemistry/Immunofluorescence: gamma Tubulin Antibody (TU-30) [NB500-574] - Staining of P19X1 mouse embryonal carcinoma cell line using anti-gamma-tubulin (TU-30) (detection by secondary antibody Goat anti-mouse Cy3). Nuclei were stained with DAPI (blue).



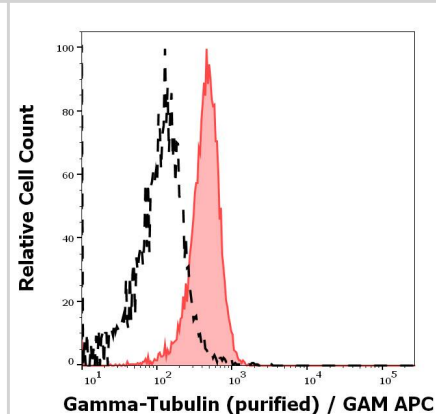
Immunocytochemistry/Immunofluorescence: gamma Tubulin Antibody (TU-30) [NB500-574] - Staining of mouse fibroblasts using anti-gamma-tubulin (TU-30; direct conjugate with Dyomics 547, red). Nuclei were stained with DAPI (blue).



Immunocytochemistry/Immunofluorescence: gamma Tubulin Antibody (TU-30) [NB500-574] - Staining of microtubular networks in 3T3 mouse fibroblasts. 3A - metaphase; 3B - anaphase; 3C - telophase Gamma-tubulin (red) stained with anti-gamma-tubulin (TU-30), alpha-tubulin (green) with polyclonal anti-alpha-tubulin antibody and nuclei with DAPI (blue).



Analysis of human gamma-tubulin using mouse monoclonal antibody TU-30 on lysates of various cell lines under reducing and non-reducing conditions. Nitrocellulose membrane was probed with 2 µg/ml of mouse anti-gamma-tubulin monoclonal antibody followed by IRDye800-conjugated anti-mouse secondary antibody. A specific band was detected for gamma-tubulin at approximately 46 kDa.



Publications

Apken L, Barz H, Beel S et al. RalGAP complexes control secretion and primary cilia in pancreatic disease. *Life Science Alliance* 2025-06-09 [PMID: 40490362]

Hou CC, Li D, Berry BC et al. Heterozygous FOXP1 Mutations Cause Incomplete Ependymal Cell Differentiation and Communicating Hydrocephalus Cellular and molecular neurobiology 2023-08-24 [PMID: 37620636] (Immunohistochemistry, Mouse)

Details:
1:500 dilution

Choi JS, Ryu J, Bae WY et al. Zingerone Suppresses Tumor Development through Decreasing Cyclin D1 Expression and Inducing Mitotic Arrest. *Int J Mol Sci* 2018-09-19 [PMID: 30235818] (ICC/IF, Human, Mouse)



Novus Biologicals USA

10730 E. Briarwood Avenue
Centennial, CO 80112
USA
Phone: 303.730.1950
Toll Free: 1.888.506.6887
Fax: 303.730.1966
nb-customerservice@bio-techne.com

Bio-Techne Canada

21 Canmotor Ave
Toronto, ON M8Z 4E6
Canada
Phone: 905.827.6400
Toll Free: 855.668.8722
Fax: 905.827.6402
canada.inquires@bio-techne.com

Bio-Techne Ltd

19 Barton Lane
Abingdon Science Park
Abingdon, OX14 3NB, United Kingdom
Phone: (44) (0) 1235 529449
Free Phone: 0800 37 34 15
Fax: (44) (0) 1235 533420
info.EMEA@bio-techne.com

General Contact Information

www.novusbio.com
Technical Support: nb-technical@bio-techne.com
Orders: nb-customerservice@bio-techne.com
General: novus@novusbio.com

Products Related to NB500-574

NBP2-33376H	Blue Marker Antibody (6F4-F6) [HRP]
HAF007	Goat anti-Mouse IgG Secondary Antibody [HRP]
NB7539	Goat anti-Mouse IgG (H+L) Secondary Antibody [HRP]
NBP1-97005-0.5mg	Mouse IgG1 Isotype Control (MG1)

Limitations

This product is for research use only and is not approved for use in humans or in clinical diagnosis. Primary Antibodies are guaranteed for 1 year from date of receipt.

For more information on our 100% guarantee, please visit www.novusbio.com/guarantee

Earn gift cards/discounts by submitting a review: www.novusbio.com/reviews/submit/NB500-574

Earn gift cards/discounts by submitting a publication using this product:
www.novusbio.com/publications

