

# Product Datasheet

## PAG1 Antibody (PAG-C1) - BSA Free NB500-487

Unit Size: 0.1 mg

Store at 4C. Do not freeze.

[www.novusbio.com](http://www.novusbio.com)



[technical@novusbio.com](mailto:technical@novusbio.com)

### Publications: 1

Protocols, Publications, Related Products, Reviews, Research Tools and Images at:  
[www.novusbio.com/NB500-487](http://www.novusbio.com/NB500-487)

Updated 9/9/2025 v.20.1

Earn rewards for product  
reviews and publications.

Submit a publication at [www.novusbio.com/publications](http://www.novusbio.com/publications)

Submit a review at [www.novusbio.com/reviews/destination/NB500-487](http://www.novusbio.com/reviews/destination/NB500-487)



**NB500-487****PAG1 Antibody (PAG-C1) - BSA Free**

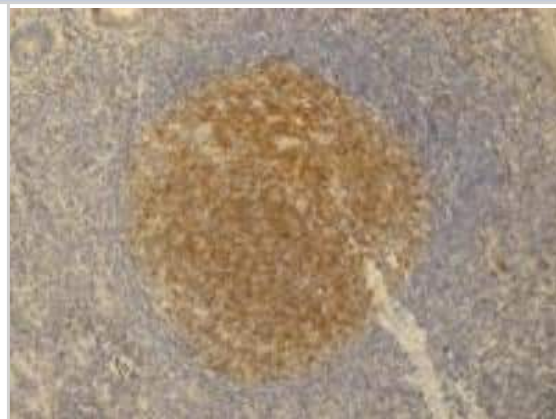
<b>Product Information</b>	
<b>Unit Size</b>	0.1 mg
<b>Concentration</b>	1.0 mg/ml
<b>Storage</b>	Store at 4C. Do not freeze.
<b>Clonality</b>	Monoclonal
<b>Clone</b>	PAG-C1
<b>Preservative</b>	15mM Sodium Azide
<b>Isotype</b>	IgG2b
<b>Purity</b>	Protein A purified
<b>Buffer</b>	Phosphate buffered saline (PBS), pH 7.4
<b>Target Molecular Weight</b>	46 kDa

<b>Product Description</b>	
<b>Description</b>	Novus Biologicals Mouse PAG1 Antibody (PAG-C1) - BSA Free (NB500-487) is a monoclonal antibody validated for use in IHC, WB and IP. Anti-PAG1 Antibody: Cited in 1 publication. All Novus Biologicals antibodies are covered by our 100% guarantee.
<b>Host</b>	Mouse
<b>Gene ID</b>	55824
<b>Gene Symbol</b>	PAG1
<b>Species</b>	Human, Mouse, Rat, Bovine
<b>Reactivity Notes</b>	Please note that this antibody is reactive to Mouse and derived from the same host, Mouse. Additional Mouse on Mouse blocking steps may be required for IHC and ICC experiments. Please contact Technical Support for more information.
<b>Specificity/Sensitivity</b>	The antibody PAG-C1 recognizes an epitope located in the C-terminal domain of Csk-binding protein (Cbp / PAG), a 46 kDa ubiquitously expressed transmembrane adaptor protein present in membrane rafts (glycosphingolipid-enriched microdomains), which however migrates on SDS PAGE gels anomalously as an 80 kDa molecule.
<b>Immunogen</b>	C-terminal peptide (last 15 amino acids) of human Csk binding protein coupled to KLH.

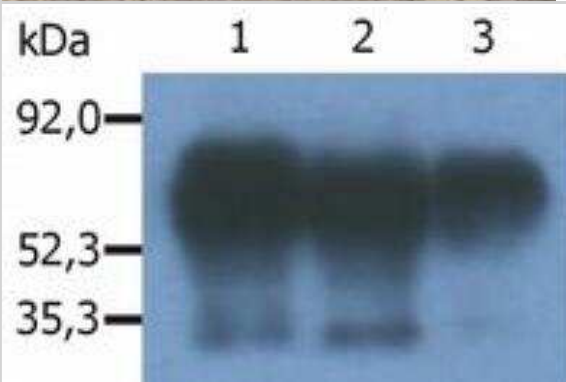
<b>Product Application Details</b>	
<b>Applications</b>	Western Blot, Immunohistochemistry-Paraffin, Immunohistochemistry, Immunoprecipitation
<b>Recommended Dilutions</b>	Western Blot 1:100-1:2000, Immunohistochemistry 1:10-1:500, Immunoprecipitation 1:50, Immunohistochemistry-Paraffin 1:200
<b>Application Notes</b>	Immunohistochemistry-Paraffin sections: heat-mediated antigen retrieval in citrate buffer pH 6.1

## Images

Immunohistochemistry-Paraffin: PAG1 Antibody (PAG-C1) [NB500-487] - staining (paraffin sections) of PAG/Cbp in germinal center of lymphatic follicle and in dispersed T cells in appendix tissue by monoclonal antibody PAG-C1. Positive signal in T cells.



Immunoprecipitation: PAG1 Antibody (PAG-C1) [NB500-487] - Immunoprecipitation of human Cbp/PAG from the lysate of RAJI human Burkitt lymphoma cell line. Western blot was immunostained with anti-human Cbp/PAG (MEM-255). Note: Csk-binding protein (Cbp/PAG) is a 46 kDa adaptor protein, which however migrates on SDS PAGE gels anomalously as an 80 kDa molecule. Lane 1,2: immunoprecipitation with anti-Cbp/PAG (PAG-C1) Lane 3: immunoprecipitation with anti-Cbp/PAG (polyclonal antibody).



## Publications

Yamashita M, Chattopadhyay S, Fensterl V et al. A TRIF-Independent Branch of TLR3 Signaling J Immunol 2012-03-15 [PMID: 22323545] (WB, Mouse)



### **Novus Biologicals USA**

10730 E. Briarwood Avenue  
Centennial, CO 80112  
USA  
Phone: 303.730.1950  
Toll Free: 1.888.506.6887  
Fax: 303.730.1966  
nb-customerservice@bio-techne.com

### **Bio-Techne Canada**

21 Canmotor Ave  
Toronto, ON M8Z 4E6  
Canada  
Phone: 905.827.6400  
Toll Free: 855.668.8722  
Fax: 905.827.6402  
canada.inquires@bio-techne.com

### **Bio-Techne Ltd**

19 Barton Lane  
Abingdon Science Park  
Abingdon, OX14 3NB, United Kingdom  
Phone: (44) (0) 1235 529449  
Free Phone: 0800 37 34 15  
Fax: (44) (0) 1235 533420  
info.EMEA@bio-techne.com

### **General Contact Information**

www.novusbio.com  
Technical Support: nb-technical@bio-techne.com  
Orders: nb-customerservice@bio-techne.com  
General: novus@novusbio.com

### **Products Related to NB500-487**

---

NBP2-33376H	Blue Marker Antibody (6F4-F6) [HRP]
HAF007	Goat anti-Mouse IgG Secondary Antibody [HRP]
NB7539	Goat anti-Mouse IgG (H+L) Secondary Antibody [HRP]
NBP2-27231	Mouse IgG2b Isotype Control (MPC-11)

---

### **Limitations**

This product is for research use only and is not approved for use in humans or in clinical diagnosis. Primary Antibodies are guaranteed for 1 year from date of receipt.

For more information on our 100% guarantee, please visit [www.novusbio.com/guarantee](http://www.novusbio.com/guarantee)

Earn gift cards/discounts by submitting a review: [www.novusbio.com/reviews/submit/NB500-487](http://www.novusbio.com/reviews/submit/NB500-487)

Earn gift cards/discounts by submitting a publication using this product:  
[www.novusbio.com/publications](http://www.novusbio.com/publications)

