

Product Datasheet

HLA DR/DP Antibody (MEM-136) - BSA Free NB500-447

Unit Size: 0.1 mg

Store at 4C. Do not freeze.

www.novusbio.com



technical@novusbio.com

Protocols, Publications, Related Products, Reviews, Research Tools and Images at:
www.novusbio.com/NB500-447

Updated 9/9/2025 v.20.1

Earn rewards for product
reviews and publications.

Submit a publication at www.novusbio.com/publications

Submit a review at www.novusbio.com/reviews/destination/NB500-447



NB500-447

HLA DR/DP Antibody (MEM-136) - BSA Free

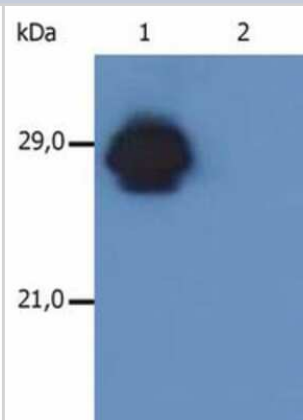
Product Information	
Unit Size	0.1 mg
Concentration	1.0 mg/ml
Storage	Store at 4C. Do not freeze.
Clonality	Monoclonal
Clone	MEM-136
Preservative	15mM Sodium Azide
Isotype	IgG1
Purity	Protein A purified
Buffer	Phosphate buffered saline (PBS), pH 7.4

Product Description	
Description	Novus Biologicals Mouse HLA DR/DP Antibody (MEM-136) - BSA Free (NB500-447) is a monoclonal antibody validated for use in IHC, WB, Flow and IP. All Novus Biologicals antibodies are covered by our 100% guarantee.
Host	Mouse
Gene ID	3122
Gene Symbol	HLA-DRA
Species	Human
Specificity/Sensitivity	The antibody MEM-136 recognizes common epitope on beta-chain of human HLA-DR and HLA-DP. It reacts with alpha/beta dimer as well as with dissociated beta-subunit. DR and DP are the isotypes of human MHC Class II molecules expressed on antigen-presenting cells (APC; dendritic cells, B lymphocytes, monocytes, macrophages).
Immunogen	PHA-activated peripheral blood lymphocytes.

Product Application Details	
Applications	Western Blot, Immunohistochemistry-Paraffin, Flow Cytometry, Immunohistochemistry, Immunoprecipitation, CyTOF-ready
Recommended Dilutions	Western Blot 1:1000, Flow Cytometry 1-4 ug/ml, Immunohistochemistry 1:10-1:500, Immunoprecipitation 1:50, Immunohistochemistry-Paraffin 1:10-1:500, CyTOF-ready
Application Notes	Western Blot - Non-reducing conditions. This antibody is CyTOF ready.

Images

Western Blot: HLA DR DP Antibody (MEM-136) [NB500-447] - Fig. 1. Western Blotting analysis of MHC Class II in whole cell lysate of RAJI human Burkitt lymphoma cell line using anti-human HLA-DR+DP (MEM-136). The antibody MEM-136 recognizes beta-chain of HLA-DR antigen under non-reducing conditions. Lane 1: immunostaining with anti-human HLA-DR+DP (MEM-136) Lane 2: immunostaining with Isotype mouse IgG1 control (PPV-06).





Novus Biologicals USA

10730 E. Briarwood Avenue
Centennial, CO 80112
USA
Phone: 303.730.1950
Toll Free: 1.888.506.6887
Fax: 303.730.1966
nb-customerservice@bio-techne.com

Bio-Techne Canada

21 Canmotor Ave
Toronto, ON M8Z 4E6
Canada
Phone: 905.827.6400
Toll Free: 855.668.8722
Fax: 905.827.6402
canada.inquires@bio-techne.com

Bio-Techne Ltd

19 Barton Lane
Abingdon Science Park
Abingdon, OX14 3NB, United Kingdom
Phone: (44) (0) 1235 529449
Free Phone: 0800 37 34 15
Fax: (44) (0) 1235 533420
info.EMEA@bio-techne.com

General Contact Information

www.novusbio.com
Technical Support: nb-technical@bio-techne.com
Orders: nb-customerservice@bio-techne.com
General: novus@novusbio.com

Products Related to NB500-447

NBP2-33376H	Blue Marker Antibody (6F4-F6) [HRP]
HAF007	Goat anti-Mouse IgG Secondary Antibody [HRP]
NB7539	Goat anti-Mouse IgG (H+L) Secondary Antibody [HRP]
NBP1-97005-0.5mg	Mouse IgG1 Isotype Control (MG1)

Limitations

This product is for research use only and is not approved for use in humans or in clinical diagnosis. Primary Antibodies are guaranteed for 1 year from date of receipt.

For more information on our 100% guarantee, please visit www.novusbio.com/guarantee

Earn gift cards/discounts by submitting a review: www.novusbio.com/reviews/submit/NB500-447

Earn gift cards/discounts by submitting a publication using this product:
www.novusbio.com/publications

