

Product Datasheet

EMMPRIN/CD147 Antibody (MEM-M6/1) - BSA Free NB500-430

Unit Size: 0.1 mg

Store at 4C. Do not freeze.

www.novusbio.com



technical@novusbio.com

Publications: 5

Protocols, Publications, Related Products, Reviews, Research Tools and Images at:
www.novusbio.com/NB500-430

Updated 9/9/2025 v.20.1

Earn rewards for product
reviews and publications.

Submit a publication at www.novusbio.com/publications

Submit a review at www.novusbio.com/reviews/destination/NB500-430



NB500-430**EMMPRIN/CD147 Antibody (MEM-M6/1) - BSA Free**

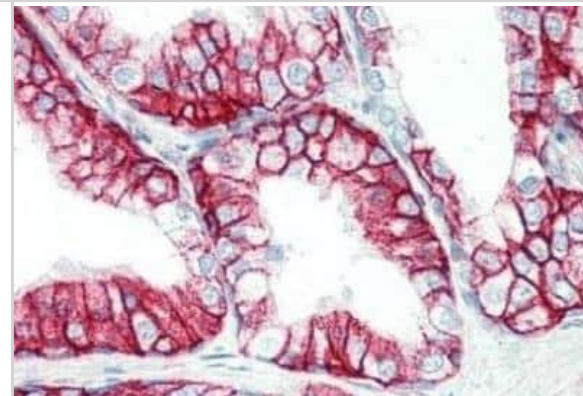
| Product Information | |
|--------------------------------|---|
| Unit Size | 0.1 mg |
| Concentration | 1.0 mg/ml |
| Storage | Store at 4C. Do not freeze. |
| Clonality | Monoclonal |
| Clone | MEM-M6/1 |
| Preservative | 15mM Sodium Azide |
| Isotype | IgG1 |
| Purity | Protein A purified |
| Buffer | Phosphate buffered saline (PBS), pH 7.4 |
| Target Molecular Weight | 60 kDa |

| Product Description | |
|--------------------------------|--|
| Description | Novus Biologicals Mouse EMMPRIN/CD147 Antibody (MEM-M6/1) - BSA Free (NB500-430) is a monoclonal antibody validated for use in IHC, WB, ELISA, Flow and IP. Anti-EMMPRIN/CD147 Antibody: Cited in 4 publications. All Novus Biologicals antibodies are covered by our 100% guarantee. |
| Host | Mouse |
| Gene ID | 682 |
| Gene Symbol | BSG |
| Species | Human, Equine |
| Reactivity Notes | Equine reactivity reported in scientific literature (PMID: 24998980). |
| Specificity/Sensitivity | The antibody MEM-M6/1 recognizes an epitope in the N-terminal Ig domain (D1) of CD147 (Neurothelin), a 50-60 kDa type I transmembrane glycoprotein primarily expressed on all leukocytes, red blood cells, platelets and endothelial cells; it is not expressed by resting lymphocytes. The antibody MEM-M6/1 is a high-affinity antibody capable of binding to unstimulated peripheral blood T cells. |
| Immunogen | Protein A-CR purified soluble recombinant form of CD147, CD147Rg, which consists of the cDNA coding for the hinge region, C2-and C3 domain of human IgG1, CD147Rg is secreted by transfectants as a dimer (NM_001728.2). |

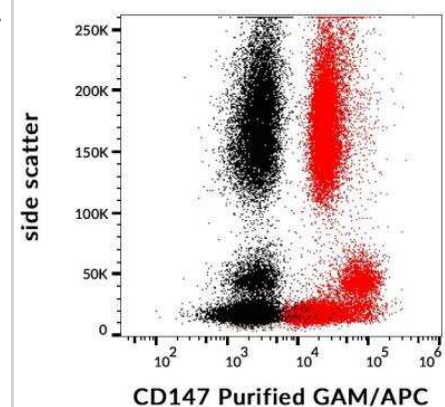
| Product Application Details | |
|------------------------------------|--|
| Applications | Western Blot, Immunohistochemistry-Paraffin, ELISA, Flow Cytometry, Immunohistochemistry, Immunoprecipitation, CyTOF-ready |
| Recommended Dilutions | Western Blot 1 ug/ml, Flow Cytometry 10 ug/ml, ELISA 1:100-1:2000, Immunohistochemistry, Immunoprecipitation 1:50, Immunohistochemistry-Paraffin 10 ug/ml, CyTOF-ready |
| Application Notes | Western Blot - Non-reducing conditions. Use in ELISA reported in scientific literature (PMID 24710016). This antibody is CyTOF ready. |

Images

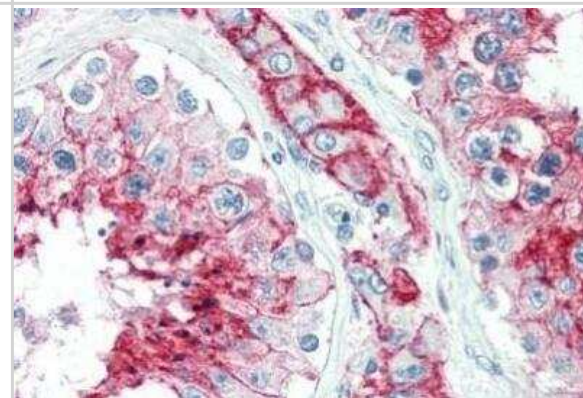
Immunohistochemistry-Paraffin: EMMPRIN/CD147 Antibody (MEM-M6/1) [NB500-430] - Staining of human prostate. Immunohistochemistry of formalin-fixed, paraffin-embedded tissue after heat-induced antigen retrieval. Antibody concentration 10 ug/ml.



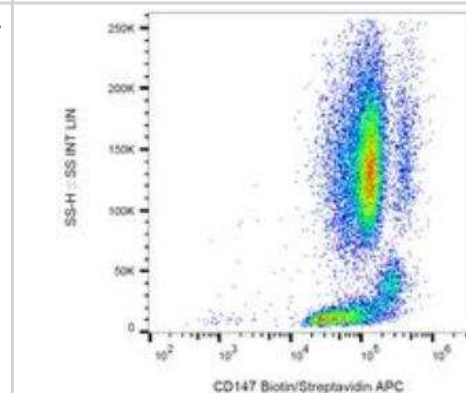
Flow Cytometry: EMMPRIN/CD147 Antibody (MEM-M6/1) [NB500-430] - Surface staining of human peripheral blood with anti-human CD147 (MEM-M6/1) purified, GAM-APC.



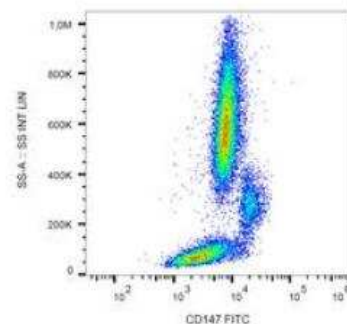
Immunohistochemistry-Paraffin: EMMPRIN/CD147 Antibody (MEM-M6/1) [NB500-430] - Staining of human testis. Immunohistochemistry of formalin-fixed, paraffin-embedded tissue after heat-induced antigen retrieval. Antibody concentration 10 ug/ml.



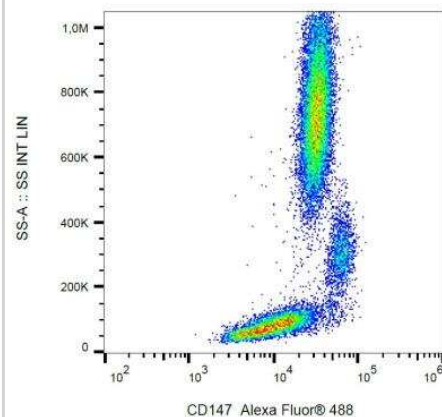
Flow Cytometry: EMMPRIN/CD147 Antibody (MEM-M6/1) [NB500-430] - Surface staining of human peripheral blood with anti-human CD147 (MEM-M6/1) biotin.



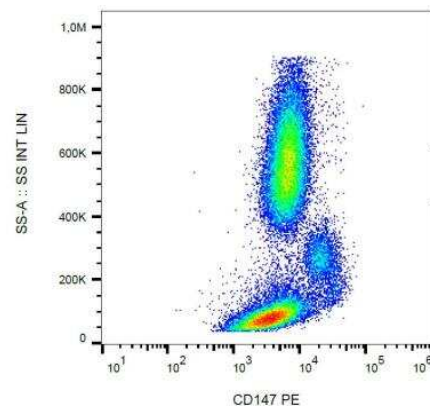
Flow Cytometry: EMMPRIN/CD147 Antibody (MEM-M6/1) [NB500-430] - Surface staining of human peripheral blood with anti-human CD147 (MEM-M6/1) FITC.



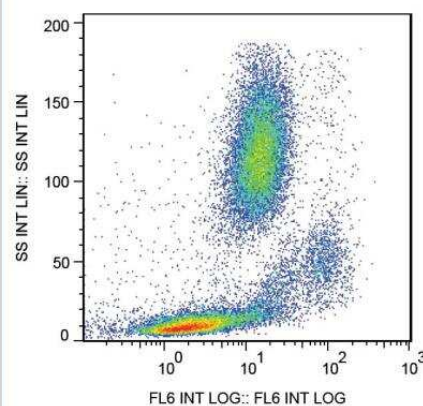
Flow Cytometry: EMMPRIN/CD147 Antibody (MEM-M6/1) [NB500-430] - Staining of human peripheral blood with anti-human CD147 (MEM-M6/1) Alexa Fluor® 488.



Flow Cytometry: EMMPRIN/CD147 Antibody (MEM-M6/1) [NB500-430] - Staining of human peripheral blood with anti-human CD147 (MEM-M6/1) PE.



Flow Cytometry: EMMPRIN/CD147 Antibody (MEM-M6/1) [NB500-430] - Staining of human peripheral blood with anti-human CD147 (MEM-M6/1) APC.



Publications

Ambrosi T, Morales D, Chen K et al. Basigin links altered skeletal stem cell lineage dynamics with glucocorticoid-induced bone loss and impaired angiogenesis Nature Communications 2025-08-15 [PMID: 40817087]

Joeh E, O'Leary T, Li W et al. Mapping glycan-mediated galectin-3 interactions by live cell proximity labeling Proc Natl Acad Sci U S A 2020-10-17 [PMID: 33067390]

Bortolotti D, Simioni C, Neri LM Et al. Relevance of VEGF and CD147 in different SARS-CoV-2 positive digestive tracts characterized by thrombotic damage FASEB journal : official publication of the Federation of American Societies for Experimental Biology 2021-12-01 [PMID: 34822202] (IF/IHC, Human)

Uhl PB, Szober CM, Amann B et al. In situ cell surface proteomics reveals differentially expressed membrane proteins in retinal pigment epithelial cells during autoimmune uveitis. J Proteomics 2014-07-02 [PMID: 24998980] (IHC-P, FLOW, Equine)

Details:

Basigin/CD147 antibody used at 1:10 dilution for FLOW application on healthy and uveitic equine RPE cells - harvested with Trypsin/EDTA (see full text for protocol details; data shown in Fig 1). Antibody also used for IHC-P on Bouin's solution fixed posterior eye cups-paraffin sections, EDTA-NaOH heat antigen retrieval, blocked with 1% BSA-TBST + 5% serum from host of secondary, primary used at 1:50 dilution ON 4C incubation, secondary used was anti-mouse IgG Alexa Fluor 647 (Fig 3, Fig 5).

Yoshioka Y, Kosaka N, Konishi Y et al. Ultra-sensitive liquid biopsy of circulating extracellular vesicles using ExoScreen. Nat Commun 2014-04-08 [PMID: 24710016] (ELISA, WB, Human)





Novus Biologicals USA

10730 E. Briarwood Avenue
Centennial, CO 80112
USA
Phone: 303.730.1950
Toll Free: 1.888.506.6887
Fax: 303.730.1966
nb-customerservice@bio-techne.com

Bio-Techne Canada

21 Canmotor Ave
Toronto, ON M8Z 4E6
Canada
Phone: 905.827.6400
Toll Free: 855.668.8722
Fax: 905.827.6402
canada.inquires@bio-techne.com

Bio-Techne Ltd

19 Barton Lane
Abingdon Science Park
Abingdon, OX14 3NB, United Kingdom
Phone: (44) (0) 1235 529449
Free Phone: 0800 37 34 15
Fax: (44) (0) 1235 533420
info.EMEA@bio-techne.com

General Contact Information

www.novusbio.com
Technical Support: nb-technical@bio-techne.com
Orders: nb-customerservice@bio-techne.com
General: novus@novusbio.com

Products Related to NB500-430

| | |
|------------------|--|
| NBL1-08036 | EMMPRIN/CD147 Overexpression Lysate |
| NBP2-33376H | Blue Marker Antibody (6F4-F6) [HRP] |
| HAF007 | Goat anti-Mouse IgG Secondary Antibody [HRP] |
| NB7539 | Goat anti-Mouse IgG (H+L) Secondary Antibody [HRP] |
| NBP1-97005-0.5mg | Mouse IgG1 Isotype Control (MG1) |

Limitations

This product is for research use only and is not approved for use in humans or in clinical diagnosis. Primary Antibodies are guaranteed for 1 year from date of receipt.

For more information on our 100% guarantee, please visit www.novusbio.com/guarantee

Earn gift cards/discounts by submitting a review: www.novusbio.com/reviews/submit/NB500-430

Earn gift cards/discounts by submitting a publication using this product:
www.novusbio.com/publications

