

Product Datasheet

Beta-endorphin Antibody (B31.15) - BSA Free NB500-414

Unit Size: 0.1 mg

Store at 4C. Do not freeze.

www.novusbio.com



technical@novusbio.com

Protocols, Publications, Related Products, Reviews, Research Tools and Images at:
www.novusbio.com/NB500-414

Updated 9/9/2025 v.20.1

Earn rewards for product
reviews and publications.

Submit a publication at www.novusbio.com/publications

Submit a review at www.novusbio.com/reviews/destination/NB500-414



NB500-414

Beta-endorphin Antibody (B31.15) - BSA Free

| Product Information | |
|---------------------|---|
| Unit Size | 0.1 mg |
| Concentration | 1.0 mg/ml |
| Storage | Store at 4C. Do not freeze. |
| Clonality | Monoclonal |
| Clone | B31.15 |
| Preservative | 15mM Sodium Azide |
| Isotype | IgG1 |
| Purity | Protein A purified |
| Buffer | Phosphate buffered saline (PBS), pH 7.4 |

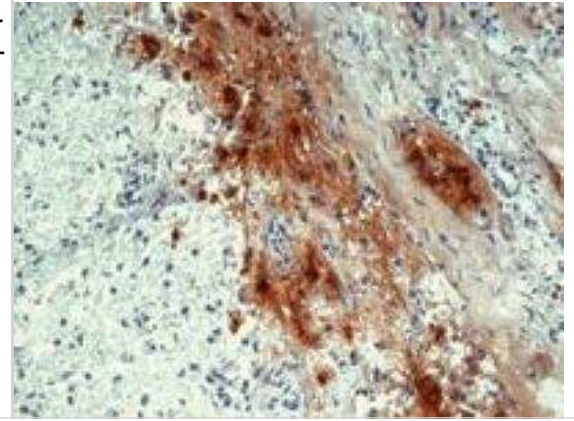
| Product Description | |
|-------------------------|--|
| Description | Novus Biologicals Mouse Beta-endorphin Antibody (B31.15) - BSA Free (NB500-414) is a monoclonal antibody validated for use in IHC. All Novus Biologicals antibodies are covered by our 100% guarantee. |
| Host | Mouse |
| Gene ID | 5443 |
| Gene Symbol | POMC |
| Species | Human |
| Specificity/Sensitivity | The antibody B31.15 reacts with human beta Endorphin, an endogenous opiate derived from ACTH gene. ACTH (Corticotropin; human 39 aa) is synthesized by the anterior pituitary gland and stimulates the adrenal cortex; 6 hormones are derived from one ACTH gene: ACTH, lipotropin, alpha-MSH, beta-MSH, endorphin, and one other. |
| Immunogen | Human beta Endorphin (full length native protein). |

| Product Application Details | |
|-----------------------------|---|
| Applications | Immunohistochemistry-Paraffin, Immunohistochemistry, Immunohistochemistry-Frozen |
| Recommended Dilutions | Immunohistochemistry 10-20 ug/ml, Immunohistochemistry-Paraffin 10 ug/ml, Immunohistochemistry-Frozen 1:200 |
| Application Notes | Purity is > 95% (by SDS-PAGE). Immunohistochemistry-Paraffin sections: Staining technique: Standard ABC technique (DAB+) Pretreatment: Heat retrieval (microwave oven) Incubation: overnight at 4oC |



Images

Immunohistochemistry: Beta-endorphin Antibody (B31.15) [NB500-414] - Staining of human pituitary gland (frozen sections) with anti-human Beta-endorphin (B31.15).





Novus Biologicals USA

10730 E. Briarwood Avenue
Centennial, CO 80112
USA
Phone: 303.730.1950
Toll Free: 1.888.506.6887
Fax: 303.730.1966
nb-customerservice@bio-techne.com

Bio-Techne Canada

21 Canmotor Ave
Toronto, ON M8Z 4E6
Canada
Phone: 905.827.6400
Toll Free: 855.668.8722
Fax: 905.827.6402
canada.inquires@bio-techne.com

Bio-Techne Ltd

19 Barton Lane
Abingdon Science Park
Abingdon, OX14 3NB, United Kingdom
Phone: (44) (0) 1235 529449
Free Phone: 0800 37 34 15
Fax: (44) (0) 1235 533420
info.EMEA@bio-techne.com

General Contact Information

www.novusbio.com
Technical Support: nb-technical@bio-techne.com
Orders: nb-customerservice@bio-techne.com
General: novus@novusbio.com

Products Related to NB500-414

| | |
|------------------|--|
| HAF007 | Goat anti-Mouse IgG Secondary Antibody [HRP] |
| NB7539 | Goat anti-Mouse IgG (H+L) Secondary Antibody [HRP] |
| NBP1-97005-0.5mg | Mouse IgG1 Isotype Control (MG1) |
| 210-TA-005 | TNF-alpha [Unconjugated] |

Limitations

This product is for research use only and is not approved for use in humans or in clinical diagnosis. Primary Antibodies are guaranteed for 1 year from date of receipt.

For more information on our 100% guarantee, please visit www.novusbio.com/guarantee

Earn gift cards/discounts by submitting a review: www.novusbio.com/reviews/submit/NB500-414

Earn gift cards/discounts by submitting a publication using this product:
www.novusbio.com/publications

