

# Product Datasheet

## SSEA-1 Antibody (MEM-158) - BSA Free NB500-376

Unit Size: 0.1 mg

Store at 4C. Do not freeze.

[www.novusbio.com](http://www.novusbio.com)



[technical@novusbio.com](mailto:technical@novusbio.com)

Protocols, Publications, Related Products, Reviews, Research Tools and Images at:  
[www.novusbio.com/NB500-376](http://www.novusbio.com/NB500-376)

Updated 9/9/2025 v.20.1

Earn rewards for product  
reviews and publications.

Submit a publication at [www.novusbio.com/publications](http://www.novusbio.com/publications)

Submit a review at [www.novusbio.com/reviews/destination/NB500-376](http://www.novusbio.com/reviews/destination/NB500-376)



**NB500-376**

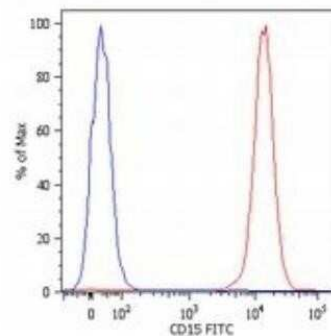
SSEA-1 Antibody (MEM-158) - BSA Free

<b>Product Information</b>	
<b>Unit Size</b>	0.1 mg
<b>Concentration</b>	1 mg/ml
<b>Storage</b>	Store at 4C. Do not freeze.
<b>Clonality</b>	Monoclonal
<b>Clone</b>	MEM-158
<b>Preservative</b>	15mM Sodium Azide
<b>Isotype</b>	IgM
<b>Purity</b>	Multi-step
<b>Buffer</b>	Tris buffered saline (TBS), pH 8.0
<b>Product Description</b>	
<b>Description</b>	Novus Biologicals Mouse SSEA-1 Antibody (MEM-158) - BSA Free (NB500-376) is a monoclonal antibody validated for use in Flow and IP. All Novus Biologicals antibodies are covered by our 100% guarantee.
<b>Host</b>	Mouse
<b>Gene ID</b>	2526
<b>Gene Symbol</b>	FUT4
<b>Species</b>	Human, Bovine (Negative), Porcine (Negative), Sheep (Negative)
<b>Specificity/Sensitivity</b>	The antibody MEM-158 reacts with CD15, a cell membrane molecule 3-fucosyl-N-acetyllactosamine (3-FAL) strongly expressed on granulocytes, monocytes, macrophages, mast cells; it is also present on Langerhans cells and some myeloid precursors cells. HLDA VI; WS Code AS A053
<b>Immunogen</b>	Human granulocytes
<b>Product Application Details</b>	
<b>Applications</b>	Flow Cytometry, Immunoprecipitation, CyTOF-ready
<b>Recommended Dilutions</b>	Flow Cytometry 1-4 ug/ml, Immunoprecipitation 1:50, CyTOF-ready

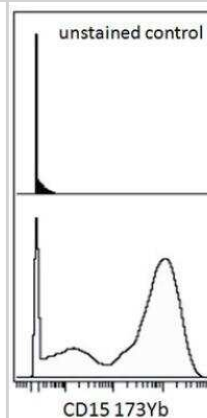


## Images

Flow Cytometry: CD15/Lewis X Antibody (MEM-158) [NB500-376] - Analysis using the FITC conjugate of NB500-376. Staining of human peripheral blood cells with anti-human CD15 (MEM-158) FITC. Cells in the granulocyte gate were used for analysis.



Flow Cytometry: CD15/Lewis X Antibody (MEM-158) [NB500-376] - Surface staining (mass cytometry) of human peripheral blood cells (after ammonium chloride red blood cell lysis) with anti-human CD15 (MEM-158) 173Yb. Gated on singlets.





### **Novus Biologicals USA**

10730 E. Briarwood Avenue  
Centennial, CO 80112  
USA  
Phone: 303.730.1950  
Toll Free: 1.888.506.6887  
Fax: 303.730.1966  
nb-customerservice@bio-techne.com

### **Bio-Techne Canada**

21 Canmotor Ave  
Toronto, ON M8Z 4E6  
Canada  
Phone: 905.827.6400  
Toll Free: 855.668.8722  
Fax: 905.827.6402  
canada.inquires@bio-techne.com

### **Bio-Techne Ltd**

19 Barton Lane  
Abingdon Science Park  
Abingdon, OX14 3NB, United Kingdom  
Phone: (44) (0) 1235 529449  
Free Phone: 0800 37 34 15  
Fax: (44) (0) 1235 533420  
info.EMEA@bio-techne.com

### **General Contact Information**

www.novusbio.com  
Technical Support: nb-technical@bio-techne.com  
Orders: nb-customerservice@bio-techne.com  
General: novus@novusbio.com

### **Products Related to NB500-376**

---

HAF007	Goat anti-Mouse IgG Secondary Antibody [HRP]
NB7539	Goat anti-Mouse IgG (H+L) Secondary Antibody [HRP]
NBP1-97007	Mouse IgM Isotype Control
NB500-377	SSEA-1 Antibody (MEM-158) [FITC]

---

### **Limitations**

This product is for research use only and is not approved for use in humans or in clinical diagnosis. Primary Antibodies are guaranteed for 1 year from date of receipt.

For more information on our 100% guarantee, please visit [www.novusbio.com/guarantee](http://www.novusbio.com/guarantee)

Earn gift cards/discounts by submitting a review: [www.novusbio.com/reviews/submit/NB500-376](http://www.novusbio.com/reviews/submit/NB500-376)

Earn gift cards/discounts by submitting a publication using this product:  
[www.novusbio.com/publications](http://www.novusbio.com/publications)

