

# Product Datasheet

## MHC Class I Antibody (MEM-E/06) - BSA Free NB500-307

Unit Size: 0.1 mg

Store at 4C. Do not freeze.

[www.novusbio.com](http://www.novusbio.com)



[technical@novusbio.com](mailto:technical@novusbio.com)

Protocols, Publications, Related Products, Reviews, Research Tools and Images at:  
[www.novusbio.com/NB500-307](http://www.novusbio.com/NB500-307)

Updated 9/9/2025 v.20.1

Earn rewards for product  
reviews and publications.

Submit a publication at [www.novusbio.com/publications](http://www.novusbio.com/publications)

Submit a review at [www.novusbio.com/reviews/destination/NB500-307](http://www.novusbio.com/reviews/destination/NB500-307)



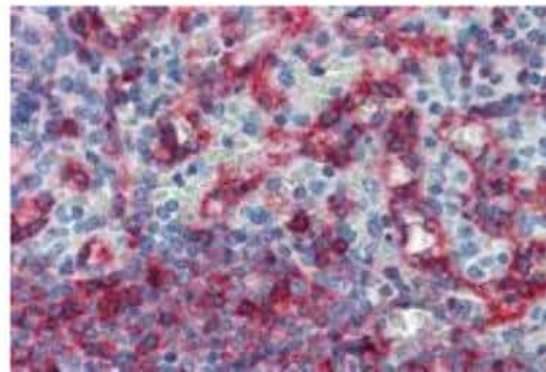
**NB500-307**

MHC Class I Antibody (MEM-E/06) - BSA Free

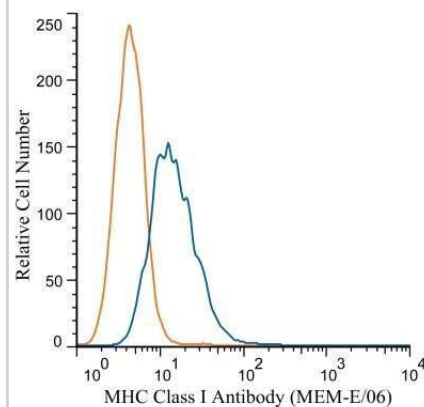
<b>Product Information</b>	
<b>Unit Size</b>	0.1 mg
<b>Concentration</b>	1.0 mg/ml
<b>Storage</b>	Store at 4C. Do not freeze.
<b>Clonality</b>	Monoclonal
<b>Clone</b>	MEM-E/06
<b>Preservative</b>	15mM Sodium Azide
<b>Isotype</b>	IgG1
<b>Purity</b>	Protein A purified
<b>Buffer</b>	Phosphate buffered saline (PBS), pH 7.4
<b>Product Description</b>	
<b>Description</b>	Novus Biologicals Mouse MHC Class I Antibody (MEM-E/06) - BSA Free (NB500-307) is a monoclonal antibody validated for use in IHC, Flow and IP. All Novus Biologicals antibodies are covered by our 100% guarantee.
<b>Host</b>	Mouse
<b>Gene ID</b>	3133
<b>Gene Symbol</b>	HLA-E
<b>Species</b>	Human, Primate
<b>Specificity/Sensitivity</b>	This antibody (clone MEM-E/06) recognized native surface-expressed HLA-E, but not denaturated heavy chain of HLA-E. HLA-E belongs to the MHC Class I molecules (MHC Class Ib; nonclassical) and it is expressed on many types of the human cells. Some resultss showed that this antibody cross-reacts with some classical MHC Class I molecules (HLA-A3, -A11, -B7). However, others have confirmed that this antibody exhibits much broader cross-reactivity classical MHC Class I antigens, namely with HLA-A24, -A32, -B8, -B15, -B27, -B35, -B44, -B54, -C3, -C4, -C5, -C7.
<b>Immunogen</b>	Bacterially expressed recombinant full length protein refolded with beta2-microglobulin and peptide (Human).
<b>Product Application Details</b>	
<b>Applications</b>	Immunohistochemistry-Paraffin, Flow Cytometry, Immunohistochemistry, Immunoprecipitation, CyTOF-ready
<b>Recommended Dilutions</b>	Flow Cytometry 1-4 ug/ml, Immunohistochemistry 1:10 - 1:500, Immunoprecipitation 1:50, Immunohistochemistry-Paraffin 10 ug/ml, CyTOF-ready
<b>Application Notes</b>	This antibody is Cytof ready.

## Images

Immunohistochemistry: MHC Class I Antibody (MEM-E/06) [NB500-307] - Staining of human spleen (paraffin sections) with anti-HLA-E (clone MEM-E/06).



Flow Cytometry: MHC Class I Antibody (MEM-E/06) [NB500-307] - Analysis using PE conjugate of NB500-307. A cell surface stain was performed on THP-1 cells with MHC Class I antibody (MEM-E/06) NB500-307 (blue) and a matched isotype control NBP2-27287 (orange). Cells were incubated in an antibody dilution of 1:100 for 20 minutes at room temperature. Both antibodies were conjugated to PE.





### **Novus Biologicals USA**

10730 E. Briarwood Avenue  
Centennial, CO 80112  
USA  
Phone: 303.730.1950  
Toll Free: 1.888.506.6887  
Fax: 303.730.1966  
nb-customerservice@bio-techne.com

### **Bio-Techne Canada**

21 Canmotor Ave  
Toronto, ON M8Z 4E6  
Canada  
Phone: 905.827.6400  
Toll Free: 855.668.8722  
Fax: 905.827.6402  
canada.inquires@bio-techne.com

### **Bio-Techne Ltd**

19 Barton Lane  
Abingdon Science Park  
Abingdon, OX14 3NB, United Kingdom  
Phone: (44) (0) 1235 529449  
Free Phone: 0800 37 34 15  
Fax: (44) (0) 1235 533420  
info.EMEA@bio-techne.com

### **General Contact Information**

www.novusbio.com  
Technical Support: nb-technical@bio-techne.com  
Orders: nb-customerservice@bio-techne.com  
General: novus@novusbio.com

### **Products Related to NB500-307**

---

HAF007	Goat anti-Mouse IgG Secondary Antibody [HRP]
NB7539	Goat anti-Mouse IgG (H+L) Secondary Antibody [HRP]
NBP1-97005-0.5mg	Mouse IgG1 Isotype Control (MG1)
NB500-307PE	MHC Class I Antibody (MEM-E/06) [PE]

---

### **Limitations**

This product is for research use only and is not approved for use in humans or in clinical diagnosis. Primary Antibodies are guaranteed for 1 year from date of receipt.

For more information on our 100% guarantee, please visit [www.novusbio.com/guarantee](http://www.novusbio.com/guarantee)

Earn gift cards/discounts by submitting a review: [www.novusbio.com/reviews/submit/NB500-307](http://www.novusbio.com/reviews/submit/NB500-307)

Earn gift cards/discounts by submitting a publication using this product:  
[www.novusbio.com/publications](http://www.novusbio.com/publications)

