

Product Datasheet

RCN1 Antibody - BSA Free NB500-256

Unit Size: 100 ul

Store at 4C. Do not freeze.

www.novusbio.com



technical@novusbio.com

Publications: 1

Protocols, Publications, Related Products, Reviews, Research Tools and Images at:
www.novusbio.com/NB500-256

Updated 9/9/2025 v.20.1

Earn rewards for product
reviews and publications.

Submit a publication at www.novusbio.com/publications

Submit a review at www.novusbio.com/reviews/destination/NB500-256



NB500-256

RCN1 Antibody - BSA Free

Product Information	
Unit Size	100 ul
Concentration	1.0 mg/ml
Storage	Store at 4C. Do not freeze.
Clonality	Polyclonal
Preservative	0.09% Sodium Azide
Isotype	IgG
Purity	Immunogen affinity purified
Buffer	Tris-Citrate/Phosphate (pH 7.0 - 8.0)
Target Molecular Weight	39 kDa

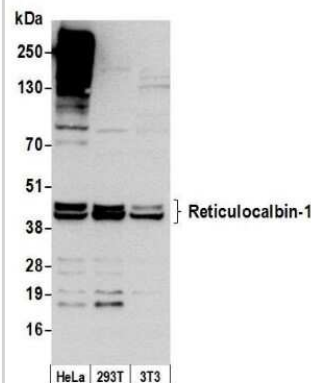
Product Description	
Description	Novus Biologicals Rabbit RCN1 Antibody - BSA Free (NB500-256) is a polyclonal antibody validated for use in IHC, WB and IP. Anti-RCN1 Antibody: Cited in 1 publication. All Novus Biologicals antibodies are covered by our 100% guarantee.
Host	Rabbit
Gene ID	5954
Gene Symbol	RCN1
Species	Human, Mouse
Immunogen	A synthetic peptide that maps to a region between residues 1 and 75 of human Reticulocalbin-1, EF-hand calcium binding domain using the numbering given in Swiss-Prot entry Q15293 (GeneID 5954).

Product Application Details	
Applications	Western Blot, Immunohistochemistry-Paraffin, Immunohistochemistry, Immunoprecipitation
Recommended Dilutions	Western Blot 1:2000-1:0000, Immunohistochemistry 1:1000-1:5000, Immunoprecipitation 2-10 ug/mg lysate, Immunohistochemistry-Paraffin 1:1000-1:5000
Application Notes	Epitope retrieval with citrate buffer pH 6.0 is recommended for FFPE tissue sections.



Images

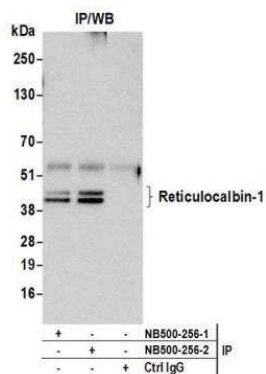
Western Blot: RCN1 Antibody [NB500-256] - Detection of human and mouse Reticulocalbin-1 by western blot. Samples: Whole cell lysate (50 ug) from HeLa, HEK293T, and mouse NIH 3T3 cells prepared using NETN lysis buffer. Antibody: Affinity purified rabbit anti-Reticulocalbin-1 antibody NB500-256 used for WB at 0.4 ug/ml. Detection: Chemiluminescence with an exposure time of 30 seconds.



Immunohistochemistry-Paraffin: RCN1 Antibody [NB500-256] - Section of human colon carcinoma. Antibody: Affinity purified rabbit anti-RCN1 (NB500-256). Detection: DAB



Immunoprecipitation: RCN1 Antibody [NB500-256] - Detection of human Reticulocalbin-1 by western blot of immunoprecipitates. Samples: Whole cell lysate (0.5 or 1.0 mg per IP reaction; 20% of IP loaded) from HeLa cells prepared using NETN lysis buffer. Antibodies: Affinity purified rabbit anti-Reticulocalbin-1 antibody NB500-256 (lot NB500-256-3) used for IP at 6 ug per reaction. Reticulocalbin-1 was also immunoprecipitated by a previous lot of this antibody (lot NB500-256-2). For blotting immunoprecipitated Reticulocalbin-1, NB500-256 was used at 1 ug/ml. Detection: Chemiluminescence with an exposure time of 30 seconds.



Publications

Cui D, Dougherty KJ, Machacek DW et al. Divergence between motoneurons: gene expression profiling provides a molecular characterization of functionally discrete somatic and autonomic motoneurons. *Physiol Genomics* 2006-02-01 [PMID: 16317082]



Novus Biologicals USA

10730 E. Briarwood Avenue
Centennial, CO 80112
USA
Phone: 303.730.1950
Toll Free: 1.888.506.6887
Fax: 303.730.1966
nb-customerservice@bio-techne.com

Bio-Techne Canada

21 Canmotor Ave
Toronto, ON M8Z 4E6
Canada
Phone: 905.827.6400
Toll Free: 855.668.8722
Fax: 905.827.6402
canada.inquires@bio-techne.com

Bio-Techne Ltd

19 Barton Lane
Abingdon Science Park
Abingdon, OX14 3NB, United Kingdom
Phone: (44) (0) 1235 529449
Free Phone: 0800 37 34 15
Fax: (44) (0) 1235 533420
info.EMEA@bio-techne.com

General Contact Information

www.novusbio.com
Technical Support: nb-technical@bio-techne.com
Orders: nb-customerservice@bio-techne.com
General: novus@novusbio.com

Products Related to NB500-256

NB800-PC1	HeLa Whole Cell Lysate
NBP2-33376H	Blue Marker Antibody (6F4-F6) [HRP]
HAF008	Goat anti-Rabbit IgG Secondary Antibody [HRP]
NB7160	Goat anti-Rabbit IgG (H+L) Secondary Antibody [HRP]
NBP2-24891	Rabbit IgG Isotype Control

Limitations

This product is for research use only and is not approved for use in humans or in clinical diagnosis. Primary Antibodies are guaranteed for 1 year from date of receipt.

For more information on our 100% guarantee, please visit www.novusbio.com/guarantee

Earn gift cards/discounts by submitting a review: www.novusbio.com/reviews/submit/NB500-256

Earn gift cards/discounts by submitting a publication using this product:

www.novusbio.com/publications

