

# Product Datasheet

## CTCF Antibody NB500-177

Unit Size: 0.1 ml

Store at 4C. Do not freeze.

[www.novusbio.com](http://www.novusbio.com)



[technical@novusbio.com](mailto:technical@novusbio.com)

### Publications: 2

Protocols, Publications, Related Products, Reviews, Research Tools and Images at:  
[www.novusbio.com/NB500-177](http://www.novusbio.com/NB500-177)

Updated 9/9/2025 v.20.1

Earn rewards for product  
reviews and publications.

Submit a publication at [www.novusbio.com/publications](http://www.novusbio.com/publications)

Submit a review at [www.novusbio.com/reviews/destination/NB500-177](http://www.novusbio.com/reviews/destination/NB500-177)



**NB500-177****CTCF Antibody****Product Information**

<b>Unit Size</b>	0.1 ml
<b>Concentration</b>	0.2 mg/ml
<b>Storage</b>	Store at 4C. Do not freeze.
<b>Clonality</b>	Polyclonal
<b>Preservative</b>	0.09% Sodium Azide
<b>Isotype</b>	IgG
<b>Purity</b>	Immunogen affinity purified
<b>Buffer</b>	TBS and 0.1% BSA

**Product Description**

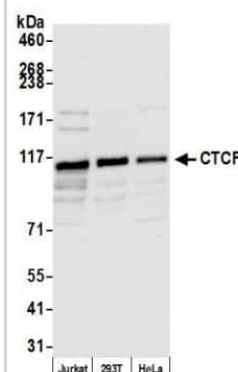
<b>Description</b>	Novus Biologicals Rabbit CTCF Antibody (NB500-177) is a polyclonal antibody validated for use in IHC, WB, IP and ChIP. Anti-CTCF Antibody: Cited in 2 publications. All Novus Biologicals antibodies are covered by our 100% guarantee.
<b>Host</b>	Rabbit
<b>Gene ID</b>	10664
<b>Gene Symbol</b>	CTCF
<b>Species</b>	Human, Mouse
<b>Immunogen</b>	The immunogen recognized by this antibody maps to a region between residues 650 and 700 of human CCCTC-binding factor using the numbering given in entry NP_006556.1 (GeneID 10664).

**Product Application Details**

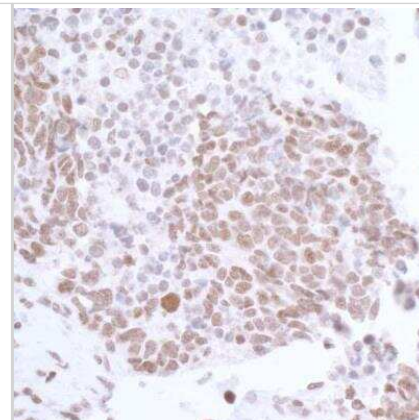
<b>Applications</b>	Western Blot, Immunohistochemistry-Paraffin, Immunohistochemistry, Immunoprecipitation, Chromatin Immunoprecipitation (ChIP)
<b>Recommended Dilutions</b>	Western Blot 1:2500-1:10000, Immunohistochemistry 1:500 - 1:2000, Immunoprecipitation 2-10 ug/mg lysate, Immunohistochemistry-Paraffin 1:500 - 1:2000, Chromatin Immunoprecipitation (ChIP) 1:10-1:500
<b>Application Notes</b>	Epitope retrieval with Tris-EDTA pH9.0 is recommended for FFPE tissue sections. Chip, WB, IP reactivity reported in (PMID: 24741094).

**Images**

Western Blot: CTCF Antibody [NB500-177] - Detection of human CTCF by western blot. Samples: Whole cell lysate (50 ug) from Jurkat, HEK293T, and HeLa cells prepared using NETN lysis buffer. Antibody: Affinity purified rabbit anti-CTCF antibody NB500-177 used for WB at 0.02 ug/ml. Detection: Chemiluminescence with an exposure time of 10 seconds.

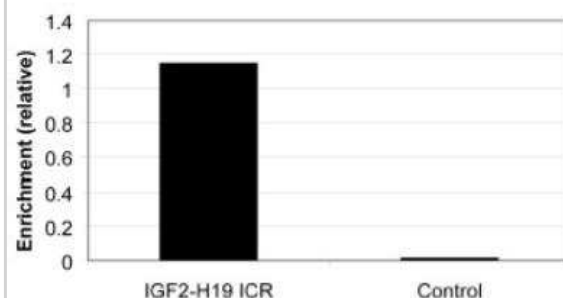


**Immunohistochemistry-Paraffin: CTCF Antibody [NB500-177]** - Section of human small cell lung cancer. Antibody: Affinity purified rabbit anti-CTCF antibody (NB500-177) used at 1:1000. Secondary: HRP-conjugated goat anti-rabbit IgG.

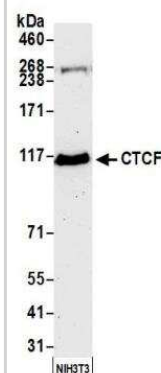


**Chromatin Immunoprecipitation: CTCF Antibody [NB500-177]** - Analysis of Human CTCF by Chromatin Immunoprecipitation (ChIP). Primary human fibroblasts from lung ( $5 \times 10^7$  cells) were cross-linked with formaldehyde, sonicated, and immunoprecipitated with 20 micrograms of rabbit anti-CTCF antibody NB500-177. The resulting ChIP DNA was quantified using real-time PCR with primers against the IGF2-H19 ICR or a control region in the HoxA cluster.

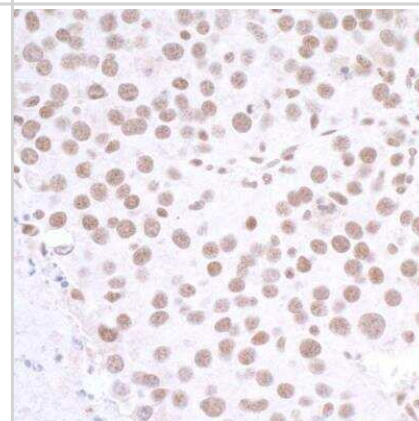
**CTCF ChIP (Fibroblasts)**



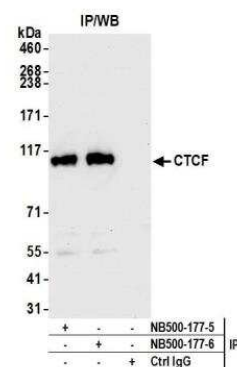
**Western Blot: CTCF Antibody [NB500-177]** - Detection of mouse CTCF by western blot. Samples: Whole cell lysate (50 ug) from NIH 3T3 cells prepared using NETN lysis buffer. Antibody: Affinity purified rabbit anti-CTCF antibody NB500-177 used for WB at 0.02 ug/ml. Detection: Chemiluminescence with an exposure time of 75 seconds.



**Immunohistochemistry-Paraffin: CTCF Antibody [NB500-177]** - Section of mouse renal cell carcinoma. Antibody: Affinity purified rabbit anti-CTCF antibody (NB500-177) used at 1:1000. Secondary: HRP-conjugated goat anti-rabbit IgG.



Immunoprecipitation: CTCF Antibody [NB500-177] - Detection of human CTCF by western blot of immunoprecipitates. Samples: Whole cell lysate (1.0 mg per IP reaction; 20% of IP loaded) from Jurkat cells prepared using NETN lysis buffer. Antibodies: Affinity purified rabbit anti-CTCF antibody NB500-177 (lot NB500-177-6) used for IP at 6 ug per reaction. CTCF was also immunoprecipitated by a previous lot of this antibody (lot NB500-177-5). For blotting immunoprecipitated CTCF, NB500-177 was used at 0.02 ug/ml. Detection: Chemiluminescence with an exposure time of 10 seconds.



## Publications

Rivero-Hinojosa S, Pugacheva EM, Kang S et al. The combined action of CTCF and its testis-specific paralog BORIS is essential for spermatogenesis Nature Communications 2021-06-22 [PMID: 34158481] (Chemotaxis, Immunoprecipitation, Western Blot, Human)

Martinez FP, Cruz R, Lu F et al. CTCF Binding to the First Intron of the Major Immediate-Early (MIE) Gene of Human Cytomegalovirus (HCMV) Negatively Regulates MIE Gene Expression and HCMV Replication. J. Virol. 2014-04-16 [PMID: 24741094] (WB, Chemotaxis, IP, Human)



### **Novus Biologicals USA**

10730 E. Briarwood Avenue  
Centennial, CO 80112  
USA  
Phone: 303.730.1950  
Toll Free: 1.888.506.6887  
Fax: 303.730.1966  
nb-customerservice@bio-techne.com

### **Bio-Techne Canada**

21 Canmotor Ave  
Toronto, ON M8Z 4E6  
Canada  
Phone: 905.827.6400  
Toll Free: 855.668.8722  
Fax: 905.827.6402  
canada.inquires@bio-techne.com

### **Bio-Techne Ltd**

19 Barton Lane  
Abingdon Science Park  
Abingdon, OX14 3NB, United Kingdom  
Phone: (44) (0) 1235 529449  
Free Phone: 0800 37 34 15  
Fax: (44) (0) 1235 533420  
info.EMEA@bio-techne.com

### **General Contact Information**

www.novusbio.com  
Technical Support: nb-technical@bio-techne.com  
Orders: nb-customerservice@bio-techne.com  
General: novus@novusbio.com

### **Products Related to NB500-177**

---

HAF008	Goat anti-Rabbit IgG Secondary Antibody [HRP]
NB7160	Goat anti-Rabbit IgG (H+L) Secondary Antibody [HRP]
NBP2-24891	Rabbit IgG Isotype Control
H00010664-P01-2ug	Recombinant Human CTCF GST (N-Term) Protein

---

### **Limitations**

This product is for research use only and is not approved for use in humans or in clinical diagnosis. Primary Antibodies are guaranteed for 1 year from date of receipt.

For more information on our 100% guarantee, please visit [www.novusbio.com/guarantee](http://www.novusbio.com/guarantee)

Earn gift cards/discounts by submitting a review: [www.novusbio.com/reviews/submit/NB500-177](http://www.novusbio.com/reviews/submit/NB500-177)

Earn gift cards/discounts by submitting a publication using this product:  
[www.novusbio.com/publications](http://www.novusbio.com/publications)

