

Product Datasheet

CTCF Antibody - BSA Free

NB500-175

Unit Size: 100 ul

Store at 4C. Do not freeze.

www.novusbio.com



technical@novusbio.com

Protocols, Publications, Related Products, Reviews, Research Tools and Images at:
www.novusbio.com/NB500-175

Updated 9/9/2025 v.20.1

Earn rewards for product
reviews and publications.

Submit a publication at www.novusbio.com/publications

Submit a review at www.novusbio.com/reviews/destination/NB500-175



NB500-175

CTCF Antibody - BSA Free

Product Information

| | |
|----------------------|---------------------------------------|
| Unit Size | 100 ul |
| Concentration | 1.0 mg/ml |
| Storage | Store at 4C. Do not freeze. |
| Clonality | Polyclonal |
| Preservative | 0.09% Sodium Azide |
| Isotype | IgG |
| Purity | Immunogen affinity purified |
| Buffer | Tris-Citrate/Phosphate (pH 7.0 - 8.0) |

Product Description

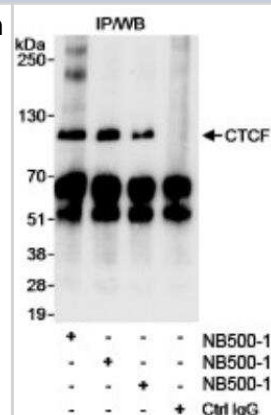
| | |
|--------------------|--|
| Description | Novus Biologicals Rabbit CTCF Antibody - BSA Free (NB500-175) is a polyclonal antibody validated for use in IP. All Novus Biologicals antibodies are covered by our 100% guarantee. |
| Host | Rabbit |
| Gene ID | 10664 |
| Gene Symbol | CTCF |
| Species | Human |
| Immunogen | The immunogen recognized by this antibody maps to a region between residues 150 and 200 of human CCCTC-binding factor using the numbering given in entry NP_006556.1 (GeneID 10664). |

Product Application Details

| | |
|------------------------------|---|
| Applications | Immunoprecipitation, Western Blot (Negative) |
| Recommended Dilutions | Immunoprecipitation 2-5 ug/mg lysate, Western Blot (Negative) |
| Application Notes | NB 500-175 may be used for immunoprecipitation. Not recommended for Western Blot, use NB 500-177. *The investigator should determine the optimal working dilution for a specific application. |

Images

Immunoprecipitation: CTCF Antibody [NB500-175] - Immunoprecipitation of Human CTCF. Samples: Whole cell lysate (1 mg for IP; 1/4 of IP loaded/lane) from MCF7 cells. Antibodies: Affinity purified rabbit anti-CTCF antibody NB500-175 used at 3 mcg/mg lysate for IP. Human CTCF was also immunoprecipitated using affinity purified rabbit anti-CTCF antibodies NB500-177 and NB500-194 CTCF was blotted using NB500-177 at 0.03 mcg/ml. Detection: Chemiluminescence with exposure times of 10 seconds.





Novus Biologicals USA

10730 E. Briarwood Avenue
Centennial, CO 80112
USA
Phone: 303.730.1950
Toll Free: 1.888.506.6887
Fax: 303.730.1966
nb-customerservice@bio-techne.com

Bio-Techne Canada

21 Canmotor Ave
Toronto, ON M8Z 4E6
Canada
Phone: 905.827.6400
Toll Free: 855.668.8722
Fax: 905.827.6402
canada.inquires@bio-techne.com

Bio-Techne Ltd

19 Barton Lane
Abingdon Science Park
Abingdon, OX14 3NB, United Kingdom
Phone: (44) (0) 1235 529449
Free Phone: 0800 37 34 15
Fax: (44) (0) 1235 533420
info.EMEA@bio-techne.com

General Contact Information

www.novusbio.com
Technical Support: nb-technical@bio-techne.com
Orders: nb-customerservice@bio-techne.com
General: novus@novusbio.com

Products Related to NB500-175

| | |
|------------|---|
| NBL1-11871 | IMP2/IGF2BP2 Overexpression Lysate |
| HAF008 | Goat anti-Rabbit IgG Secondary Antibody [HRP] |
| NB7160 | Goat anti-Rabbit IgG (H+L) Secondary Antibody [HRP] |
| NBP2-24891 | Rabbit IgG Isotype Control |

Limitations

This product is for research use only and is not approved for use in humans or in clinical diagnosis. Primary Antibodies are guaranteed for 1 year from date of receipt.

For more information on our 100% guarantee, please visit www.novusbio.com/guarantee

Earn gift cards/discounts by submitting a review: www.novusbio.com/reviews/submit/NB500-175

Earn gift cards/discounts by submitting a publication using this product:
www.novusbio.com/publications

