

Product Datasheet

LIMPII/SR-B2 Antibody - BSA Free NB400-129

Unit Size: 0.1 ml

Aliquot and store at -20C or -80C. Avoid freeze-thaw cycles.

www.novusbio.com



technical@novusbio.com

Reviews: 1 **Publications: 29**

Protocols, Publications, Related Products, Reviews, Research Tools and Images at:
www.novusbio.com/NB400-129

Updated 9/9/2025 v.20.1

**Earn rewards for product
reviews and publications.**

Submit a publication at www.novusbio.com/publications

Submit a review at www.novusbio.com/reviews/destination/NB400-129

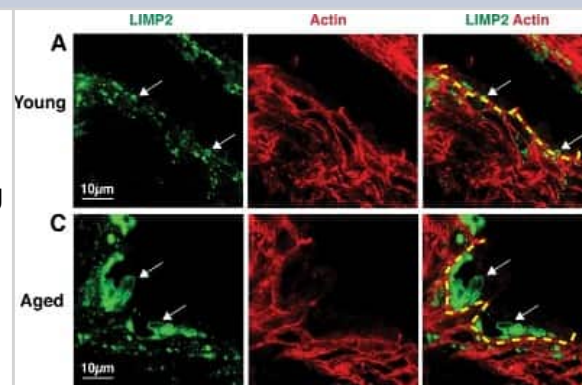


NB400-129**LIMP2/SR-B2 Antibody - BSA Free**

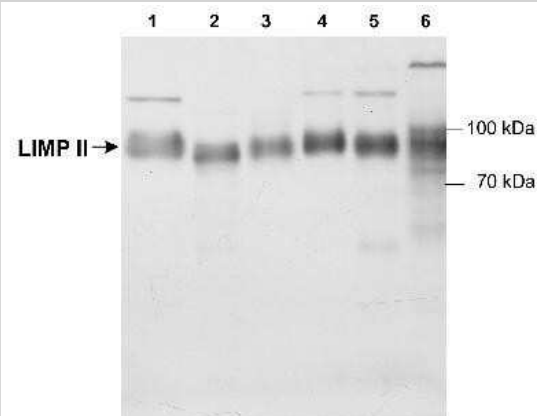
Product Information	
Unit Size	0.1 ml
Concentration	This product is unpurified. The exact concentration of antibody is not quantifiable.
Storage	Aliquot and store at -20C or -80C. Avoid freeze-thaw cycles.
Clonality	Polyclonal
Preservative	0.05% Sodium Azide
Isotype	IgG
Purity	Unpurified
Buffer	Whole antisera
Target Molecular Weight	85 kDa
Product Description	
Description	Novus Biologicals Rabbit LIMP2/SR-B2 Antibody - BSA Free (NB400-129) is a polyclonal antibody validated for use in IHC, WB, ICC/IF, Simple Western and IP. Anti-LIMP2/SR-B2 Antibody: Cited in 26 publications. All Novus Biologicals antibodies are covered by our 100% guarantee.
Host	Rabbit
Gene ID	950
Gene Symbol	SCARB2
Species	Human, Mouse, Rat, Canine, Primate
Marker	Lysosome Marker
Immunogen	A C-terminal synthetic peptide made to the mouse LIMP2/Igp85 protein sequence. [UniProt# O35114]
Product Application Details	
Applications	Western Blot, Simple Western, Immunohistochemistry-Paraffin, Immunocytochemistry/ Immunofluorescence, Immunohistochemistry, Immunoprecipitation
Recommended Dilutions	Western Blot 1:1000, Simple Western, Immunohistochemistry 1:200, Immunocytochemistry/ Immunofluorescence 1:50-1:250, Immunoprecipitation 1:100, Immunohistochemistry-Paraffin reported in scientific literature (PMID 23863627)
Application Notes	In Western Blot, a band is observed at ~85 kDa. The observed molecular weight of the protein may vary from the listed predicted molecular weight due to post translational modifications, post translation cleavages, relative charges, and other experimental factors.

Images

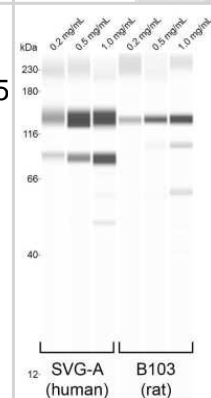
Immunohistochemistry-Paraffin: LIMPII/SR-B2 Antibody [NB400-129] - Comparison of LIMP2-positive organelles in young (A) and aged (C) rat urothelium. LIMP2-positive structures (green) shown in umbrella cells (delineated by dashed yellow line). Rhodamine phalloidin (red), which labels the cortical actin cytoskeleton, was used to show cell borders. Umbrella cells show an apparent, age-related increase in LIMP2 staining (white arrows). Image collected and cropped by CiteAb from the following publication (<https://dx.plos.org/10.1371/journal.pone.0198817>), licensed under a CC-BY license.



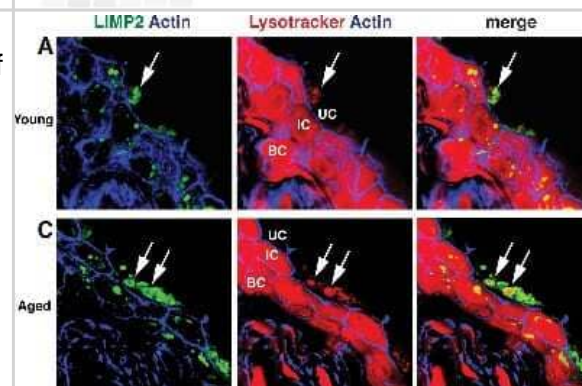
Western Blot: LIMPII/SR-B2 Antibody [NB400-129] - Detection of LIMP II (~85 kDa) in Lane 1: Rat cardiac fibroblasts (RCF), 3T3 mouse fibroblasts (2), canine lung lysate (3), RCF treated with angiotensin II (4), and H2O2 (5), HEPG2 human liver lysate (6).



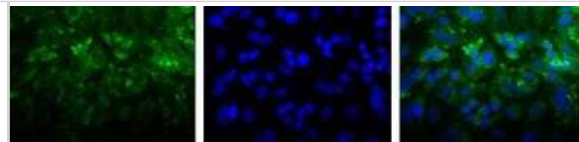
Simple Western: LIMPII/SR-B2 Antibody [NB400-129] - CHAPS-solubilized SVG-A (human astrocyte cells) and B103 (rat neuroblastoma cells) cell lysates, at the indicated concentrations, were probed with a 1:25 dilution of antibody. Image from verified customer review.



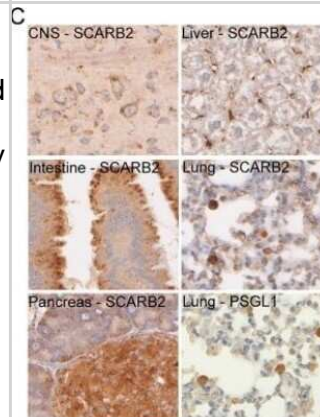
Immunohistochemistry-Paraffin: LIMPII/SR-B2 Antibody [NB400-129] - Lysotracker Red accumulates in endolysosomes. Immunofluorescence of young (A) and aged (C) urothelium incubated with Lysotracker Red (red) and co-stained with antibodies to LIMP2 (green structures) and phalloidin (blue), which labels the cortical actin cytoskeleton. Large, Lysotracker Red-positive endolysosomes are marked with white arrows. Underlying intermediate (IC) and basal cells (BC) show non-specific cytoplasmic Lysotracker Red staining that did not appear in umbrella cells (UC). Image collected and cropped by CiteAb from the following publication (<https://dx.plos.org/10.1371/journal.pone.0198817>), licensed under a CC-BY license.



Immunocytochemistry/Immunofluorescence: LIMPII/SR-B2 Antibody [NB400-129] - Detection of LIMPII/lpg85 (Green) in Hela cells using NB400-129. Nuclei (Blue) are counterstained using Hoechst 33258.



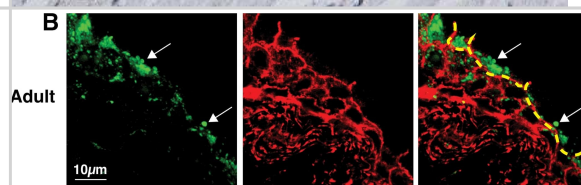
Immunohistochemistry: LIMPII/SR-B2 Antibody [NB400-129] - Substitution V135A enhances PSGL1 usage by mouse-adapted EV-A71. LIMPII/SR-B2 (SCARB2) and PSGL1 in various organs tissues assessed by means of immunohistochemistry. SCARB2 protein expression in CNS, intestine, pancreas, liver and lung. Image collected and cropped by CiteAb from the following publication (<https://pubmed.ncbi.nlm.nih.gov/31339457/>) licensed under a CC-BY license.



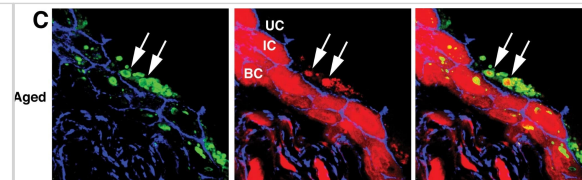
Immunohistochemistry: LIMPII/SR-B2 Antibody [NB400-129] - Staining of LIMP II in rat infarctzone tissue with a DAB detection system.



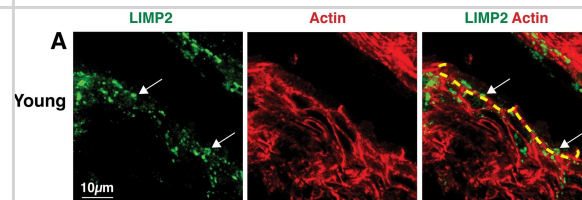
Immunocytochemistry/ Immunofluorescence: LIMPII/SR-B2 Antibody [NB400-129] - Comparison of LIMP2-positive organelles in young (A), adult (B), & aged (C) rat urothelium. LIMP2-positive structures (green) shown in umbrella cells (delineated by dashed yellow line). Rhodamine phalloidin (red), which labels the cortical actin cytoskeleton, was used to show cell borders. Umbrella cells show an apparent, age-related increase in LIMP2 staining (white arrows). Image collected & cropped by CiteAb from the following publication (<https://pubmed.ncbi.nlm.nih.gov/29883476/>), licensed under a CC-BY license. Not internally tested by Novus Biologicals.



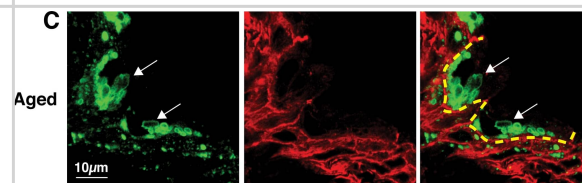
Immunocytochemistry/ Immunofluorescence: LIMPII/SR-B2 Antibody [NB400-129] - Lysotracker Red accumulates in endolysosomes. Immunofluorescence of young (A), adult (B), & aged (C) urothelium incubated with Lysotracker Red (red) & co-stained with antibodies to LIMP2 (green structures) & phalloidin (blue), which labels the cortical actin cytoskeleton. Large, Lysotracker Red-positive endolysosomes are marked with white arrows. Underlying intermediate (IC) & basal cells (BC) show non-specific cytoplasmic Lysotracker Red staining that did not appear in umbrella cells (UC). Image collected & cropped by CiteAb from the following publication (<https://pubmed.ncbi.nlm.nih.gov/29883476>), licensed under a CC-BY license. Not internally tested by Novus Biologicals.



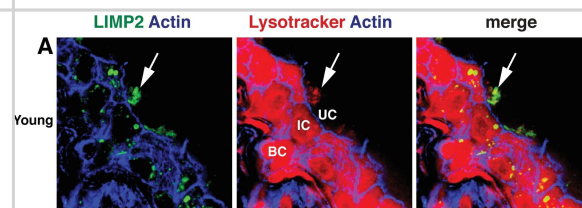
Immunocytochemistry/ Immunofluorescence: LIMPII/SR-B2 Antibody [NB400-129] - Comparison of LIMP2-positive organelles in young (A), adult (B), & aged (C) rat urothelium. LIMP2-positive structures (green) shown in umbrella cells (delineated by dashed yellow line). Rhodamine phalloidin (red), which labels the cortical actin cytoskeleton, was used to show cell borders. Umbrella cells show an apparent, age-related increase in LIMP2 staining (white arrows). Image collected & cropped by CiteAb from the following publication (<https://pubmed.ncbi.nlm.nih.gov/29883476>), licensed under a CC-BY license. Not internally tested by Novus Biologicals.



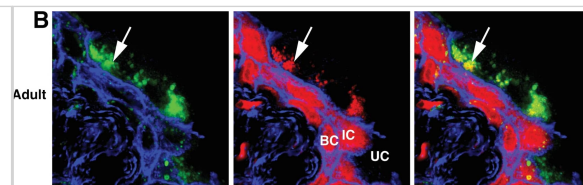
Immunocytochemistry/ Immunofluorescence: LIMPII/SR-B2 Antibody [NB400-129] - Comparison of LIMP2-positive organelles in young (A), adult (B), & aged (C) rat urothelium. LIMP2-positive structures (green) shown in umbrella cells (delineated by dashed yellow line). Rhodamine phalloidin (red), which labels the cortical actin cytoskeleton, was used to show cell borders. Umbrella cells show an apparent, age-related increase in LIMP2 staining (white arrows). Image collected & cropped by CiteAb from the following publication (<https://pubmed.ncbi.nlm.nih.gov/29883476>), licensed under a CC-BY license. Not internally tested by Novus Biologicals.



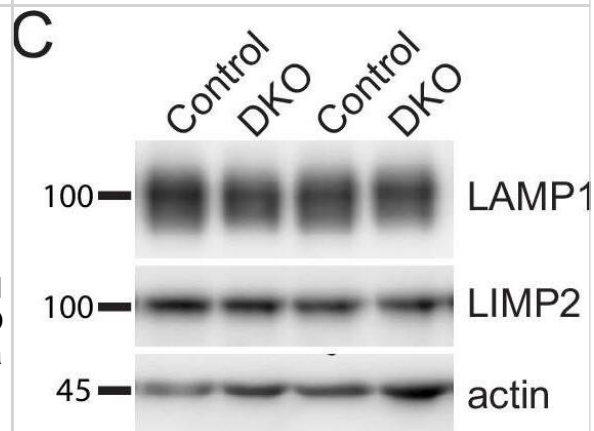
Immunocytochemistry/ Immunofluorescence: LIMPII/SR-B2 Antibody [NB400-129] - Lysotracker Red accumulates in endolysosomes. Immunofluorescence of young (A), adult (B), & aged (C) urothelium incubated with Lysotracker Red (red) & co-stained with antibodies to LIMP2 (green structures) & phalloidin (blue), which labels the cortical actin cytoskeleton. Large, Lysotracker Red-positive endolysosomes are marked with white arrows. Underlying intermediate (IC) & basal cells (BC) show non-specific cytoplasmic Lysotracker Red staining that did not appear in umbrella cells (UC). Image collected & cropped by CiteAb from the following publication (<https://pubmed.ncbi.nlm.nih.gov/29883476>), licensed under a CC-BY license. Not internally tested by Novus Biologicals.



Immunocytochemistry/ Immunofluorescence: LIMPII/SR-B2 Antibody [NB400-129] - Lysotracker Red accumulates in endolysosomes. Immunofluorescence of young (A), adult (B), & aged (C) urothelium incubated with Lysotracker Red (red) & co-stained with antibodies to LIMP2 (green structures) & phalloidin (blue), which labels the cortical actin cytoskeleton. Large, Lysotracker Red-positive endolysosomes are marked with white arrows. Underlying intermediate (IC) & basal cells (BC) show non-specific cytoplasmic Lysotracker Red staining that did not appear in umbrella cells (UC). Image collected & cropped by CiteAb from the following publication (<https://pubmed.ncbi.nlm.nih.gov/29883476>), licensed under a CC-BY license. Not internally tested by Novus Biologicals.



Loss of tomosyns does not affect levels of endo-lysosomal proteins. (A) Representative images of LAMP1 immunostaining in DIV14 neurons. Scale bar 20 μ m. (B) Quantification of the mean LAMP1 intensity in control and double knockout (DKO) neurons from confocal microscopy images as exemplified in (A). Data are shown as mean \pm SD and were analyzed using a two-tailed unpaired t-test. $n=10$ neurons/genotype. ns: not significant. (C) Levels of LAMP1 and LIMP2 as detected by western blot (WB) are normal in DKO neurons. Equal loading was verified by immunodetection of actin. (D) Quantification of LAMP1 and LIMP2 signal from WB images exemplified in (C). Levels of LAMP1 and LIMP2 in DKO were normalized to control levels in the corresponding culture. DKO data are presented as mean \pm SD and were analyzed using one sample t-test. $n=9$ samples/genotype from three culture preparations. ns: not significant. Figure 2—figure supplement 3—source data 1. Uncropped western blot (WB) images for Figure 2—figure supplement 2C. Uncropped western blot (WB) images for Figure 2—figure supplement 2C. Image collected and cropped by CiteAb from the following open publication (<https://pubmed.ncbi.nlm.nih.gov/37695731>), licensed under a CC-BY license. Not internally tested by Novus Biologicals.



Publications

Gaspar P, Marques A, Ferraz M et al. LIMP-2 deficiency-associated glycolipid abnormalities in mice. *Biochimica et biophysica acta. Molecular and cell biology of lipids* 2025-07-08 [PMID: 40639771]

Subkhangulova A, Gonzalez-Lozano MA, Groffen AJA et al. Tomosyn affects dense core vesicle composition but not exocytosis in mammalian neurons *Elife* 2023-09-11 [PMID: 37695731] (Western Blot, Human)

Teranishi H, Tabata K, Saeki M, Umemoto T et Al. Identification of CUL4A-DDB1-WDFY1 as an E3 ubiquitin ligase complex involved in initiation of lysophagy *Cell Rep* 2022-09-14 [PMID: 36103833]

Su JH, Hong Y, Han CC, Yu J et Al. Dual action of macrophage miR-204 confines cyclosporine A-induced atherosclerosis *Br J Pharmacol* 2023-09-13 [PMID: 37702564]

Bing C, Di Fabrizio M, Burger D et al. Distinct ultrastructural phenotypes of glial and neuronal alpha-synuclein inclusions in multiple system atrophy *Brain* 2024-11-01 [PMID: 38696728]

Lukas Zierke, Daniel John, Marcel Gischke, Quang Trung Tran, Matthias Sendler, Frank Ulrich Weiss, Uwe T. Bornscheuer, Christoph Ritter, Markus M. Lerch, Ali A. Aghdassi Initiation of acute pancreatitis in mice is independent of fusion between lysosomes and zymogen granules *Cellular and Molecular Life Sciences: CMLS* 2024-05-06 [PMID: 38709385]

López-Begines S, Lavado-Roldán Á, Mesa-Cruz C et al. Neuronal lipofuscinosis caused by Kufs disease/CLN4DNAJC5 mutations but not by a CSP β /DNAJC5 deficiency *bioRxiv* 2023-05-11 (IHC, Mouse)

Jorge-Oliva M, Smits JFM, Wiersma VI et al. Granulovacuolar degeneration bodies are independently induced by tau and alpha -synuclein pathology *Alzheimer's research & therapy* 2022-12-14 [PMID: 36517915] (ICC/IF, IHC-P, Human)

Details:

Dilution used for IHC-P 1:300, for ICC/IF

van der Lienden MJC, Aten J, Boot R, van Eijk M Glucocerebrosidase in cultured cells: extreme sensitivity for medium conditions *Thesis* 2022-01-01 (ICC/IF)

Gletten RB, Cantrell LS, Bhattacharya S, Schey KL Lens Aquaporin-5 Inserts Into Bovine Fiber Cell Plasma Membranes Via Unconventional Protein Secretion *Investigative ophthalmology & visual science* 2022-07-08 [PMID: 35816045]

Lee JH, Yang DS, Goulbourne CN et al. Faulty autolysosome acidification in Alzheimer's disease mouse models induces autophagic build-up of A beta in neurons, yielding senile plaques *Nature neuroscience* 2022-06-01 [PMID: 35654956] (ICC/IF, Mouse)

Bertolin J, Sanchez V, Ribera A et al. Treatment of skeletal and non-skeletal alterations of Mucopolysaccharidosis type IVA by AAV-mediated gene therapy *Nature communications* 2021-09-09 [PMID: 34504088] (IHC-P, Rat)

More publications at <http://www.novusbio.com/NB400-129>





Novus Biologicals USA

10730 E. Briarwood Avenue
Centennial, CO 80112
USA
Phone: 303.730.1950
Toll Free: 1.888.506.6887
Fax: 303.730.1966
nb-customerservice@bio-techne.com

Bio-Techne Canada

21 Canmotor Ave
Toronto, ON M8Z 4E6
Canada
Phone: 905.827.6400
Toll Free: 855.668.8722
Fax: 905.827.6402
canada.inquires@bio-techne.com

Bio-Techne Ltd

19 Barton Lane
Abingdon Science Park
Abingdon, OX14 3NB, United Kingdom
Phone: (44) (0) 1235 529449
Free Phone: 0800 37 34 15
Fax: (44) (0) 1235 533420
info.EMEA@bio-techne.com

General Contact Information

www.novusbio.com
Technical Support: nb-technical@bio-techne.com
Orders: nb-customerservice@bio-techne.com
General: novus@novusbio.com

Products Related to NB400-129

NB800-PC8	NIH 3T3 Whole Cell Lysate
NBP2-33376H	Blue Marker Antibody (6F4-F6) [HRP]
HAF008	Goat anti-Rabbit IgG Secondary Antibody [HRP]
NB7160	Goat anti-Rabbit IgG (H+L) Secondary Antibody [HRP]
NBP2-24891	Rabbit IgG Isotype Control

Limitations

This product is for research use only and is not approved for use in humans or in clinical diagnosis. Primary Antibodies are guaranteed for 1 year from date of receipt.

For more information on our 100% guarantee, please visit www.novusbio.com/guarantee

Earn gift cards/discounts by submitting a review: www.novusbio.com/reviews/submit/NB400-129

Earn gift cards/discounts by submitting a publication using this product:
www.novusbio.com/publications

