

Product Datasheet

Endothelial Lipase Antibody - BSA Free NB400-118

Unit Size: 0.1 ml

Store at 4C. Do not freeze.

www.novusbio.com



technical@novusbio.com

Publications: 2

Protocols, Publications, Related Products, Reviews, Research Tools and Images at:
www.novusbio.com/NB400-118

Updated 9/9/2025 v.20.1

Earn rewards for product
reviews and publications.

Submit a publication at www.novusbio.com/publications

Submit a review at www.novusbio.com/reviews/destination/NB400-118



NB400-118**Endothelial Lipase Antibody - BSA Free**

Product Information	
Unit Size	0.1 ml
Concentration	1 mg/ml
Storage	Store at 4C. Do not freeze.
Clonality	Polyclonal
Preservative	0.01% Sodium Azide
Isotype	IgG
Purity	Immunogen affinity purified
Buffer	Tris-Citrate/Phosphate (pH 7.0 - 8.0)

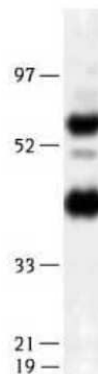
Product Description	
Description	Novus Biologicals Rabbit Endothelial Lipase Antibody - BSA Free (NB400-118) is a polyclonal antibody validated for use in WB, ELISA and ICC/IF. Anti-Endothelial Lipase Antibody: Cited in 2 publications. All Novus Biologicals antibodies are covered by our 100% guarantee.
Host	Rabbit
Gene ID	9388
Gene Symbol	LIPG
Species	Human, Mouse (Negative)
Reactivity Notes	Does not appear to recognize mouse.
Immunogen	An N-terminal synthetic peptide made to human Endothelial Lipase [UniProt# Q9Y5X9]

Product Application Details	
Applications	Western Blot, ELISA, Immunocytochemistry/ Immunofluorescence
Recommended Dilutions	Western Blot 1:500, ELISA 1:100-1:2000. Use reported in scientific literature (PMID 22383927), Immunocytochemistry/ Immunofluorescence 1:100
Application Notes	In Western blot this antibody recognizes a band at ~57 kDa, representing the mature, non-glycosylated form of endothelial lipase protein. Another band is seen at ~ 45 kDa, representing the proteolytic form of the protein. In ICC/IF, cytoplasmic staining was observed in HeLa cells.

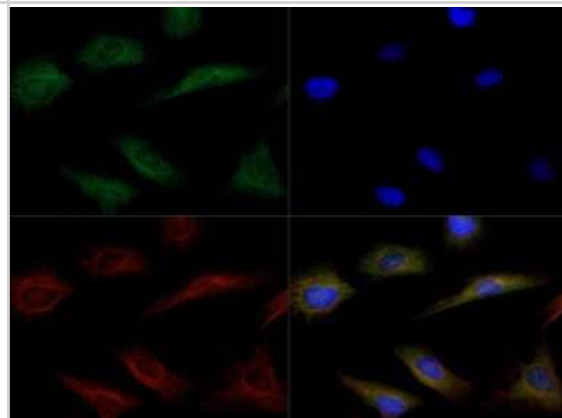


Images

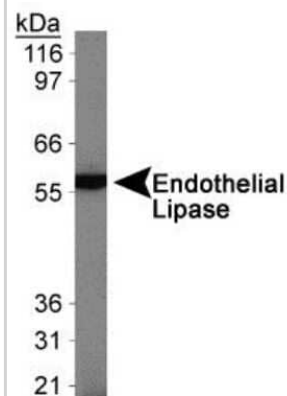
Western Blot: Endothelial Lipase Antibody [NB400-118] - Human endothelial lipase detected in transfected 293 lysates using NB 400-118. (MW 57 kD)



Immunocytochemistry/Immunofluorescence: Endothelial Lipase Antibody [NB400-118] - Antibody was tested in HeLa cells with Dylight 488 (green). Nuclei and alpha-tubulin were counterstained with DAPI (blue) and Dylight 550 (red).



Western Blot: Endothelial Lipase Antibody [NB400-118] - Analysis of Endothelial Lipase in ECV304 cells.



Publications

Edmondson AC, Brown RJ, Kathiresan S et al. Loss-of-function variants in endothelial lipase are a cause of elevated HDL cholesterol in humans. *J Clin Invest* 2009-04-01 [PMID: 19287092]

Riederer M, Trbusi M, Degoricija V, Frank S. Endothelial Lipase Plasma Levels are Increased in Patients With Significant Carotid Artery Stenosis and History of Neurological Impairment *J Clin Med Res* 2012-01-15 [PMID: 22383927] (ELISA, Human)

Procedures

Serum protocol for Endothelial Lipase Antibody (NB400-118)

Endothelial Lipase Antibody:

Western Blot Procedure

1. Heat diluted samples at 70 degrees Celcius for 10 minutes.
2. Load samples onto a 10% Bis-Tris gel.
3. Run gel for ~45 minutes at 200V.
4. Transfer gel to PVDF membrane at 45V for ~90 minutes.
5. Block the membrane overnight at 4 degrees Celcius, in blocking buffer [PBS + 0.2% Tween-20 + 5% milk], gently shaking.
6. Rinse the membrane twice, quickly, in PBS-T.
7. Wash the membrane in PBS-T 3 times for 5 minutes, each.
8. Incubate the membrane with primary antibody [NB 400-111 or NB 400-118] , diluted 1:500 in blocking buffer, for 1 hour at RT, gently shaking.
9. Rinse the membrane twice, quickly, in PBS-T.
10. Wash the membrane in PBS-T 3 times for 5 minutes, each.
11. Incubate the membrane with secondary antibody [NB 730-H], diluted 1:5,000 in blocking buffer, for 1 hour at RT, gently shaking.
12. Rinse the membrane twice, quickly, in PBS-T.
13. Wash the membrane in PBS-T 3 times for 5 minutes, each.
14. Detect protein using ECL, ~1 minute exposure.





Novus Biologicals USA

10730 E. Briarwood Avenue
Centennial, CO 80112
USA
Phone: 303.730.1950
Toll Free: 1.888.506.6887
Fax: 303.730.1966
nb-customerservice@bio-techne.com

Bio-Techne Canada

21 Canmotor Ave
Toronto, ON M8Z 4E6
Canada
Phone: 905.827.6400
Toll Free: 855.668.8722
Fax: 905.827.6402
canada.inquires@bio-techne.com

Bio-Techne Ltd

19 Barton Lane
Abingdon Science Park
Abingdon, OX14 3NB, United Kingdom
Phone: (44) (0) 1235 529449
Free Phone: 0800 37 34 15
Fax: (44) (0) 1235 533420
info.EMEA@bio-techne.com

General Contact Information

www.novusbio.com
Technical Support: nb-technical@bio-techne.com
Orders: nb-customerservice@bio-techne.com
General: novus@novusbio.com

Products Related to NB400-118

NBL1-12550	Endothelial Lipase Overexpression Lysate
NB400-118PEP	Endothelial Lipase Antibody Blocking Peptide
NBP2-33376H	Blue Marker Antibody (6F4-F6) [HRP]
HAF008	Goat anti-Rabbit IgG Secondary Antibody [HRP]
NB7160	Goat anti-Rabbit IgG (H+L) Secondary Antibody [HRP]
NBP2-24891	Rabbit IgG Isotype Control

Limitations

This product is for research use only and is not approved for use in humans or in clinical diagnosis. Primary Antibodies are guaranteed for 1 year from date of receipt.

For more information on our 100% guarantee, please visit www.novusbio.com/guarantee

Earn gift cards/discounts by submitting a review: www.novusbio.com/reviews/submit/NB400-118

Earn gift cards/discounts by submitting a publication using this product:
www.novusbio.com/publications



