

# Product Datasheet

## Endothelial Lipase Antibody - BSA Free NB400-111

Unit Size: 0.1 ml

Store at 4C. Do not freeze.

[www.novusbio.com](http://www.novusbio.com)



[technical@novusbio.com](mailto:technical@novusbio.com)

### Publications: 6

Protocols, Publications, Related Products, Reviews, Research Tools and Images at:  
[www.novusbio.com/NB400-111](http://www.novusbio.com/NB400-111)

Updated 9/9/2025 v.20.1

Earn rewards for product  
reviews and publications.

Submit a publication at [www.novusbio.com/publications](http://www.novusbio.com/publications)

Submit a review at [www.novusbio.com/reviews/destination/NB400-111](http://www.novusbio.com/reviews/destination/NB400-111)



**NB400-111****Endothelial Lipase Antibody - BSA Free**

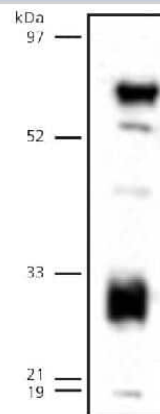
<b>Product Information</b>	
<b>Unit Size</b>	0.1 ml
<b>Concentration</b>	1 mg/ml
<b>Storage</b>	Store at 4C. Do not freeze.
<b>Clonality</b>	Polyclonal
<b>Preservative</b>	0.1% Sodium Azide
<b>Isotype</b>	IgG
<b>Purity</b>	Immunogen affinity purified
<b>Buffer</b>	Tris-Citrate/Phosphate (pH 7.0 - 8.0)

<b>Product Description</b>	
<b>Description</b>	Novus Biologicals Rabbit Endothelial Lipase Antibody - BSA Free (NB400-111) is a polyclonal antibody validated for use in IHC, WB and ICC/IF. Anti-Endothelial Lipase Antibody: Cited in 6 publications. All Novus Biologicals antibodies are covered by our 100% guarantee.
<b>Host</b>	Rabbit
<b>Gene ID</b>	9388
<b>Gene Symbol</b>	LIPG
<b>Species</b>	Human, Mouse (Negative)
<b>Reactivity Notes</b>	Predicted to react with monkey based on 100% sequence homology. Does not appear to recognize mouse.
<b>Immunogen</b>	A C-terminal synthetic peptide made to human Endothelial Lipase [UniProt# Q9Y5X9]

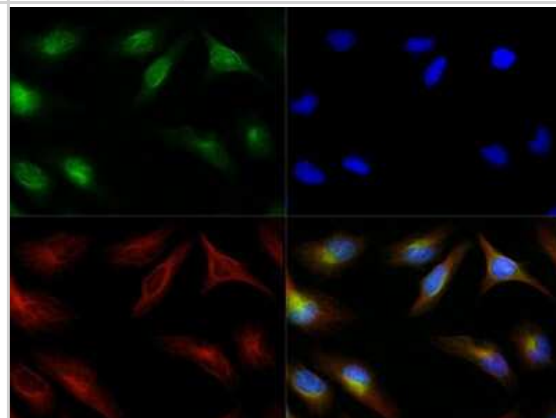
<b>Product Application Details</b>	
<b>Applications</b>	Western Blot, Immunocytochemistry/ Immunofluorescence, Immunohistochemistry, Immunohistochemistry-Frozen
<b>Recommended Dilutions</b>	Western Blot 1:500, Immunohistochemistry, Immunocytochemistry/ Immunofluorescence 1:100, Immunohistochemistry-Frozen reported in scientific literature (PMID 24244566)
<b>Application Notes</b>	In Western blot a band is observed at ~57 kDa, representing the mature, non-glycosylated form of endothelial lipase protein. Another band is observed at ~30 kDa, representing the proteolytic form of the protein. In ICC/IF cytoplasmic staining was observed in HeLa cells.

## Images

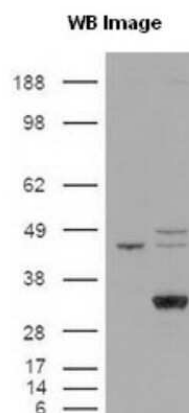
Western Blot: Endothelial Lipase Antibody [NB400-111] - Human endothelial lipase detected in transfected 293 lysates (MW 57 kDa)



Immunocytochemistry/Immunofluorescence: Endothelial Lipase Antibody [NB400-111] - Antibody was tested in HeLa cells with Dylight 488 (green). Nuclei and alpha-tubulin were counterstained with DAPI (blue) and Dylight 550 (red).



Western Blot: Endothelial Lipase Antibody [NB400-111] - Cells were transfected with the pCMV6-ENTRY control or pCMV6-ENTRY LIPG cDNA for 48 hrs and lysed. Equivalent amounts of cell lysates (5 ug per lane) were separated by SDS-PAGE and immunoblotted with anti-LIPG.



## Publications

Yang Y, Kuwano T, Lagor WR et al. Lipidomic analyses of female mice lacking hepatic lipase and endothelial lipase indicate selective modulation of plasma lipid species. *Lipids*. 2014-06-01 [PMID: 24777581] (WB, Human)

Robert J, Weber B, Frese L et al. A Three-Dimensional Engineered Artery Model for In Vitro Atherosclerosis Research. *PLoS One*. 2013-11-14 [PMID: 24244566] (IHC-Fr, ICC/IF, Human)

Essaji Y, Yang Y, Albert CJ et al. Hydrolysis Products Generated by Lipoprotein Lipase and Endothelial Lipase Differentially Impact THP-1 Macrophage Cell Signalling Pathways. *Lipids* 2013-06-22 [PMID: 23794138] (WB, Human)

Razzaghi H, Tempczyk-Russell A, Haubold K et al. Genetic and Structure-Function Studies of Missense Mutations in Human Endothelial Lipase *PLoS One* 2013-01-01 [PMID: 23536757] (WB, Human)

Wiersma H, Gatti A, Nijstad N et al. Hepatic SR-BI, not endothelial lipase, expression determines biliary cholesterol secretion in mice. *J Lipid Res*;50(8):1571-1580. 2009-01-01 [PMID: 19252221]

Nijstad N, Wiersma H, Gautier T et al. Scavenger Receptor BI-mediated Selective Uptake Is Required for the Remodeling of High Density Lipoprotein by Endothelial Lipase. *J Biol Chem*;284(10):6093-6100. 2009-01-01 [PMID: 19136670] (WB, Human)



## Procedures

### Western Blot protocol for Endothelial Lipase Antibody (NB400-111)

Endothelial Lipase Antibody:

Western Blot Procedure

1. Heat diluted samples at 70 degrees Celcius for 10 minutes.
2. Load samples onto a 10% Bis-Tris gel.
3. Run gel for ~45 minutes at 200V.
4. Transfer gel to PVDF membrane at 45V for ~90 minutes.
5. Block the membrane overnight at 4 degrees Celcius, in blocking buffer [PBS + 0.2% Tween-20 + 5% milk], gently shaking.
6. Rinse the membrane twice, quickly, in PBS-T.
7. Wash the membrane in PBS-T 3 times for 5 minutes, each.
8. Incubate the membrane with primary antibody [NB 400-111 or NB 400-118] , diluted 1:500 in blocking buffer, for 1 hour at RT, gently shaking.
9. Rinse the membrane twice, quickly, in PBS-T.
10. Wash the membrane in PBS-T 3 times for 5 minutes, each.
11. Incubate the membrane with secondary antibody [NB 730-H], diluted 1:5,000 in blocking buffer, for 1 hour at RT, gently shaking.
12. Rinse the membrane twice, quickly, in PBS-T.
13. Wash the membrane in PBS-T 3 times for 5 minutes, each.
14. Detect protein using ECL, ~1 minute exposure.





### **Novus Biologicals USA**

10730 E. Briarwood Avenue  
Centennial, CO 80112  
USA  
Phone: 303.730.1950  
Toll Free: 1.888.506.6887  
Fax: 303.730.1966  
nb-customerservice@bio-techne.com

### **Bio-Techne Canada**

21 Canmotor Ave  
Toronto, ON M8Z 4E6  
Canada  
Phone: 905.827.6400  
Toll Free: 855.668.8722  
Fax: 905.827.6402  
canada.inquires@bio-techne.com

### **Bio-Techne Ltd**

19 Barton Lane  
Abingdon Science Park  
Abingdon, OX14 3NB, United Kingdom  
Phone: (44) (0) 1235 529449  
Free Phone: 0800 37 34 15  
Fax: (44) (0) 1235 533420  
info.EMEA@bio-techne.com

### **General Contact Information**

www.novusbio.com  
Technical Support: nb-technical@bio-techne.com  
Orders: nb-customerservice@bio-techne.com  
General: novus@novusbio.com

### **Products Related to NB400-111**

---

NBL1-12550	Endothelial Lipase Overexpression Lysate
NB400-111PEP	Endothelial Lipase Antibody Blocking Peptide
NBP2-33376H	Blue Marker Antibody (6F4-F6) [HRP]
HAF008	Goat anti-Rabbit IgG Secondary Antibody [HRP]
NB7160	Goat anti-Rabbit IgG (H+L) Secondary Antibody [HRP]
NBP2-24891	Rabbit IgG Isotype Control

---

### **Limitations**

This product is for research use only and is not approved for use in humans or in clinical diagnosis. Primary Antibodies are guaranteed for 1 year from date of receipt.

For more information on our 100% guarantee, please visit [www.novusbio.com/guarantee](http://www.novusbio.com/guarantee)

Earn gift cards/discounts by submitting a review: [www.novusbio.com/reviews/submit/NB400-111](http://www.novusbio.com/reviews/submit/NB400-111)

Earn gift cards/discounts by submitting a publication using this product:  
[www.novusbio.com/publications](http://www.novusbio.com/publications)



