

# Product Datasheet

## CrkL Antibody NB300-884-100ug

Unit Size: 100 ug

Store at -20C. Avoid freeze-thaw cycles.

[www.novusbio.com](http://www.novusbio.com)



[technical@novusbio.com](mailto:technical@novusbio.com)

### Publications: 1

Protocols, Publications, Related Products, Reviews, Research Tools and Images at:  
[www.novusbio.com/NB300-884](http://www.novusbio.com/NB300-884)

Updated 9/9/2025 v.20.1

Earn rewards for product  
reviews and publications.

Submit a publication at [www.novusbio.com/publications](http://www.novusbio.com/publications)

Submit a review at [www.novusbio.com/reviews/destination/NB300-884](http://www.novusbio.com/reviews/destination/NB300-884)



**NB300-884-100ug**

CrkL Antibody

Product Information	
<b>Unit Size</b>	100 ug
<b>Concentration</b>	0.5 mg/ml
<b>Storage</b>	Store at -20C. Avoid freeze-thaw cycles.
<b>Clonality</b>	Polyclonal
<b>Preservative</b>	0.02% Sodium Azide
<b>Isotype</b>	IgG
<b>Purity</b>	Immunogen affinity purified
<b>Buffer</b>	Tris saline (20 mM Tris pH 7.3, 150 mM NaCl), 0.5% BSA
<b>Target Molecular Weight</b>	34 kDa

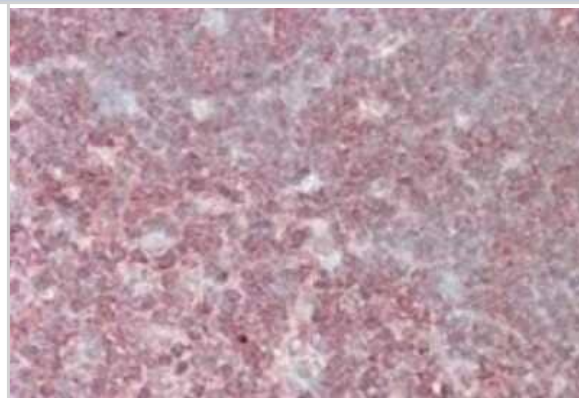
Product Description	
<b>Description</b>	Novus Biologicals Goat CrkL Antibody (NB300-884) is a polyclonal antibody validated for use in IHC, WB, ELISA, Flow and ICC/IF. Anti-CrkL Antibody: Cited in 1 publication. All Novus Biologicals antibodies are covered by our 100% guarantee.
<b>Host</b>	Goat
<b>Gene ID</b>	1399
<b>Gene Symbol</b>	CRKL
<b>Species</b>	Human, Mouse
<b>Immunogen</b>	Peptide with sequence C-KIFDPQNPENE corresponding to C-Terminus according to NP_005198.1.

Product Application Details	
<b>Applications</b>	Western Blot, Immunohistochemistry-Paraffin, Flow Cytometry, Immunocytochemistry/ Immunofluorescence, Immunohistochemistry, Peptide ELISA
<b>Recommended Dilutions</b>	Western Blot 0.1-1 ug/mL, Flow Cytometry 10 ug/ml, Immunohistochemistry, Immunocytochemistry/ Immunofluorescence 10 ug/ml, Immunohistochemistry-Paraffin 2.5 - 3.8 ug/mL, Peptide ELISA Detection limit 1:16000
<b>Application Notes</b>	WB: Approx 37kDa band observed in lysates of cell lines K562, Daudi and NIH3T3 (calculated MW of 33.8kDa according to Human NP_005198.1 and Mouse NP_031790.2 ). Primary incubation 1 hour at room temperature.

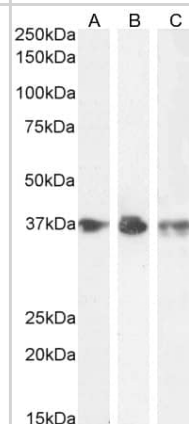


## Images

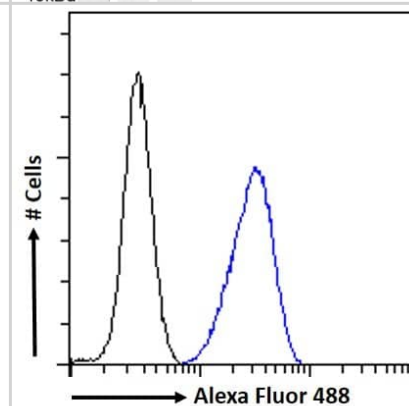
Immunohistochemistry-Paraffin: CrkL Antibody [NB300-884] - Paraffin embedded human thymus. Antibody at 3.8 ug/mL. Steamed antigen retrieval with citrate buffer pH 6, AP-staining.



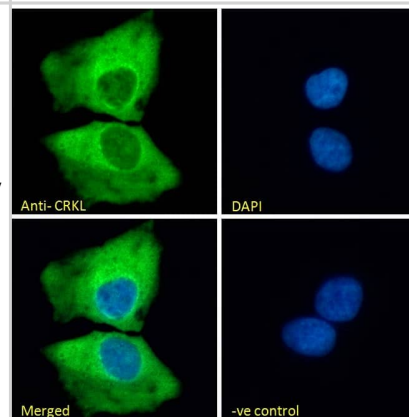
Western Blot: CrkL Antibody [NB300-884] - (0.1 ug/ml) staining of K562 (A) and (1ug/ml) Daudi (B) and NIH3T3 (C) cell lysate (35ug protein in RIPA buffer). Detected by chemiluminescence.



Flow Cytometry: CrkL Antibody [NB300-884] - Flow cytometric analysis of paraformaldehyde fixed U2OS cells (blue line), permeabilized with 0.5% Triton. Primary incubation 1hr (10ug/ml) followed by Alexa Fluor 488 secondary antibody (1ug/ml). IgG control: Unimmunized goat IgG (black line) followed by Alexa Fluor 488 secondary antibody.



Immunocytochemistry/Immunofluorescence: CrkL Antibody [NB300-884] - Immunofluorescence analysis of paraformaldehyde fixed U2OS cells, permeabilized with 0.15% Triton. Primary incubation 1hr (10ug/ml) followed by Alexa Fluor 488 secondary antibody (2ug/ml), showing cytoplasmic staining. The nuclear stain is DAPI (blue). Negative control: Unimmunized goat IgG (10ug/ml) followed by Alexa Fluor 488 secondary antibody (2ug/ml).



## Publications

Singer CF, Hudelist G, Lamm W et al. Active (p)CrkL is overexpressed in human malignancies: potential role as a surrogate parameter for therapeutic tyrosine kinase inhibition. *Oncol Rep* 2006-02-01 [PMID: 16391854]



### **Novus Biologicals USA**

10730 E. Briarwood Avenue  
Centennial, CO 80112  
USA  
Phone: 303.730.1950  
Toll Free: 1.888.506.6887  
Fax: 303.730.1966  
nb-customerservice@bio-techne.com

### **Bio-Techne Canada**

21 Canmotor Ave  
Toronto, ON M8Z 4E6  
Canada  
Phone: 905.827.6400  
Toll Free: 855.668.8722  
Fax: 905.827.6402  
canada.inquires@bio-techne.com

### **Bio-Techne Ltd**

19 Barton Lane  
Abingdon Science Park  
Abingdon, OX14 3NB, United Kingdom  
Phone: (44) (0) 1235 529449  
Free Phone: 0800 37 34 15  
Fax: (44) (0) 1235 533420  
info.EMEA@bio-techne.com

### **General Contact Information**

www.novusbio.com  
Technical Support: nb-technical@bio-techne.com  
Orders: nb-customerservice@bio-techne.com  
General: novus@novusbio.com

### **Products Related to NB300-884-100ug**

---

NB300-884PEP	CrkL Peptide
NBP2-33376H	Blue Marker Antibody (6F4-F6) [HRP]
HAF017	Rabbit anti-Goat IgG Secondary Antibody [HRP (Horseradish Peroxidase)]
HAF109	Donkey anti-Goat IgG Secondary Antibody [HRP (Horseradish Peroxidase)]
NB410-28088-1mg	Goat IgG Isotype Control

---

### **Limitations**

This product is for research use only and is not approved for use in humans or in clinical diagnosis. Primary Antibodies are guaranteed for 1 year from date of receipt.

For more information on our 100% guarantee, please visit [www.novusbio.com/guarantee](http://www.novusbio.com/guarantee)

Earn gift cards/discounts by submitting a review: [www.novusbio.com/reviews/submit/NB300-884](http://www.novusbio.com/reviews/submit/NB300-884)

Earn gift cards/discounts by submitting a publication using this product:  
[www.novusbio.com/publications](http://www.novusbio.com/publications)



